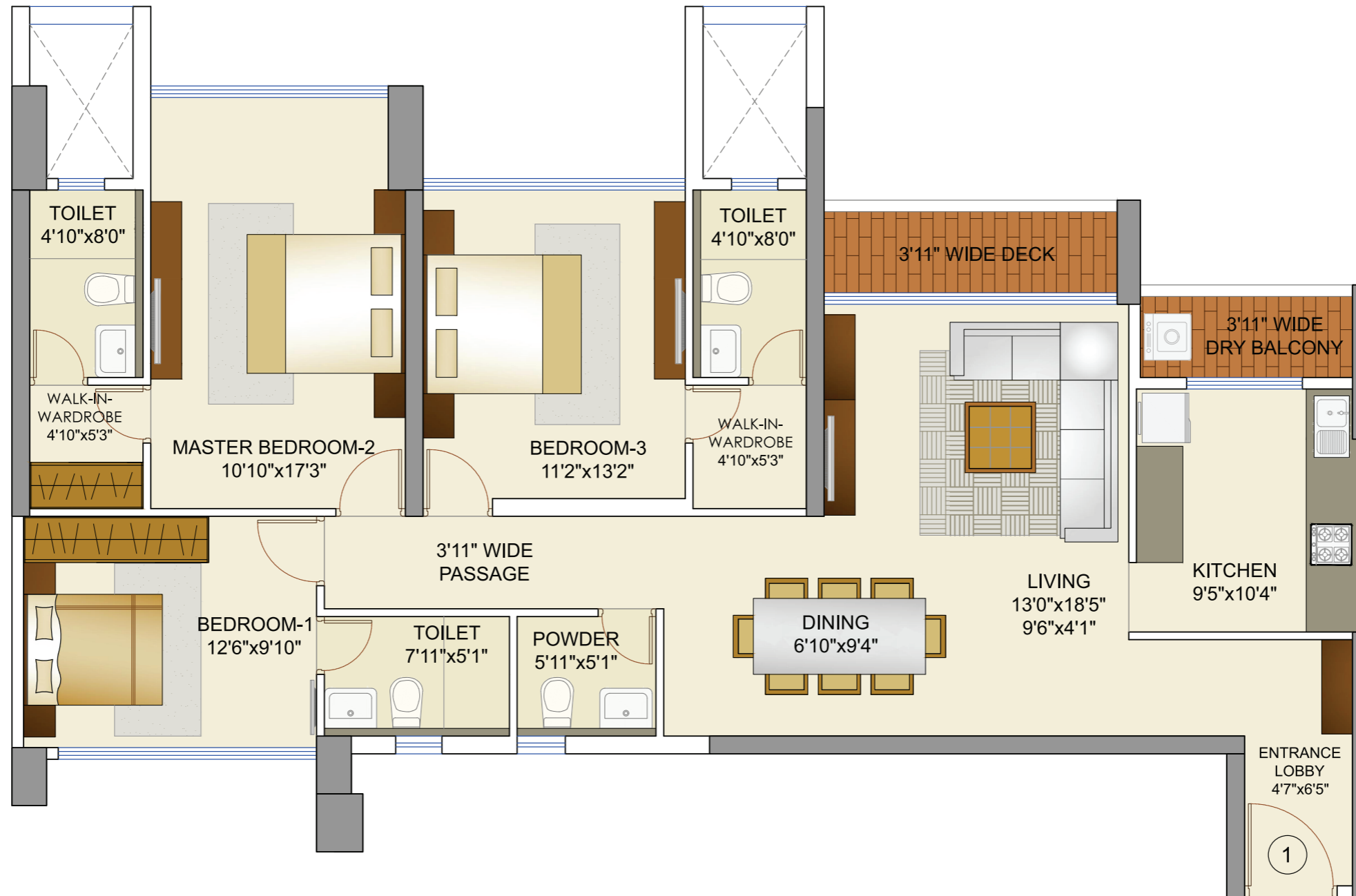
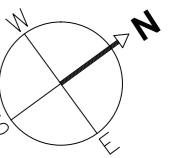


# Runwal Elegante Tower Elan (A)



## TYPICAL FLOOR PLAN OF 3 BHK

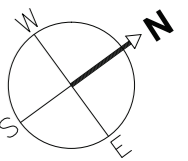


The plans, specifications, images and other details herein are only indicative and subject to approval of the concerned authorities. The Developer / Owner reserves the right to change any or all of these in the interest of the development, without prior notice or obligation. Artist's impressions are used to illustrate amenities, specifications, images and other details and these may be applicable to select apartments only. Tolerance of +/- 3% is possible in the unit areas on account of design and construction variances. All brands stated are subject to final decision of the project architect. This printed material does not constitute an offer and/or contract of any type between the Developer / Owner and the recipient. No booking or allotment shall be deemed to have been made on the basis of this printed material. Any Purchaser / Lessee of this development shall be governed by the terms and conditions of the agreement for sale / lease entered into between the parties, and no details mentioned in this printed material shall in any way govern such transactions unless as may be otherwise expressly provided in the agreement for sale/lease by the Developer / Owner. The Developer / Owner does not warrant or assume any liability or responsibility for the accuracy or completeness of any information contained herein. Project financed by Standard Chartered Bank and NOC / permission of Standard Chartered Bank will be obtained for sale of property, if required.

# Runwal Elegante Tower Elan (A)

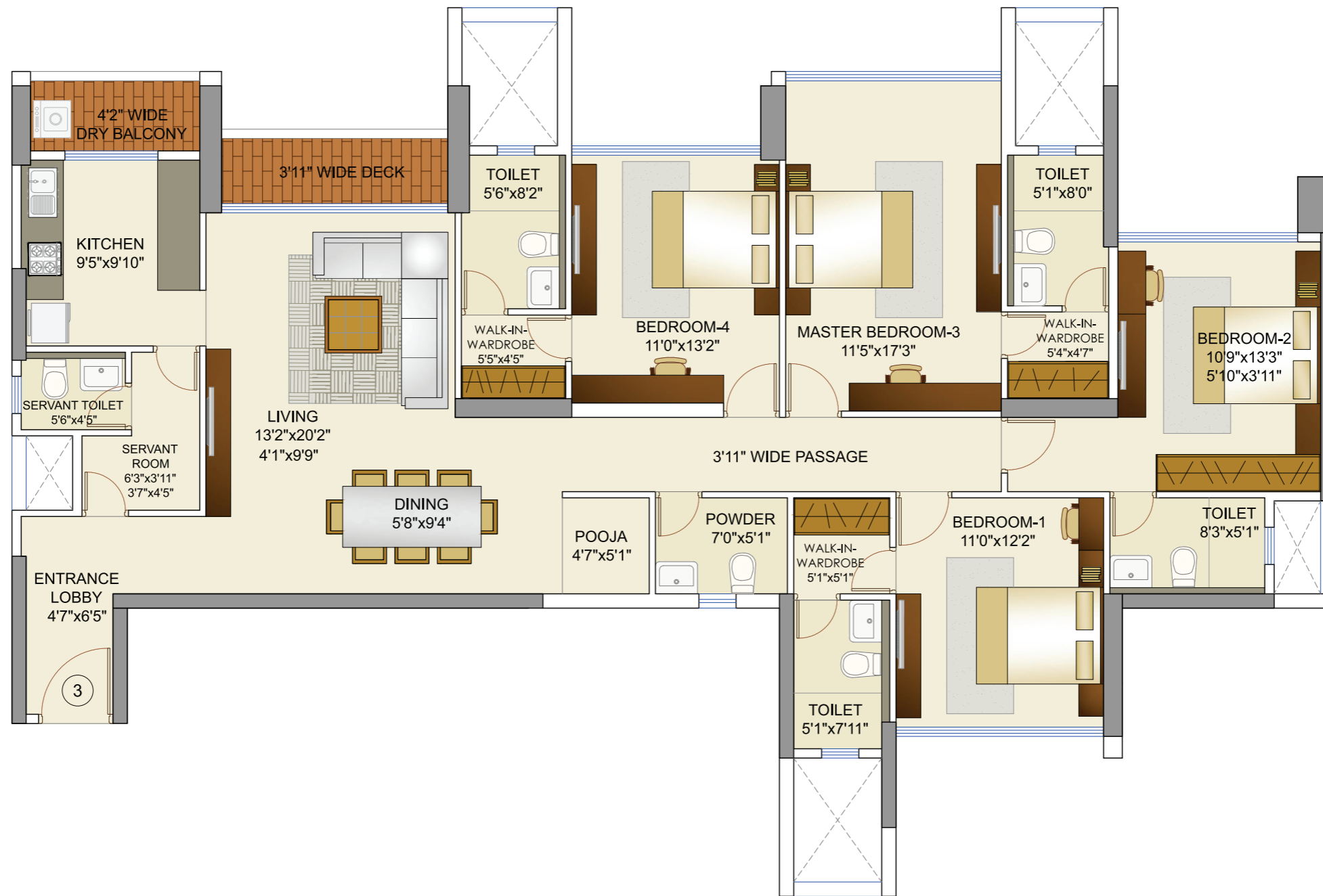


TYPICAL FLOOR PLAN OF 3-1/2 BHK

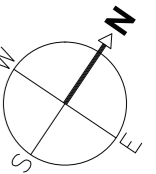


The plans, specifications, images and other details herein are only indicative and subject to approval of the concerned authorities. The Developer / Owner reserves the right to change any or all of these in the interest of the development, without prior notice or obligation. Artist's impressions are used to illustrate amenities, specifications, images and other details and these may be applicable to select apartments only. Tolerance of +/- 3% is possible in the unit areas on account of design and construction variances. All brands stated are subject to final decision of the project architect. This printed material does not constitute an offer and/or contract of any type between the Developer / Owner and the recipient. No booking or allotment shall be deemed to have been made on the basis of this printed material. Any Purchaser / Lessee of this development shall be governed by the terms and conditions of the agreement for sale / lease entered into between the parties, and no details mentioned in this printed material shall in any way govern such transactions unless as may be otherwise expressly provided in the agreement for sale/lease by the Developer / Owner. The Developer / Owner does not warrant or assume any liability or responsibility for the accuracy or completeness of any information contained herein. Project financed by Standard Chartered Bank and NOC / permission of Standard Chartered Bank will be obtained for sale of property, if required.

# Runwal Elegante Tower Elan (A)

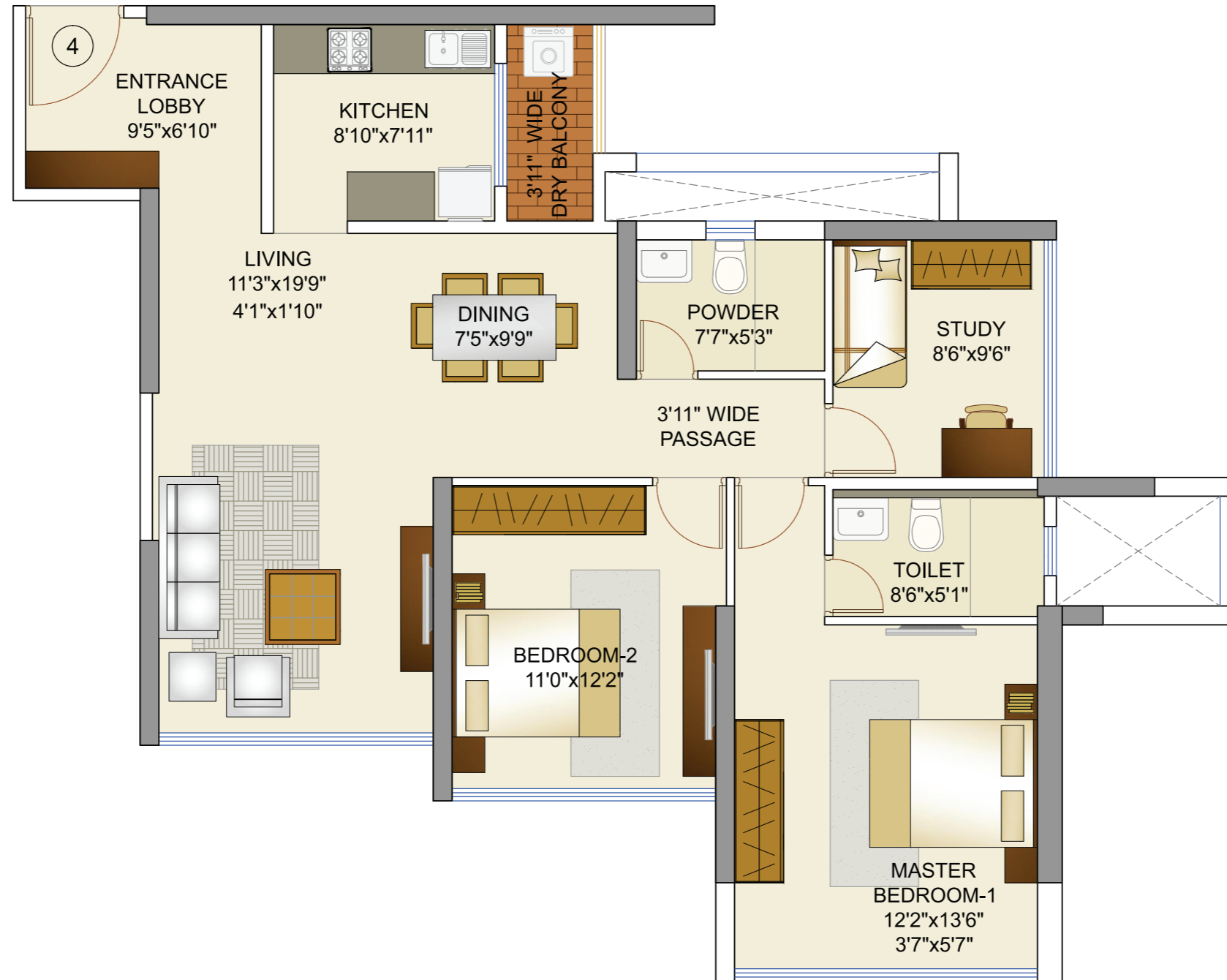


## TYPICAL FLOOR PLAN OF 4 BHK

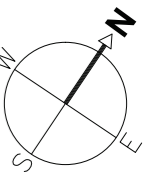


The plans, specifications, images and other details herein are only indicative and subject to approval of the concerned authorities. The Developer / Owner reserves the right to change any or all of these in the interest of the development, without prior notice or obligation. Artist's impressions are used to illustrate amenities, specifications, images and other details and these may be applicable to select apartments only. Tolerance of +/- 3% is possible in the unit areas on account of design and construction variances. All brands stated are subject to final decision of the project architect. This printed material does not constitute an offer and/or contract of any type between the Developer / Owner and the recipient. No booking or allotment shall be deemed to have been made on the basis of this printed material. Any Purchaser / Lessee of this development shall be governed by the terms and conditions of the agreement for sale / lease entered into between the parties, and no details mentioned in this printed material shall in any way govern such transactions unless as may be otherwise expressly provided in the agreement for sale/lease by the Developer / Owner. The Developer / Owner does not warrant or assume any liability or responsibility for the accuracy or completeness of any information contained herein. Project financed by Standard Chartered Bank and NOC / permission of Standard Chartered Bank will be obtained for sale of property, if required.

# Runwal Elegante Tower Elan (A)



## TYPICAL FLOOR PLAN OF 2-1/2 BHK

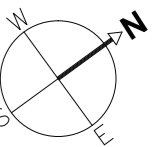


The plans, specifications, images and other details herein are only indicative and subject to approval of the concerned authorities. The Developer / Owner reserves the right to change any or all of these in the interest of the development, without prior notice or obligation. Artist's impressions are used to illustrate amenities, specifications, images and other details and these may be applicable to select apartments only. Tolerance of +/- 3% is possible in the unit areas on account of design and construction variances. All brands stated are subject to final decision of the project architect. This printed material does not constitute an offer and/or contract of any type between the Developer / Owner and the recipient. No booking or allotment shall be deemed to have been made on the basis of this printed material. Any Purchaser / Lessee of this development shall be governed by the terms and conditions of the agreement for sale / lease entered into between the parties, and no details mentioned in this printed material shall in any way govern such transactions unless as may be otherwise expressly provided in the agreement for sale/lease by the Developer / Owner. The Developer / Owner does not warrant or assume any liability or responsibility for the accuracy or completeness of any information contained herein. Project financed by Standard Chartered Bank and NOC / permission of Standard Chartered Bank will be obtained for sale of property, if required.

# Runwal Elegante Tower Elan (A)

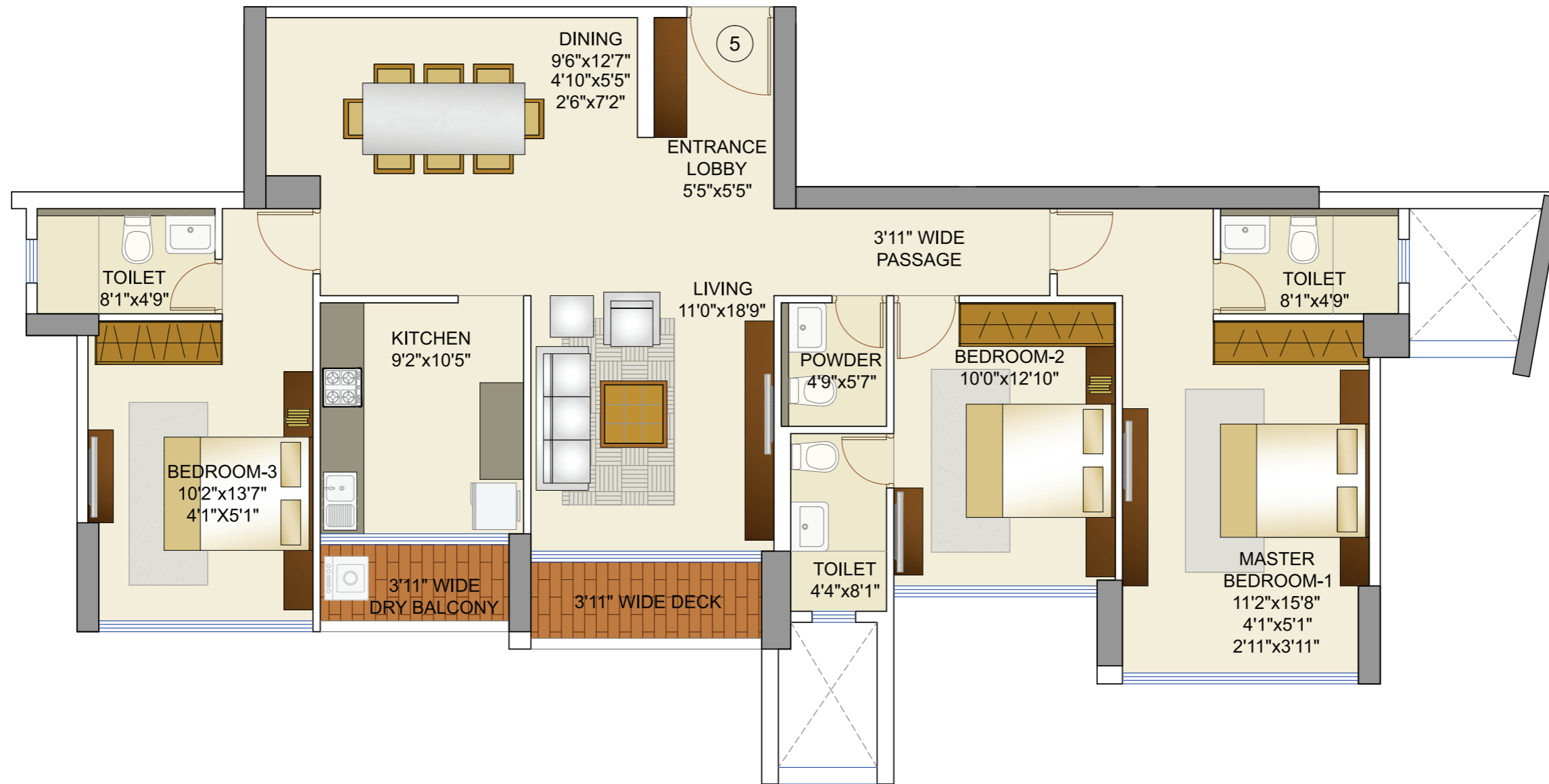


TYPICAL FLOOR PLAN OF 3 BHK

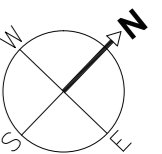


The plans, specifications, images and other details herein are only indicative and subject to approval of the concerned authorities. The Developer / Owner reserves the right to change any or all of these in the interest of the development, without prior notice or obligation. Artist's impressions are used to illustrate amenities, specifications, images and other details and these may be applicable to select apartments only. Tolerance of +/- 3% is possible in the unit areas on account of design and construction variances. All brands stated are subject to final decision of the project architect. This printed material does not constitute an offer and/or contract of any type between the Developer / Owner and the recipient. No booking or allotment shall be deemed to have been made on the basis of this printed material. Any Purchaser / Lessee of this development shall be governed by the terms and conditions of the agreement for sale / lease entered into between the parties, and no details mentioned in this printed material shall in any way govern such transactions unless as may be otherwise expressly provided in the agreement for sale/lease by the Developer / Owner. The Developer / Owner does not warrant or assume any liability or responsibility for the accuracy or completeness of any information contained herein. Project financed by Standard Chartered Bank and NOC / permission of Standard Chartered Bank will be obtained for sale of property, if required.

# Runwal Elegante Tower Elan (A)



## TYPICAL FLOOR PLAN OF 3 BHK

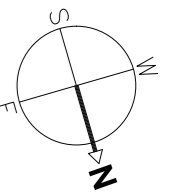


The plans, specifications, images and other details herein are only indicative and subject to approval of the concerned authorities. The Developer / Owner reserves the right to change any or all of these in the interest of the development, without prior notice or obligation. Artist's impressions are used to illustrate amenities, specifications, images and other details and these may be applicable to select apartments only. Tolerance of +/- 3% is possible in the unit areas on account of design and construction variances. All brands stated are subject to final decision of the project architect. This printed material does not constitute an offer and/or contract of any type between the Developer / Owner and the recipient. No booking or allotment shall be deemed to have been made on the basis of this printed material. Any Purchaser / Lessee of this development shall be governed by the terms and conditions of the agreement for sale / lease entered into between the parties, and no details mentioned in this printed material shall in any way govern such transactions unless as may be otherwise expressly provided in the agreement for sale/lease by the Developer / Owner. The Developer / Owner does not warrant or assume any liability or responsibility for the accuracy or completeness of any information contained herein. Project financed by Standard Chartered Bank and NOC / permission of Standard Chartered Bank will be obtained for sale of property, if required.

# Runwal Elegante Tower Evoke (B)

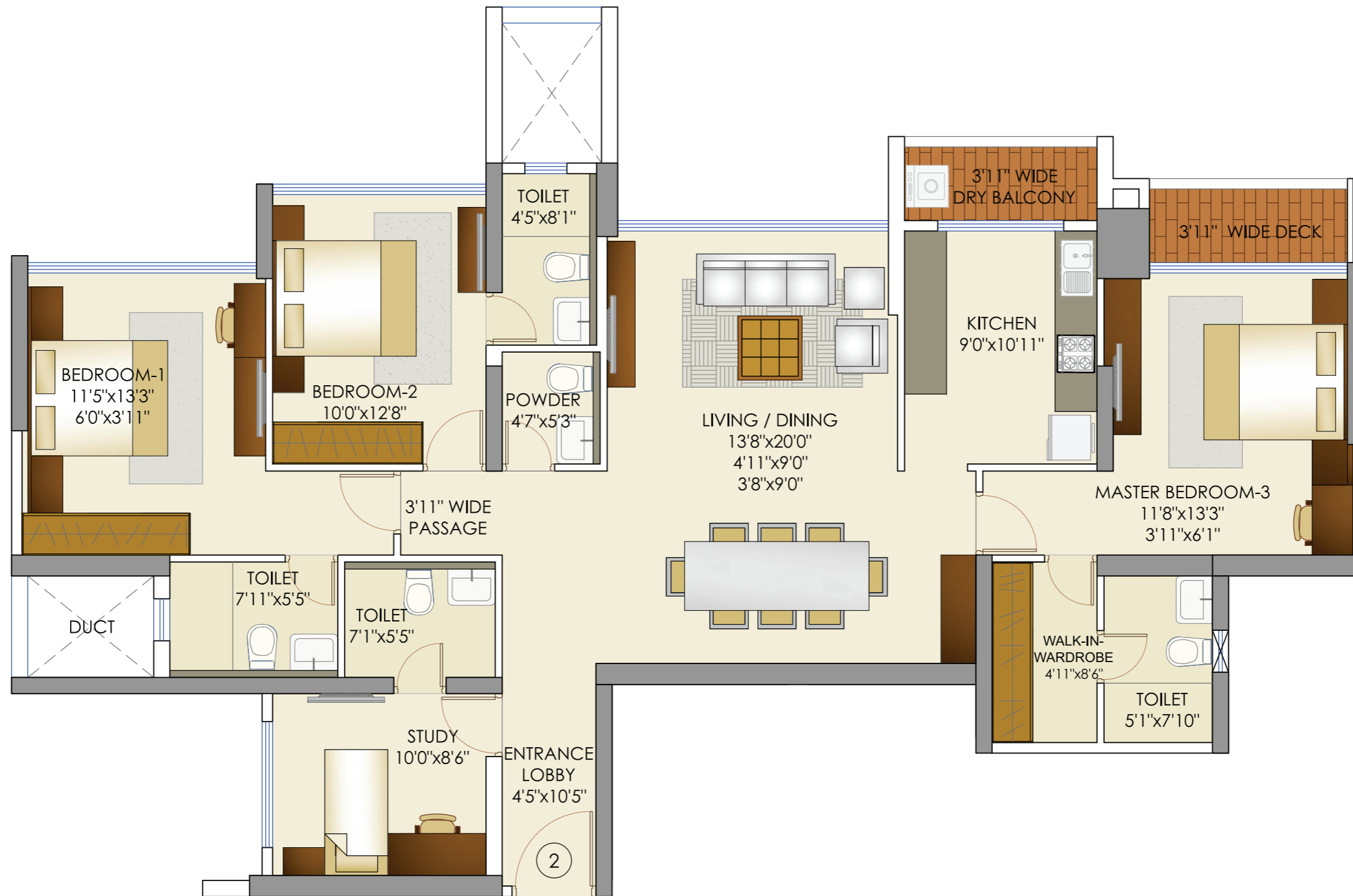


TYPICAL FLOOR PLAN OF 4 BHK

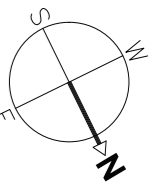


The plans, specifications, images and other details herein are only indicative and subject to approval of the concerned authorities. The Developer / Owner reserves the right to change any or all of these in the interest of the development, without prior notice or obligation. Artist's impressions are used to illustrate amenities, specifications, images and other details and these may be applicable to select apartments only. Tolerance of +/- 3% is possible in the unit areas on account of design and construction variances. All brands stated are subject to final decision of the project architect. This printed material does not constitute an offer and/or contract of any type between the Developer / Owner and the recipient. No booking or allotment shall be deemed to have been made on the basis of this printed material. Any Purchaser / Lessee of this development shall be governed by the terms and conditions of the agreement for sale / lease entered into between the parties, and no details mentioned in this printed material shall in any way govern such transactions unless as may be otherwise expressly provided in the agreement for sale/lease by the Developer / Owner. The Developer / Owner does not warrant or assume any liability or responsibility for the accuracy or completeness of any information contained herein. Project financed by Standard Chartered Bank and NOC / permission of Standard Chartered Bank will be obtained for sale of property, if required.

# Runwal Elegante Tower Evoke (B)



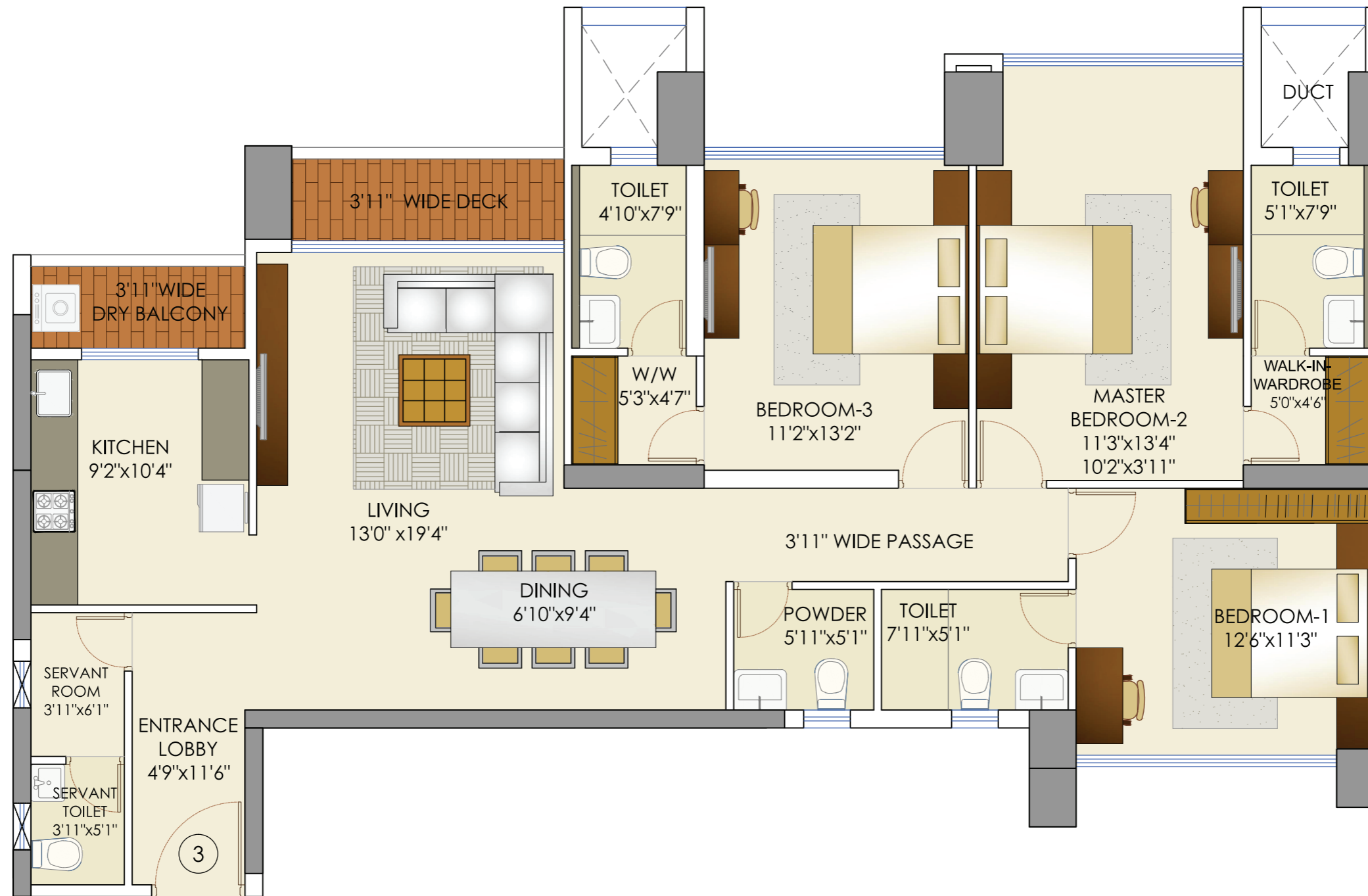
TYPICAL FLOOR PLAN OF 3-1/2 BHK



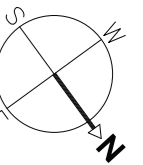
The plans, specifications, images and other details herein are only indicative and subject to approval of the concerned authorities. The Developer / Owner reserves the right to change any or all of these in the interest of the development, without prior notice or obligation. Artist's impressions are used to illustrate amenities, specifications, images and other details and these may be applicable to select apartments only. Tolerance of +/- 3% is possible in the unit areas on account of design and construction variances. All brands stated are subject to final decision of the project architect. This printed material does not constitute an offer and/or contract of any type between the Developer / Owner and the recipient. No booking or allotment shall be deemed to have been made on the basis of this printed material. Any Purchaser / Lessee of this development shall be governed by the terms and conditions of the agreement for sale / lease entered into between the parties, and no details mentioned in this printed material shall in any way govern such transactions unless as may be otherwise expressly provided in the agreement for sale/lease by the Developer / Owner. The Developer / Owner does not warrant or assume any liability or responsibility for the accuracy or completeness of any information contained herein. Project financed by Standard Chartered Bank and NOC / permission of Standard Chartered Bank will be obtained for sale of property, if required.



# Runwal Elegante Tower Evoke (B)



## TYPICAL FLOOR PLAN OF 3 BHK



The plans, specifications, images and other details herein are only indicative and subject to approval of the concerned authorities. The Developer / Owner reserves the right to change any or all of these in the interest of the development, without prior notice or obligation. Artist's impressions are used to illustrate amenities, specifications, images and other details and these may be applicable to select apartments only. Tolerance of +/- 3% is possible in the unit areas on account of design and construction variances. All brands stated are subject to final decision of the project architect. This printed material does not constitute an offer and/or contract of any type between the Developer / Owner and the recipient. No booking or allotment shall be deemed to have been made on the basis of this printed material. Any Purchaser / Lessee of this development shall be governed by the terms and conditions of the agreement for sale / lease entered into between the parties, and no details mentioned in this printed material shall in any way govern such transactions unless as may be otherwise expressly provided in the agreement for sale/lease by the Developer / Owner. The Developer / Owner does not warrant or assume any liability or responsibility for the accuracy or completeness of any information contained herein. Project financed by Standard Chartered Bank and NOC / permission of Standard Chartered Bank will be obtained for sale of property, if required.

# Runwal Elegante Tower Evoke (B)

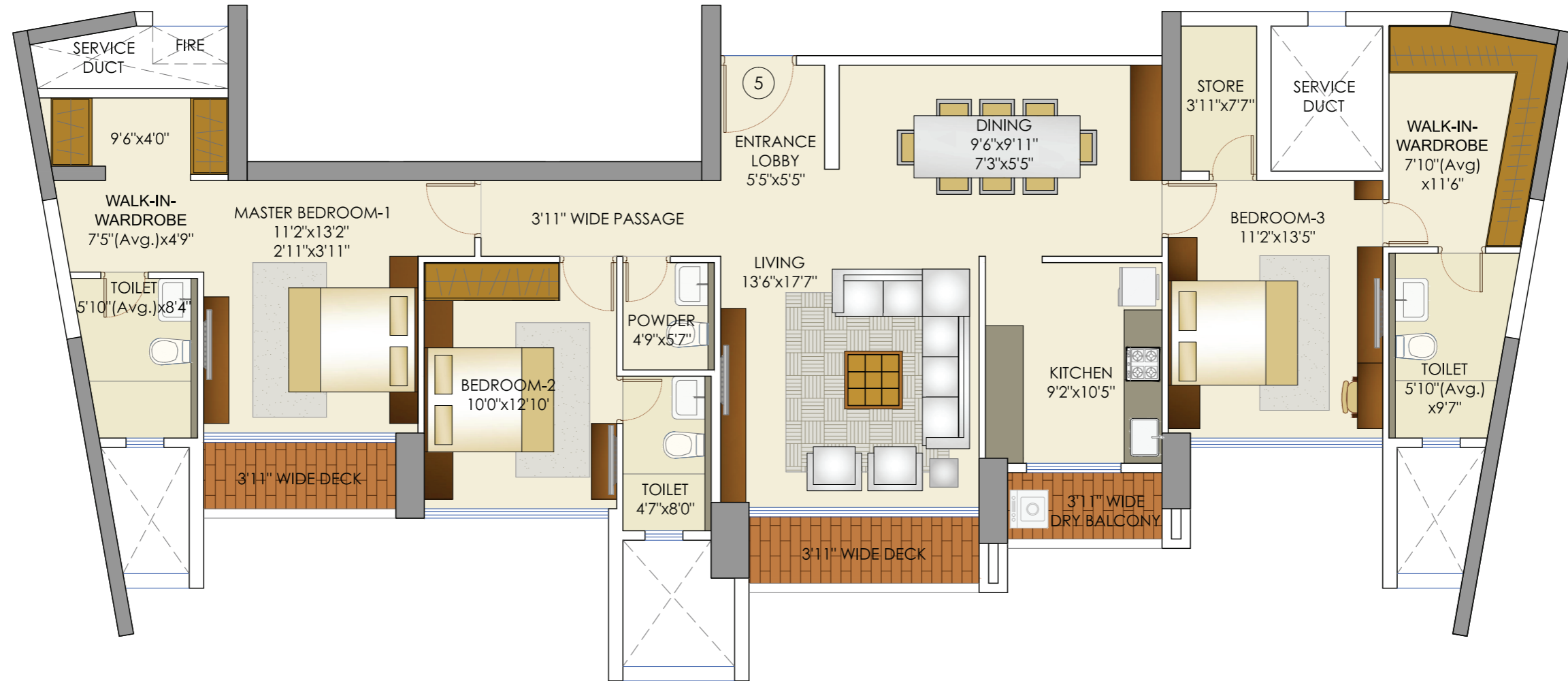


## TYPICAL FLOOR PLAN OF 3 BHK

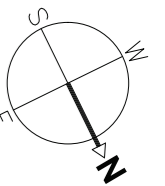


The plans, specifications, images and other details herein are only indicative and subject to approval of the concerned authorities. The Developer / Owner reserves the right to change any or all of these in the interest of the development, without prior notice or obligation. Artist's impressions are used to illustrate amenities, specifications, images and other details and these may be applicable to select apartments only. Tolerance of +/- 3% is possible in the unit areas on account of design and construction variances. All brands stated are subject to final decision of the project architect. This printed material does not constitute an offer and/or contract of any type between the Developer / Owner and the recipient. No booking or allotment shall be deemed to have been made on the basis of this printed material. Any Purchaser / Lessee of this development shall be governed by the terms and conditions of the agreement for sale / lease entered into between the parties, and no details mentioned in this printed material shall in any way govern such transactions unless as may be otherwise expressly provided in the agreement for sale/lease by the Developer / Owner. The Developer / Owner does not warrant or assume any liability or responsibility for the accuracy or completeness of any information contained herein. Project financed by Standard Chartered Bank and NOC / permission of Standard Chartered Bank will be obtained for sale of property, if required.

# Runwal Elegante Tower Evoke (B)

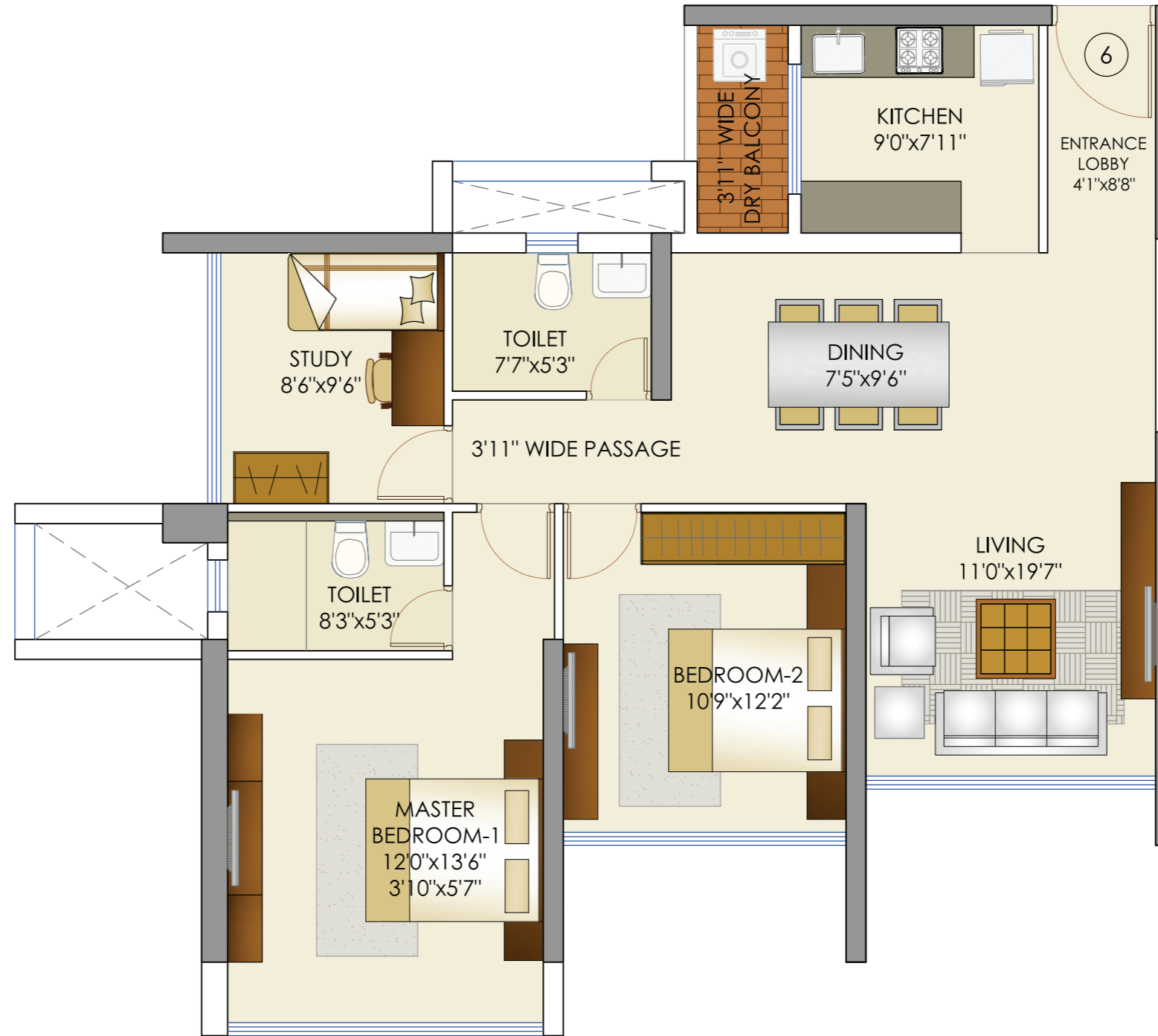


TYPICAL FLOOR PLAN OF 3 BHK

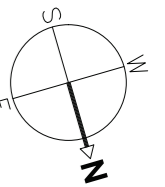


The plans, specifications, images and other details herein are only indicative and subject to approval of the concerned authorities. The Developer / Owner reserves the right to change any or all of these in the interest of the development, without prior notice or obligation. Artist's impressions are used to illustrate amenities, specifications, images and other details and these may be applicable to select apartments only. Tolerance of +/- 3% is possible in the unit areas on account of design and construction variances. All brands stated are subject to final decision of the project architect. This printed material does not constitute an offer and/or contract of any type between the Developer / Owner and the recipient. No booking or allotment shall be deemed to have been made on the basis of this printed material. Any Purchaser / Lessee of this development shall be governed by the terms and conditions of the agreement for sale / lease entered into between the parties, and no details mentioned in this printed material shall in any way govern such transactions unless as may be otherwise expressly provided in the agreement for sale/lease by the Developer / Owner. The Developer / Owner does not warrant or assume any liability or responsibility for the accuracy or completeness of any information contained herein. Project financed by Standard Chartered Bank and NOC / permission of Standard Chartered Bank will be obtained for sale of property, if required.

# Runwal Elegante Tower Evoke (B)



## TYPICAL FLOOR PLAN OF 2-1/2 BHK

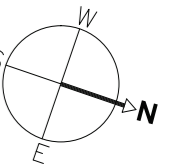


The plans, specifications, images and other details herein are only indicative and subject to approval of the concerned authorities. The Developer / Owner reserves the right to change any or all of these in the interest of the development, without prior notice or obligation. Artist's impressions are used to illustrate amenities, specifications, images and other details and these may be applicable to select apartments only. Tolerance of +/- 3% is possible in the unit areas on account of design and construction variances. All brands stated are subject to final decision of the project architect. This printed material does not constitute an offer and/or contract of any type between the Developer / Owner and the recipient. No booking or allotment shall be deemed to have been made on the basis of this printed material. Any Purchaser / Lessee of this development shall be governed by the terms and conditions of the agreement for sale / lease entered into between the parties, and no details mentioned in this printed material shall in any way govern such transactions unless as may be otherwise expressly provided in the agreement for sale/lease by the Developer / Owner. The Developer / Owner does not warrant or assume any liability or responsibility for the accuracy or completeness of any information contained herein. Project financed by Standard Chartered Bank and NOC / permission of Standard Chartered Bank will be obtained for sale of property, if required.

# Runwal Elegante Tower Elite (C)



TYPICAL FLOOR PLAN OF 4-1/2 BHK

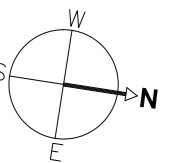


The plans, specifications, images and other details herein are only indicative and subject to approval of the concerned authorities. The Developer / Owner reserves the right to change any or all of these in the interest of the development, without prior notice or obligation. Artist's impressions are used to illustrate amenities, specifications, images and other details and these may be applicable to select apartments only. Tolerance of +/- 3% is possible in the unit areas on account of design and construction variances. All brands stated are subject to final decision of the project architect. This printed material does not constitute an offer and/or contract of any type between the Developer / Owner and the recipient. No booking or allotment shall be deemed to have been made on the basis of this printed material. Any Purchaser / Lessee of this development shall be governed by the terms and conditions of the agreement for sale / lease entered into between the parties, and no details mentioned in this printed material shall in any way govern such transactions unless as may be otherwise expressly provided in the agreement for sale/lease by the Developer / Owner. The Developer / Owner does not warrant or assume any liability or responsibility for the accuracy or completeness of any information contained herein. Project financed by Standard Chartered Bank and NOC / permission of Standard Chartered Bank will be obtained for sale of property, if required.

# Runwal Elegante Tower Elite (C)



TYPICAL FLOOR PLAN OF 3 BHK

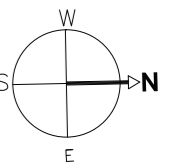


The plans, specifications, images and other details herein are only indicative and subject to approval of the concerned authorities. The Developer / Owner reserves the right to change any or all of these in the interest of the development, without prior notice or obligation. Artist's impressions are used to illustrate amenities, specifications, images and other details and these may be applicable to select apartments only. Tolerance of +/- 3% is possible in the unit areas on account of design and construction variances. All brands stated are subject to final decision of the project architect. This printed material does not constitute an offer and/or contract of any type between the Developer / Owner and the recipient. No booking or allotment shall be deemed to have been made on the basis of this printed material. Any Purchaser / Lessee of this development shall be governed by the terms and conditions of the agreement for sale / lease entered into between the parties, and no details mentioned in this printed material shall in any way govern such transactions unless as may be otherwise expressly provided in the agreement for sale/lease by the Developer / Owner. The Developer / Owner does not warrant or assume any liability or responsibility for the accuracy or completeness of any information contained herein. Project financed by Standard Chartered Bank and NOC / permission of Standard Chartered Bank will be obtained for sale of property, if required.

# Runwal Elegante Tower Elite (C)



## TYPICAL FLOOR PLAN OF 4-1/2 BHK

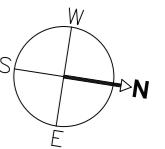


The plans, specifications, images and other details herein are only indicative and subject to approval of the concerned authorities. The Developer / Owner reserves the right to change any or all of these in the interest of the development, without prior notice or obligation. Artist's impressions are used to illustrate amenities, specifications, images and other details and these may be applicable to select apartments only. Tolerance of +/- 3% is possible in the unit areas on account of design and construction variances. All brands stated are subject to final decision of the project architect. This printed material does not constitute an offer and/or contract of any type between the Developer / Owner and the recipient. No booking or allotment shall be deemed to have been made on the basis of this printed material. Any Purchaser / Lessee of this development shall be governed by the terms and conditions of the agreement for sale / lease entered into between the parties, and no details mentioned in this printed material shall in any way govern such transactions unless as may be otherwise expressly provided in the agreement for sale/lease by the Developer / Owner. The Developer / Owner does not warrant or assume any liability or responsibility for the accuracy or completeness of any information contained herein. Project financed by Standard Chartered Bank and NOC / permission of Standard Chartered Bank will be obtained for sale of property, if required.

# Runwal Elegante Tower Elite (C)



TYPICAL FLOOR PLAN OF 5 BHK



The plans, specifications, images and other details herein are only indicative and subject to approval of the concerned authorities. The Developer / Owner reserves the right to change any or all of these in the interest of the development, without prior notice or obligation. Artist's impressions are used to illustrate amenities, specifications, images and other details and these may be applicable to select apartments only. Tolerance of +/- 3% is possible in the unit areas on account of design and construction variances. All brands stated are subject to final decision of the project architect. This printed material does not constitute an offer and/or contract of any type between the Developer / Owner and the recipient. No booking or allotment shall be deemed to have been made on the basis of this printed material. Any Purchaser / Lessee of this development shall be governed by the terms and conditions of the agreement for sale / lease entered into between the parties, and no details mentioned in this printed material shall in any way govern such transactions unless as may be otherwise expressly provided in the agreement for sale/lease by the Developer / Owner. The Developer / Owner does not warrant or assume any liability or responsibility for the accuracy or completeness of any information contained herein. Project financed by Standard Chartered Bank and NOC / permission of Standard Chartered Bank will be obtained for sale of property, if required.