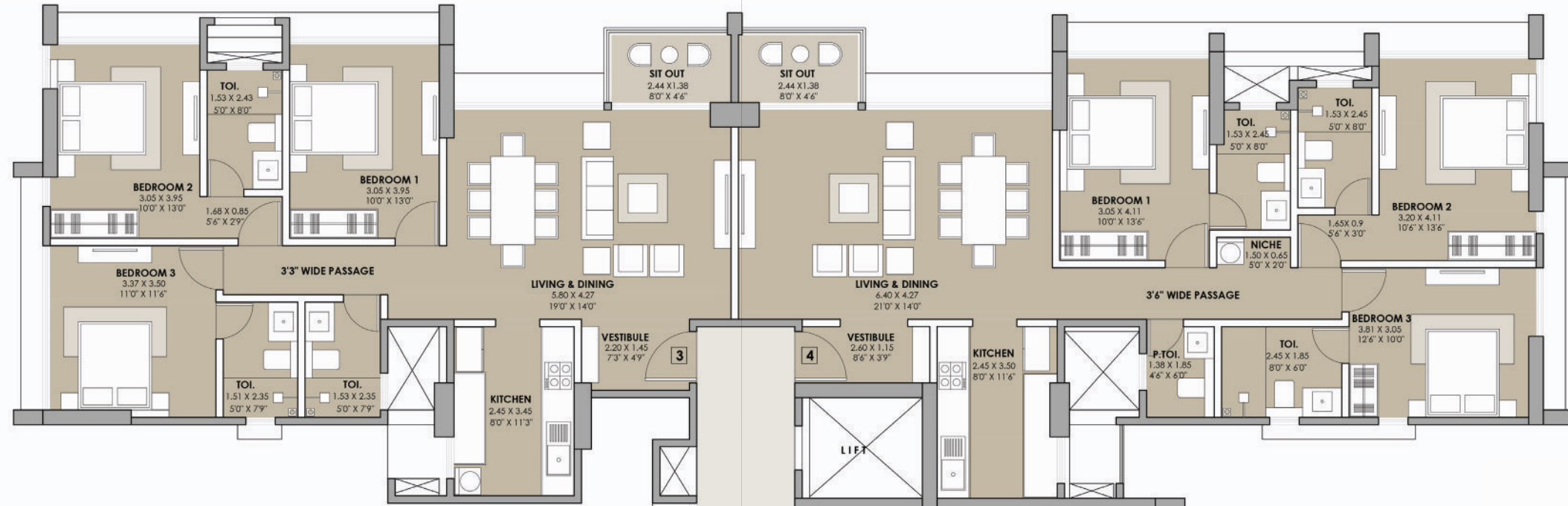
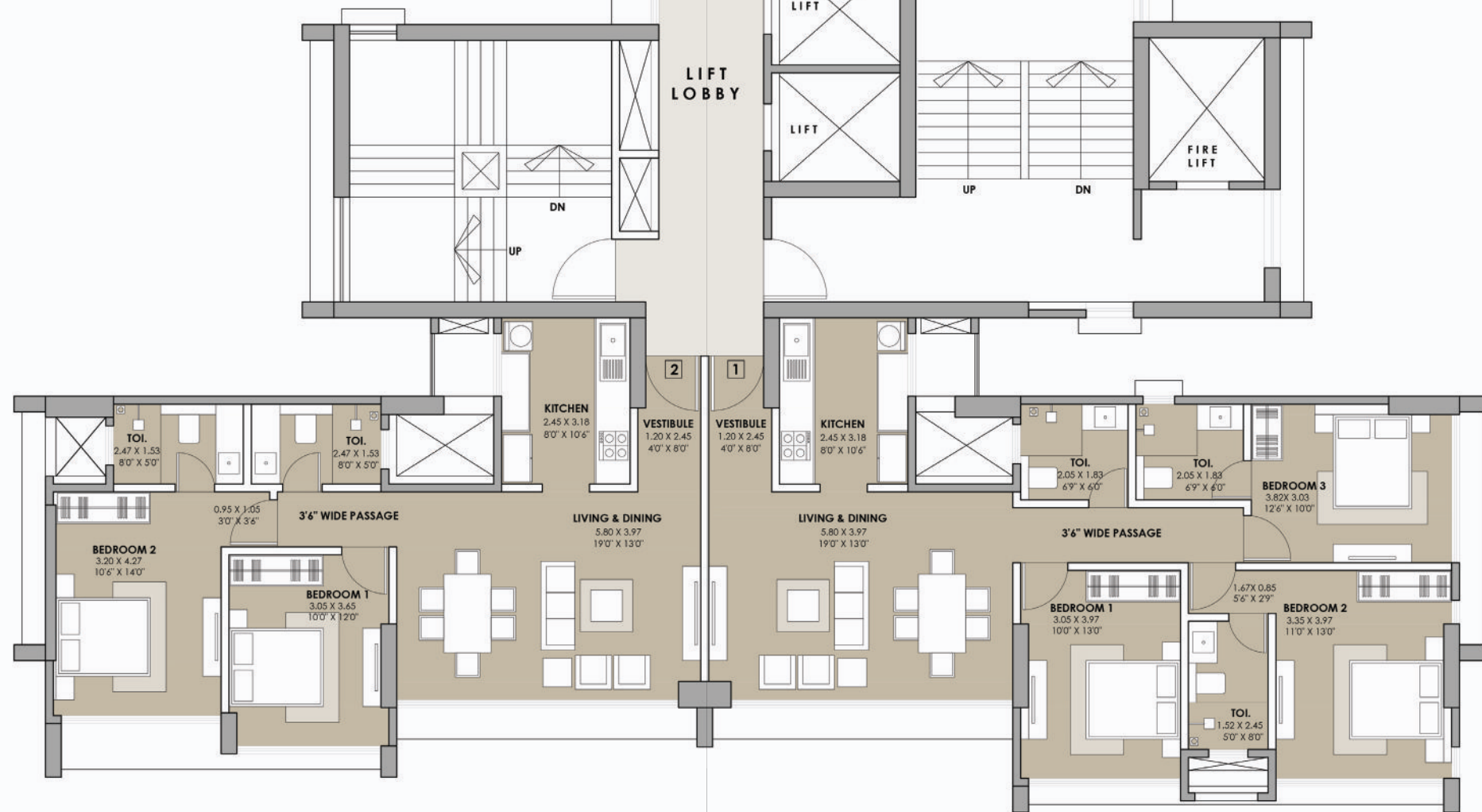


TOWER A TYPICAL FLOOR PLAN

3BHK PREMIUM 2
INCLUDING SIT OUT
98.44 SQ. MTS*
1060.00 SQ. FT.*

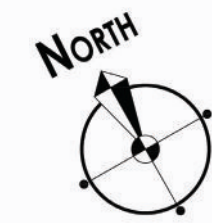


3BHK LUXURY
INCLUDING SIT OUT
108.97 SQ. MTS*
1173.00 SQ. FT.*



2BHK PREMIUM
72.90 SQ. MTS*
785.00 SQ. FT.*

3BHK PREMIUM 1
93.01 SQ. MTS*
1001.00 SQ. FT.*



Disclaimer - Not to scale. The furniture/ fixtures etc. shown in the image are only indicative and representational (not actual) in nature and are only for the purpose of illustrating/ reflecting a possible layout and do not form a part of the standard specifications, amenities, services, etc. to be provided in respect of the flat. All specifications of the flat shall be as per the agreement for sale (if any) between the parties. Minor variations (+/-3%) in actual carpet areas may occur as a result of finishing tolerance & column projection. The project is registered under MahaRera Regn. No. P51800023183 Savana Phase 2 and MahaRera Regn. No. P51800023183 Savana Phase 3, details available on MahaRera website: <https://maharera.mahaonline.gov.in/>
All figures are RERA Carpet Area. NOTE: 1 SQ. MTS. = 10.764 SQ.FT.

TOWER A REFUGE FLOOR PLAN

3BHK PREMIUM 2
INCLUDING SIT OUT
102.01 SQ. MTS*
1098.00 SQ. FT.*



2BHK PREMIUM
72.90 SQ. MTS*
785.00 SQ. FT.*

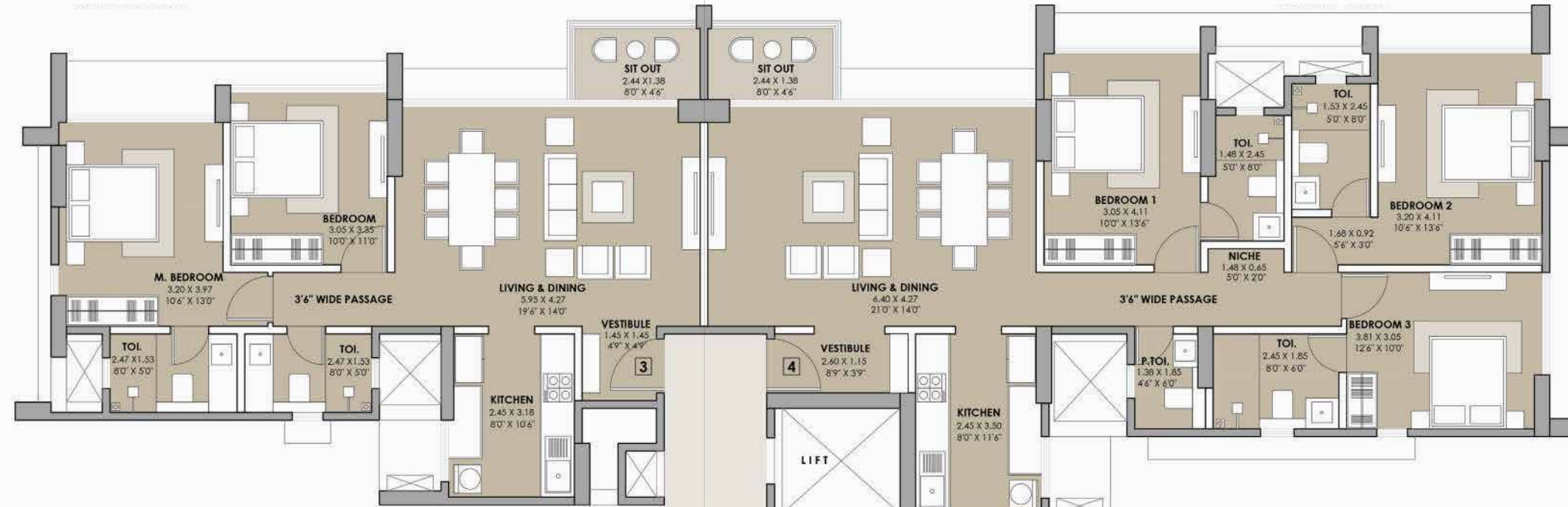
3BHK PREMIUM 1
93.01 SQ. MTS*
1001.00 SQ. FT.*



Disclaimer - Not to scale. The furniture/ fixtures etc. shown in the image are only indicative and representational (not actual) in nature and are only for the purpose of illustrating/ reflecting a possible layout and do not form a part of the standard specifications, amenities, services, etc. to be provided in respect of the flat. All specifications of the flat shall be as per the agreement for sale (if any) between the parties. Minor variations (+/-3%) in actual carpet areas may occur as a result of finishing tolerance & column projection. The project is registered under MahaRera Regn. No. P51800023159 Savana Phase 2 and MahaRera Regn. No. P51800023183 Savana Phase 3, details available on MahaRera website: <https://maharera.mahaonline.gov.in/>
All figures are RERA Carpet Area. NOTE: 1 SQ. MTS. = 10.764 SQ. FT.

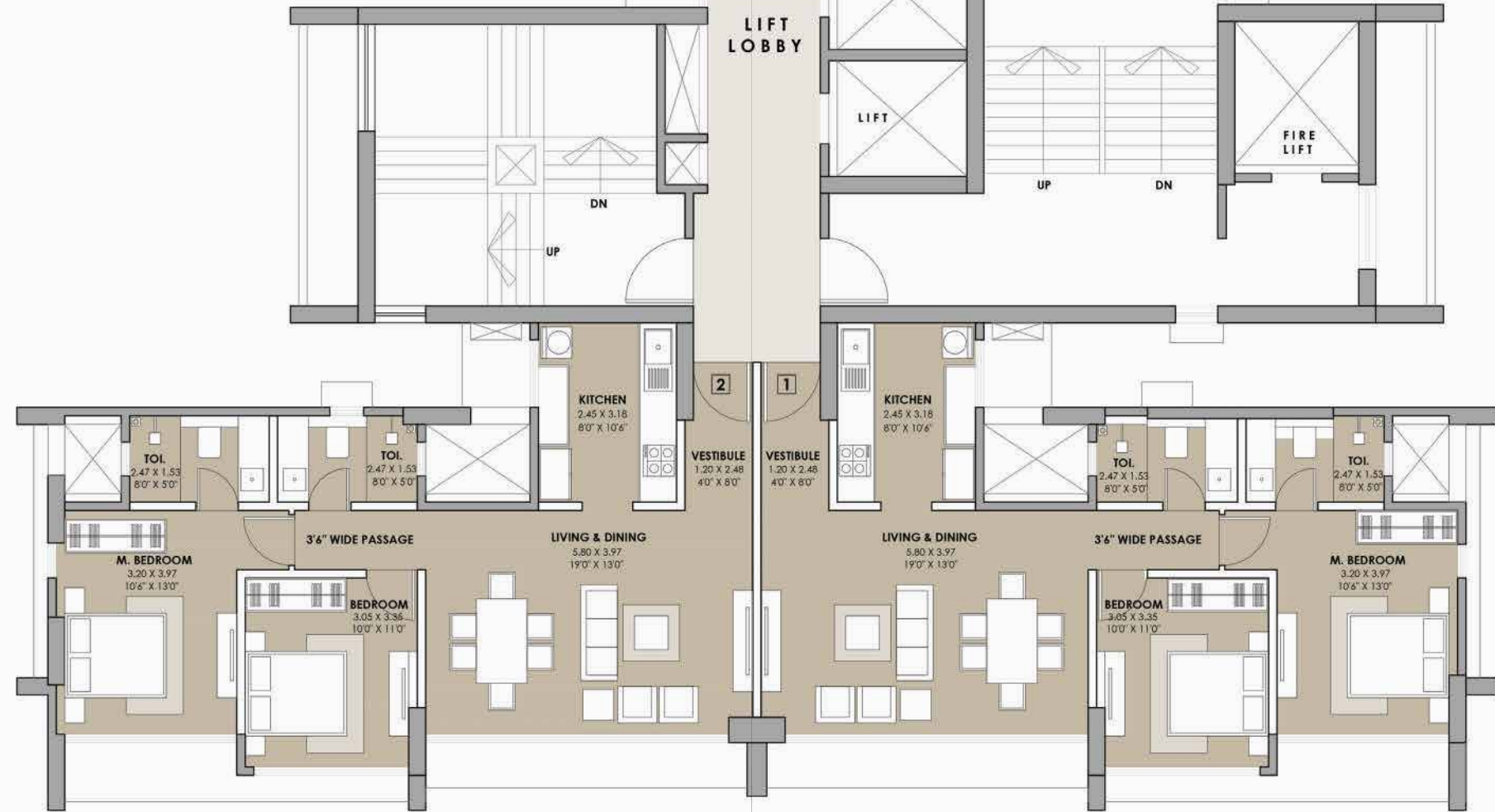
TOWER B TYPICAL FLOOR PLAN

2BHK LUXURY
INCLUDING SIT OUT
76.16 SQ. MTS*
820.00 SQ. FT.*

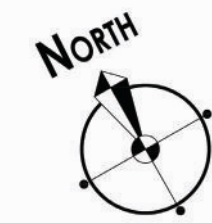


3BHK LUXURY
INCLUDING SIT OUT
108.92 SQ. MTS*
1172.00 SQ. FT.*

2BHK PREMIUM
70.98 SQ. MTS*
764.00 SQ. FT.*



2BHK PREMIUM
70.98 SQ. MTS*
764.00 SQ. FT.*



Disclaimer - Not to scale. The furniture/ fixtures etc. shown in the image are only indicative and representational (not actual) in nature and are only for the purpose of illustrating/ reflecting a possible layout and do not form a part of the standard specifications, amenities, services, etc. to be provided in respect of the flat. All specifications of the flat shall be as per the agreement for sale (if any) between the parties. Minor variations (+/-3%) in actual carpet areas may occur as a result of finishing tolerance & column projection. The project is registered under MahaRera Regn. No. P51800023159 Savana Phase 2 and MahaRera Regn. No. P51800023183 Savana Phase 3. details available on MahaRera website: <https://maharera.mahaonline.gov.in/>
All figures are RERA Carpet Area. NOTE: 1 SQ. MTS. = 10.764 SQ.FT.

TOWER B REFUGE FLOOR PLAN

3BHK PREMIUM
INCLUDING SIT OUT
94.22 SQ. MTS*
1014.00 SQ. FT.*



2BHK PREMIUM
70.98 SQ. MTS*
764.00 SQ. FT.*

2BHK PREMIUM
70.98 SQ. MTS*
764.00 SQ. FT.*

Disclaimer - Not to scale. The furniture/ fixtures etc. shown in the image are only indicative and representational (not actual) in nature and are only for the purpose of illustrating/ reflecting a possible layout and do not form a part of the standard specifications, amenities, services, etc. to be provided in respect of the flat. All specifications of the flat shall be as per the agreement for sale (if any) between the parties. Minor variations (+/-3%) in actual carpet areas may occur as a result of finishing tolerance & column projection. The project is registered under MahaRera Regn. No. P51800023159 Savana Phase 2 and MahaRera Regn. No. P51800023183 Savana Phase 3. details available on MahaRera website: <https://maharera.mahaonline.gov.in/>
All figures are RERA Carpet Area. NOTE: 1 SQ. MTS. = 10.764 SQ.FT.