





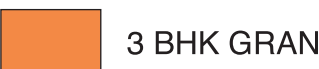




- |   |                |   |              |
|---|----------------|---|--------------|
|  | 1 BHK AURA     |  | 1 BHK OPTIMA |
|  | 2 BHK ELITA    |  | 2 BHK PRIMA  |
|  | 2 BHK MAGNA    |  | 2 BHK MAXIMA |
|  | 3 BHK GRANDEUR |   |              |



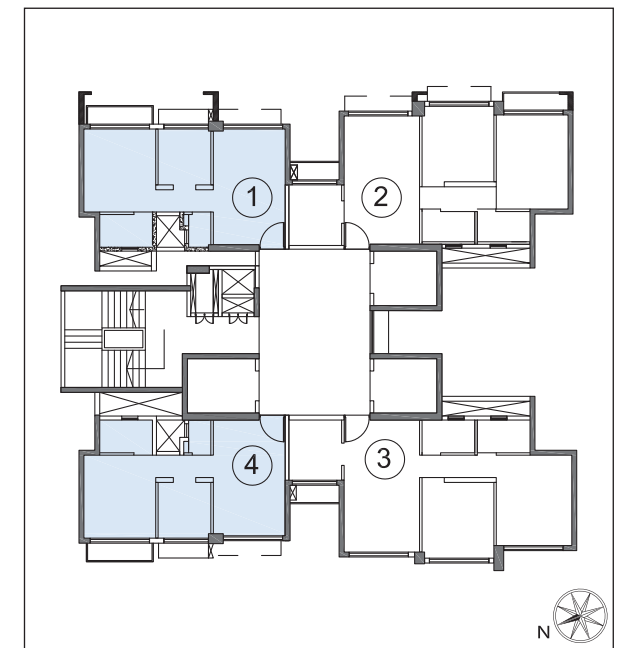
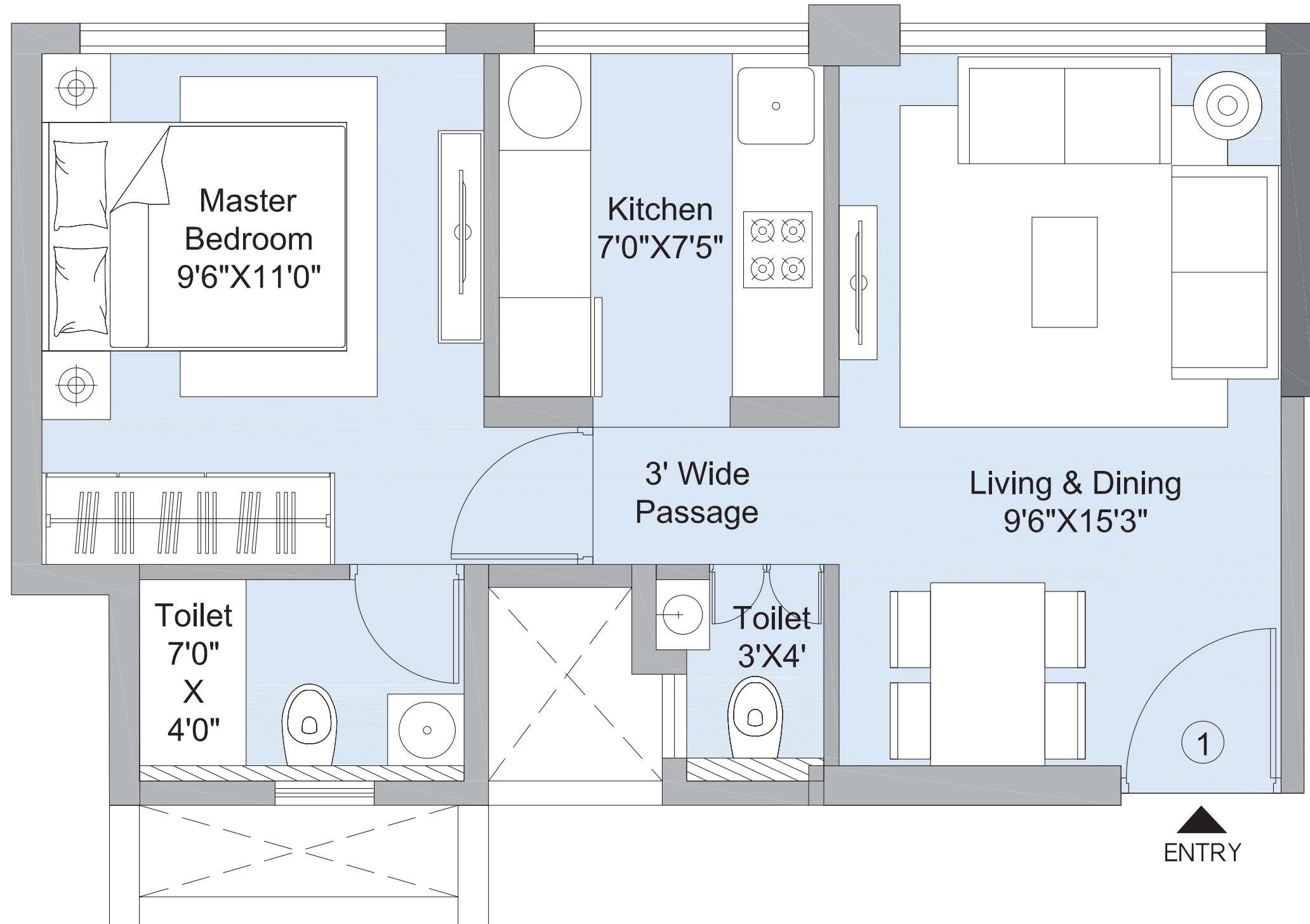
All amenities to be delivered on completion of the entire development in the layout. This document is representative of the approved layout with phasing/user superimposed, pertaining to the overall development of the layout and is a mere creative imagination and is only indicative. It may be modified and amended as mentioned in the Proforma Agreement for Sale uploaded on the MahaRERA website and permissible under applicable law. Amenity Open Space (AOS) to be handed over to MCGM.



## AN ALL-ENCOMPASSING LIFE.

When you own an all-inclusive address, your life becomes complete in every sense. Veridian, part of a sprawling 19-acre development in Powai, has been planned so thoughtfully that all your demands and desires are fulfilled and you live life 100%.

# TOWER 11A - UNIT NO. 1,4 (1 BHK OPTIMA)

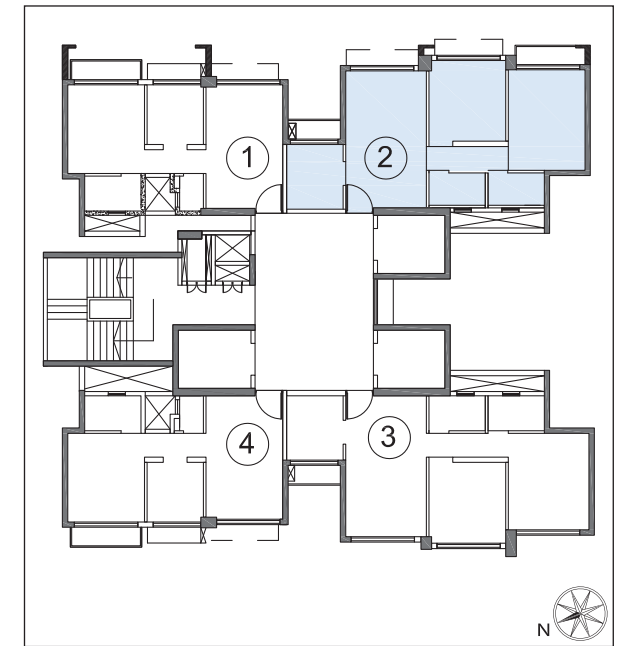
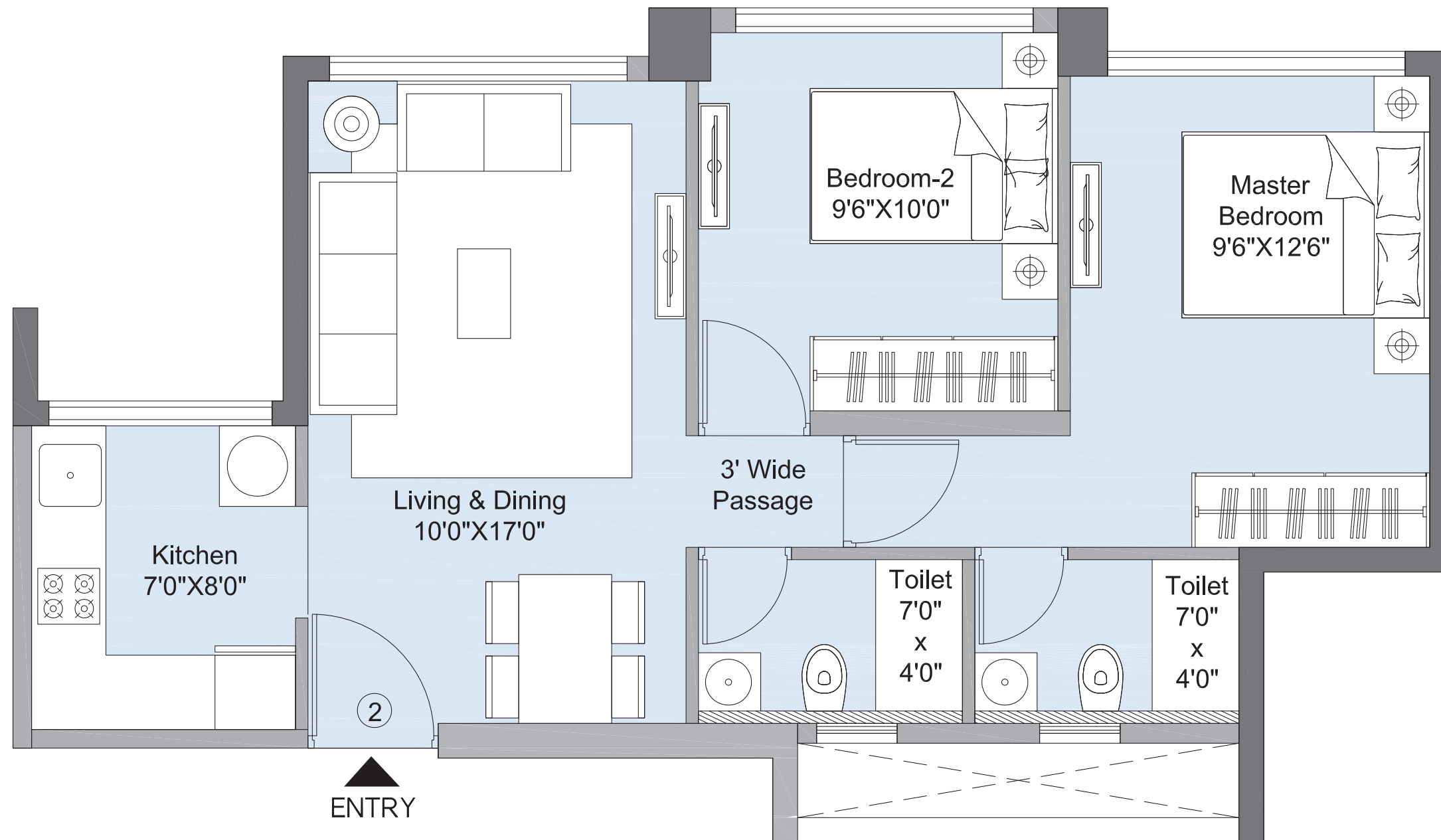


Key Plan

## 1 BHK OPTIMA

RERA AREA (SQ.FT.)
382.55

# TOWER 11A - UNIT NO. 2 (2 BHK ELITA)

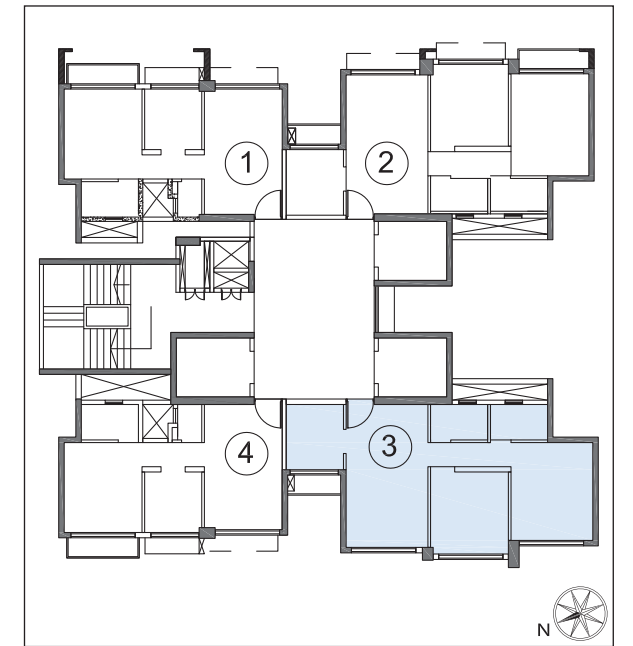
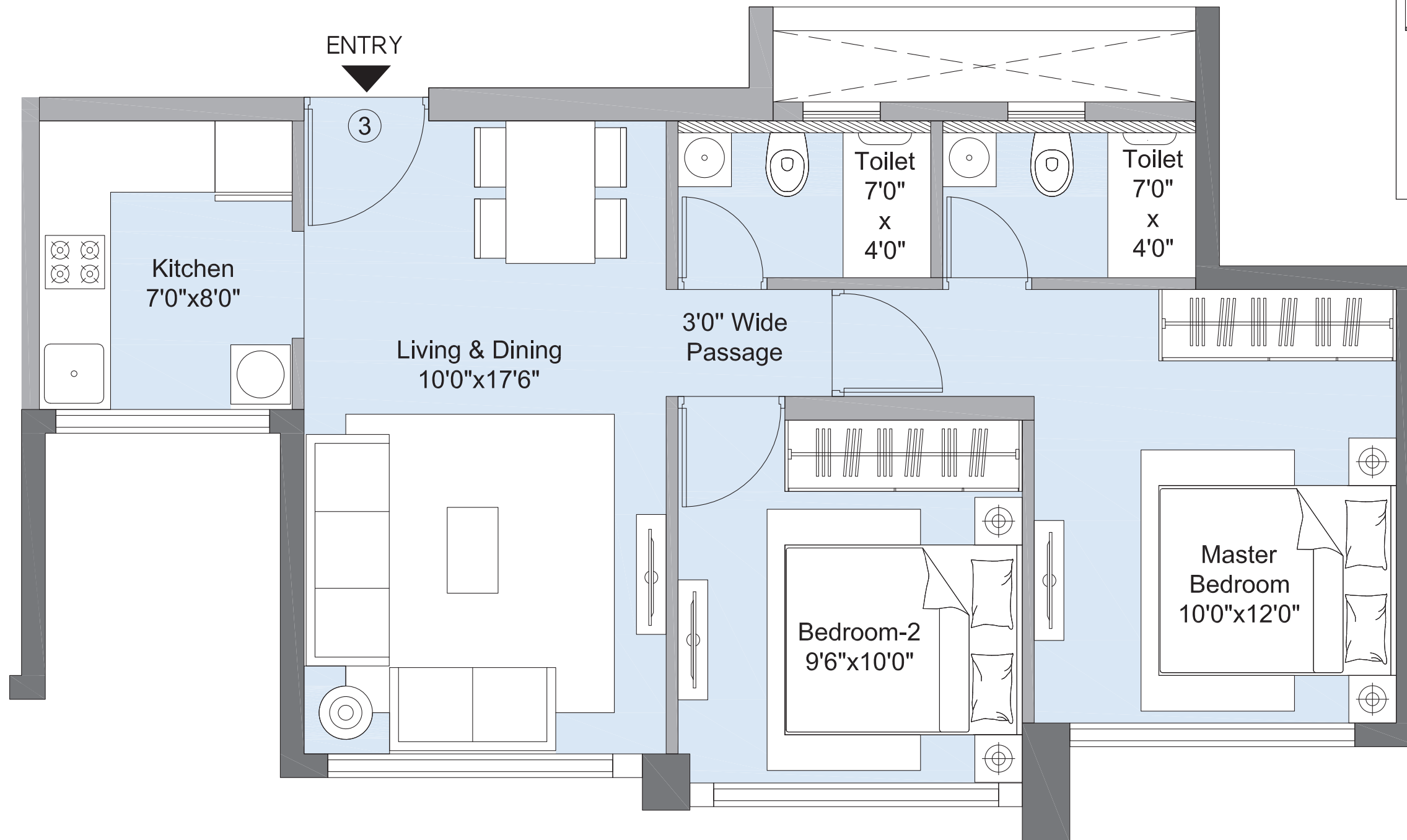


Key Plan

<b>2 BHK ELITA</b>
<b>RERA AREA</b>
<b>(SQ.FT.)</b>
<b>550.36</b>



# TOWER 11A - UNIT NO. 3 (2 BHK ELITA)

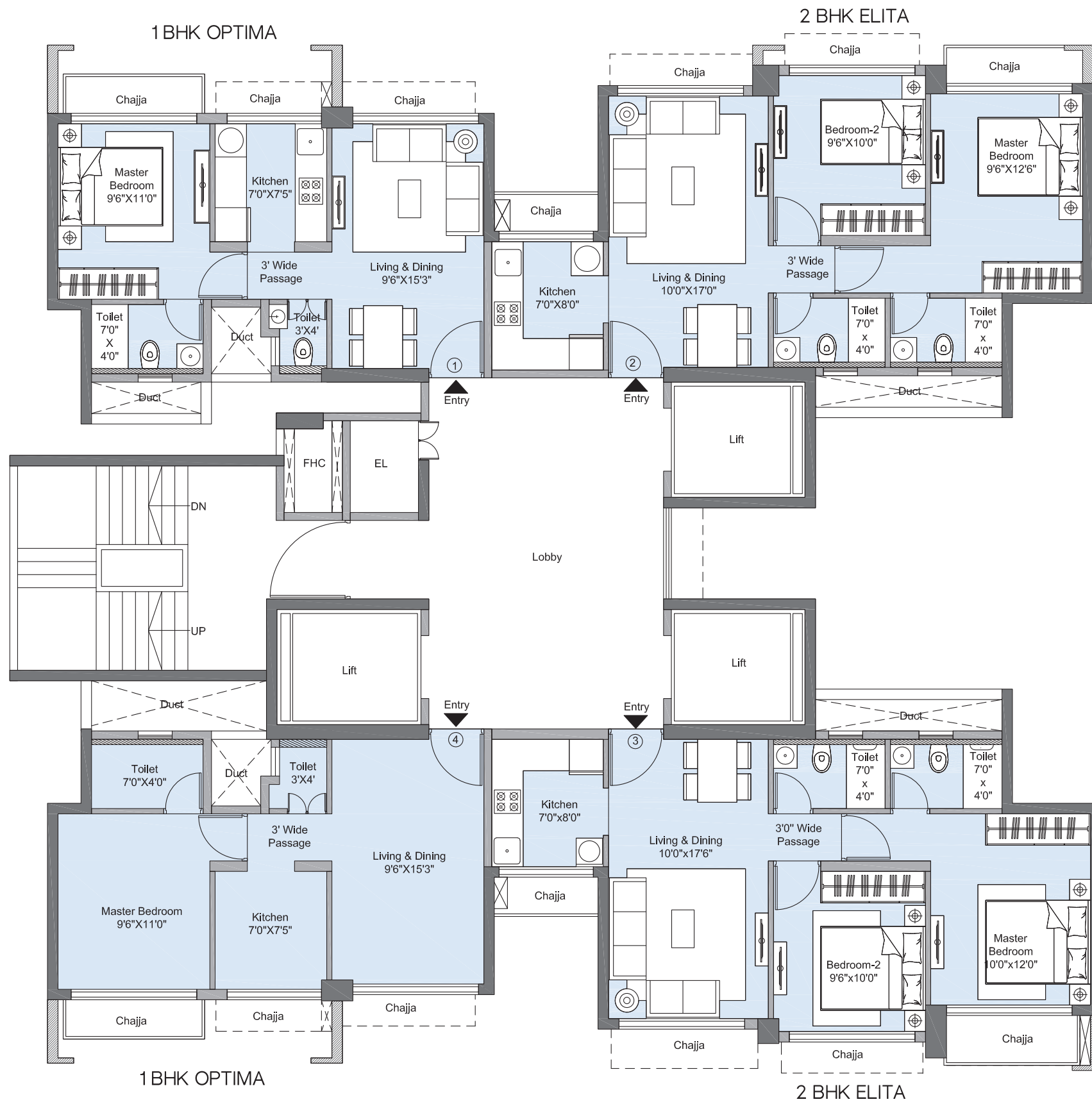


Key Plan

<b>2 BHK ELITA</b>
<b>RERA AREA</b>
<b>(SQ.FT.)</b>
<b>556.28</b>



# TOWER 11A - TYPICAL FLOOR

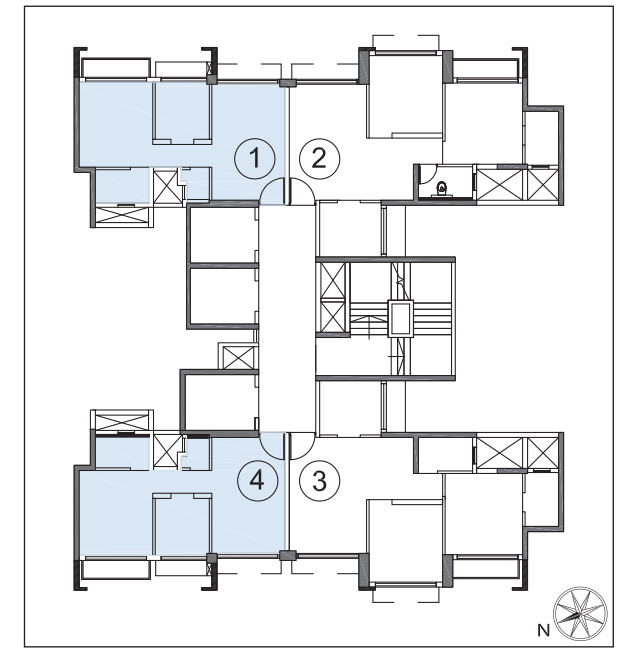
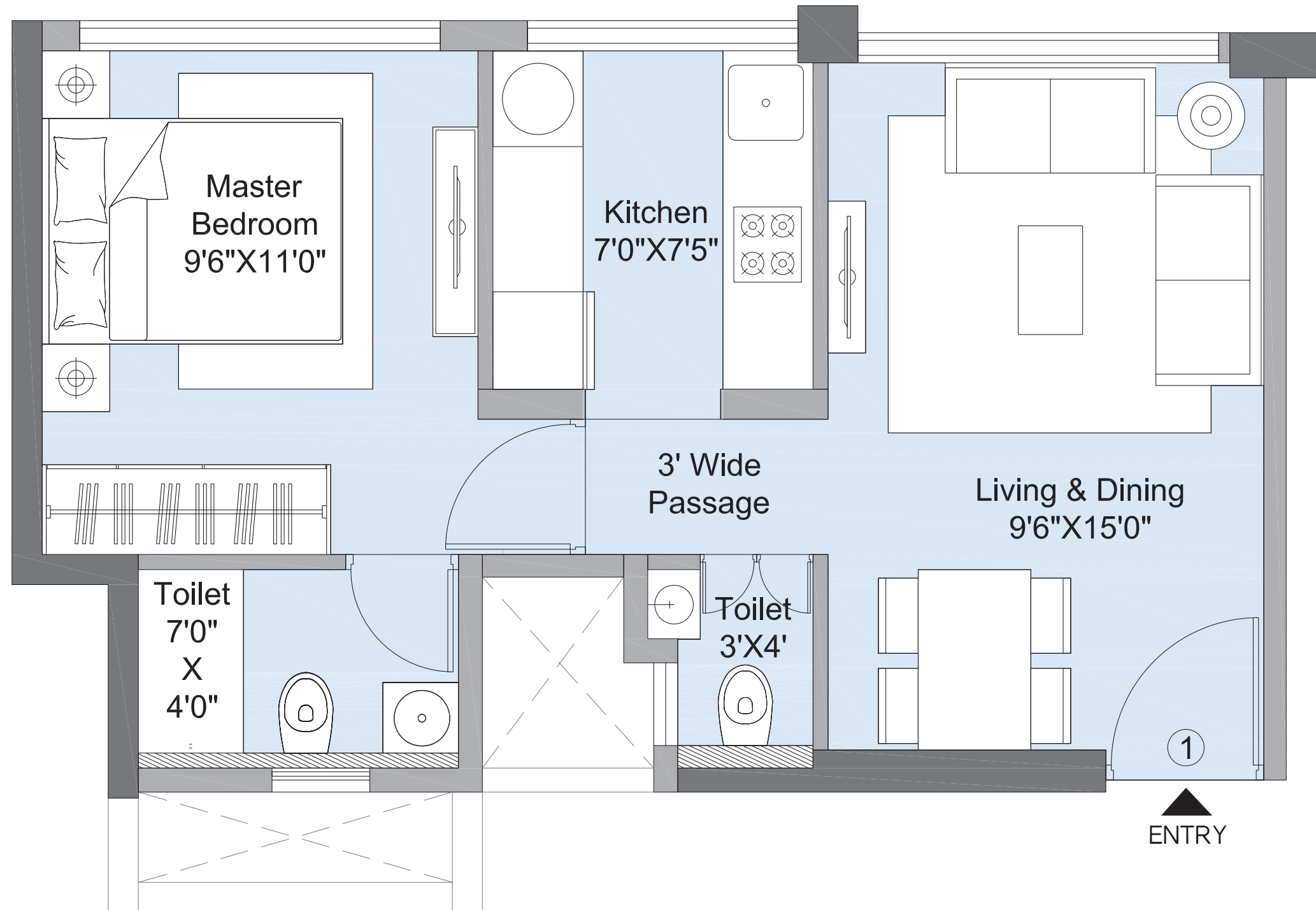


UNIT NO.	UNIT TYPE	RERA AREA (SQ.FT.)
1	1 BHK Optima	382.55
2	2 BHK Elita	550.36
3	2 BHK Elita	556.28
4	1 BHK Optima	382.55





# TOWER 11B - UNIT NO. 1,4 (1 BHK OPTIMA)



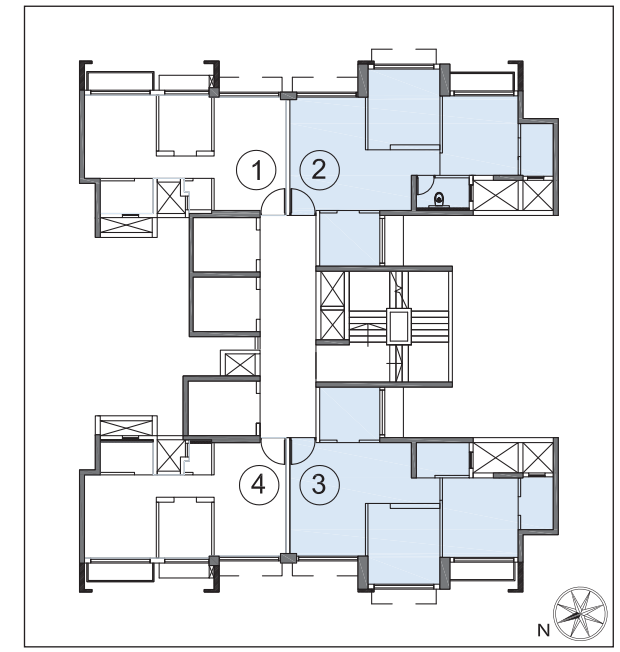
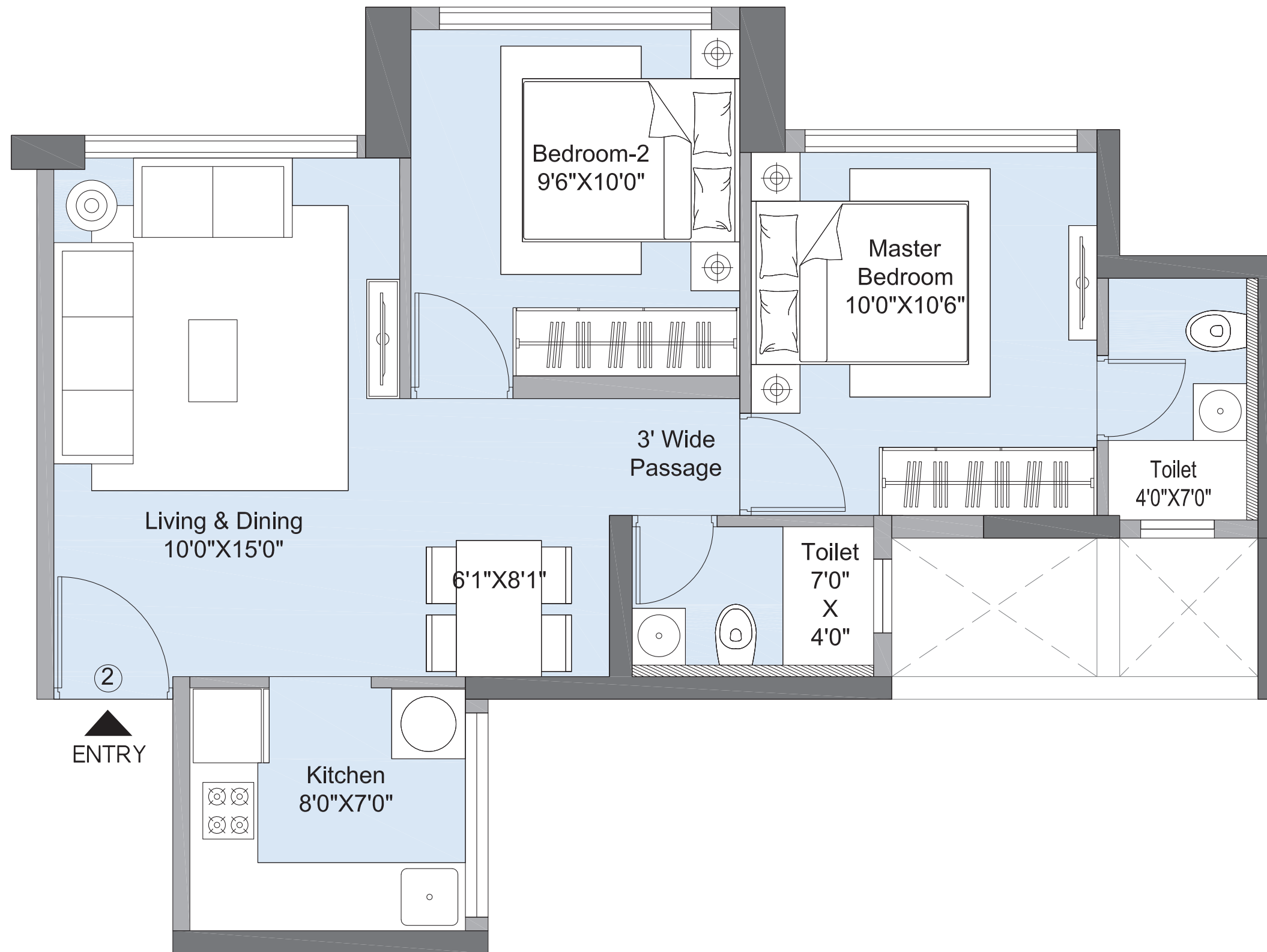
Key Plan

## 1 BHK OPTIMA

RERA AREA (SQ.FT.)
379.75



# TOWER 11B - UNIT NO. 2,3 (2 BHK ELITA)



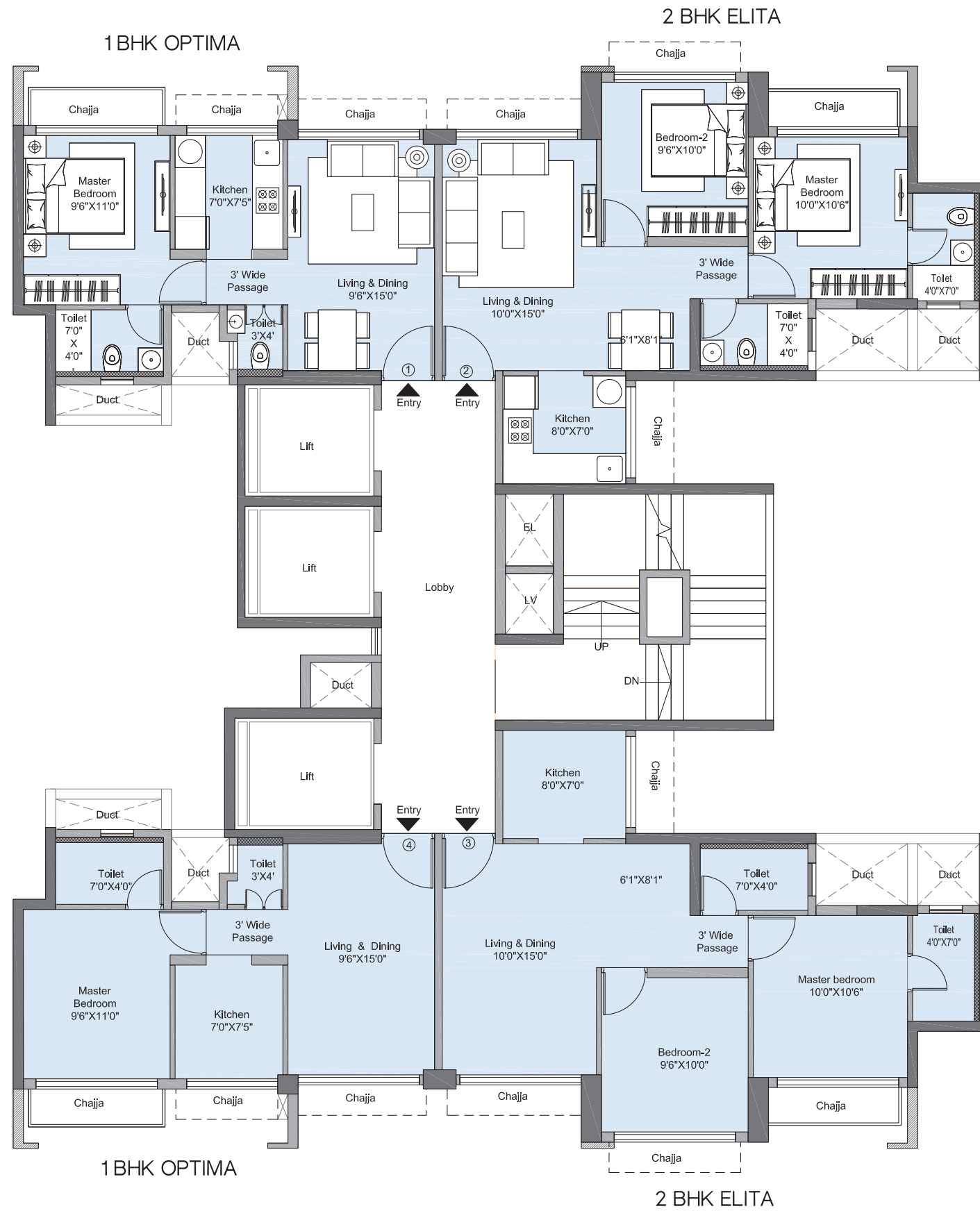
Key Plan

2 BHK ELITA
RERA AREA
(SQ.FT.)
549.82

MahaRERA, registered, details available at: <https://maharera.mahaonline.gov.in>



# TOWER 11B - TYPICAL FLOOR

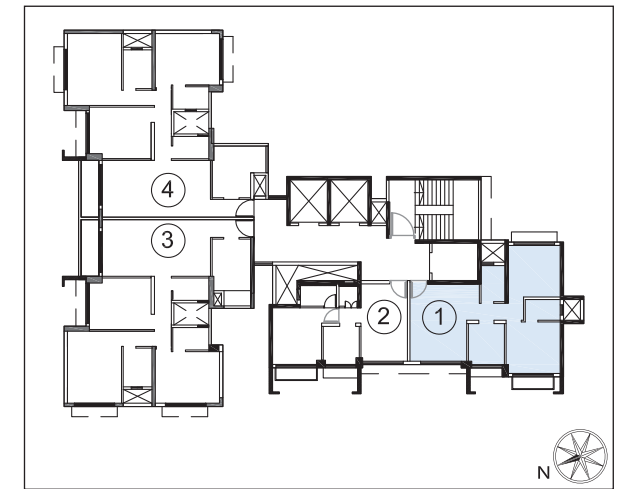
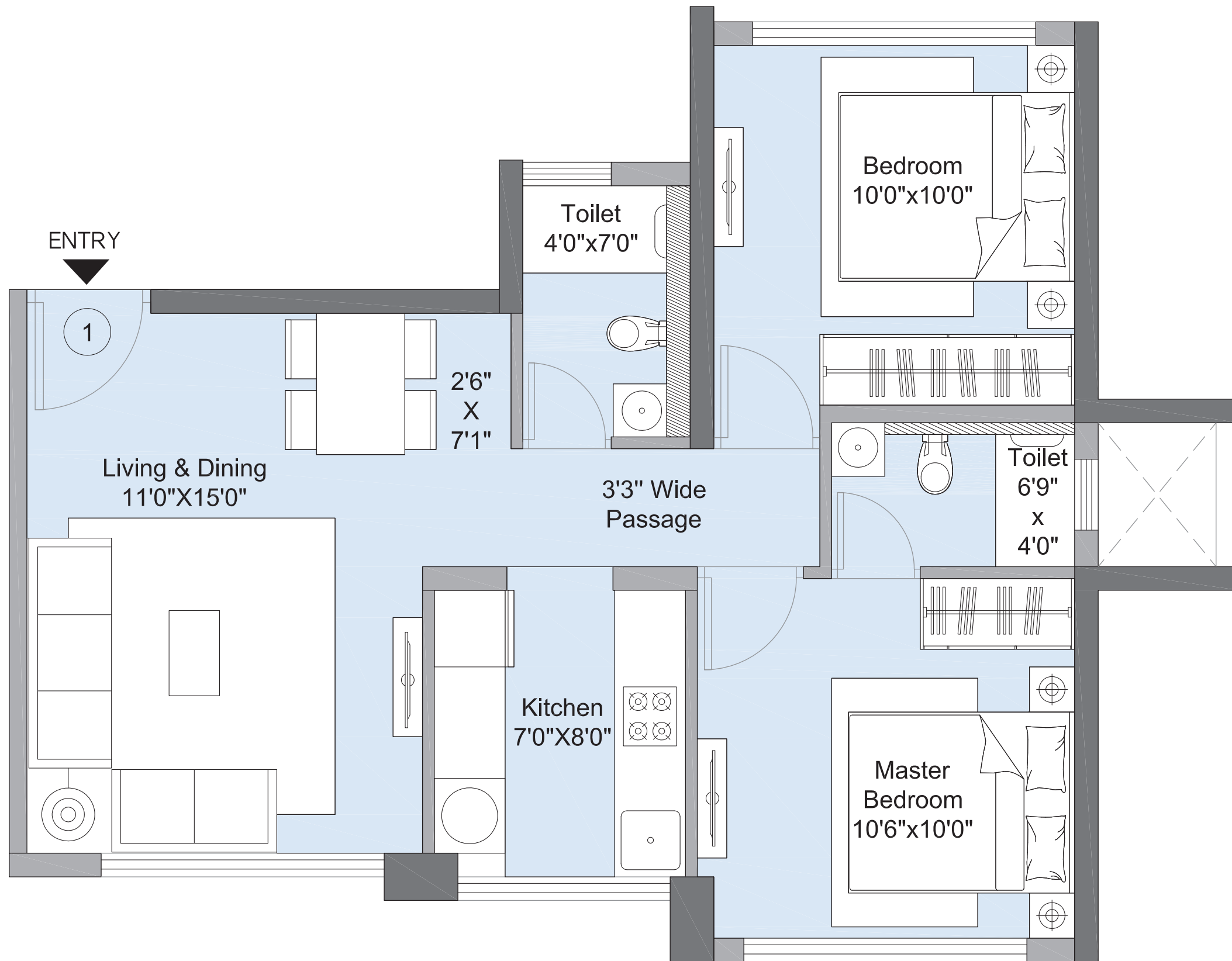


UNIT NO.	UNIT TYPE	RERA AREA (SQ.FT.)
1	1 BHK Optima	379.75
2	2 BHK Elita	549.82
3	2 BHK Elita	549.82
4	1 BHK Optima	379.75





# TOWER 12A - UNIT NO. 1 (2 BHK ELITA)



Key Plan

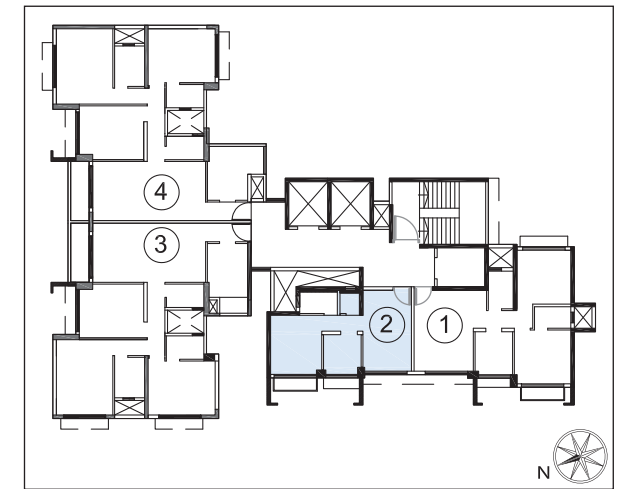
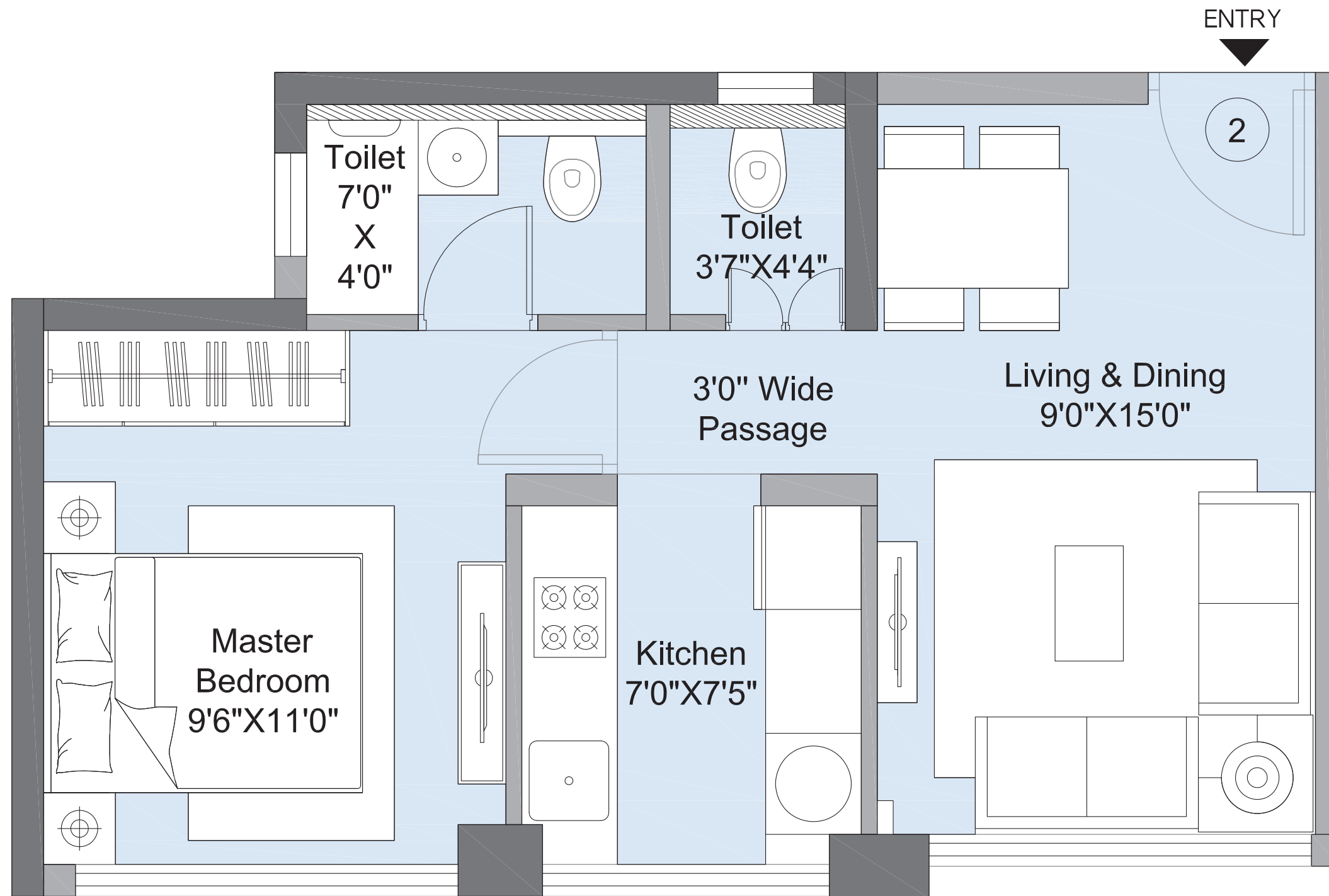
2 BHK ELITA

RERA AREA  
(SQ.FT.)

562.20



# TOWER 12A - UNIT NO. 2 (1 BHK OPTIMA)



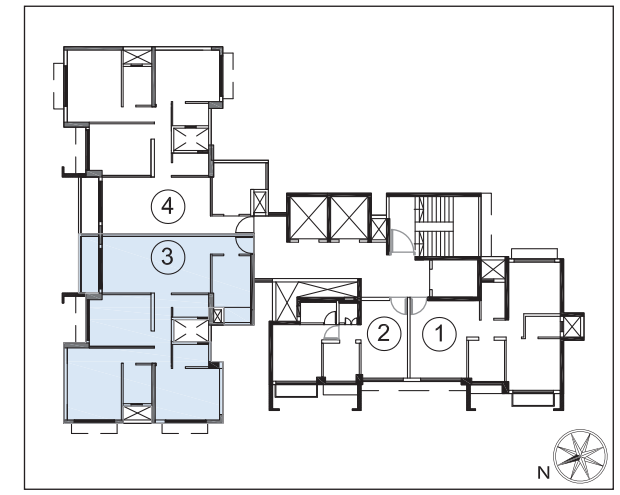
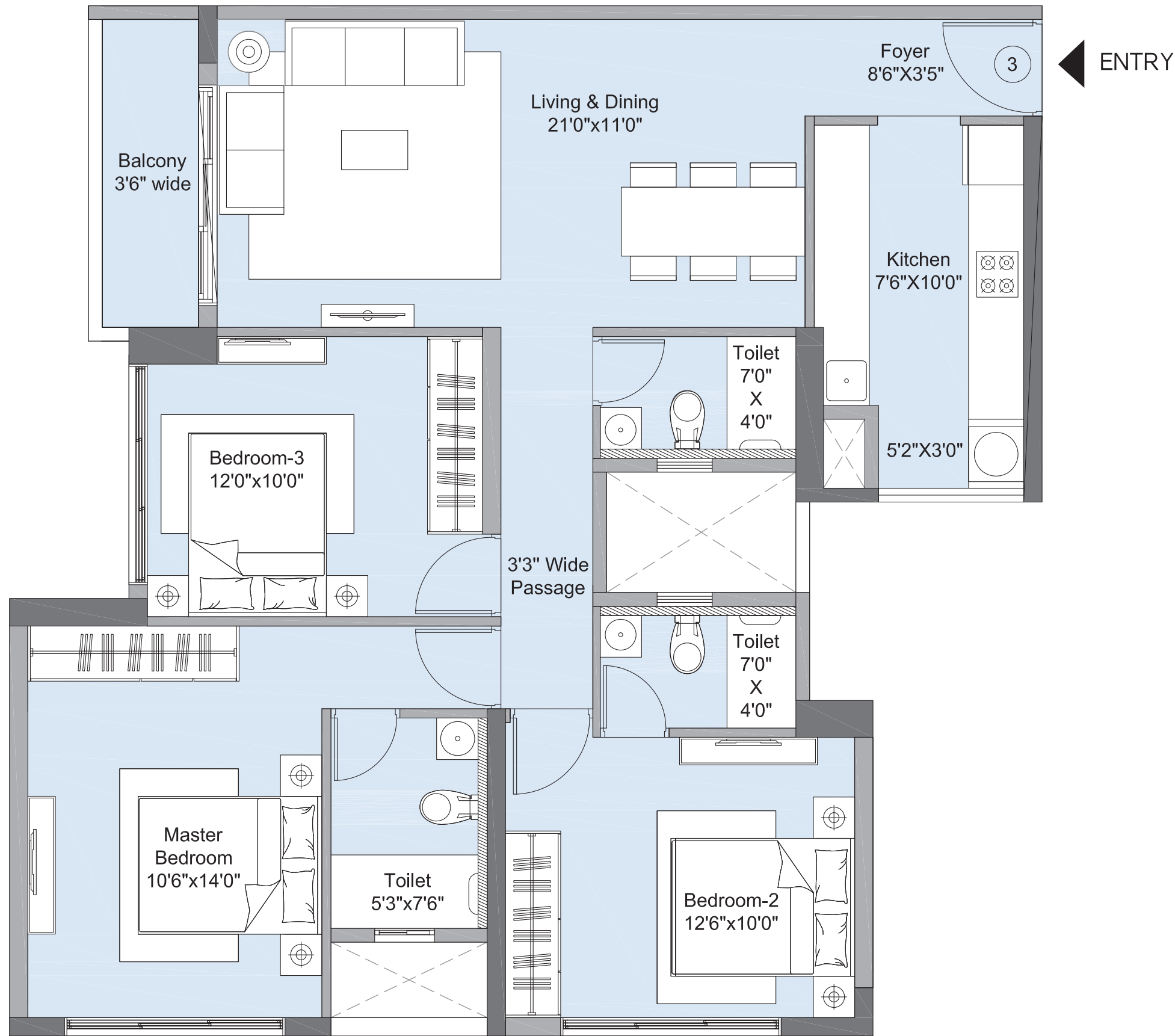
Key Plan

**1 BHK OPTIMA**

<b>RERA AREA</b>
<b>(SQ.FT.)</b>
<b>371.46</b>



# TOWER 12A - UNIT NO. 3 (3 BHK GRANDEUR)

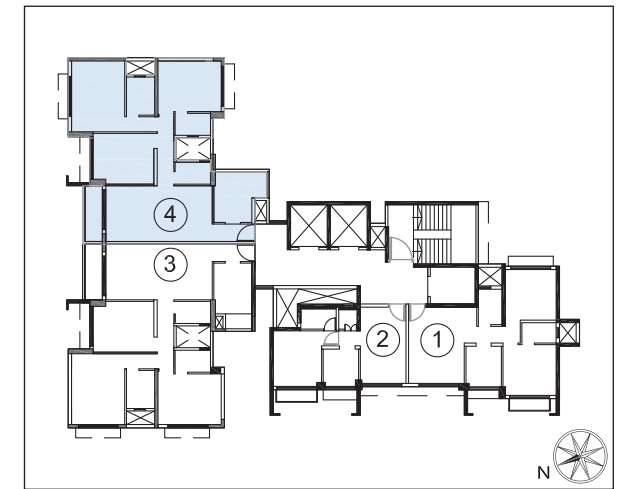


Key Plan

**3 BHK GRANDEUR**

RERA AREA (SQ.FT.)	ANCILLARY AREA (SQ.FT.)
951.42	37.86

# TOWER 12A - UNIT NO. 4 (3 BHK GRANDEUR)



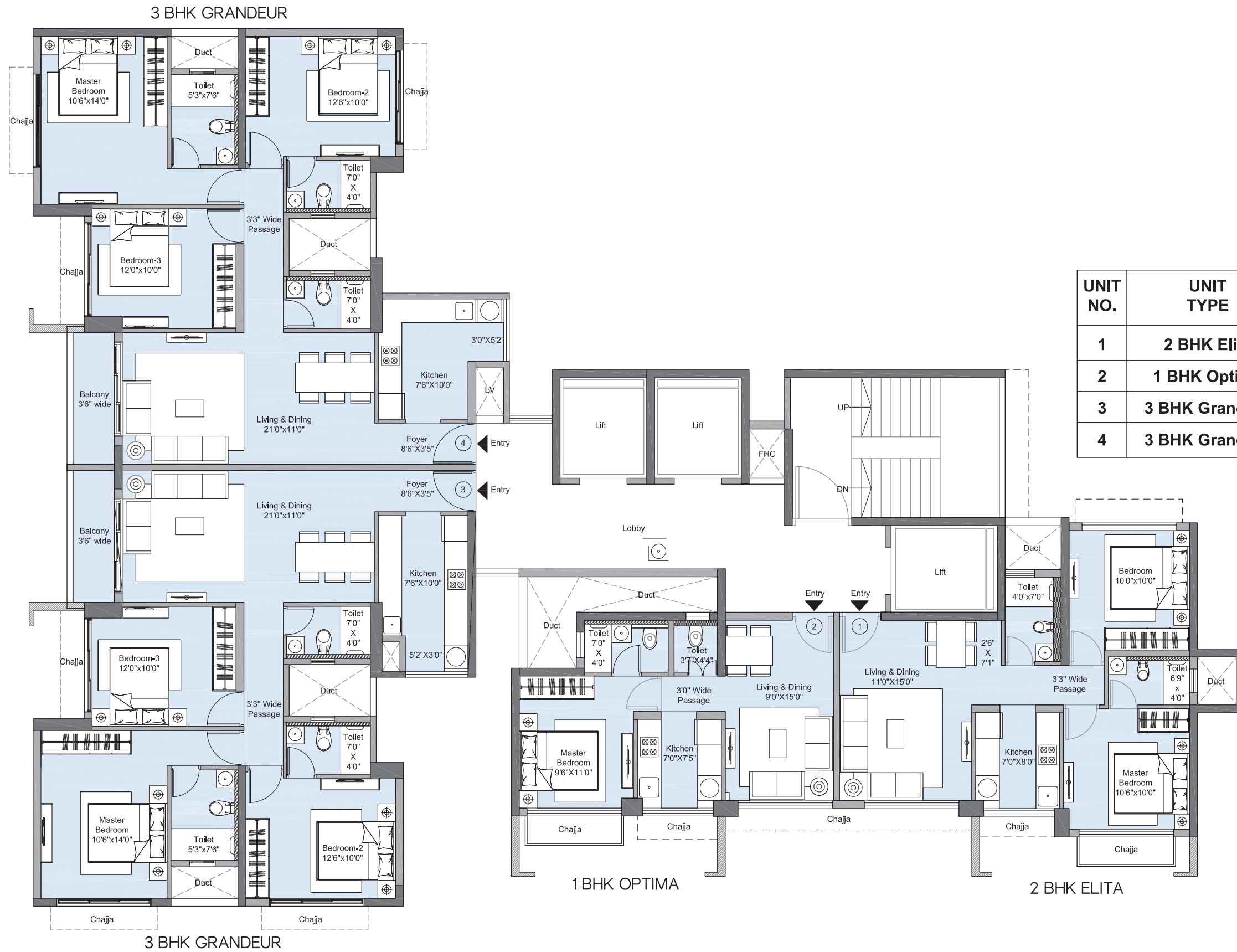
Key Plan

**3 BHK GRANDEUR**

RERA AREA (SQ.FT.)	ANCILLARY AREA (SQ.FT.)
951.42	37.86



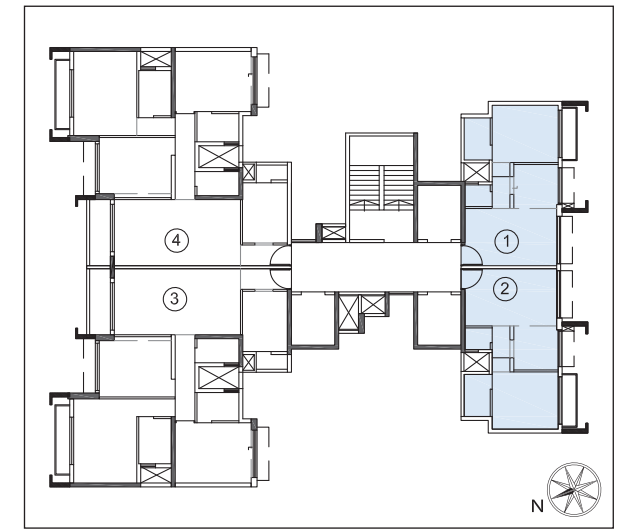
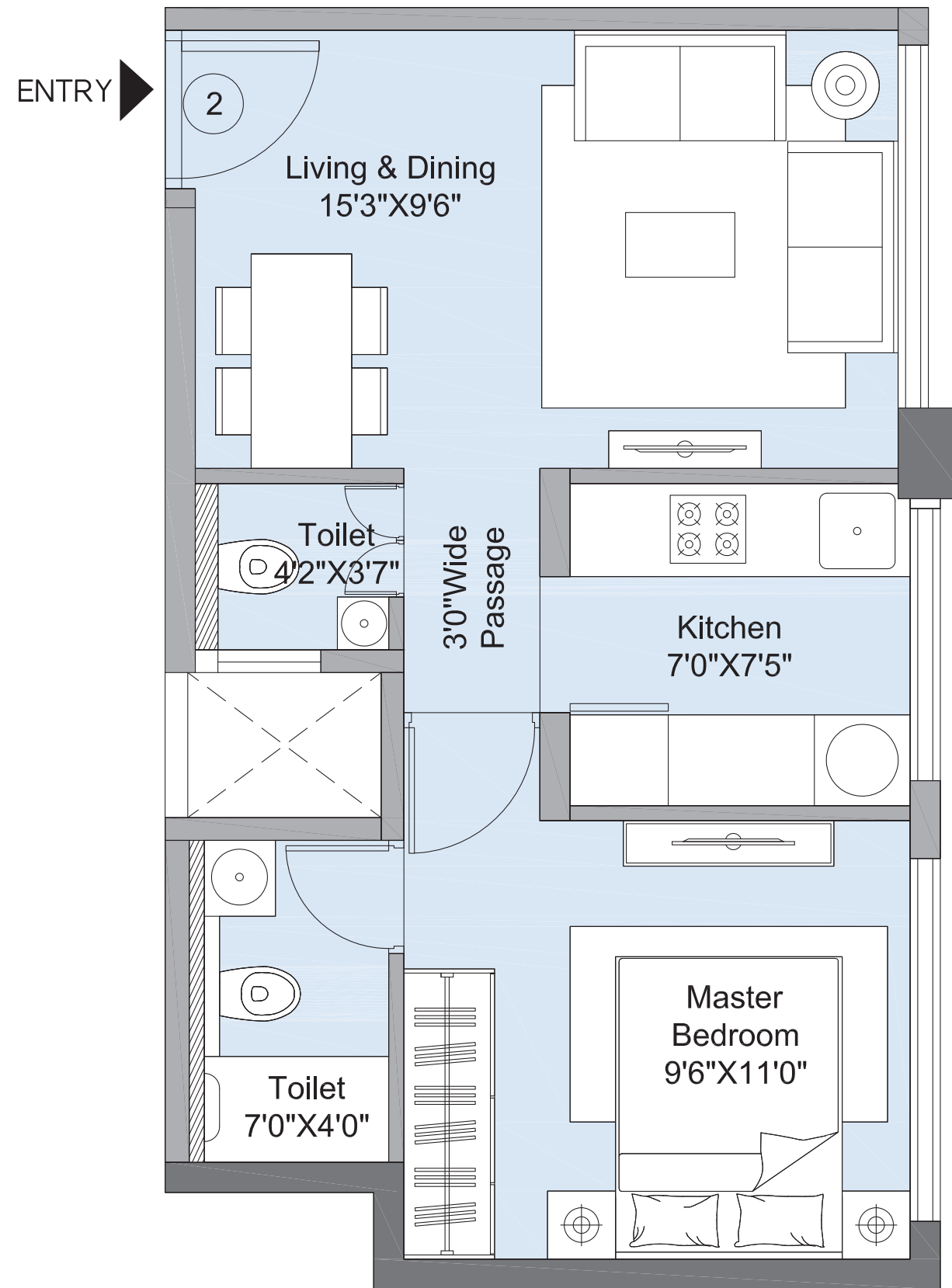
# TOWER 12A - TYPICAL FLOOR



UNIT NO.	UNIT TYPE	RERA AREA (SQ.FT.)	ANCILLARY AREA (SQ.FT.)
1	2 BHK Elita	562.20	-
2	1 BHK Optima	371.46	-
3	3 BHK Grandeur	951.42	37.86
4	3 BHK Grandeur	951.42	37.86



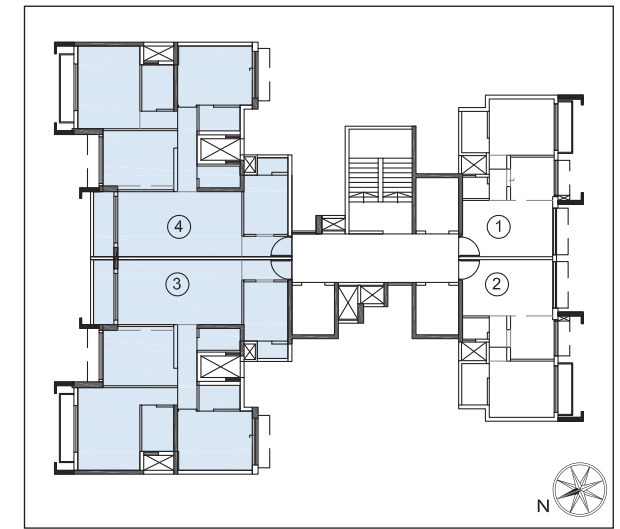
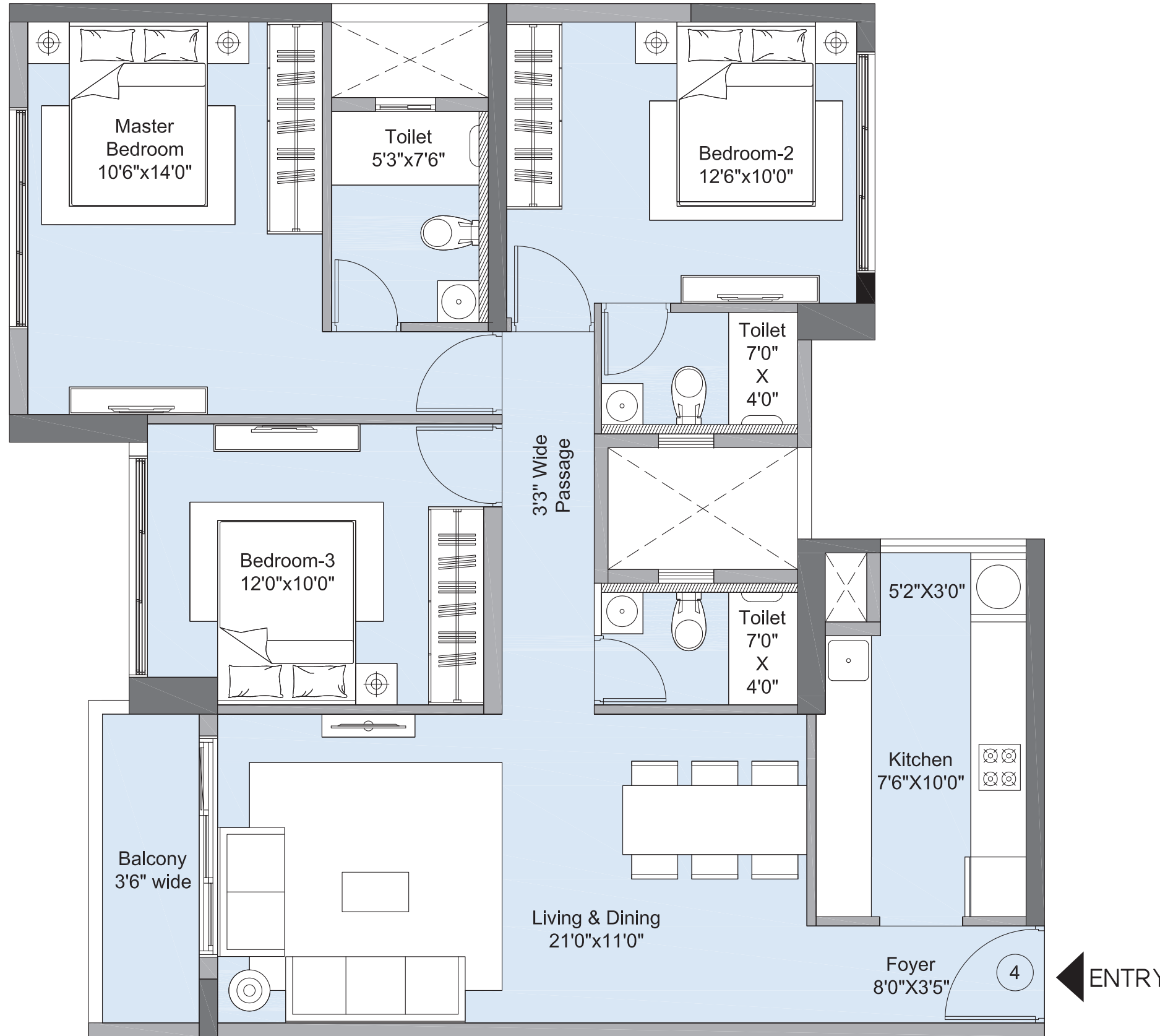
# TOWER 12B - UNIT NO. 1,2 (1 BHK OPTIMA)



<b>1 BHK OPTIMA</b>
<b>RERA AREA</b>
<b>(SQ.FT.)</b>
<b>383.84</b>



# TOWER 12B - UNIT NO. 3,4 (3 BHK GRANDEUR)

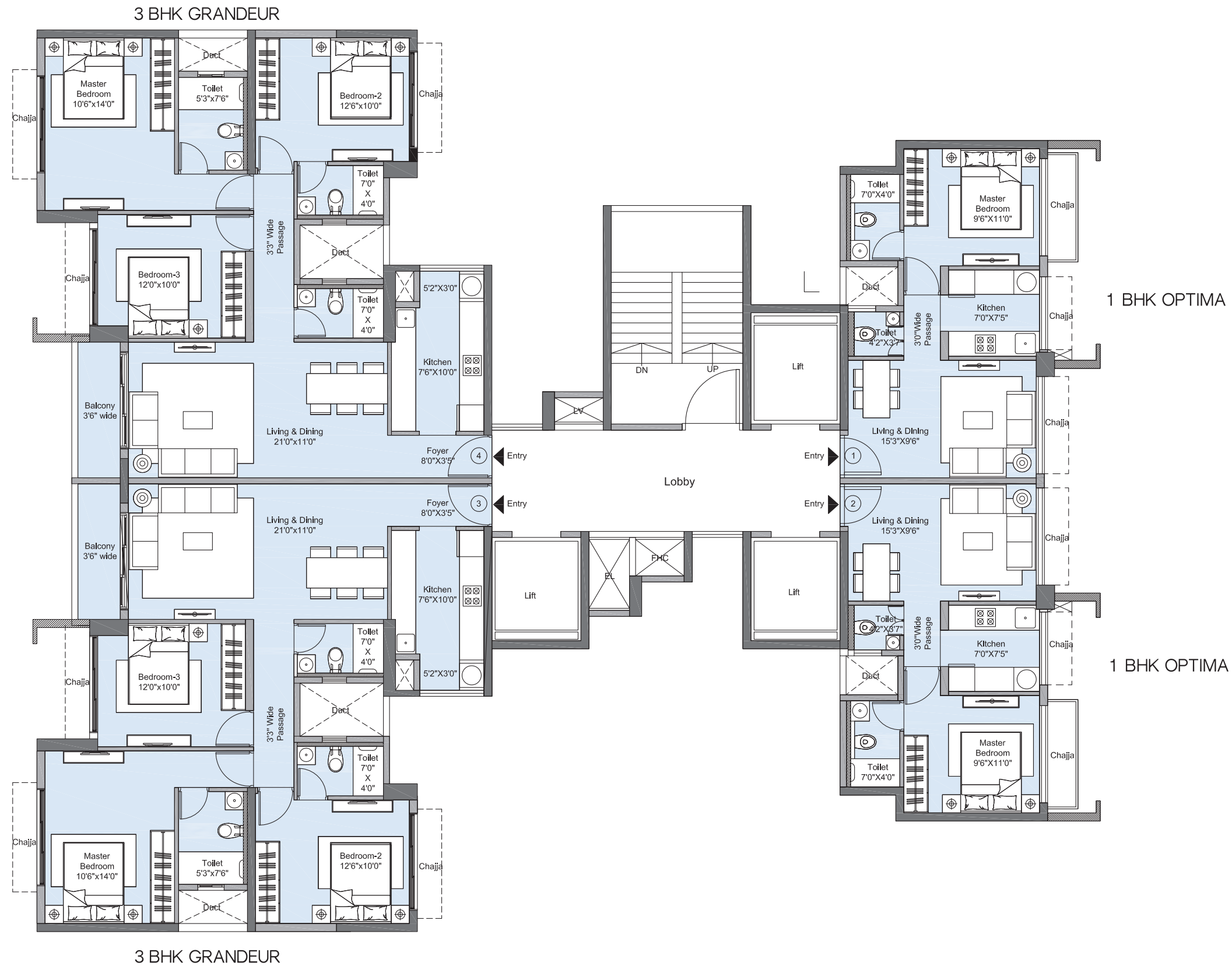


Key Plan

**3 BHK GRANDEUR**

RERA AREA (SQ.FT.)	ANCILLARY AREA (SQ.FT.)
951.42	37.86

# TOWER 12B - TYPICAL FLOOR



UNIT NO.	UNIT TYPE	RERA AREA (SQ.FT.)	ANCILLARY AREA (SQ.FT.)
1	1 BHK Optima	383.84	-
2	1 BHK Optima	383.84	-
3	3 BHK Grandeur	951.42	37.86
4	3 BHK Grandeur	951.42	37.86

