

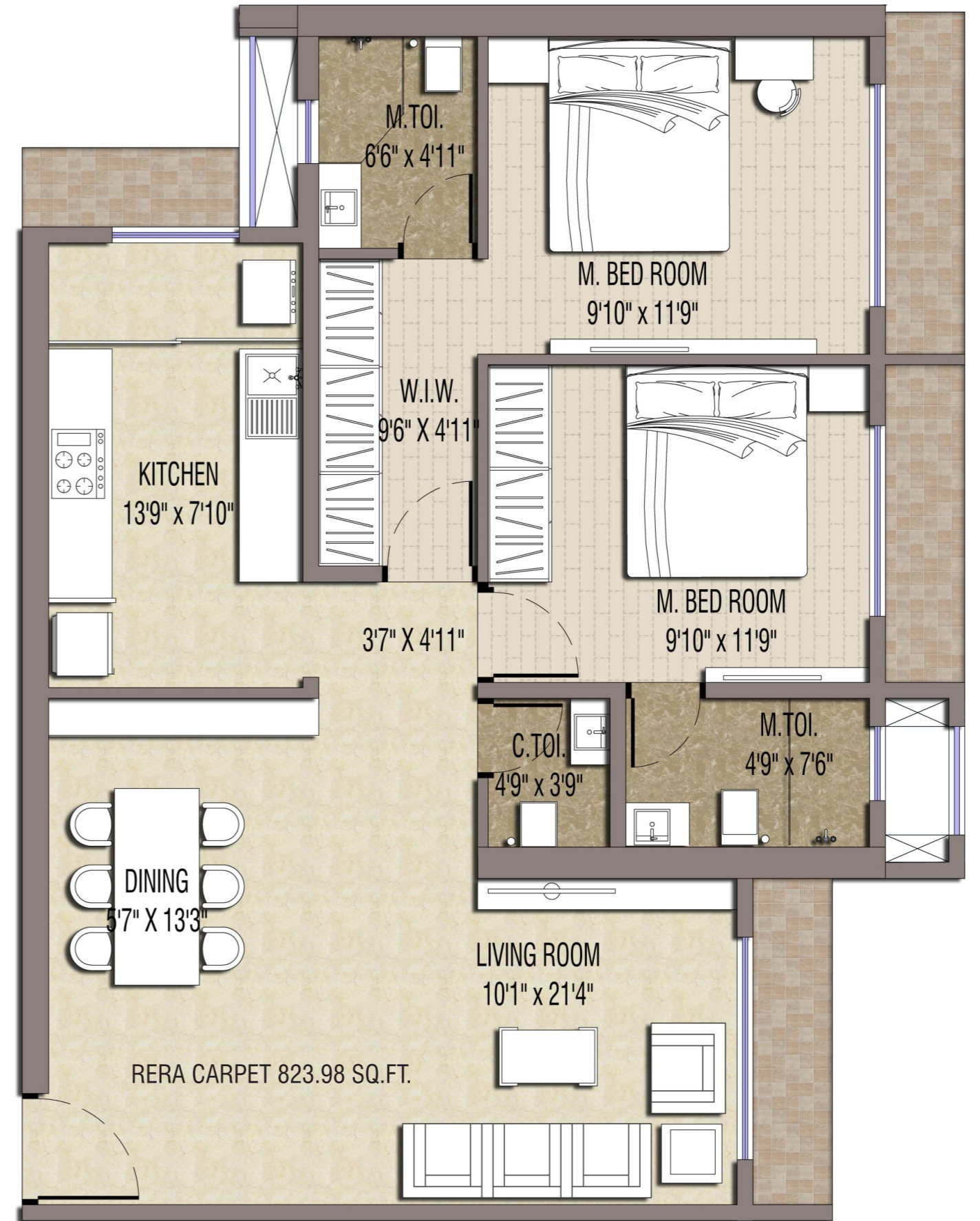
## TYPICAL FLOOR PLAN

001	-	823.98	Sq.Ft.
002	-	823.98	Sq.Ft.
003	-	1519.11	Sq.Ft.
004	-	823.98	Sq.Ft.
005	-	823.98	Sq.Ft.
006	-	1519.11	Sq.Ft.



## 2 BHK PLAN

LIVING ROOM & HALL	-	292.44 Sq.Ft.
KITCHEN	-	109.95 Sq.Ft.
M. BEDROOM 1	-	165.49 Sq.Ft.
M. BEDROOM 2	-	117.22 Sq.Ft.

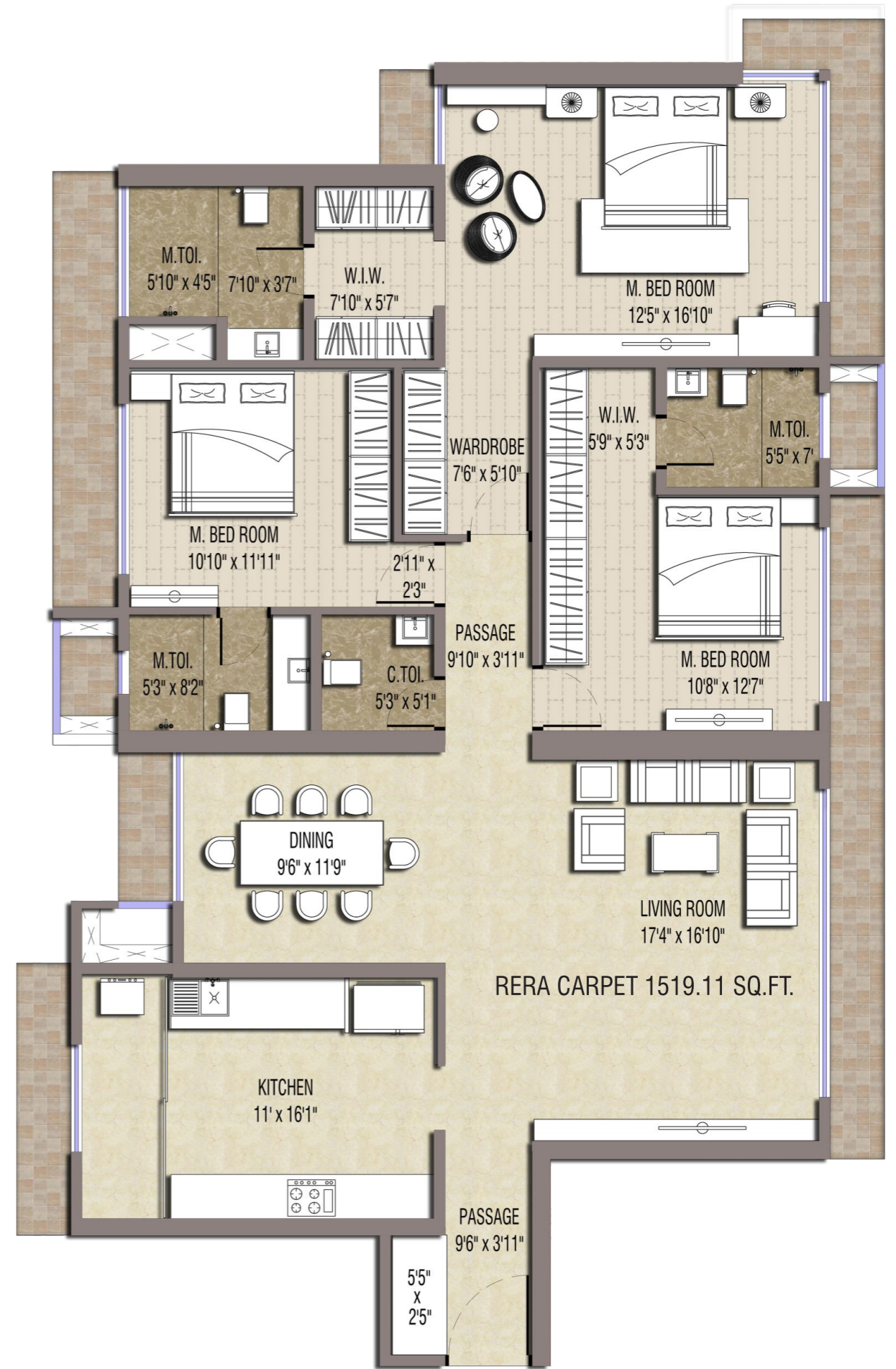


### Disclaimer:

1. Room Dimensions & Usable Area Indicated Are Measured Considering Unfinished Wall Surfaces
2. Minor Variations (+/-3%) In Actual Carpet Areas May Occur As A Result Of Finishing Tolerances & Column Projections
3. The Furniture Fixtures & Equipment (ff & E) Indicated Above Depicts Proposed Interior Arrangement As Envisaged By The Architect & Is Not A Part Of The Product Offering.
4. This Is A Proposed Plan & Is Subject To Approval From Municipal Authorities.
5. Door Indicated For The Kitchen Is For Representative Purpose And Not A Part Of Standard Offering / Amenity Provided.

### 3 BHK PLAN

LIVING ROOM & HALL	-	406.18 Sq.Ft.
KITCHEN	-	178.34 Sq.Ft.
M. BEDROOM 1	-	304.25 Sq.Ft.
M. BEDROOM 2	-	165.79 Sq.Ft.
M. BEDROOM 3	-	136.43 Sq.Ft.

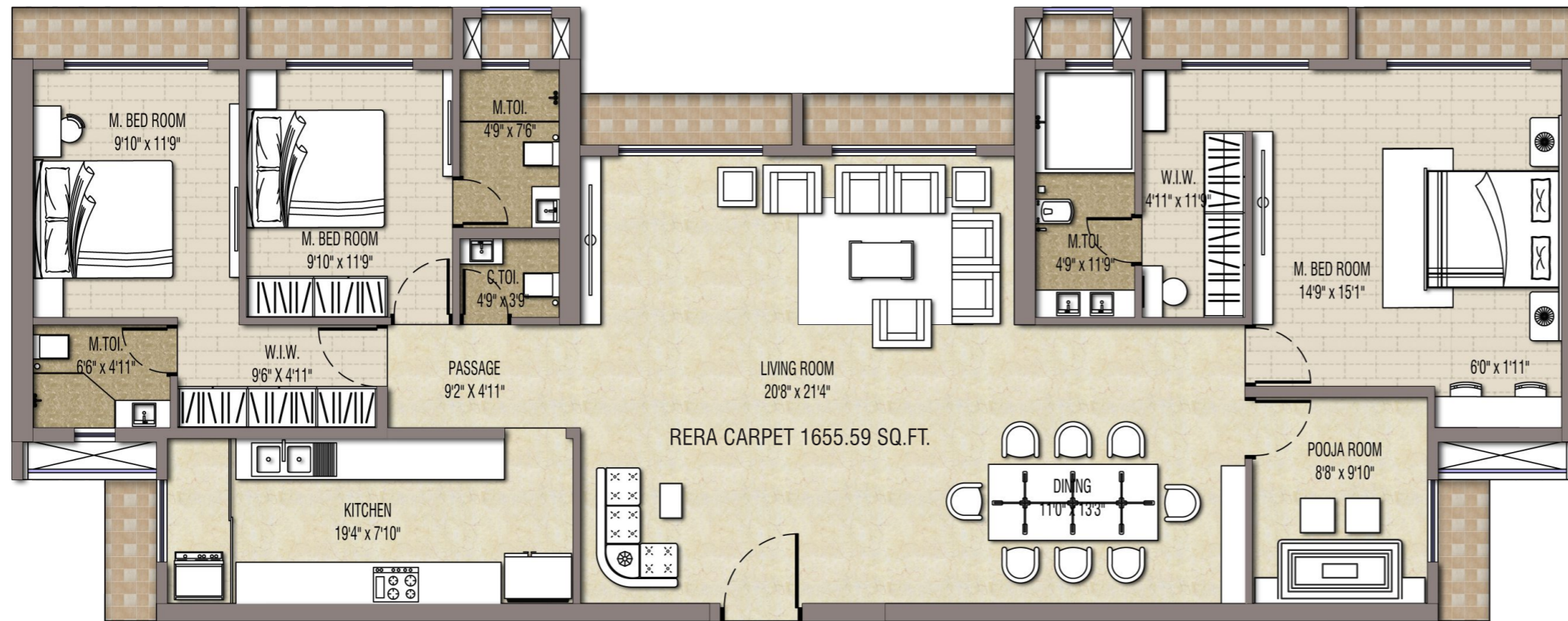


**Disclaimer:**

1. Room Dimensions & Usable Area Indicated Are Measured Considering Unfinished Wall Surfaces
2. Minor Variations (+/-3%) In Actual Carpet Areas May Occur As A Result Of Finishing Tolerances & Column Projections
3. The Furniture Fixtures & Equipment (ff & E) Indicated Above Depicts Proposed Interior Arrangement As Envisaged By The Architect & Is Not A Part Of The Product Offering.
4. This Is A Proposed Plan & Is Subject To Approval From Municipal Authorities.
5. Door Indicated For The Kitchen Is For Representative Purpose And Not A Part Of Standard Offering / Amenity Provided.

## 2 BHK JODI PLAN

LIVING ROOM & HALL	-	590.76	Sq.Ft.
KITCHEN	-	153.87	Sq.Ft.
M. BEDROOM 1	-	294.83	Sq.Ft.
M. BEDROOM 2	-	165.49	Sq.Ft.
M. BEDROOM 3	-	117.22	Sq.Ft.
POOJA / MSC ROOM	-	83.31	Sq.Ft.



### Disclaimer:

1. Room Dimensions & Usable Area Indicated Are Measured Considering Unfinished Wall Surfaces
2. Minor Variations (+/-3%) In Actual Carpet Areas May Occur As A Result Of Finishing Tolerances & Column Projections
3. The Furniture Fixtures & Equipment (ff & E) Indicated Above Depicts Proposed Interior Arrangement As Envisaged By The Architect & Is Not A Part Of The Product Offering.
4. This Is A Proposed Plan & Is Subject To Approval From Municipal Authorities.
5. Door Indicated For The Kitchen Is For Representative Purpose And Not A Part Of Standard Offering / Amenity Provided.
6. The locations of walls mentioned in the 2 BHK Jodi are not as per actual. Wall location seen is as envisioned by architect.