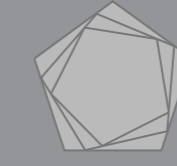
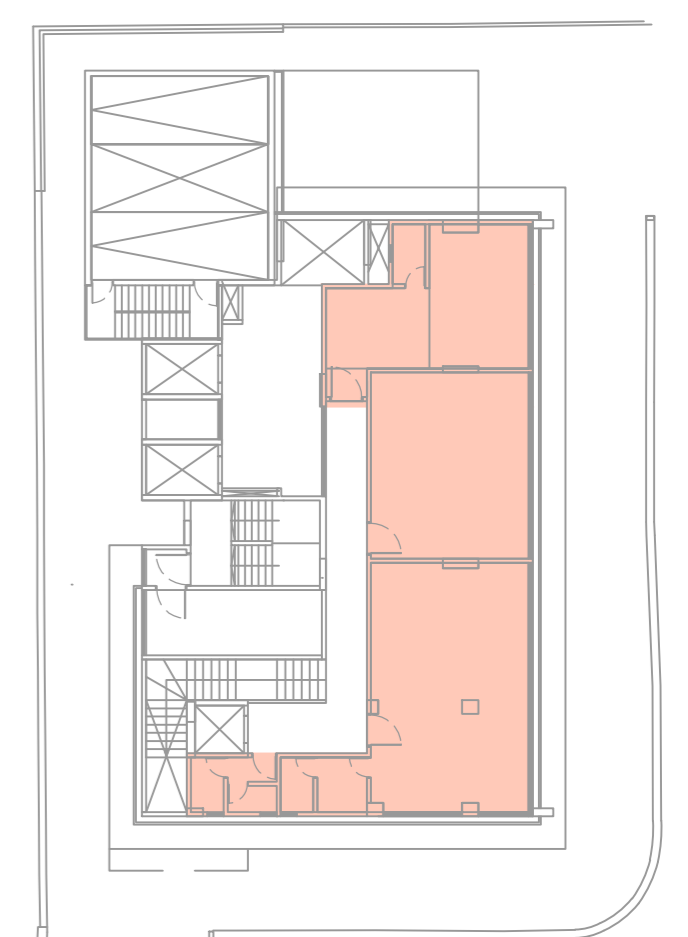
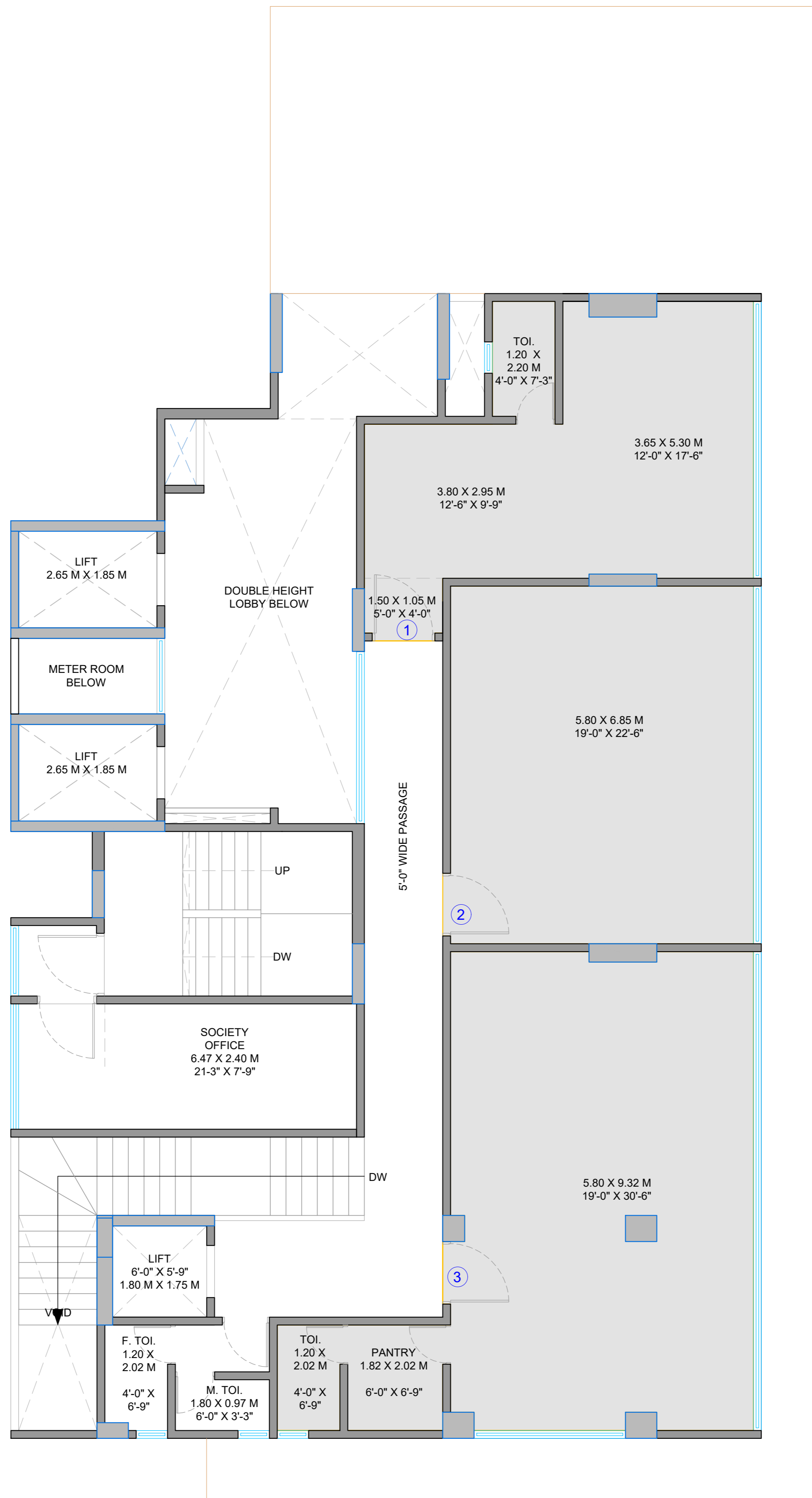


# 1ST FLOOR PLAN

ADVENT NEEL BY REGENT ASSOCIATES



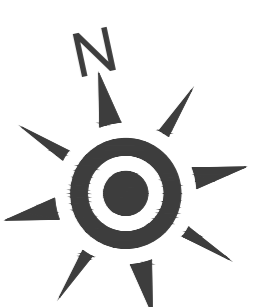
PENTASPACE  
CONSULTANTS PVT LTD



KEY PLAN

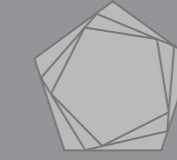
Disclaimer: The plans, designs, and dimensions are as per current sanctioned plans and approvals. Specifications, amenities, and facilities will be as set out in the agreement for sale as uploaded on the RERA website (<https://maharera.mahaonline.gov.in>). The same may be subject to modification/change/revision/alteration in terms of approvals, orders, directions and/or regulations of the concerned/relevant authorities, and/or for compliance with laws/regulations in force from time to time and/or in line with our customer policies. We may modify/alter the above by following due procedure as prescribed under the Real Estate (Regulation and Development) Act, 2017, ("RERA") read with the provisions of the Maharashtra Real Estate (Regulation and Development) Act, 2017, ("RERA") read with the provisions of the Maharashtra Real Estate (Regulation and Development) Act, 2017 and the Rules and Regulations framed under RERA for Maharashtra ("RERA Rules").

NO.	TYPE	RERA CARPET AREA		MOFA C.AREA
1	COMMERCIAL 1	381.80 SQ FT	35.47 SQ MTS.	372.05 SQ FT
2	COMMERCIAL 2	429.49 SQ FT	39.90 SQ MTS.	429.53 SQ FT
3	COMMERCIAL 3	646.50 SQ FT	60.06 SQ MTS.	634.18 SQ FT

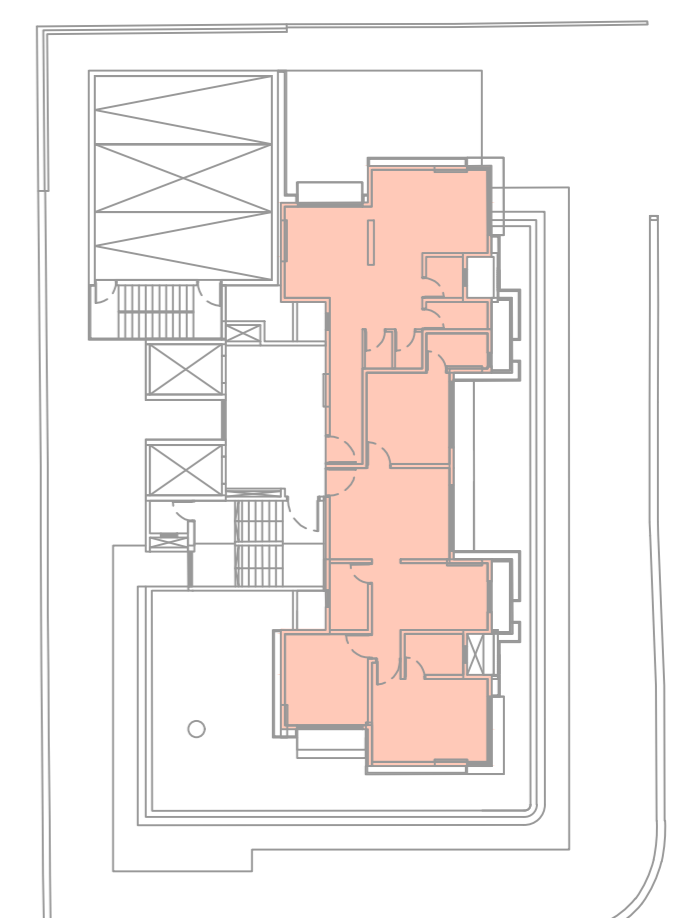
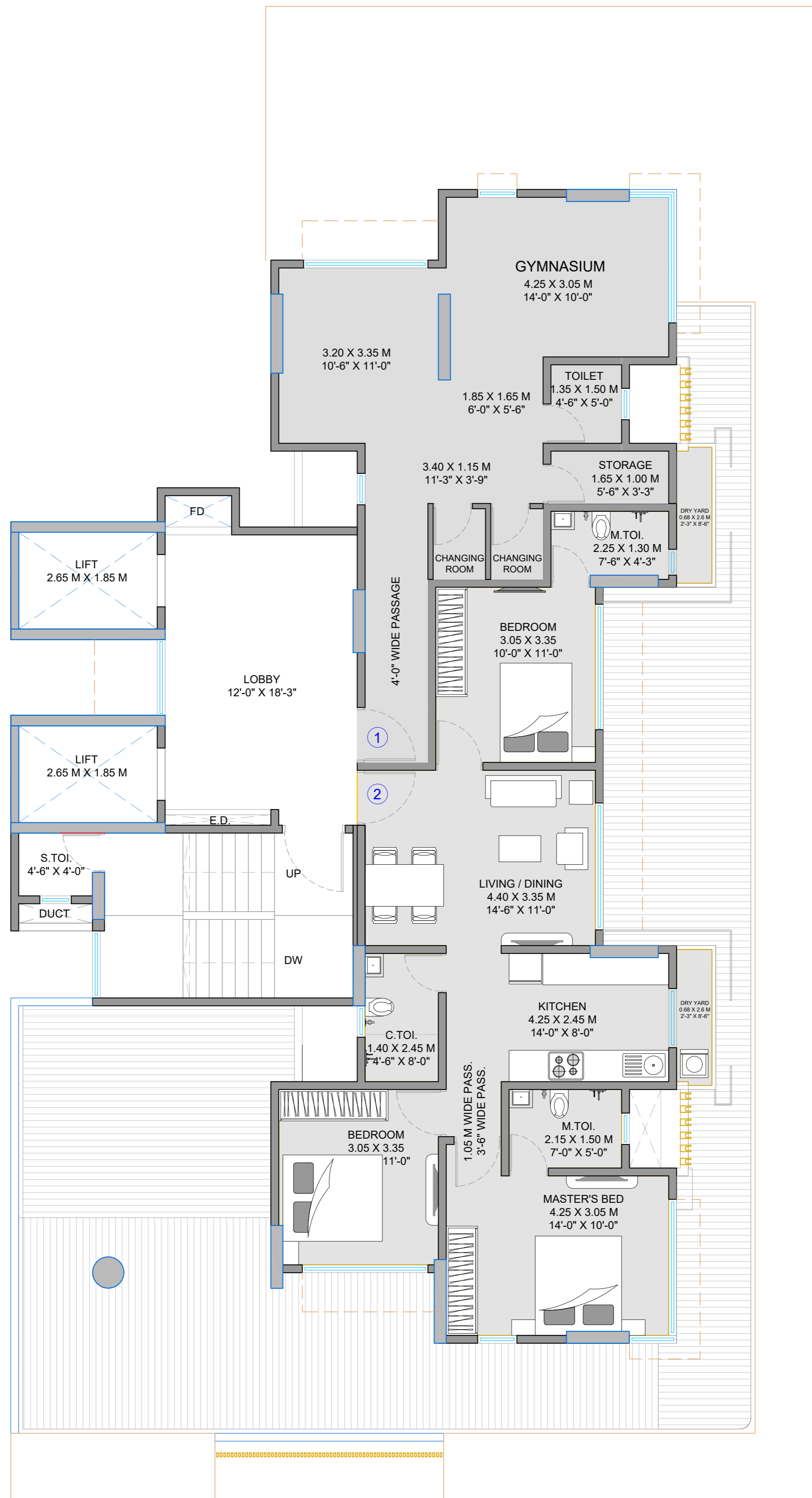


# 2ND FLOOR PLAN

ADVENT NEEL BY REGENT ASSOCIATES



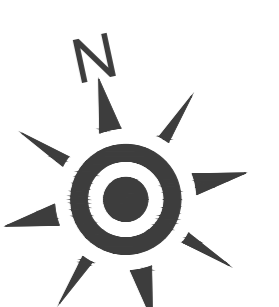
PENTASPACE  
CONSULTANTS PVT LTD



KEY PLAN

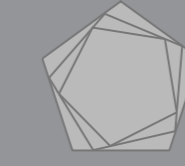
Disclaimer: The plans, designs, and dimensions are as per current sanctioned plans and approvals. Specifications, amenities, and facilities will be as set out in the agreement for sale as uploaded on the RERA website (<https://maharera.mahaonline.gov.in>). The same may be subject to modification/change/revision/alteration in terms of approvals, orders, directions and/or regulations of the concerned/relevant authorities, and/or for compliance with laws/regulations in force from time to time and/or in line with our customer policies. We may modify/alter the above by following due procedure as prescribed under the Real Estate (Regulation and Development) Act, 2017, ("RERA") read with the provisions of the Maharashtra Real Estate (Regulation and Development) Act, 2017, ("RERA") read with the provisions of the Maharashtra Real Estate (Regulation and Development) Act, 2017 and the Rules and Regulations framed under RERA for Maharashtra ("RERA Rules").

NO.	TYPE	RERA CARPET AREA	MOFA C.AREA
1	GYMNASIUM	527.77 SQ FT	49.03 SQ MTS.
2	3BHK	830.66 SQ FT	77.17 SQ MTS.

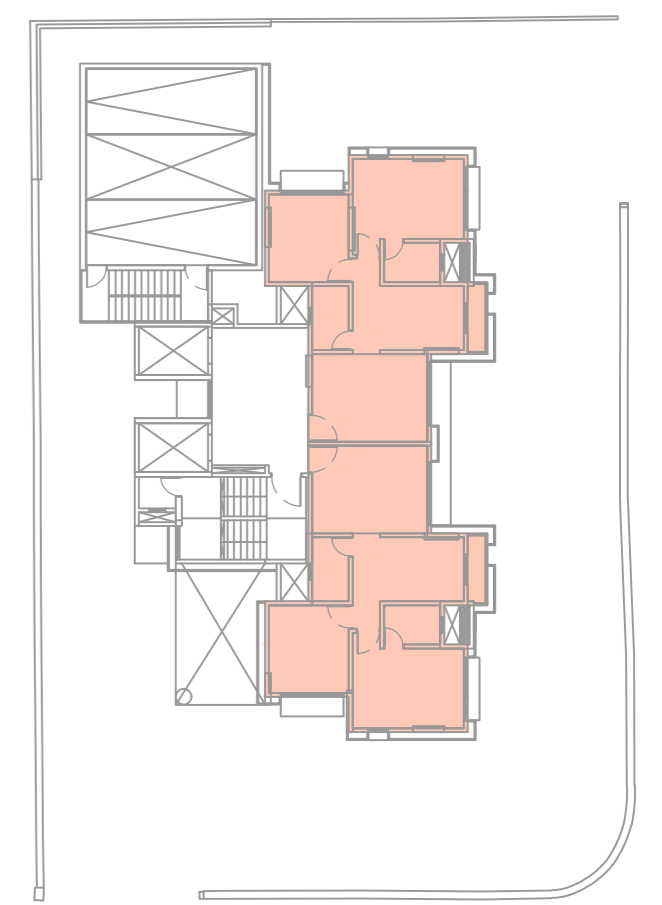
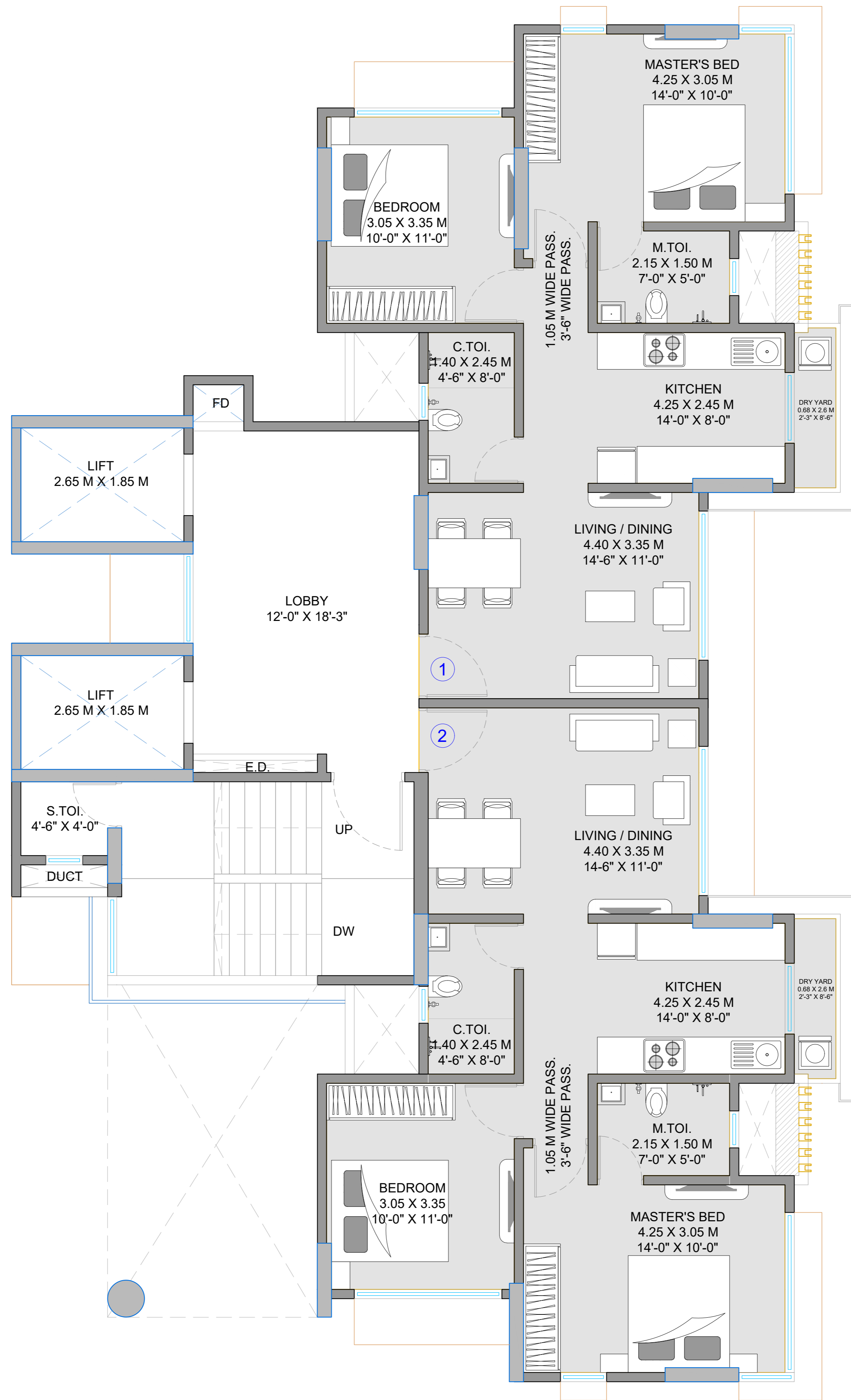


# 3RD FLOOR PLAN

ADVENT NEEL BY REGENT ASSOCIATES



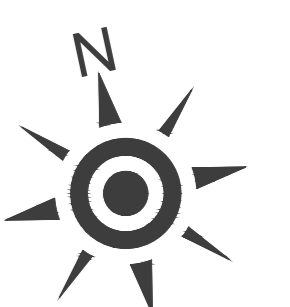
PENTASPACE  
CONSULTANTS PVT LTD



KEY PLAN

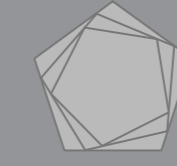
Disclaimer: The plans, designs, and dimensions are as per current sanctioned plans and approvals. Specifications, amenities, and facilities will be as set out in the agreement for sale as uploaded on the RERA website (<https://maharera.mahaonline.gov.in>). The same may be subject to modification/change/revision/alteration in terms of approvals, orders, directions and/or regulations of the concerned/relevant authorities, and/or for compliance with laws/regulations in force from time to time and/or in line with our customer policies. We may modify/alter the above by following due procedure as prescribed under the Real Estate (Regulation and Development) Act, 2017, ("RERA") read with the provisions of the Maharashtra Real Estate (Regulation and Development) Act, 2017, ("RERA") read with the provisions of the Maharashtra Real Estate (Regulation and Development) Act, 2017 and the Rules and Regulations framed under RERA for Maharashtra ("RERA Rules").

NO.	TYPE	RERA CARPET AREA		MOFA C.AREA
1	2BHK	663.33 SQ FT	61.62 SQ MTS.	634.98 SQ FT
2	2BHK	663.33 SQ FT	61.62 SQ MTS.	637.02 SQ FT

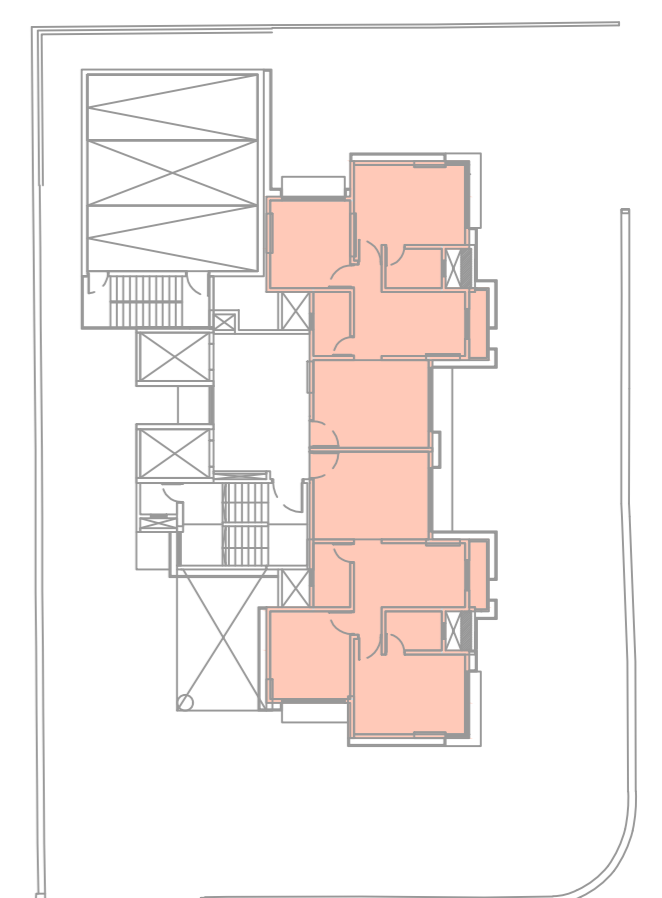
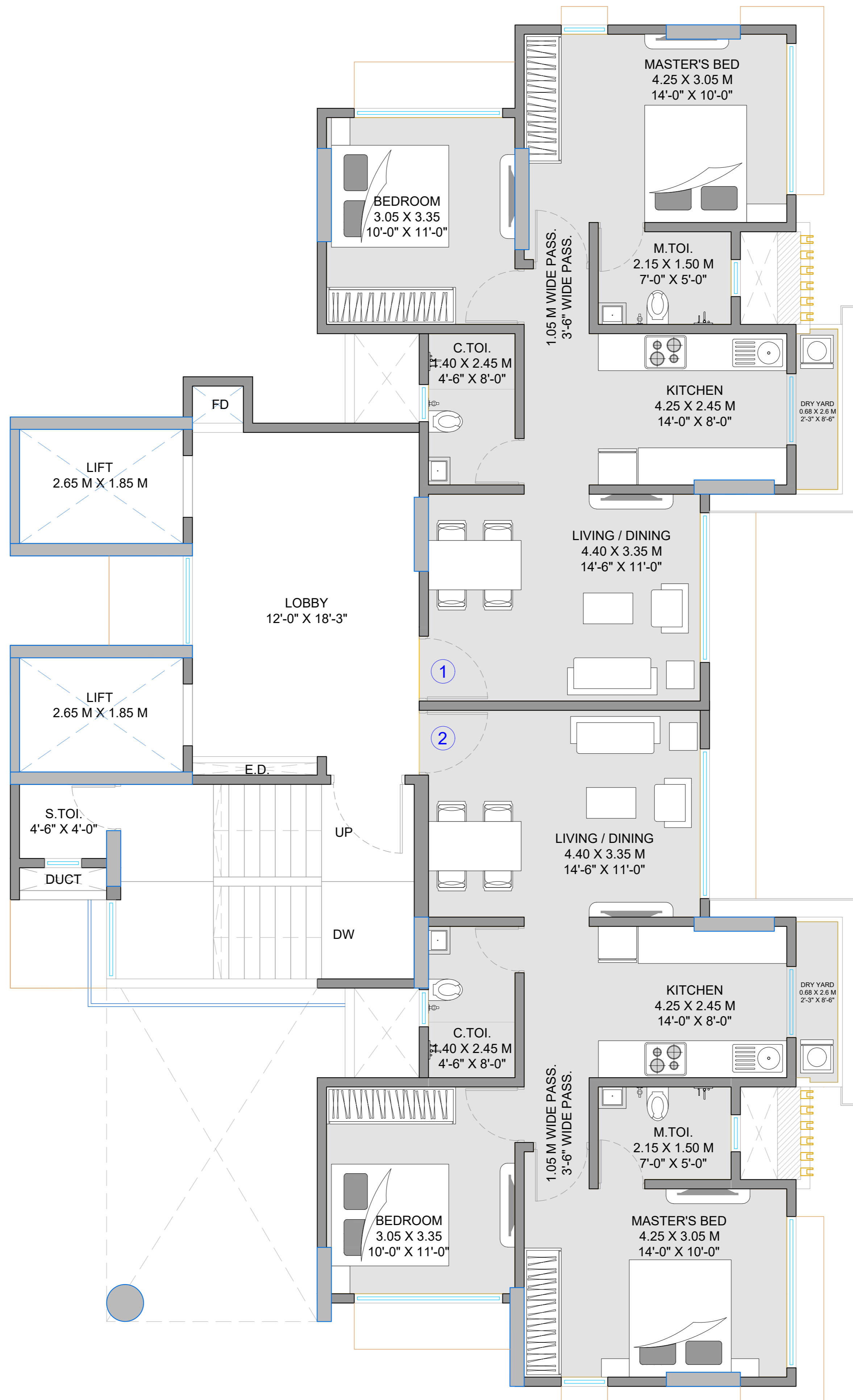


# 4TH FLOOR PLAN

ADVENT NEEL BY REGENT ASSOCIATES



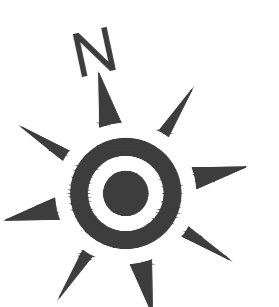
PENTASPACE  
CONSULTANTS PVT LTD



KEY PLAN

Disclaimer: The plans, designs, and dimensions are as per current sanctioned plans and approvals. Specifications, amenities, and facilities will be as set out in the agreement for sale as uploaded on the RERA website (<https://maharera.mahaonline.gov.in>). The same may be subject to modification/change/revision/alteration in terms of approvals, orders, directions and/or regulations of the concerned/relevant authorities, and/or for compliance with laws/regulations in force from time to time and/or in line with our customer policies. We may modify/alter the above by following due procedure as prescribed under the Real Estate (Regulation and Development) Act, 2017, ("RERA") read with the provisions of the Maharashtra Real Estate (Regulation and Development) Act, 2017, ("RERA") read with the provisions of the Maharashtra Real Estate (Regulation and Development) Act, 2017 and the Rules and Regulations framed under RERA for Maharashtra ("RERA Rules").

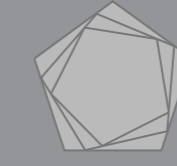
NO.	TYPE	RERA CARPET AREA		MOFA C.AREA
1	2BHK	663.33 SQ FT	61.62 SQ MTS.	634.98 SQ FT
2	2BHK	663.33 SQ FT	61.62 SQ MTS.	637.02 SQ FT



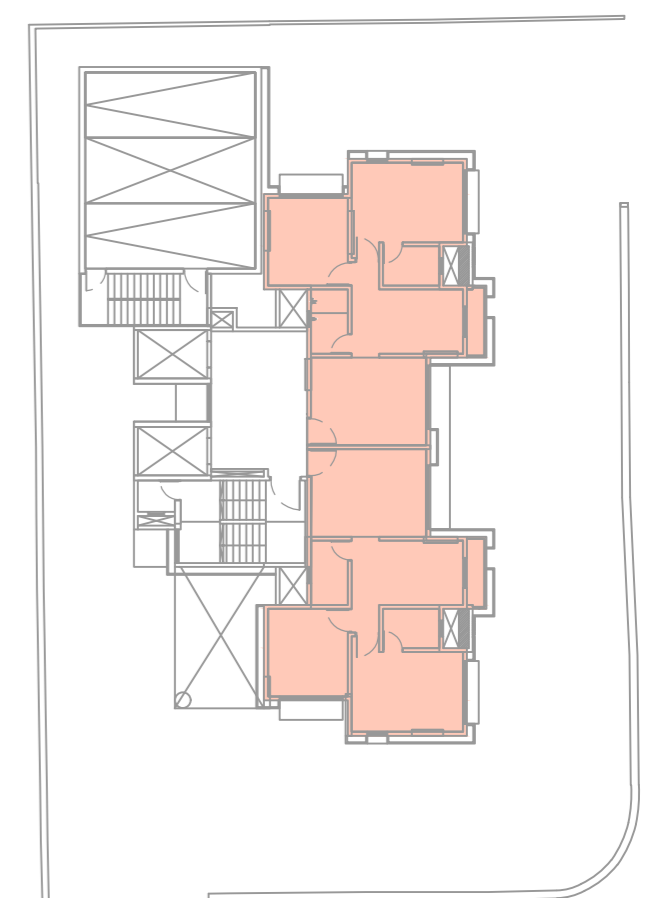
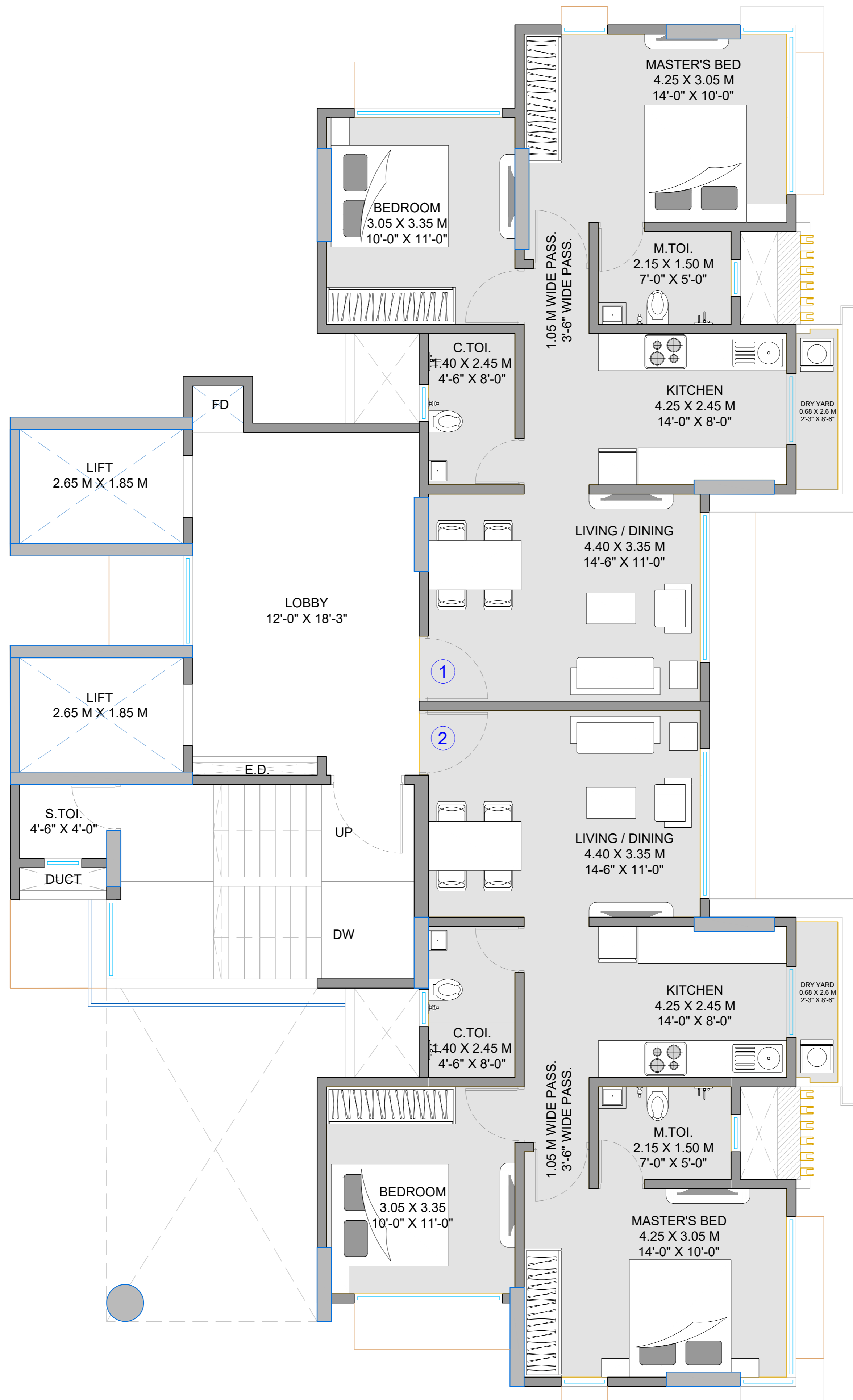


# 5TH FLOOR PLAN

ADVENT NEEL BY REGENT ASSOCIATES



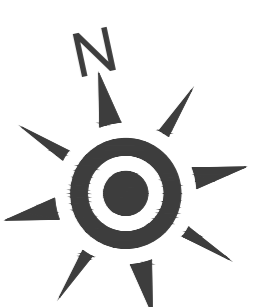
PENTASPACE  
CONSULTANTS PVT LTD



KEY PLAN

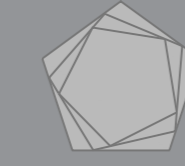
Disclaimer: The plans, designs, and dimensions are as per current sanctioned plans and approvals. Specifications, amenities, and facilities will be as set out in the agreement for sale as uploaded on the RERA website (<https://maharera.mahaonline.gov.in>). The same may be subject to modification/change/revision/alteration in terms of approvals, orders, directions and/or regulations of the concerned/relevant authorities, and/or for compliance with laws/regulations in force from time to time and/or in line with our customer policies. We may modify/alter the above by following due procedure as prescribed under the Real Estate (Regulation and Development) Act, 2017, ("RERA") read with the provisions of the Maharashtra Real Estate (Regulation and Development) Act, 2017, ("RERA") read with the provisions of the Maharashtra Real Estate (Regulation and Development) Act, 2017 and the Rules and Regulations framed under RERA for Maharashtra ("RERA Rules").

NO.	TYPE	RERA CARPET AREA		MOFA C.AREA
1	2BHK	663.33 SQ FT	61.62 SQ MTS.	634.98 SQ FT
2	2BHK	663.33 SQ FT	61.62 SQ MTS.	637.02 SQ FT

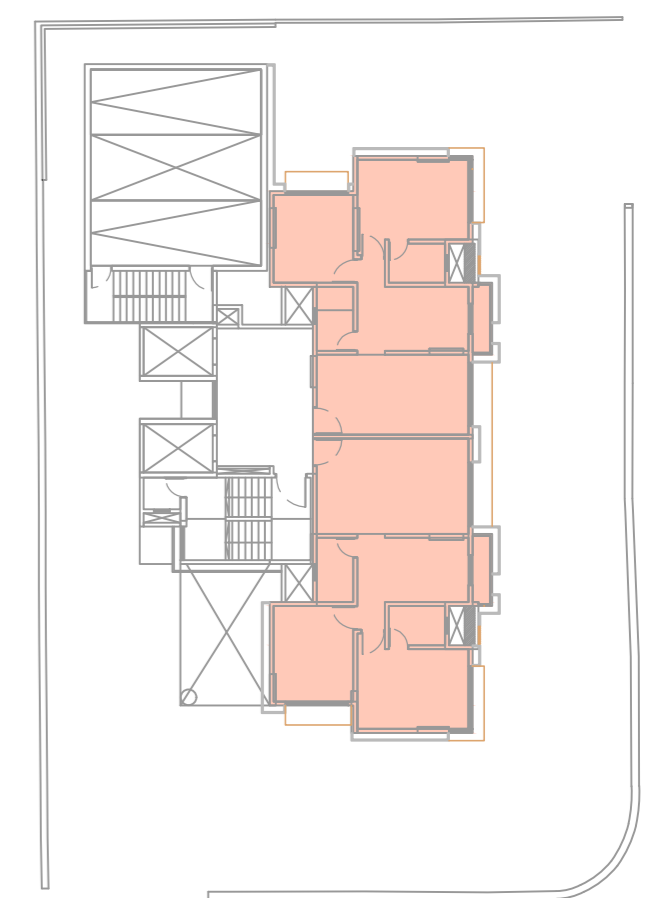
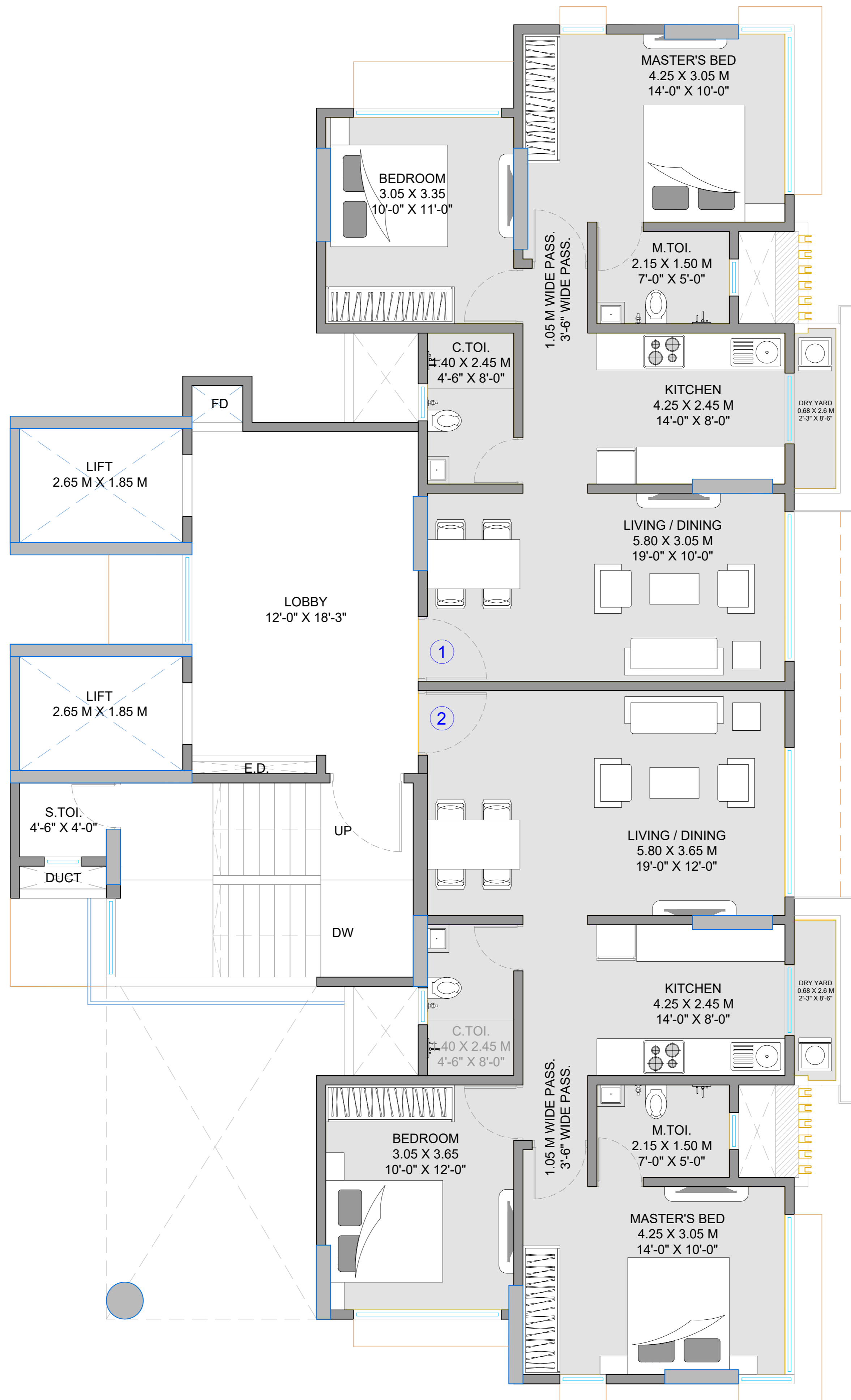


# 6TH FLOOR PLAN

ADVENT NEEL BY REGENT ASSOCIATES



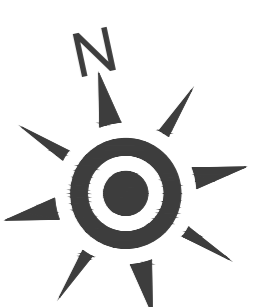
PENTASPACE  
CONSULTANTS PVT LTD



KEY PLAN

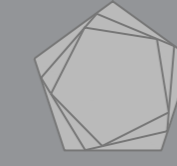
Disclaimer: The plans, designs, and dimensions are as per current sanctioned plans and approvals. Specifications, amenities, and facilities will be as set out in the agreement for sale as uploaded on the RERA website (<https://maharera.mahaonline.gov.in>). The same may be subject to modification/change/revision/alteration in terms of approvals, orders, directions and/or regulations of the concerned/relevant authorities, and/or for compliance with laws/regulations in force from time to time and/or in line with our customer policies. We may modify/alter the above by following due procedure as prescribed under the Real Estate (Regulation and Development) Act, 2017, ("RERA") read with the provisions of the Maharashtra Real Estate (Regulation and Development) Act, 2017, ("RERA") read with the provisions of the Maharashtra Real Estate (Regulation and Development) Act, 2017 and the Rules and Regulations framed under RERA for Maharashtra ("RERA Rules").

NO.	TYPE	RERA CARPET AREA		MOFA C.AREA
1	2BHK	697.30 SQ FT	64.78 SQ MTS.	666.74 SQ FT
2	2BHK	745.10 SQ FT	69.22 SQ MTS.	715.50 SQ FT

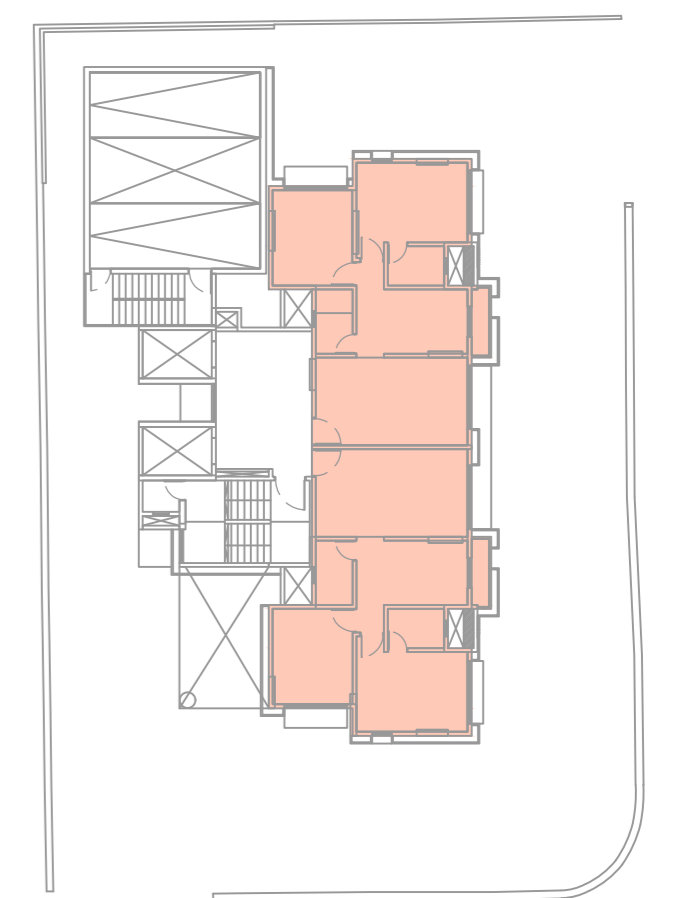
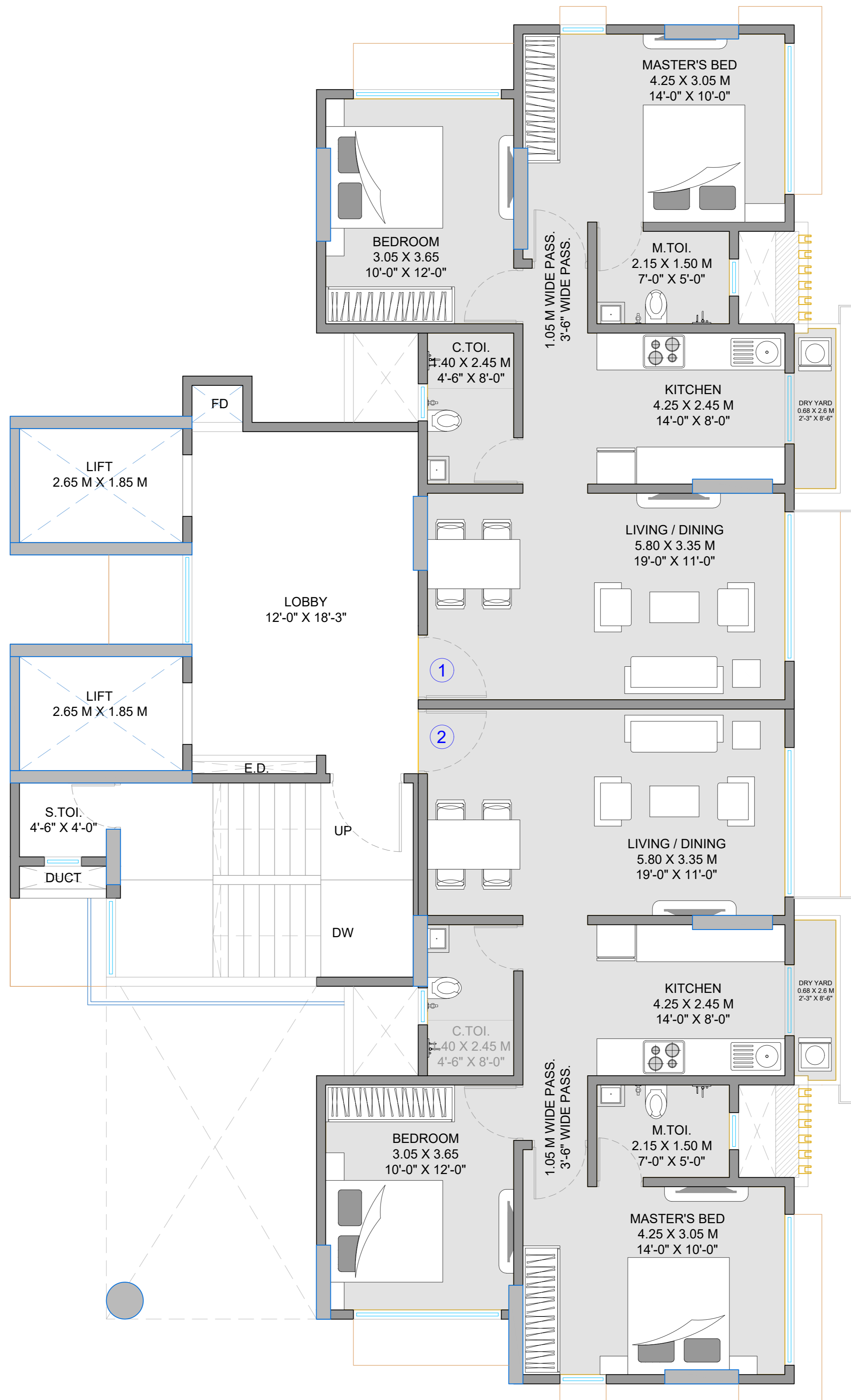


# 7TH FLOOR PLAN

ADVENT NEEL BY REGENT ASSOCIATES



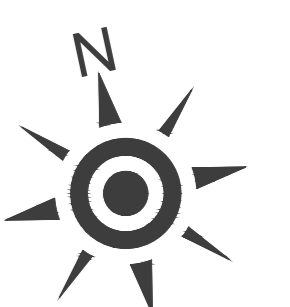
PENTASPACE  
CONSULTANTS PVT LTD



KEY PLAN

Disclaimer: The plans, designs, and dimensions are as per current sanctioned plans and approvals. Specifications, amenities, and facilities will be as set out in the agreement for sale as uploaded on the RERA website (<https://maharera.mahaonline.gov.in>). The same may be subject to modification/change/revision/alteration in terms of approvals, orders, directions and/or regulations of the concerned/relevant authorities, and/or for compliance with laws/regulations in force from time to time and/or in line with our customer policies. We may modify/alter the above by following due procedure as prescribed under the Real Estate (Regulation and Development) Act, 2017, ("RERA") read with the provisions of the Maharashtra Real Estate (Regulation and Development) Act, 2017, ("RERA") read with the provisions of the Maharashtra Real Estate (Regulation and Development) Act, 2017 and the Rules and Regulations framed under RERA for Maharashtra ("RERA Rules").

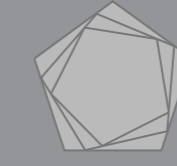
NO.	TYPE	RERA CARPET AREA		MOFA C.AREA
1	2BHK	726.36 SQ FT	67.48 SQ MTS.	695.32 SQ FT
2	2BHK	726.36 SQ FT	67.48 SQ MTS.	696.77 SQ FT



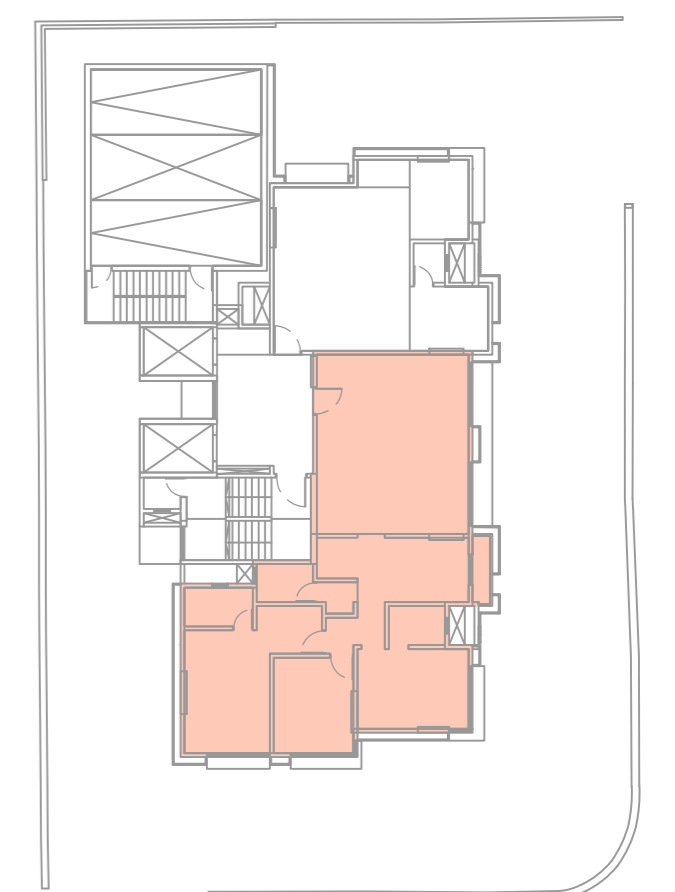
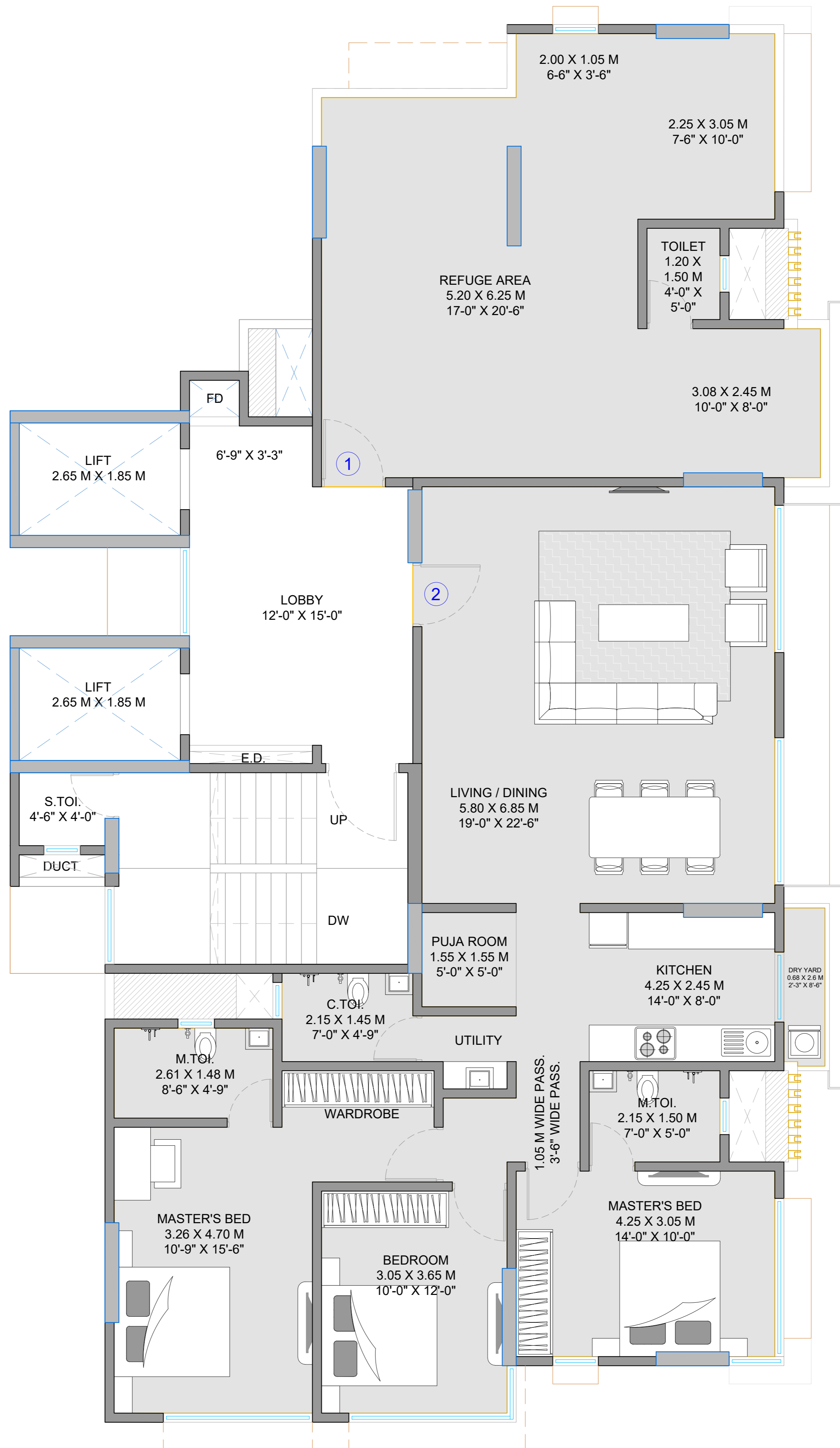


# 8TH FLOOR PLAN

ADVENT NEEL BY REGENT ASSOCIATES



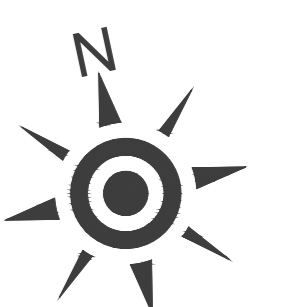
PENTASPACE  
CONSULTANTS PVT LTD



KEY PLAN

Disclaimer: The plans, designs, and dimensions are as per current sanctioned plans and approvals. Specifications, amenities, and facilities will be as set out in the agreement for sale as uploaded on the RERA website (<https://maharera.mahaonline.gov.in>). The same may be subject to modification/change/revision/alteration in terms of approvals, orders, directions and/or regulations of the concerned/relevant authorities, and/or for compliance with laws/regulations in force from time to time and/or in line with our customer policies. We may modify/alter the above by following due procedure as prescribed under the Real Estate (Regulation and Development) Act, 2017, ("RERA") read with the provisions of the Maharashtra Real Estate (Regulation and Development) Act, 2017, ("RERA") read with the provisions of the Maharashtra Real Estate (Regulation and Development) Act, 2017 and the Rules and Regulations framed under RERA for Maharashtra ("RERA Rules").

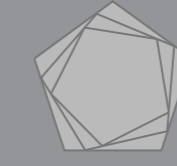
NO.	TYPE	RERA CARPET AREA	MOFA C.AREA
1	REFUGE		
2	3BHK	1278.68 SQ FT	1178.79 SQ MTS.
			1224.65 SQ FT



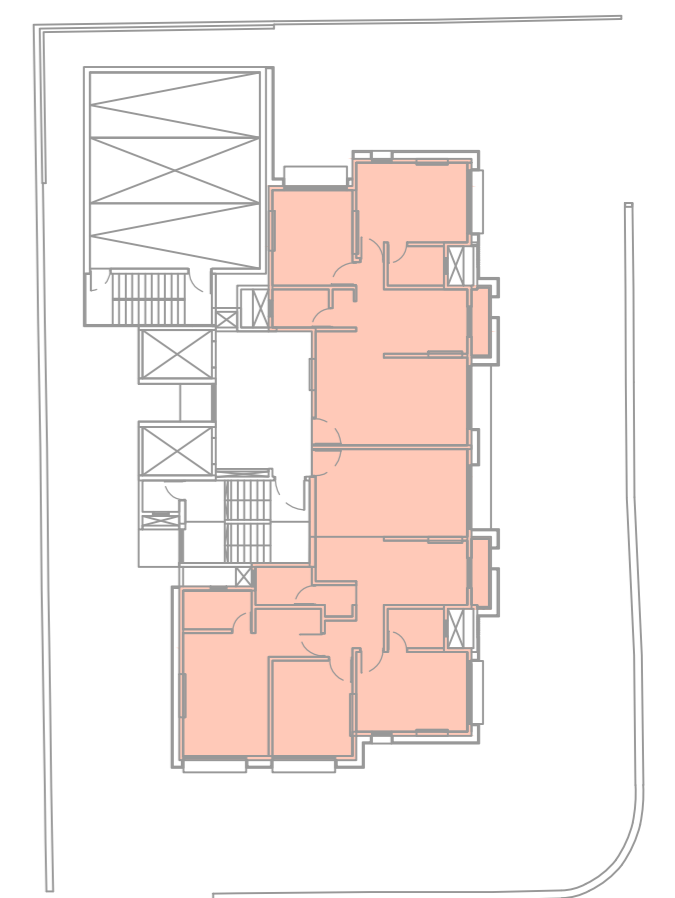
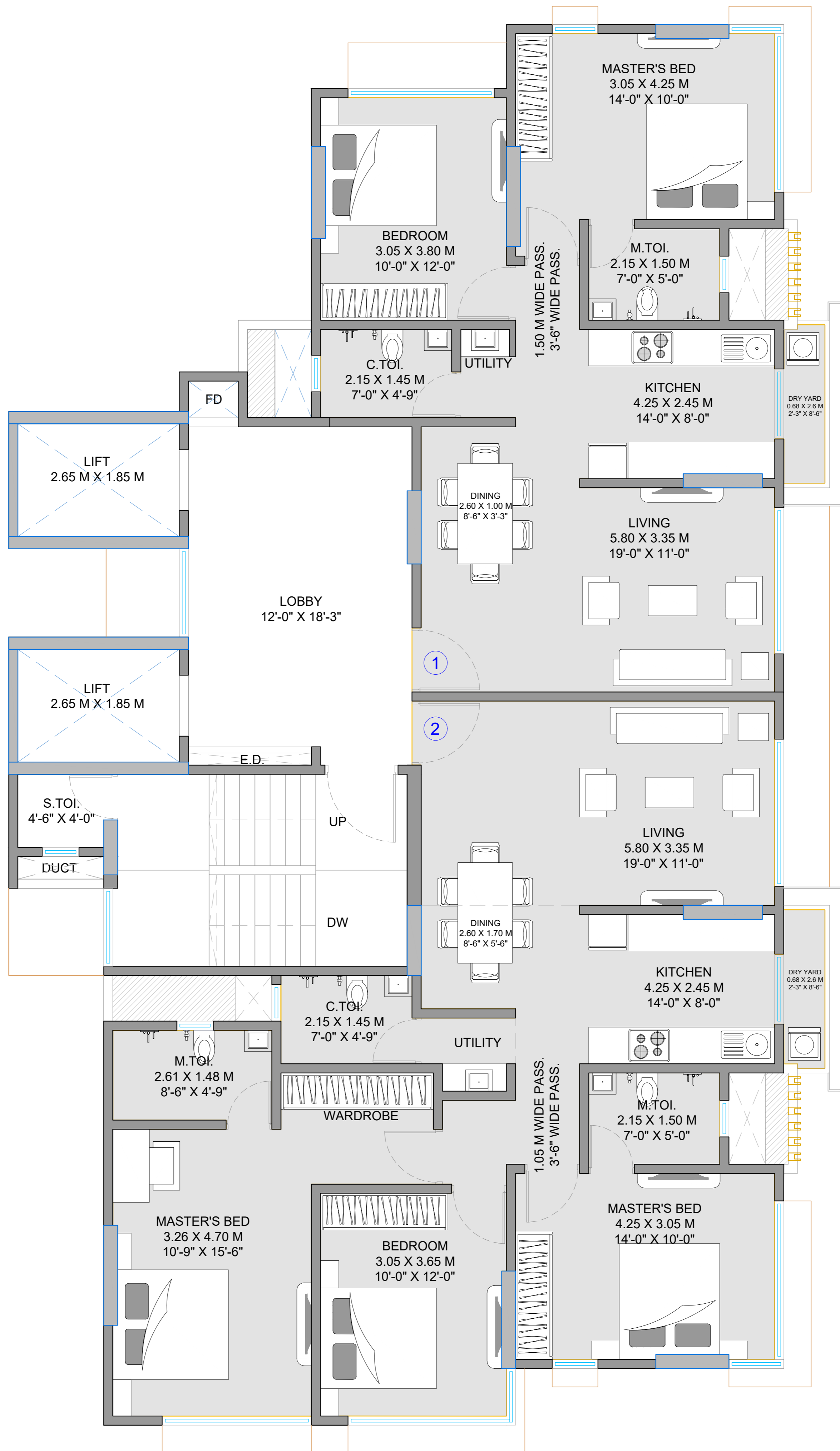


# 9TH FLOOR PLAN

ADVENT NEEL BY REGENT ASSOCIATES



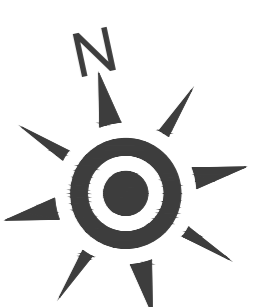
PENTASPACE  
CONSULTANTS PVT LTD



KEY PLAN

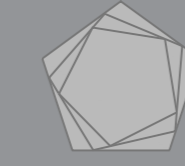
Disclaimer: The plans, designs, and dimensions are as per current sanctioned plans and approvals. Specifications, amenities, and facilities will be as set out in the agreement for sale as uploaded on the RERA website (<https://maharera.mahaonline.gov.in>). The same may be subject to modification/change/revision/alteration in terms of approvals, orders, directions and/or regulations of the concerned/relevant authorities, and/or for compliance with laws/regulations in force from time to time and/or in line with our customer policies. We may modify/alter the above by following due procedure as prescribed under the Real Estate (Regulation and Development) Act, 2017, ("RERA") read with the provisions of the Maharashtra Real Estate (Regulation and Development) Act, 2017, ("RERA") read with the provisions of the Maharashtra Real Estate (Regulation and Development) Act, 2017 and the Rules and Regulations framed under RERA for Maharashtra ("RERA Rules").

NO.	TYPE	RERA CARPET AREA		MOFA C.AREA
1	2BHK	754.85 SQ FT	70.12 SQ MTS.	743.70 SQ FT
2	3BHK	1060.17 SQ FT	98.49 SQ MTS.	1008.63 SQ FT

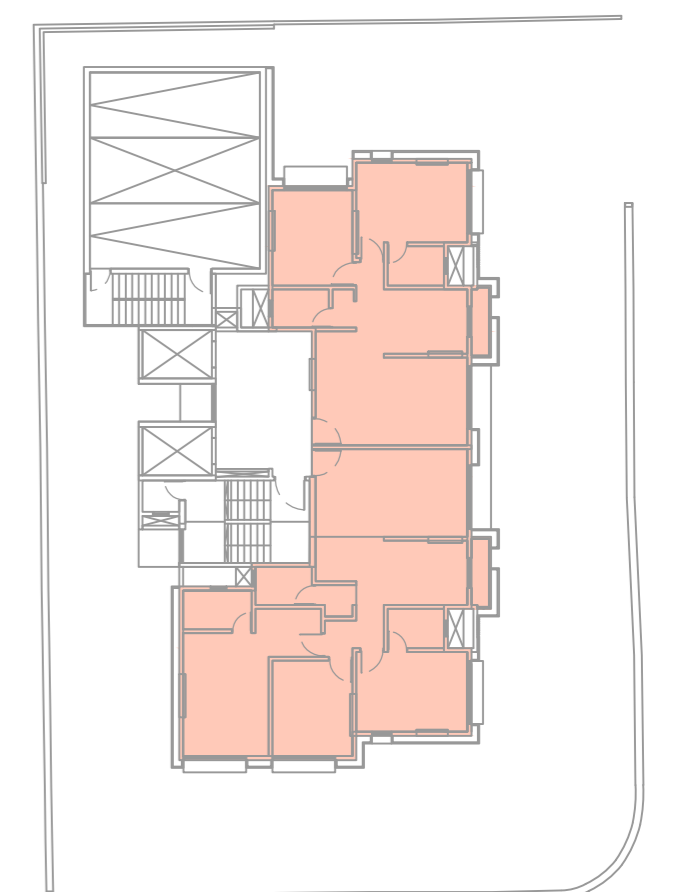
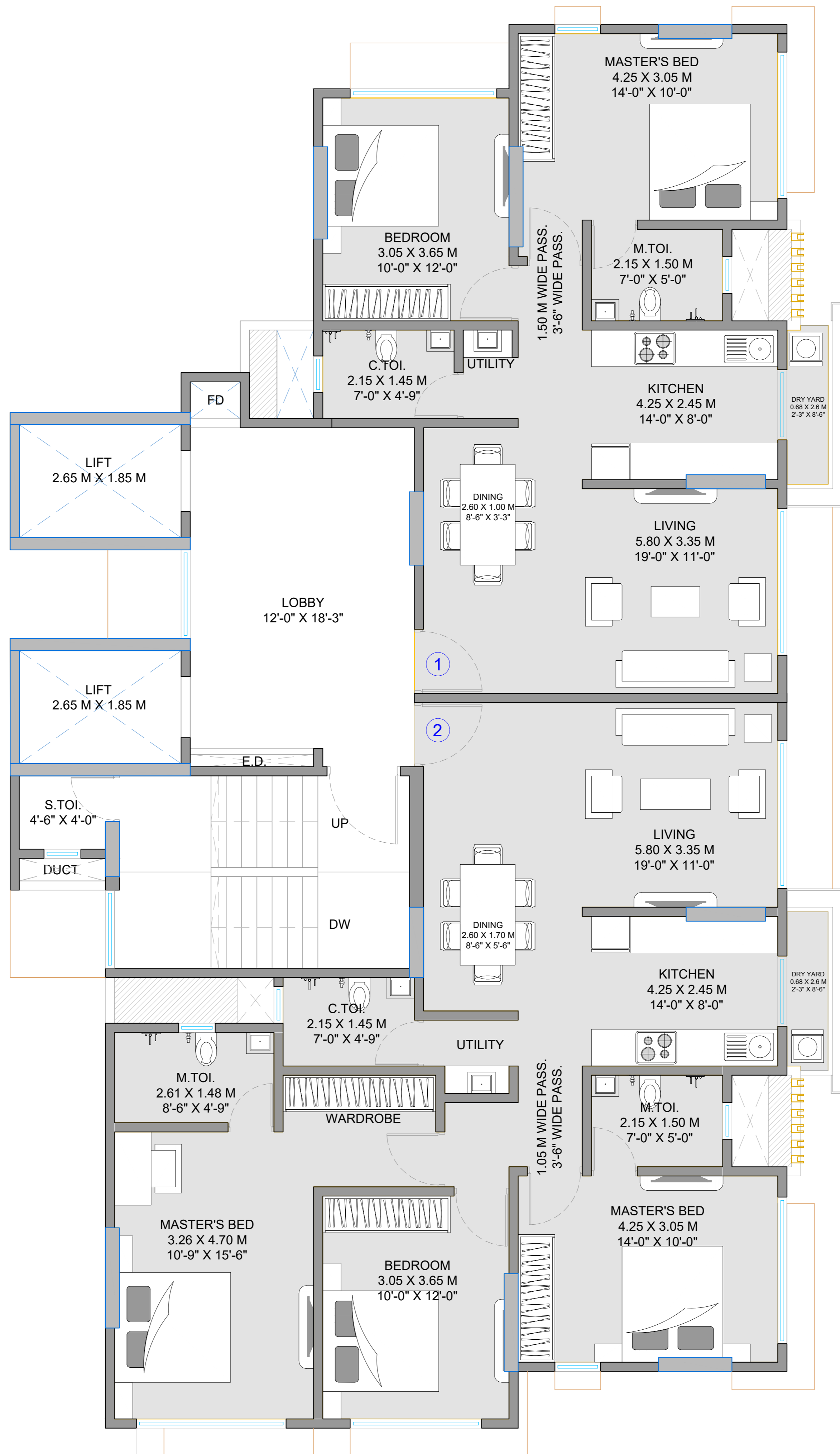


# 10TH AND 13TH FLOOR PLAN

ADVENT NEEL BY REGENT ASSOCIATES



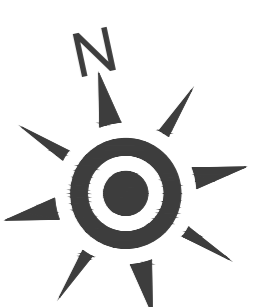
PENTASPACE  
CONSULTANTS PVT LTD



KEY PLAN

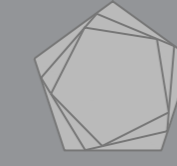
Disclaimer: The plans, designs, and dimensions are as per current sanctioned plans and approvals. Specifications, amenities, and facilities will be as set out in the agreement for sale as uploaded on the RERA website (<https://maharera.mahaonline.gov.in>). The same may be subject to modification/change/revision/alteration in terms of approvals, orders, directions and/or regulations of the concerned/relevant authorities, and/or for compliance with laws/regulations in force from time to time and/or in line with our customer policies. We may modify/alter the above by following due procedure as prescribed under the Real Estate (Regulation and Development) Act, 2017, ("RERA") read with the provisions of the Maharashtra Real Estate (Regulation and Development) Act, 2017, ("RERA") read with the provisions of the Maharashtra Real Estate (Regulation and Development) Act, 2017 and the Rules and Regulations framed under RERA for Maharashtra ("RERA Rules").

NO.	TYPE	RERA CARPET AREA		MOFA C.AREA
1	2BHK	754.85 SQ FT	70.12 SQ MTS.	743.70 SQ FT
2	3BHK	1060.17 SQ FT	98.49 SQ MTS.	1008.63 SQ FT

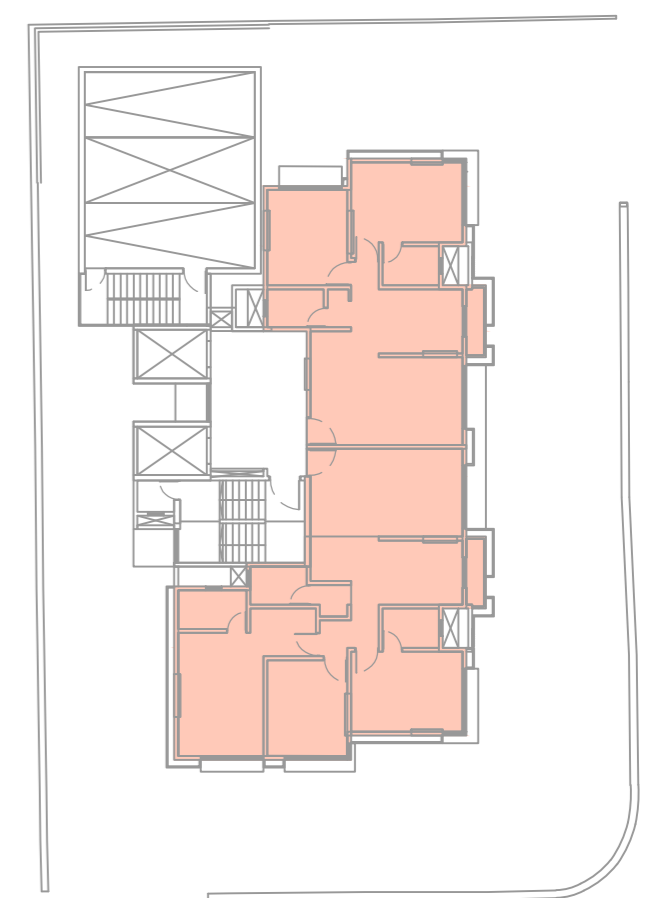
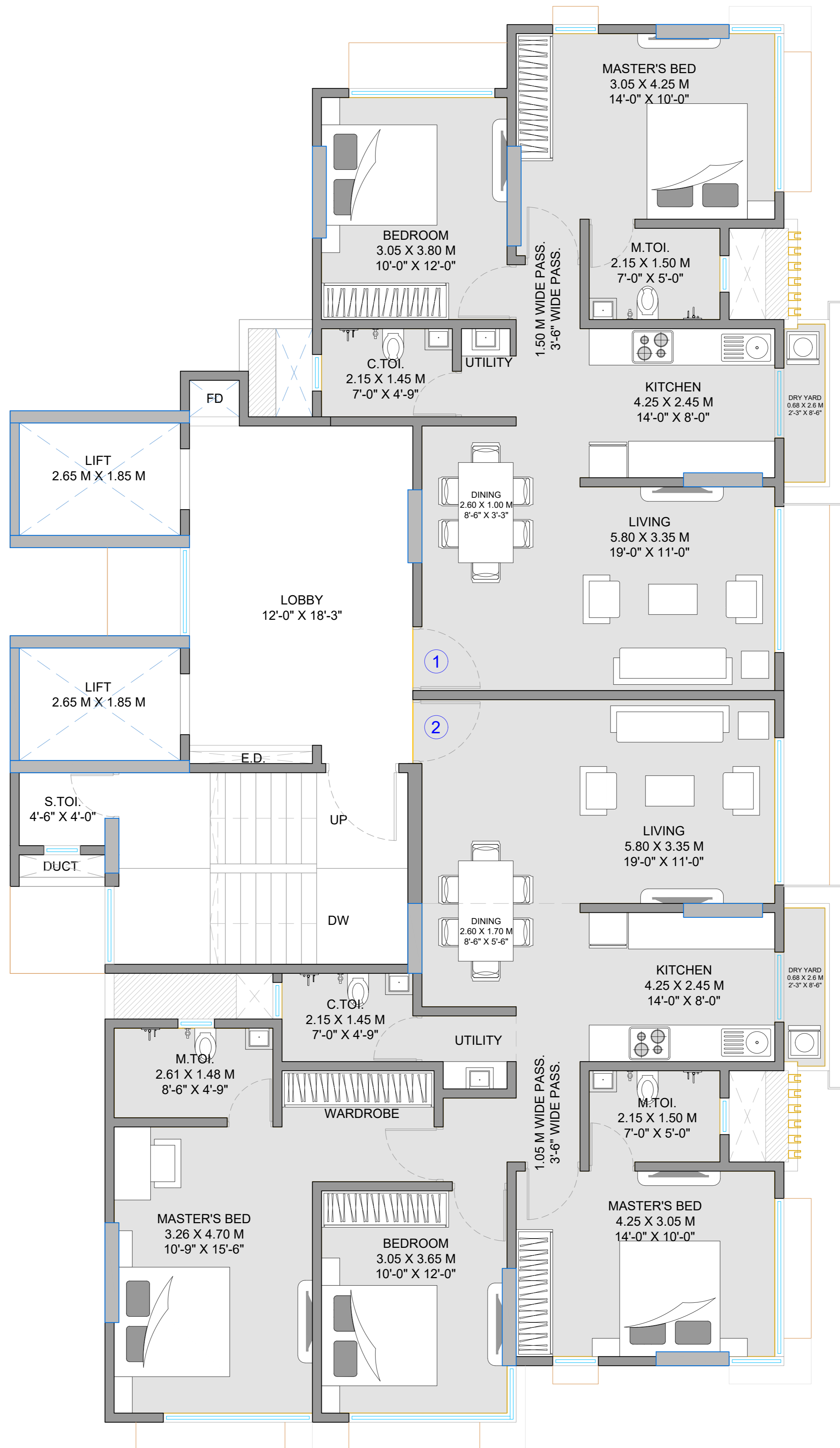


# 11TH FLOOR PLAN

ADVENT NEEL BY REGENT ASSOCIATES



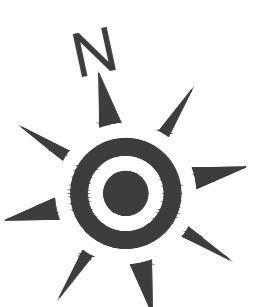
PENTASPACE  
CONSULTANTS PVT LTD



KEY PLAN

Disclaimer: The plans, designs, and dimensions are as per current sanctioned plans and approvals. Specifications, amenities, and facilities will be as set out in the agreement for sale as uploaded on the RERA website (<https://maharera.mahaonline.gov.in>). The same may be subject to modification/change/revision/alteration in terms of approvals, orders, directions and/or regulations of the concerned/relevant authorities, and/or for compliance with laws/regulations in force from time to time and/or in line with our customer policies. We may modify/alter the above by following due procedure as prescribed under the Real Estate (Regulation and Development) Act, 2017, ("RERA") read with the provisions of the Maharashtra Real Estate (Regulation and Development) Act, 2017, ("RERA") read with the provisions of the Maharashtra Real Estate (Regulation and Development) Act, 2017 and the Rules and Regulations framed under RERA for Maharashtra ("RERA Rules").

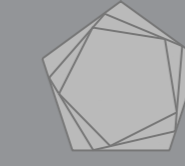
NO.	TYPE	RERA CARPET AREA		MOFA C.AREA
1	2BHK	754.85 SQ FT	70.12 SQ MTS.	743.70 SQ FT
2	3BHK	1060.17 SQ FT	98.49 SQ MTS.	1008.63 SQ FT



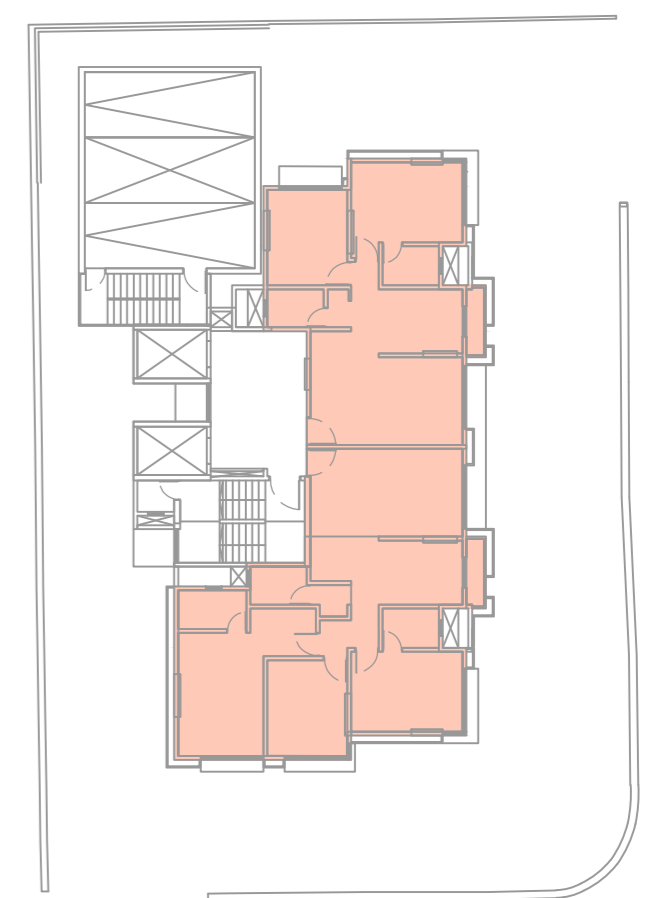
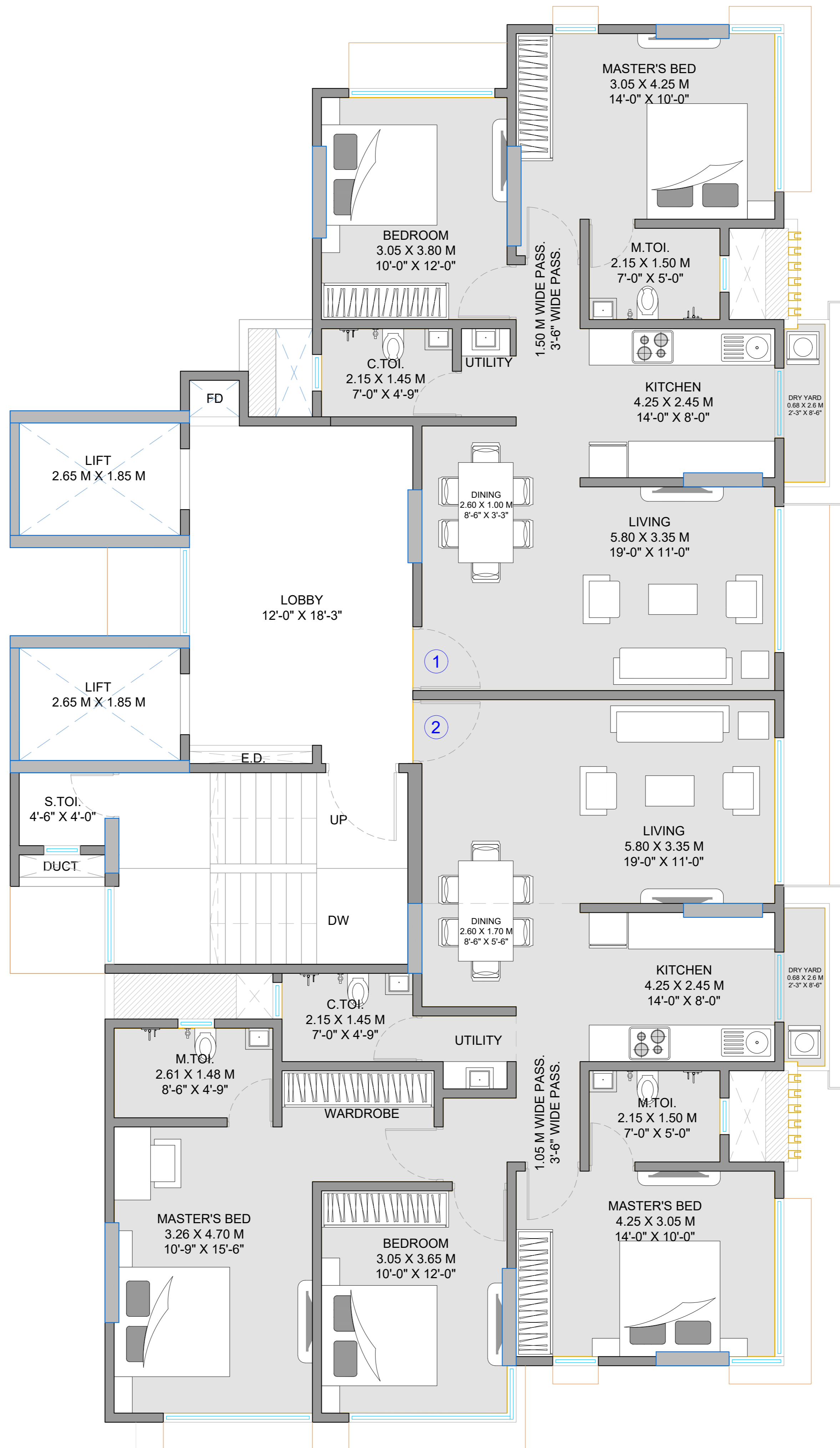


# 12TH FLOOR PLAN

ADVENT NEEL BY REGENT ASSOCIATES



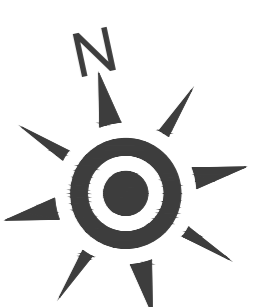
PENTASPACE  
CONSULTANTS PVT LTD



KEY PLAN

Disclaimer: The plans, designs, and dimensions are as per current sanctioned plans and approvals. Specifications, amenities, and facilities will be as set out in the agreement for sale as uploaded on the RERA website (<https://maharera.mahaonline.gov.in>). The same may be subject to modification/change/revision/alteration in terms of approvals, orders, directions and/or regulations of the concerned/relevant authorities, and/or for compliance with laws/regulations in force from time to time and/or in line with our customer policies. We may modify/alter the above by following due procedure as prescribed under the Real Estate (Regulation and Development) Act, 2017, ("RERA") read with the provisions of the Maharashtra Real Estate (Regulation and Development) Act, 2017, ("RERA") read with the provisions of the Maharashtra Real Estate (Regulation and Development) Act, 2017 and the Rules and Regulations framed under RERA for Maharashtra ("RERA Rules").

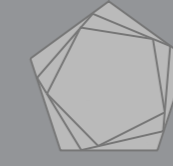
NO.	TYPE	RERA CARPET AREA		MOFA C.AREA
1	2BHK	754.85 SQ FT	70.12 SQ MTS.	743.70 SQ FT
2	3BHK	1060.17 SQ FT	98.49 SQ MTS.	1008.63 SQ FT



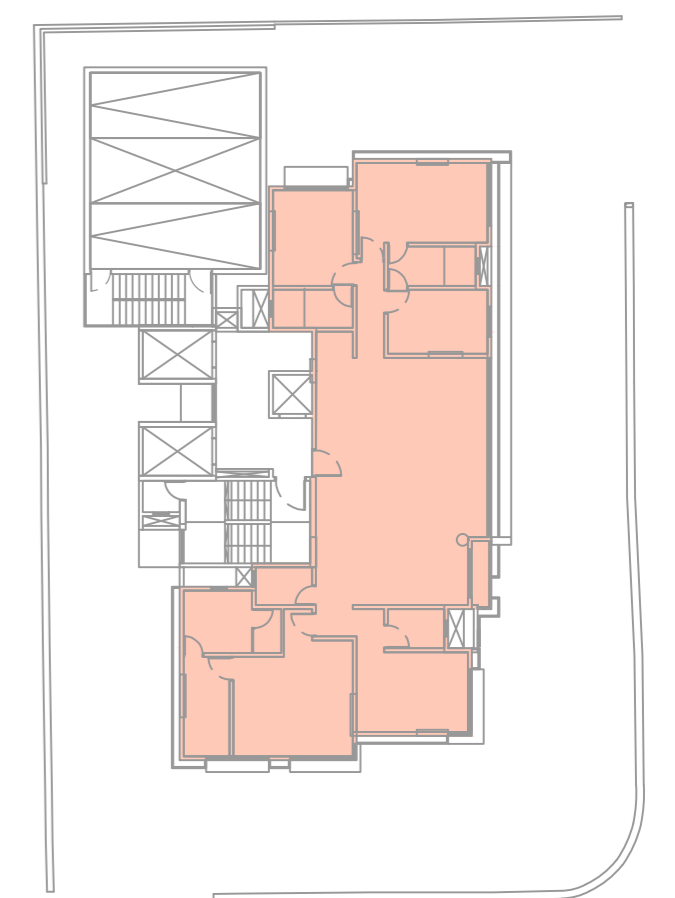
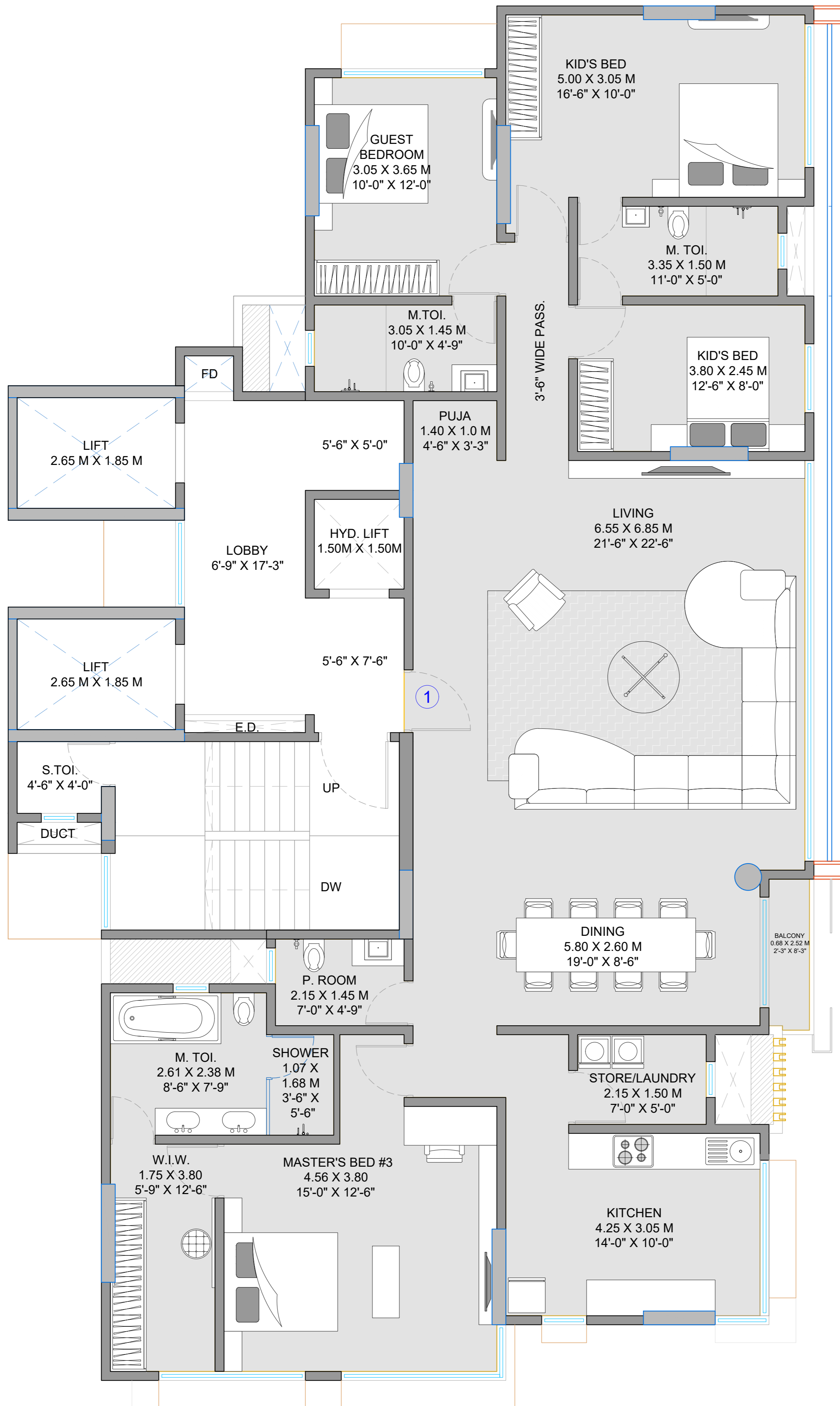


# 14TH FLOOR PLAN

ADVENT NEEL BY REGENT ASSOCIATES



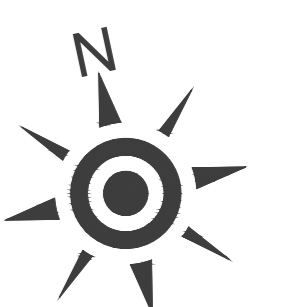
PENTASPACE  
CONSULTANTS PVT LTD



KEY PLAN

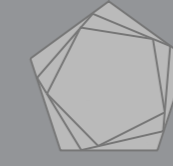
Disclaimer: The plans, designs, and dimensions are as per current sanctioned plans and approvals. Specifications, amenities, and facilities will be as set out in the agreement for sale as uploaded on the RERA website (<https://maharera.mahaonline.gov.in>). The same may be subject to modification/change/revision/alteration in terms of approvals, orders, directions and/or regulations of the concerned/relevant authorities, and/or for compliance with laws/regulations in force from time to time and/or in line with our customer policies. We may modify/alter the above by following due procedure as prescribed under the Real Estate (Regulation and Development) Act, 2017, ("RERA") read with the provisions of the Maharashtra Real Estate (Regulation and Development) Act, 2017, ("RERA") read with the provisions of the Maharashtra Real Estate (Regulation and Development) Act, 2017 and the Rules and Regulations framed under RERA for Maharashtra ("RERA Rules").

NO.	TYPE	RERA CARPET AREA	MOFA C.AREA
1	4BHK	1926.90 SQ FT	1855.10 SQ FT

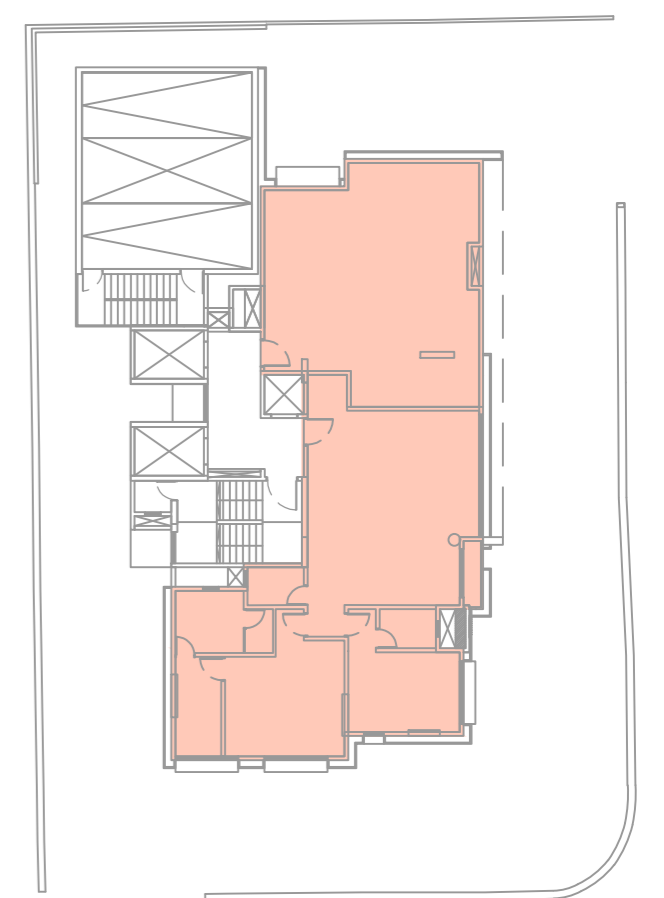
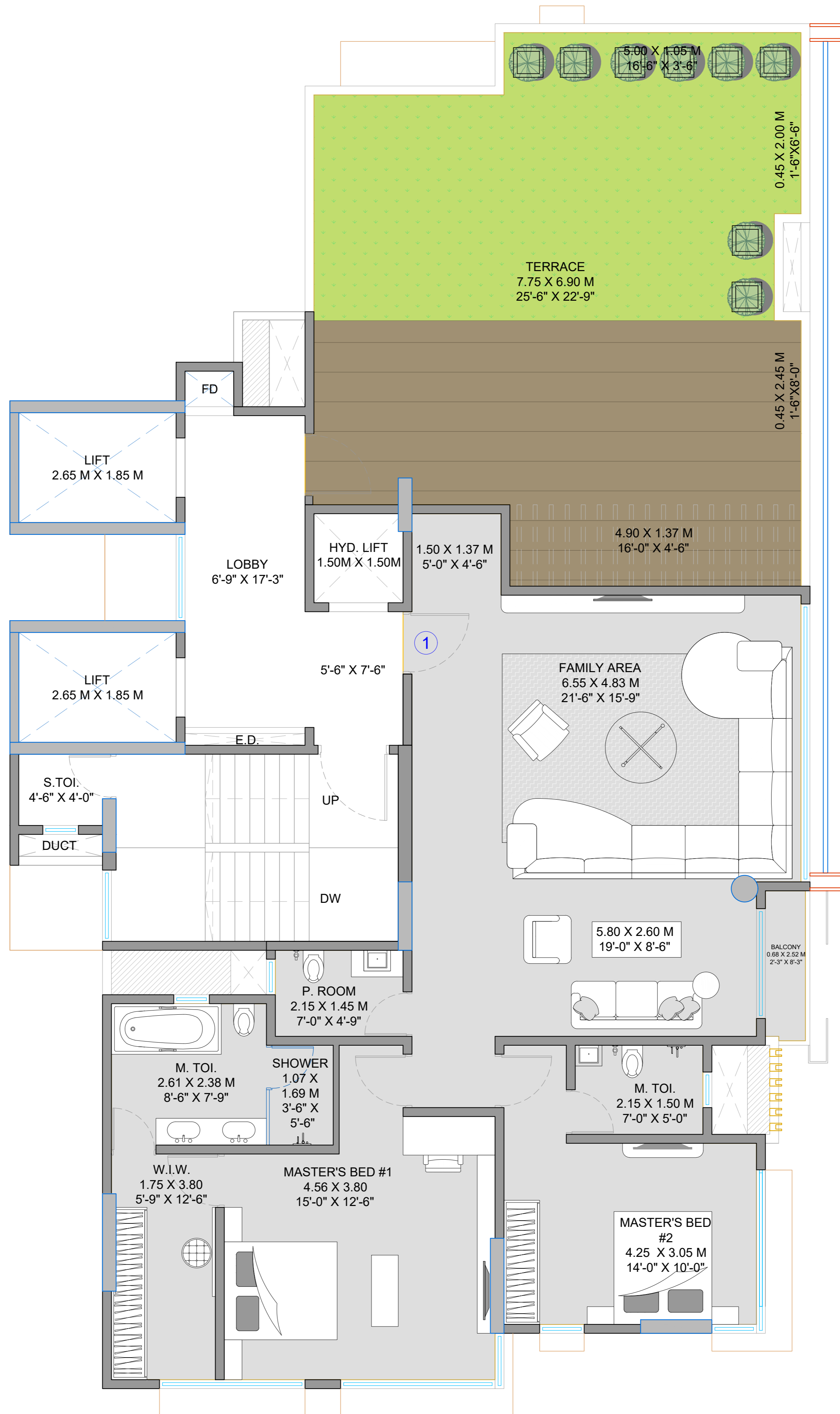


# 15TH FLOOR PLAN

ADVENT NEEL BY REGENT ASSOCIATES



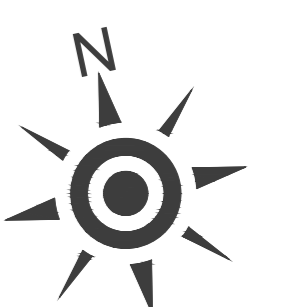
PENTASPACE  
CONSULTANTS PVT LTD



KEY PLAN

Disclaimer: The plans, designs, and dimensions are as per current sanctioned plans and approvals. Specifications, amenities, and facilities will be as set out in the agreement for sale as uploaded on the RERA website (<https://maharera.mahaonline.gov.in>). The same may be subject to modification/change/revision/alteration in terms of approvals, orders, directions and/or regulations of the concerned/relevant authorities, and/or for compliance with laws/regulations in force from time to time and/or in line with our customer policies. We may modify/alter the above by following due procedure as prescribed under the Real Estate (Regulation and Development) Act, 2017, ("RERA") read with the provisions of the Maharashtra Real Estate (Regulation and Development) Act, 2017, ("RERA") read with the provisions of the Maharashtra Real Estate (Regulation and Development) Act, 2017 and the Rules and Regulations framed under RERA for Maharashtra ("RERA Rules").

NO.	TYPE	RERA CARPET AREA	MOFA C.AREA
1	2BHK	1214.20 SQ FT	1177.22 SQ FT
2	TERRACE	730.93 SQ FT	67.90 SQ MTS.

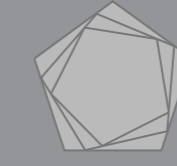




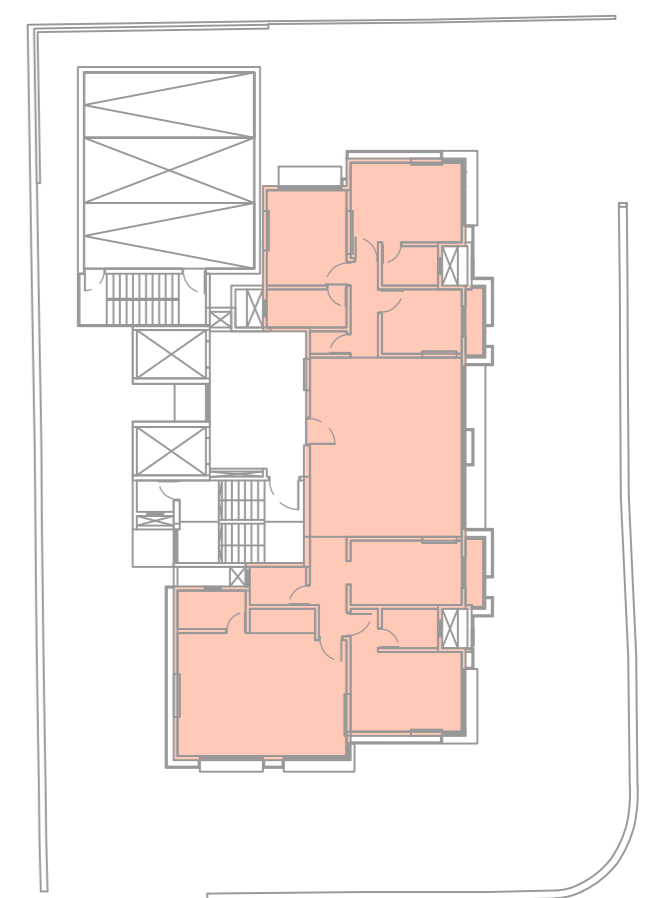
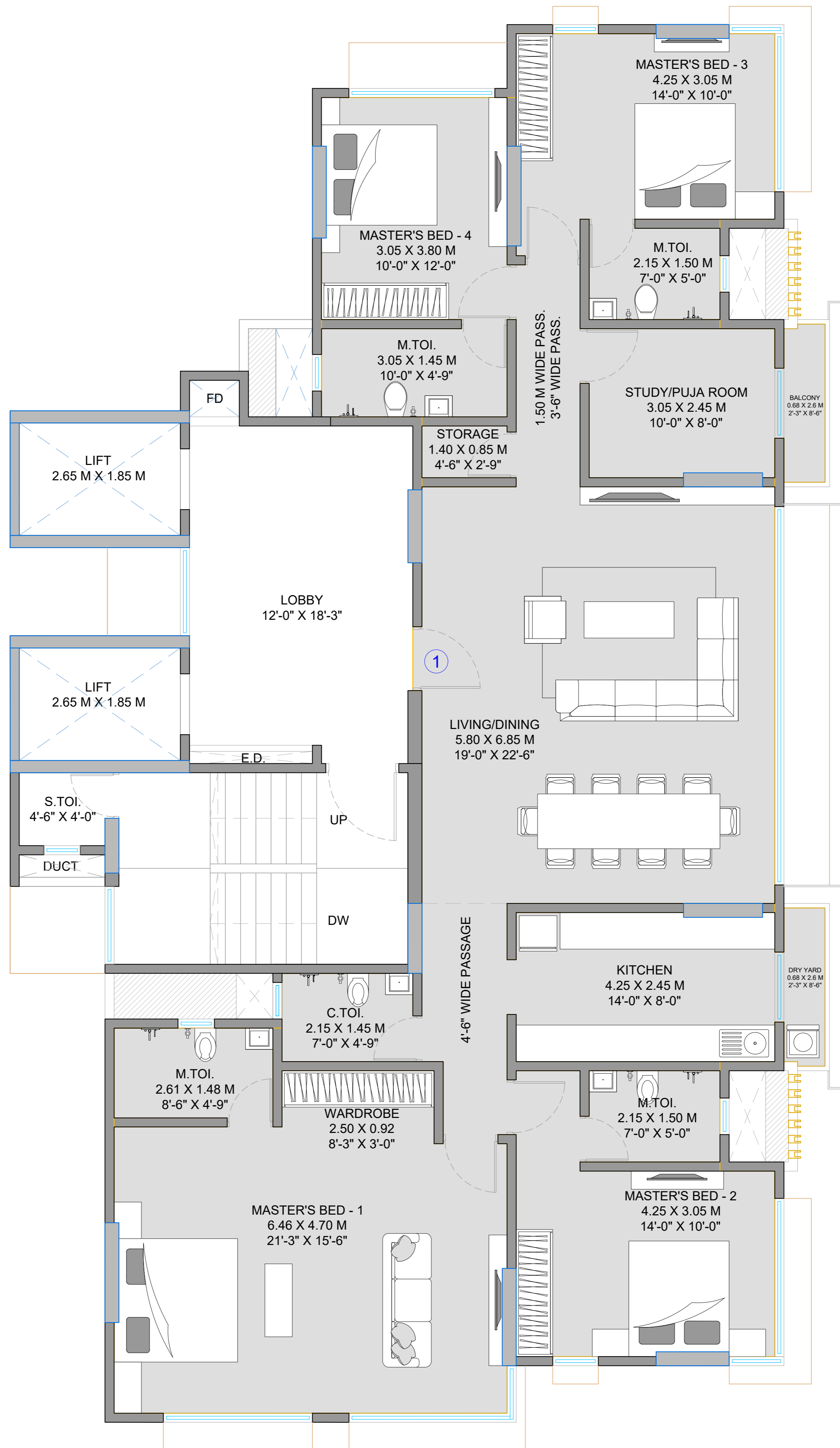


# 3BHK AND 2BHK JODI OPTION

ADVENT NEEL BY REGENT ASSOCIATES



PENTASPACE  
CONSULTANTS PVT LTD



KEY PLAN

Disclaimer: The plans, designs, and dimensions are as per current sanctioned plans and approvals. Specifications, amenities, and facilities will be as set out in the agreement for sale as uploaded on the RERA website (<https://maharera.mahaonline.gov.in>). The same may be subject to modification/change/revision/alteration in terms of approvals, orders, directions and/or regulations of the concerned/relevant authorities, and/or for compliance with laws/regulations in force from time to time and/or in line with our customer policies. We may modify/alter the above by following due procedure as prescribed under the Real Estate (Regulation and Development) Act, 2017, ("RERA") read with the provisions of the Maharashtra Real Estate (Regulation and Development) Act, 2017, ("RERA") read with the provisions of the Maharashtra Real Estate (Regulation and Development) Act, 2017 and the Rules and Regulations framed under RERA for Maharashtra ("RERA Rules").

NO.	TYPE	RERA CARPET AREA	MOFA C.AREA
1	4BHK	1822.70 SQ FT	1,750.66 SQ FT

