



DREAM HOME  
IN MUMBAI  
NOW A REALITY

A Project by



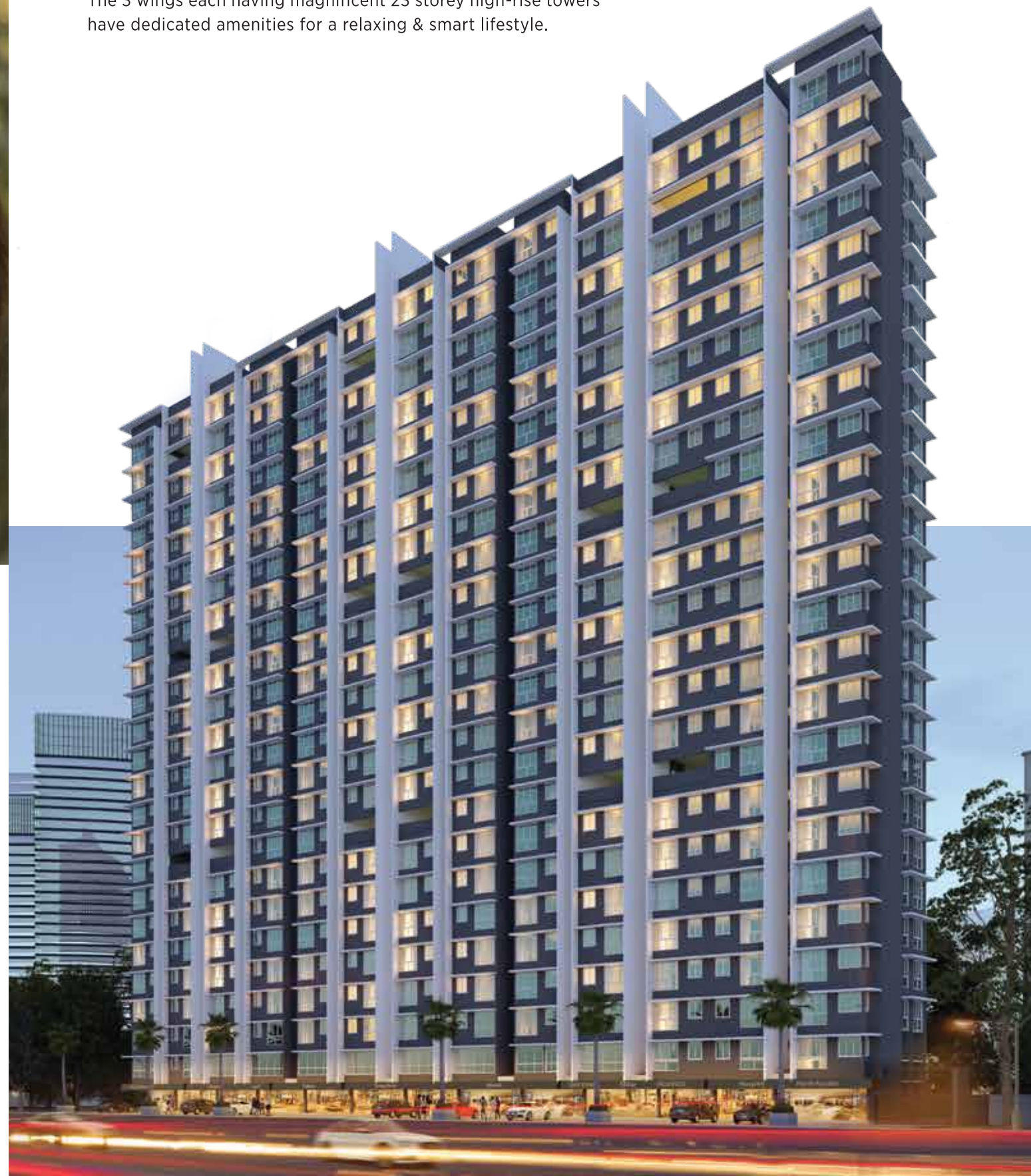


# PATON TOWERS

Now own a house in  
**KANDIVALI**  
At the price of Mira Road.

Paton Towers at Kandivali East, Mumbai, is a majestic grandeur tower. The project offers smart 1 BHK and 2 BHK apartments with beautiful exterior views on all sides.

The 3 wings each having magnificent 23 storey high-rise towers have dedicated amenities for a relaxing & smart lifestyle.



# ENJOY

Life at the Paton Towers presents a series of magical moments for you and your family. We have created just the right recipe of great location, moments and exceptional amenities.

Life at Paton Towers is always full of excitement and there is never a dull moment at this gated community.

# INCARNATE YOUR LIFE IN



Sq.Ft.

Paton Towers, Kandivali comprises of three wings - A, B & C in a grandeur twenty-three storey towers, which are connected with three grand lobbies. Bordered with prettifying walls, the grand lobby welcomes you to an unexpected lifestyle in Mumbai. Keeping an eye to every small architectural design, the towers are equipped with 323 sq.ft carpet area 1 and 2 BHK homes designed with modern architecture and zero wastage of space.

A commercial ground floor, 2400 sq. ft. indoor amenity area, sky touching external amenities and excellent connectivity to important clusters in the city for an incessant life, is a rarity in Kandivali.

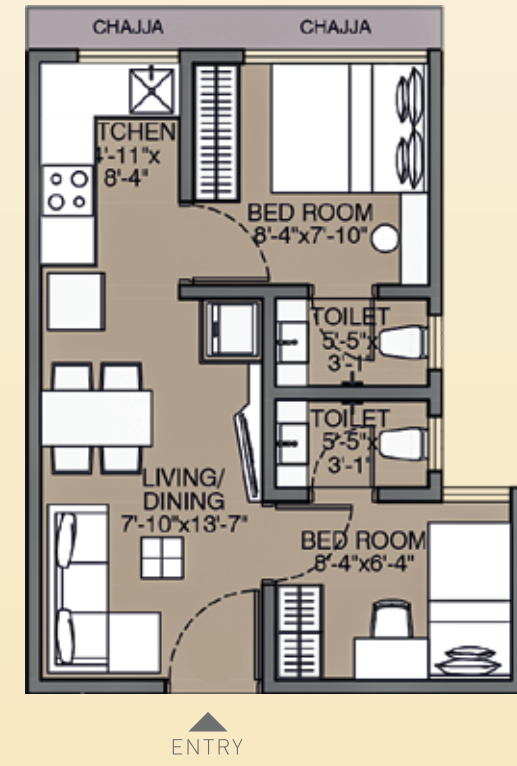
## COSY HOMES AT PATON TOWERS

# Unit Plan 1BHK



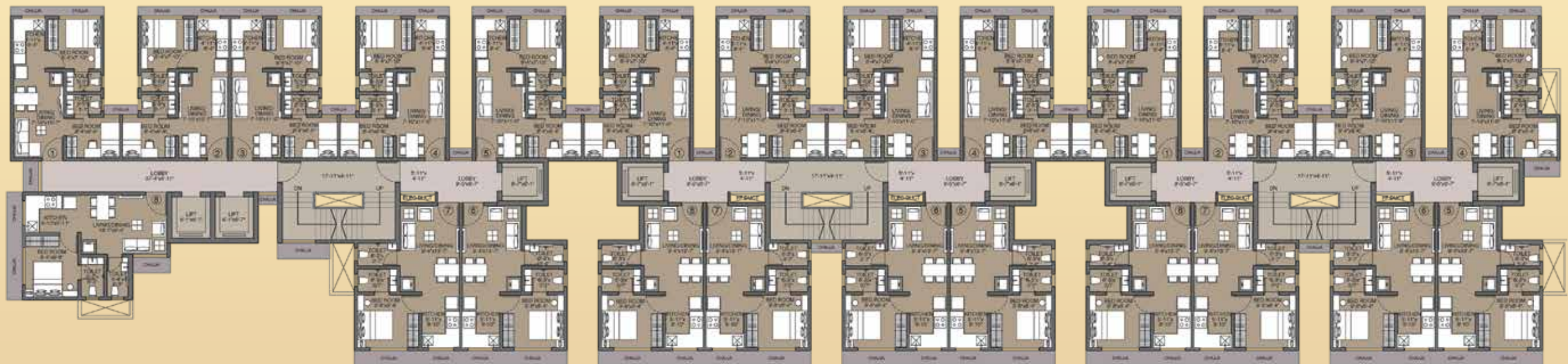
RERA  
Carpet Area:  
323 Sq.ft.

# Unit Plan 2BHK



RERA  
Carpet Area:  
323 Sq.ft.

# Floor Plan



# EXQUISITE AMENITIES



Fitness Centre



Multipurpose Hall



Yoga Studio



Library/Reading Room



Society Office



Fire Fighting System



Sewage Treatment Plants



Rainwater Harvesting



Power Backup



Intercom Facility with Trained Security Guards



Dedicated 2 Wheelers Parking Area



# SKY TOUCHING AMENITIES

The modern lifestyle at Paton Towers comes with noble terrace amenities for everyone in the family.



Play Lawn



Multipurpose Court



Gazebo/Cabana



Children's Play Area



Senior Citizen Area



# METICULOUSLY PLANNED HOMES

Along with blissful external amenities, your home should tell the story of who you are and be a collection of what you love. The homes are meticulously designed with zero wastage.



# INTERIOR AMENITIES

## Flooring

- Vitrified tiles in entire flat.

## Kitchen

- Granite kitchen platform with stainless steel sink.
- Provision of inlet and outlet points for washing machine.
- Points for fridge, water purifier, exhaust fan, mixer, oven & other appliances.

## Bathroom

- Anti-skid tiles.
- Designer dado tiles.
- Branded C.P. fittings and Sanitaryware.

## Doors and windows

- Decorative doors and modern fittings with safety devices.

## Painting

- POP finish with acrylic bound distemper paints in the entire flat.
- External painting of 2 coats of 100% acrylic ICI deluxe weather shield max.

## Electrical

- Concealed ISI copper wiring with adequate points.





# THE EXCITEMENT OF A LUXURIOUS LIFESTYLE

*Elegant lifestyles at Paton Towers comes without an intermission. A fantastic fitness regime at the gym, a tranquil walk down the terrace are just trailers of a colossal lifestyle.*

# LOCATION

Paton Towers is located at the most promising location to keep you connected to everything you need for a ceaseless life.



Hospital	Public Transport	School/College	Malls	Airport	Temple/Mosque	Highway	Gardens	Multiplex
Samadhan Maternity Home - 750m	Kandivali Station (E) - 3km	Pal Rajendra B.Ed College - 1km	Growl's 101 - 2.5km	International Airport - 12.3km	Sai Baba Temple - 1km	Western Express Highway - 1.8km	Municipal Garden - 100m	PVR(Growels Mall) - 2.5km
Jeevan Jyoti Hospital - 1km	Malad Station (E) - 3.4km	Lokhandwala Foundation School - 700m	Oberoi Mall - 5.4km	Domestic Airport - 13.2km	Mahakali Mandir - 850m	Eastern Express Highway - 29km	Formal Garden - 700m	PVR Milap - 4.3km
DNA Multispeciality - 1.1km	Akurli Metro Station - 3km	Anudatt Vidyalaya School - 1.1km	Dmart - 2.3km		Garib Nawaz Mandir - 850m		Sai Garden - 500m	Cinemax(Infiniti Mall) - 6.7km
			Big bazaar - 2.5km					

DISCLAIMER: Images used for representational purpose only. Furniture, fixtures and specifications as shown are not a part of the offered apartment for sale.

## ABOUT THE COMPANY

From developing exclusive projects to excellent quality homes that carry the assurance of high quality & clear legal titles, Darshan Developers and Paton Constructions Pvt Ltd has made a significant impact in creating a modern-day living.

Incorporated in 1995, the group has come a long way in delivering projects with modern development along with the promise of quality, built over trust and experience. Darshan Developers epitomizes "Making Realty Dream a Reality" entirely. It serves as a luminary in our mission to create exceptional luxury landmarks in the city & we all strive to live it daily. We draw heavily from the intrinsic quality of our founder, "Mr.Pravin Satra" in imbibing & actually living the brand. The most elegant building in the upmarket affluent neighbourhood showcases our aesthetic superiority.

Our persistent strive is to provide quality construction to our customers and offer elegant amenities for a comfortable lifestyle. Today, Darshan Group is well known for excellent planning & design of quality construction with speed in Mumbai suburbs.

## COMPLETED PROJECTS



# NEW HOME NEW BEGINNINGS NEW MEMORIES



**PATON  
TOWERS**





## CREDITS

RCC Consultants: Sura & Associates  
Liasoning Architect: Essar Group  
Designing Architect: KPA  
MEP Consultants: Eco MEP  
Legal Advisor: Adv. Mukesh B. Malkan  
Advertising: Mo-Mantra  
Construction Partner: Dreamax Developers Private Limited

A Project by

**Paton**  
Constructions Private Limited

  
**DARSHAN DEVELOPERS**  
Making REALTY Dream a REALITY

Office Address

1/A, 1st Floor, Sagar Complex, M.G. Road, Vile Parle (East), Mumbai - 400057,  
[www.darshandevolvers.com](http://www.darshandevolvers.com)

Site Address: Paton Towers, Akurli Cross Road, Lokhandwala Complex, Kandivali East,  
Contact No.: +91 82855 55066 / 77 / 88 / 99

Email: [Info@patonconstructions.in](mailto:Info@patonconstructions.in) | Website: [www.patonconstructions.in](http://www.patonconstructions.in)