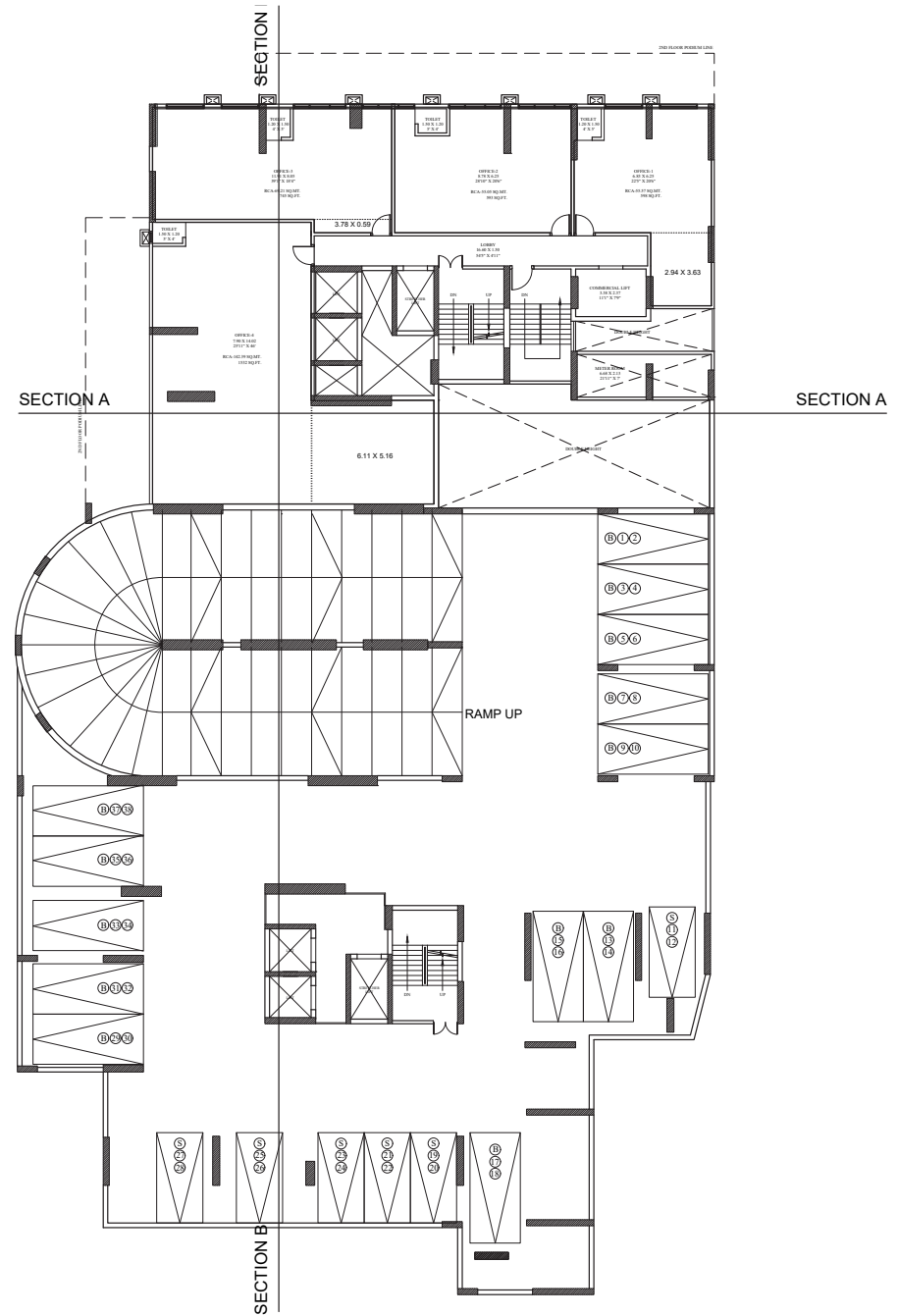
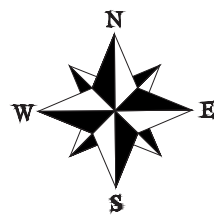
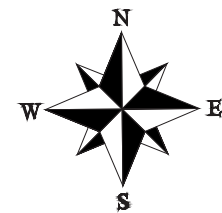


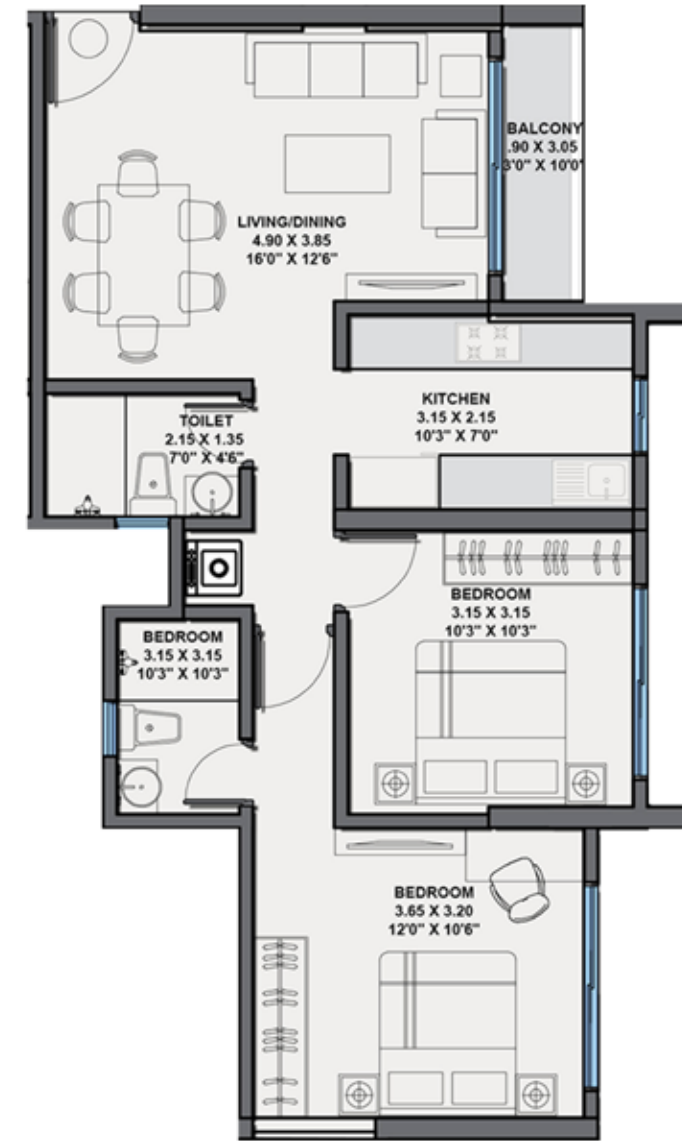
GROUND FLOOR



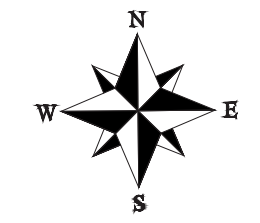
1st FLOOR COMMERCIAL OFFICE/PODIUM FLOOR



A-WING PLANS

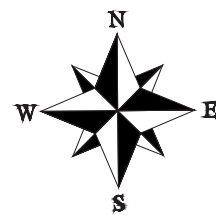


A-WING
TYPICAL FLOOR PLAN - UNIT 1
Carpet Area = 686 sq.ft. 2 BHK

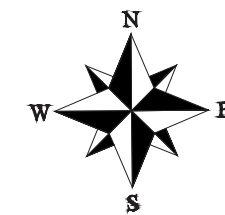


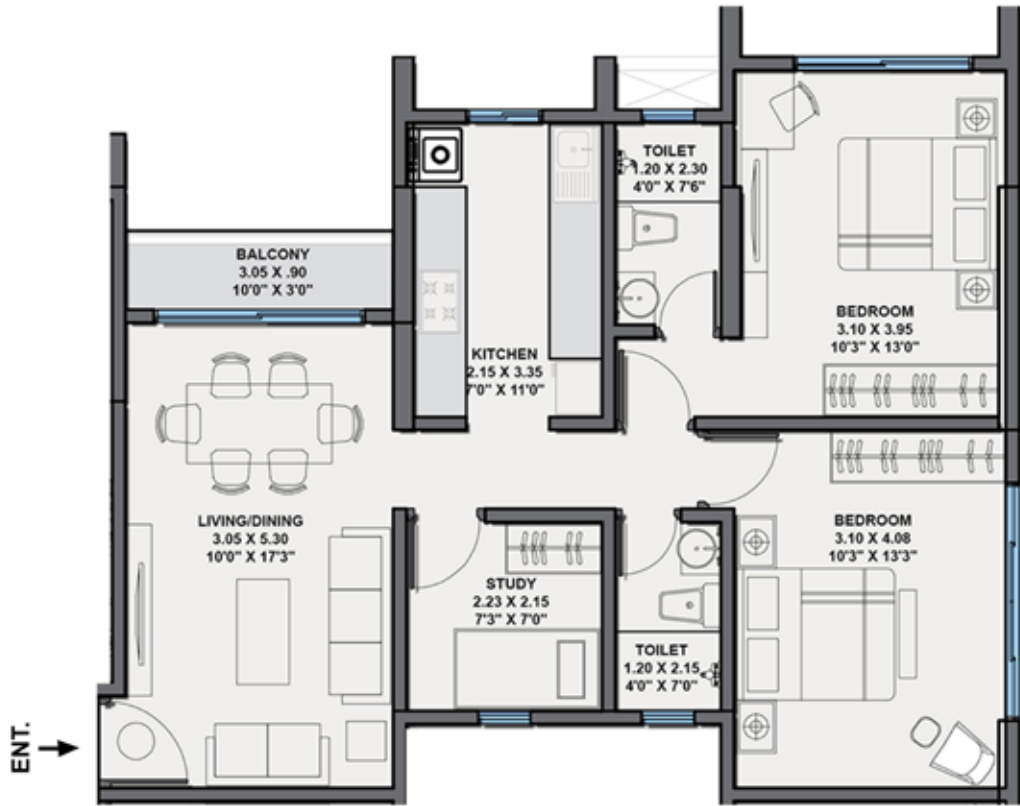


A-WING
TYPICAL FLOOR PLAN - UNIT 2
Carpet Area = 1107 sq.ft. 3.5 BHK

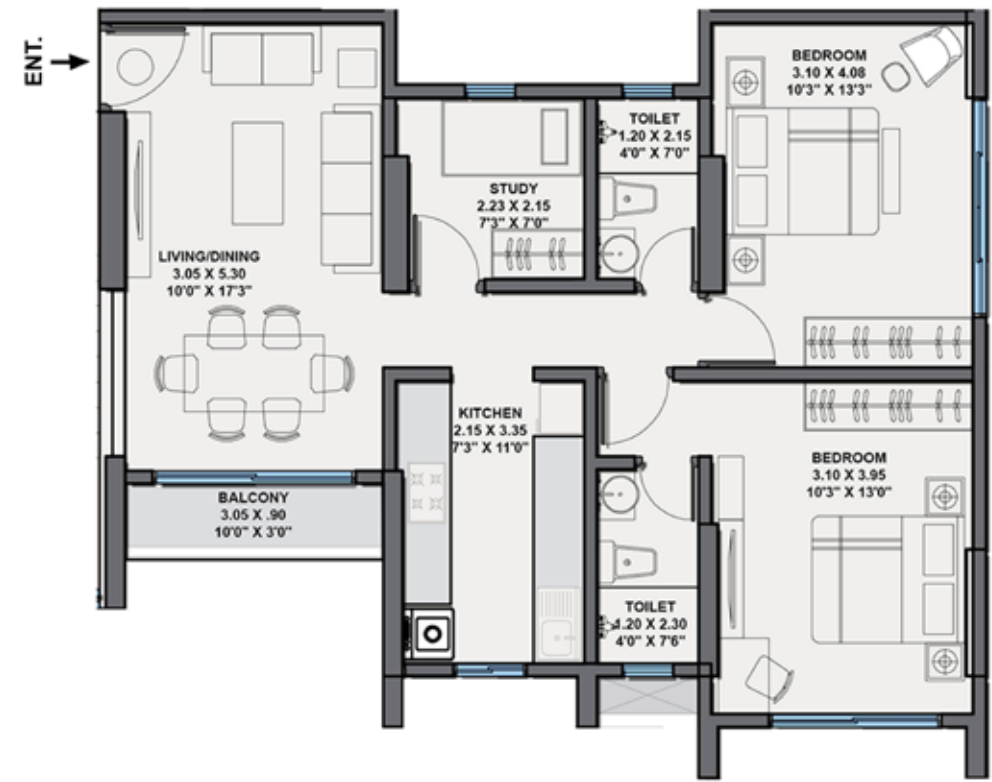
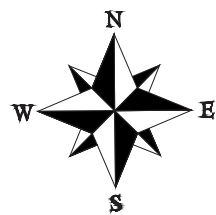


A-WING
TYPICAL FLOOR PLAN - UNIT 3
Carpet Area = 972 sq.ft. 3 BHK

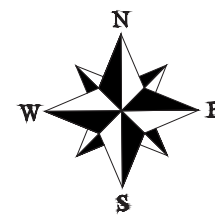




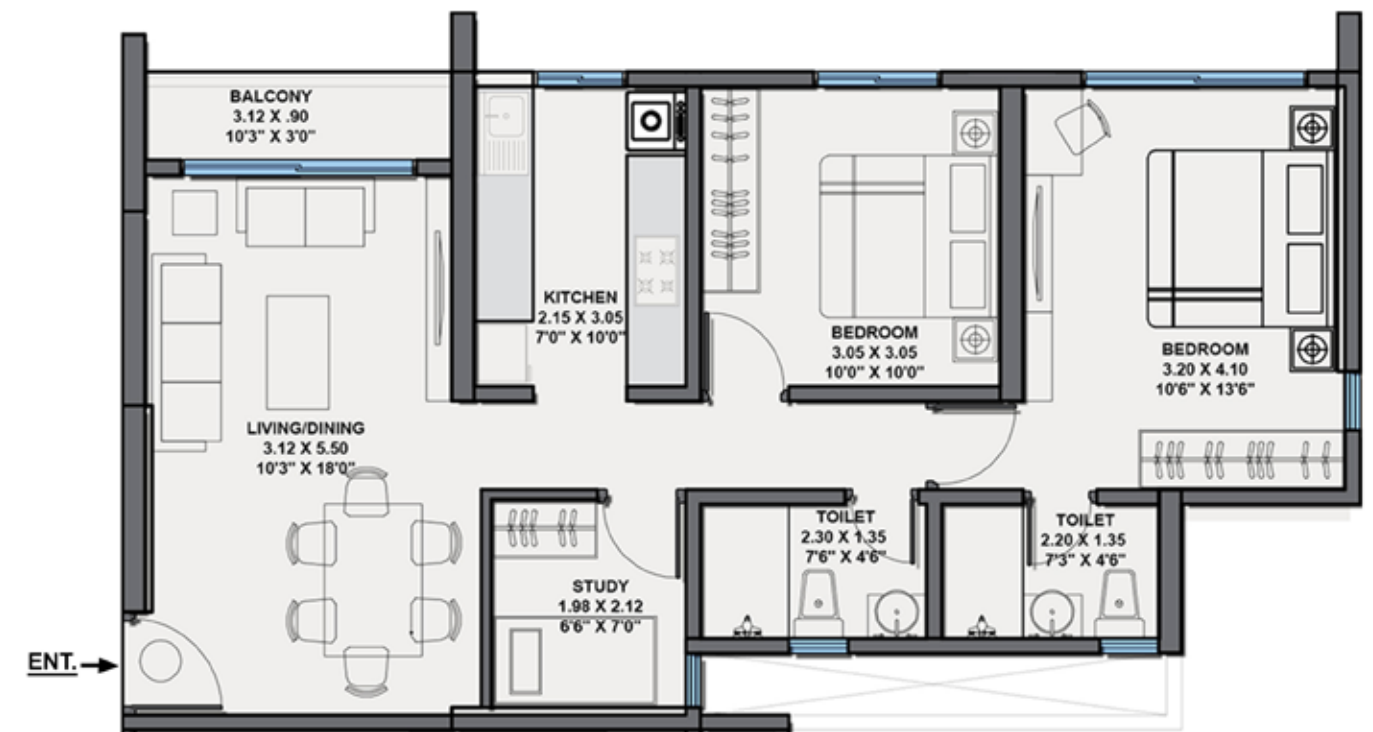
A-WING
TYPICAL FLOOR PLAN - UNIT 4
Carpet Area = 761 sq.ft. 2.5 BHK



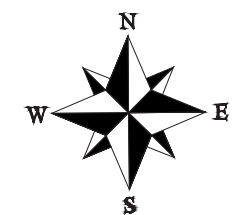
A-WING
TYPICAL FLOOR PLAN - UNIT 5
Carpet Area = 761 sq.ft. 2.5 BHK

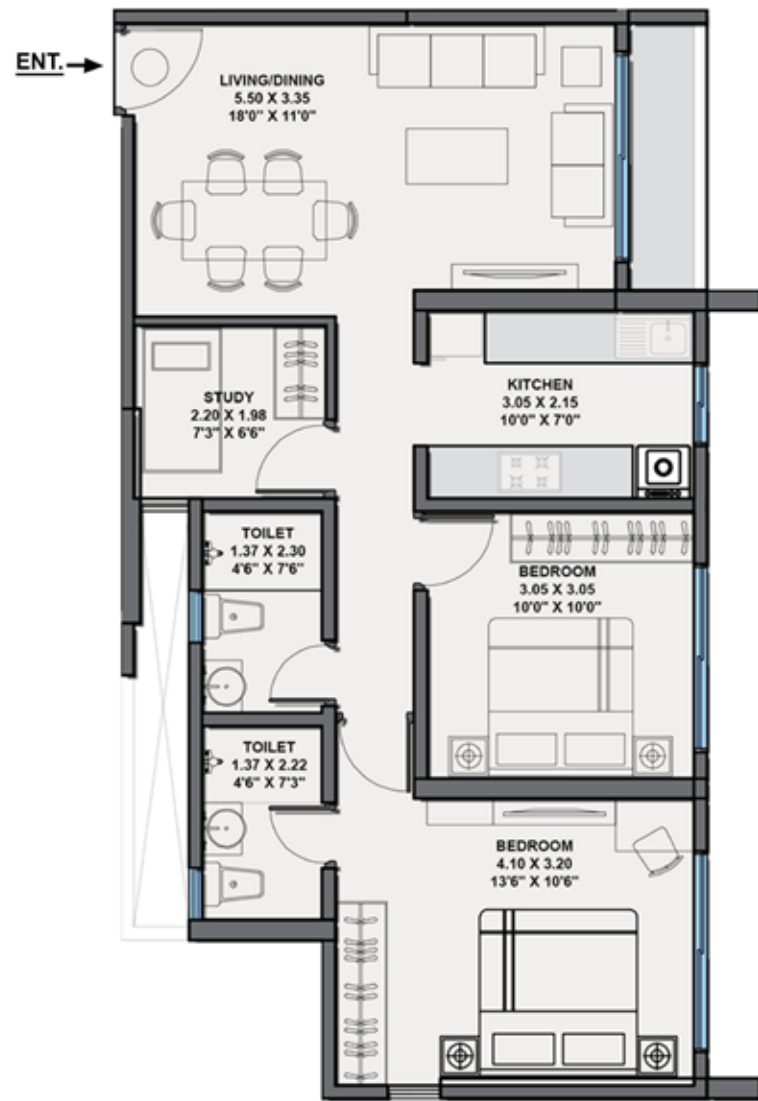


B-WING PLANS

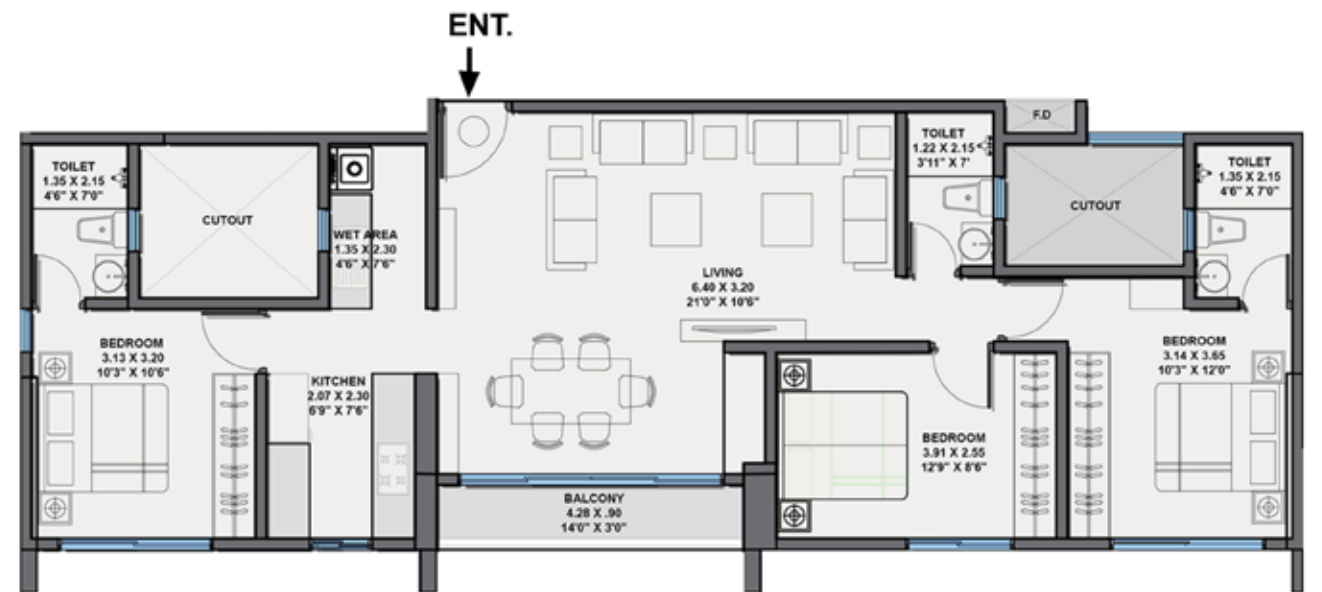
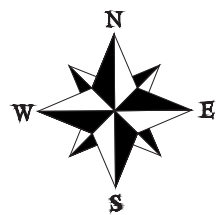


B-WING
TYPICAL FLOOR PLAN - UNIT 1
Carpet Area = 758 sq.ft. 2.5 BHK

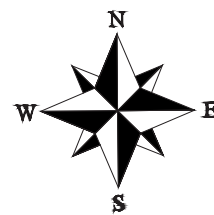


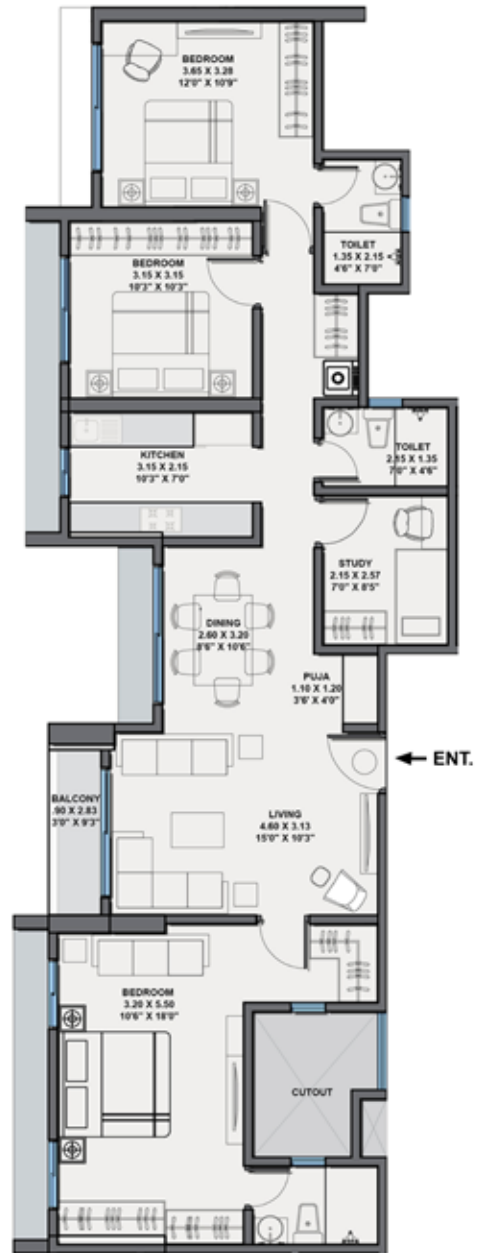


B-WING
 TYPICAL FLOOR PLAN - UNIT 2
 Carpet Area = 755 sq.ft. 2.5 BHK

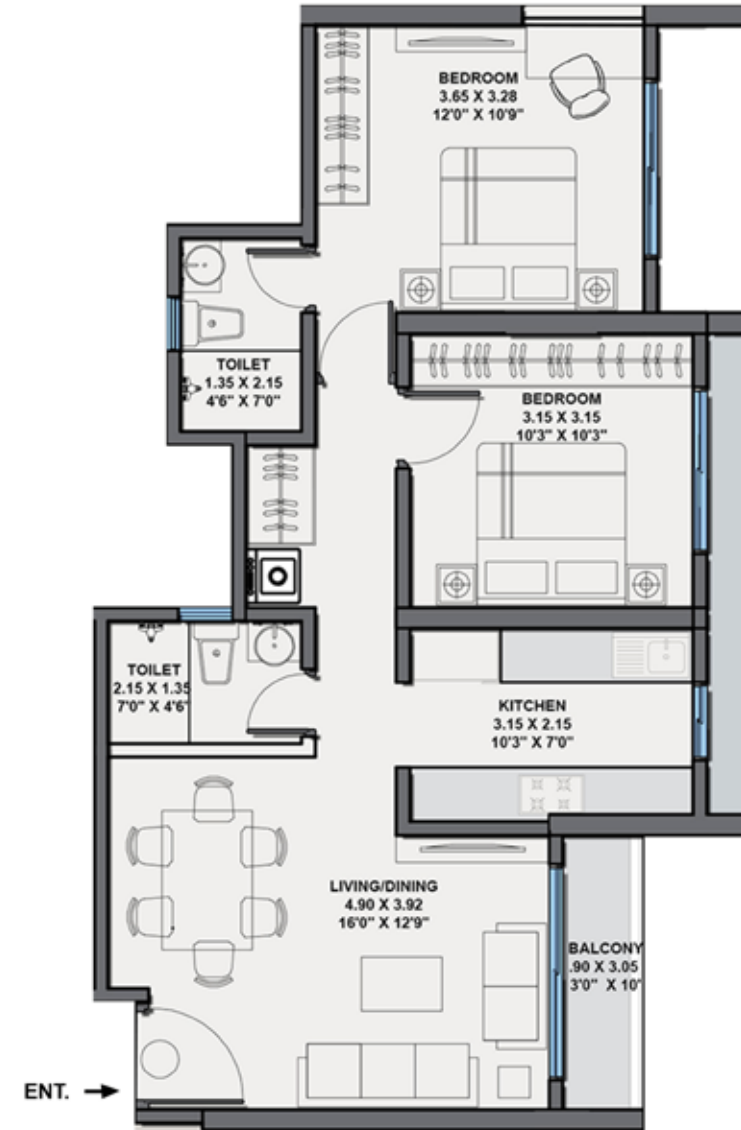
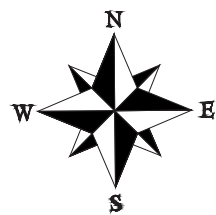


B-WING
 TYPICAL FLOOR PLAN - UNIT 3
 Carpet Area = 954 sq.ft. 3 BHK

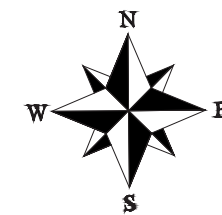


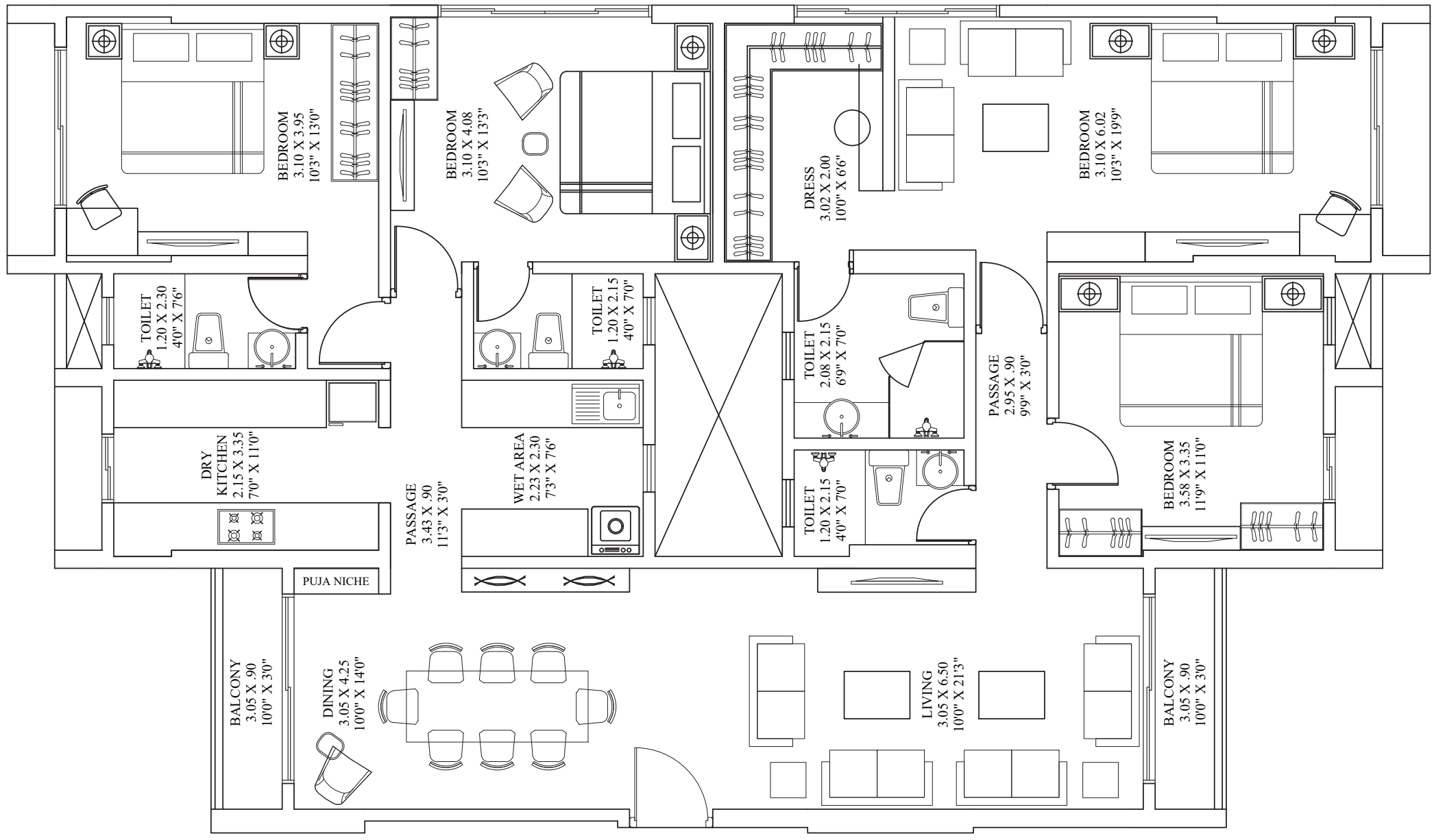


B-WING
TYPICAL FLOOR PLAN - UNIT 4
Carpet Area = 1100 sq.ft. 3.5 BHK



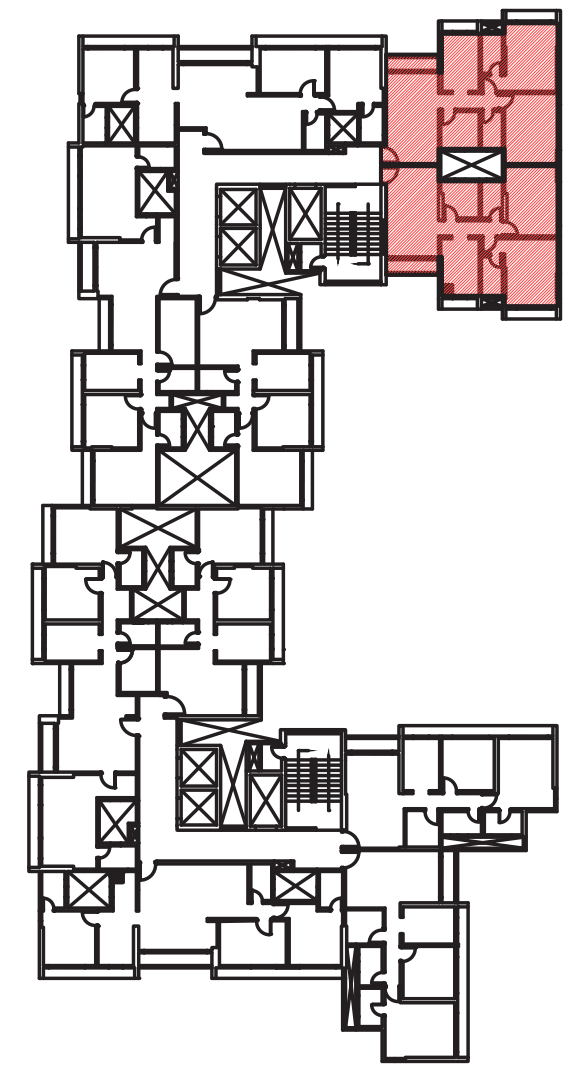
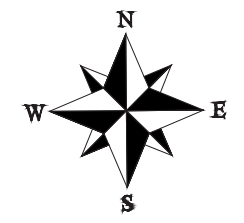
B-WING
TYPICAL FLOOR PLAN - UNIT 5
Carpet Area = 686 sq.ft. 2 BHK

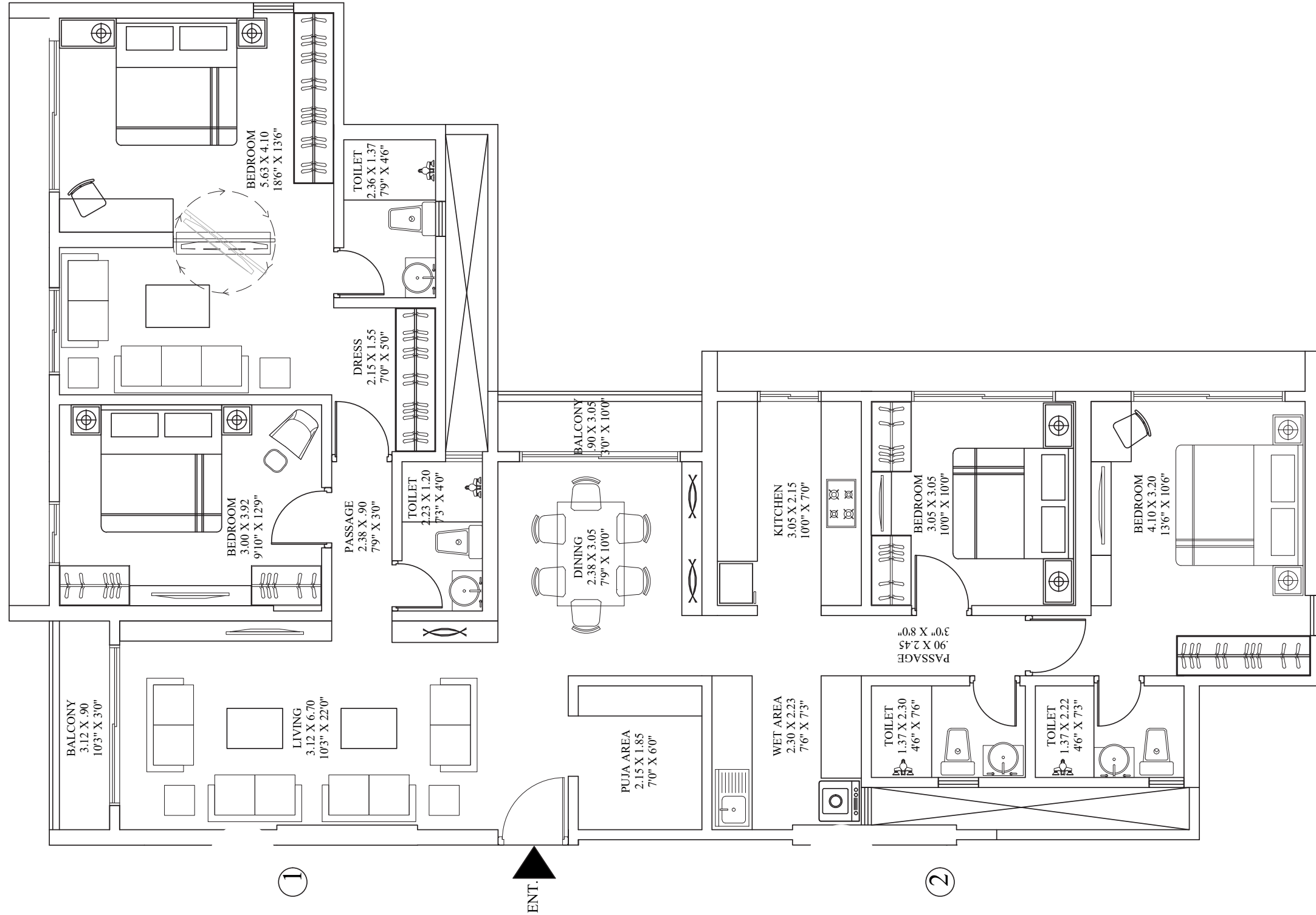




ENT.

A-WING
JODI FLAT - 4 BHK UNIT
 Carpet Area = 1522 sq.ft.





B-WING
JODI FLAT - 4 BHK UNIT
 Carpet Area = 1513sq.ft.

