

adani

Realty

PRESENTS

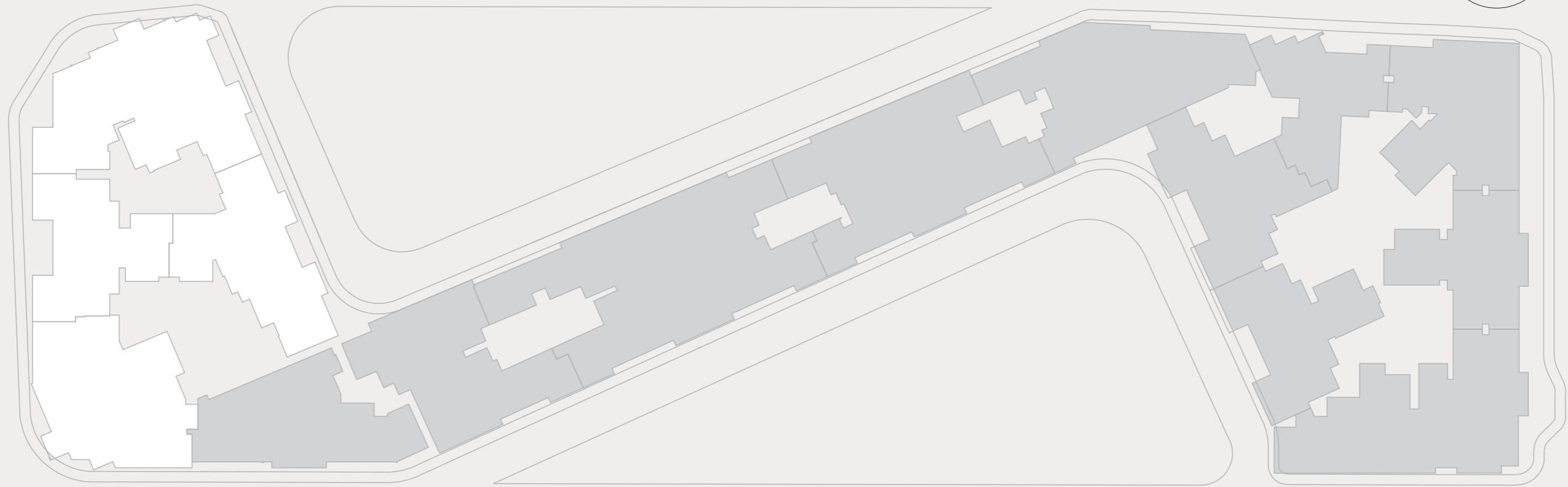
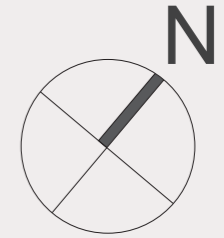
TEN 3KC

---

TYPICAL  
FLOOR PLANS

---

# MASTER KEY PLAN

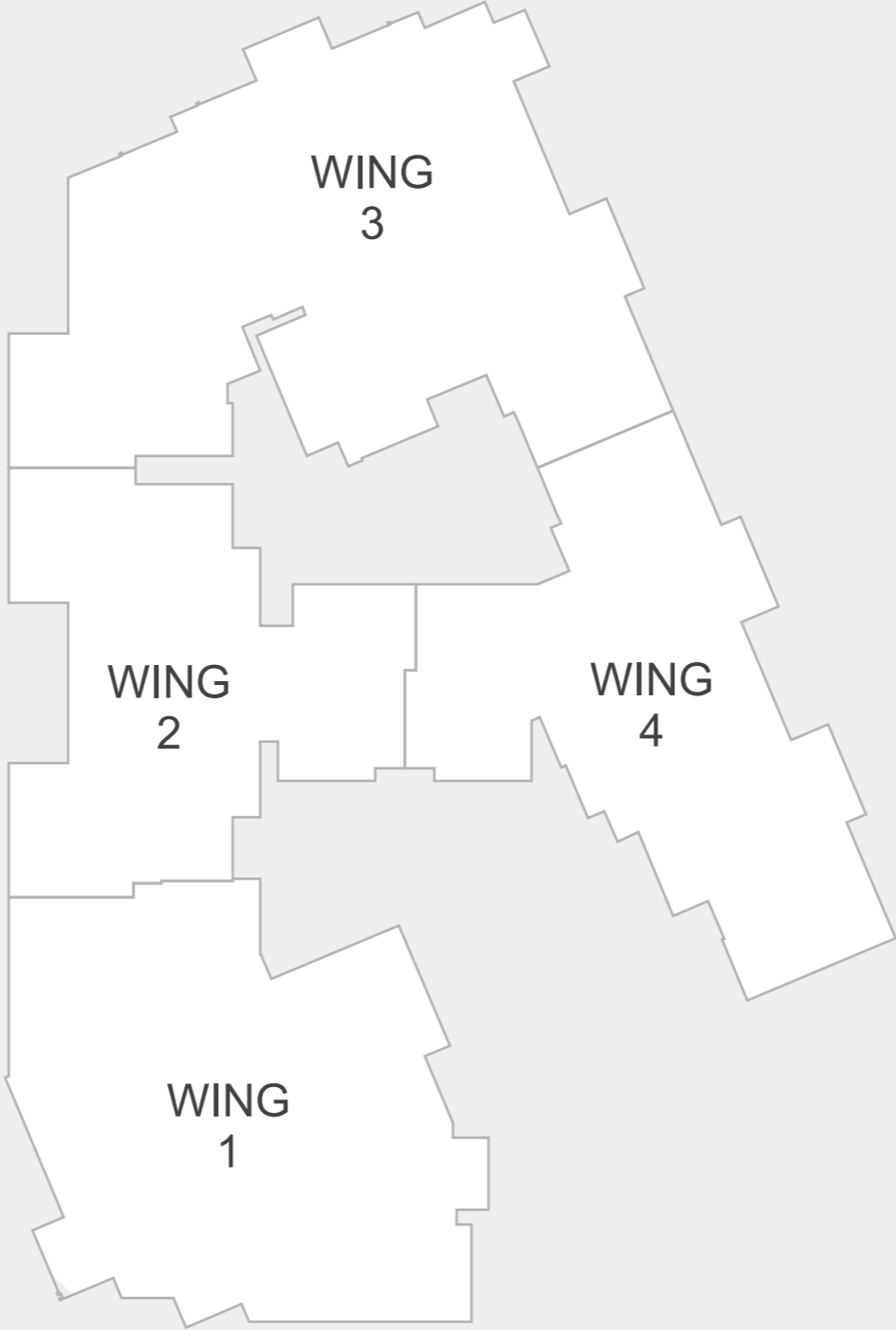


ZONE A

ZONE B

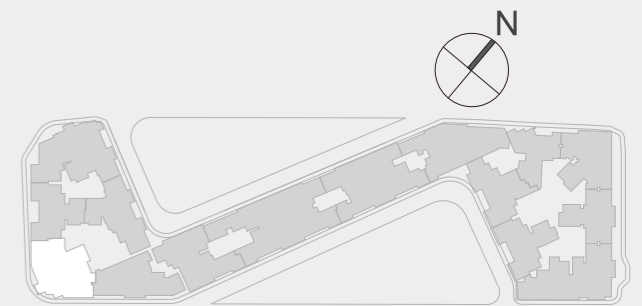
ZONE C

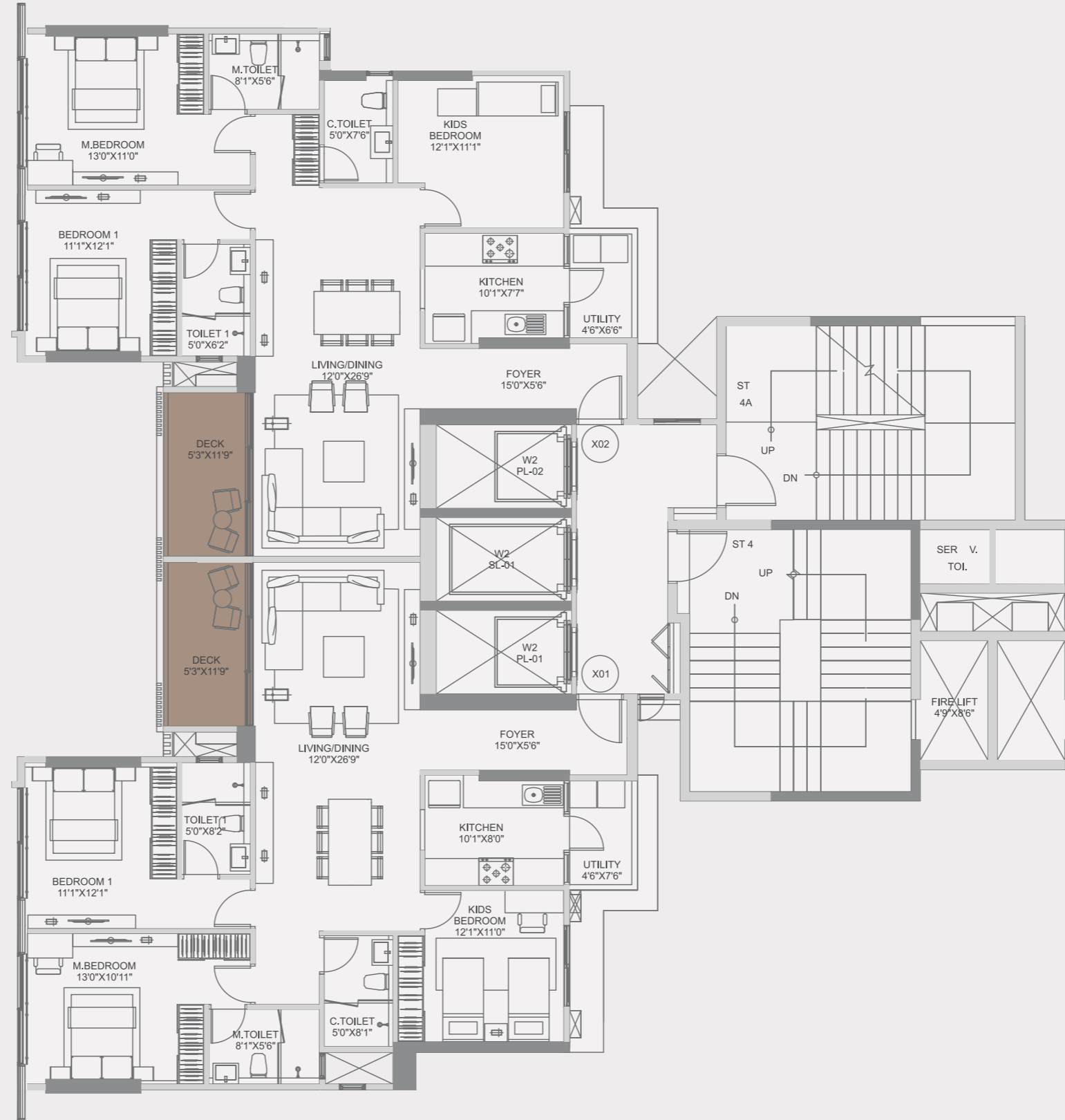
# ZONE A



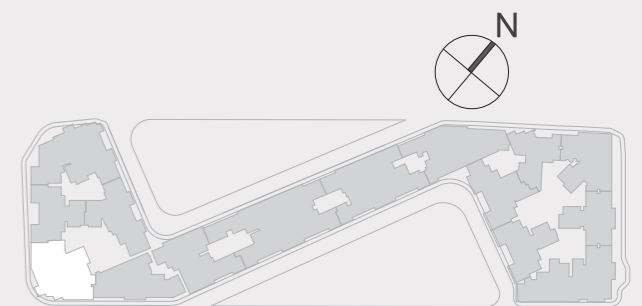


**WING - 1  
TYPICAL FLOOR PLAN**



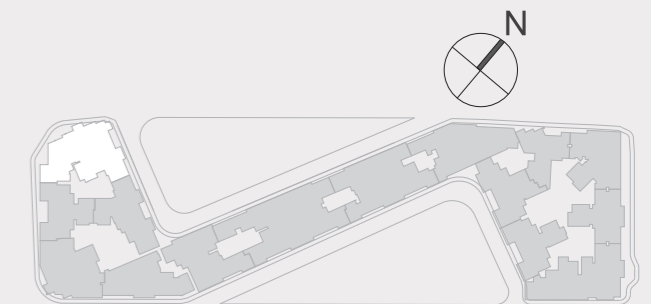


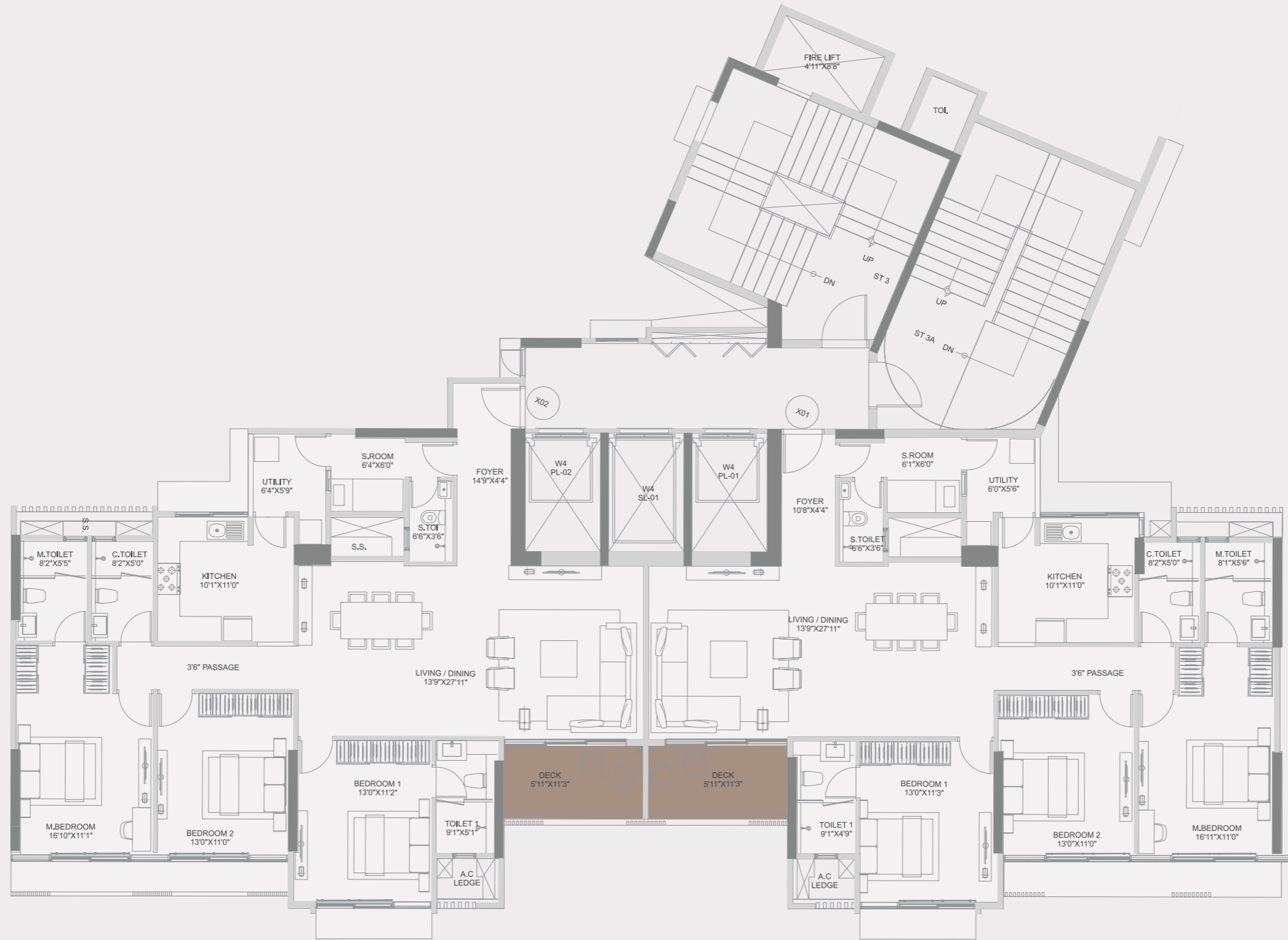
**WING - 2  
TYPICAL FLOOR PLAN**



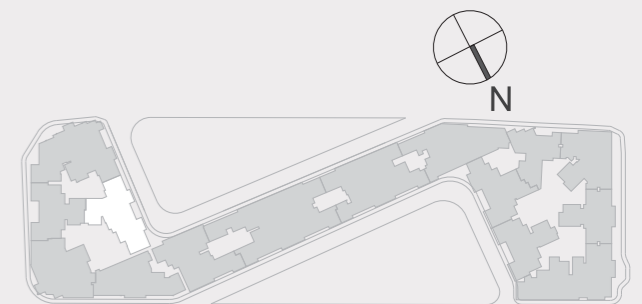


**WING - 3**  
**TYPICAL FLOOR PLAN**

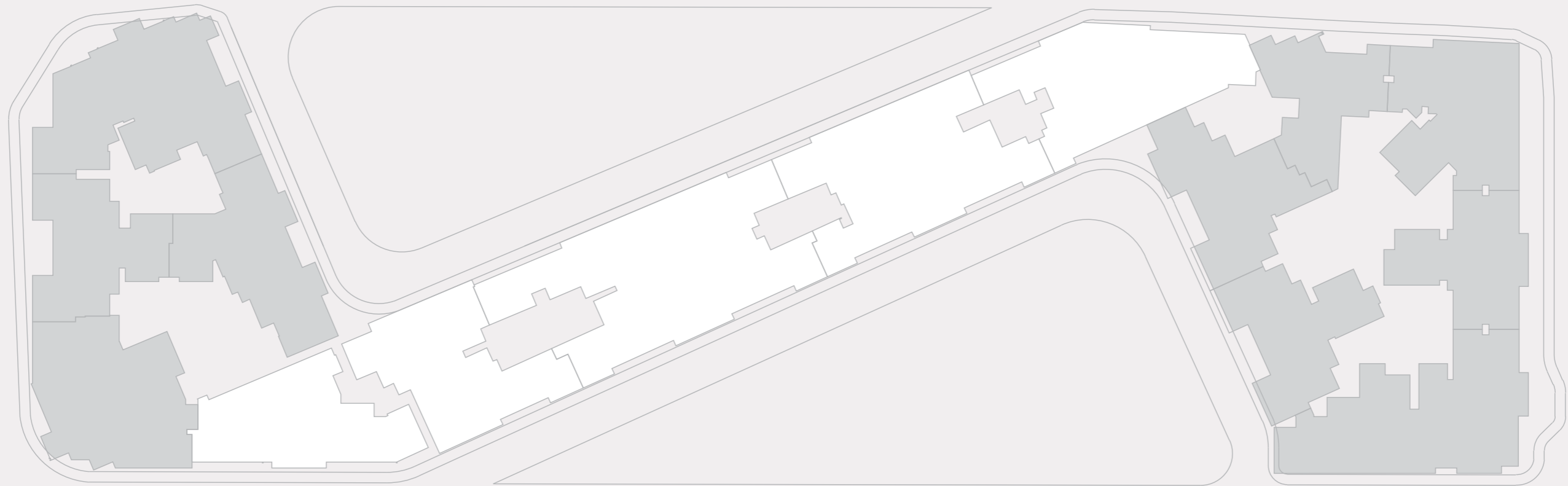
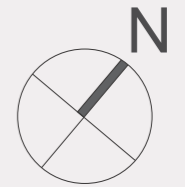




**WING - 4**  
**TYPICAL FLOOR PLAN**



# MASTER KEY PLAN



ZONE A

ZONE B

ZONE C

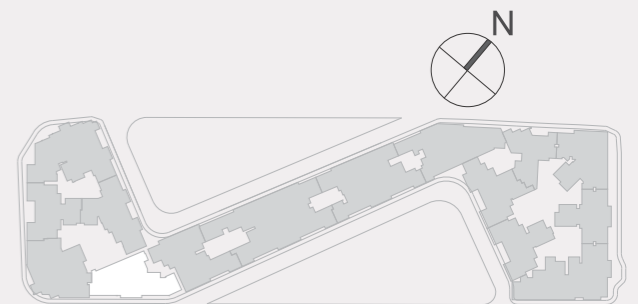


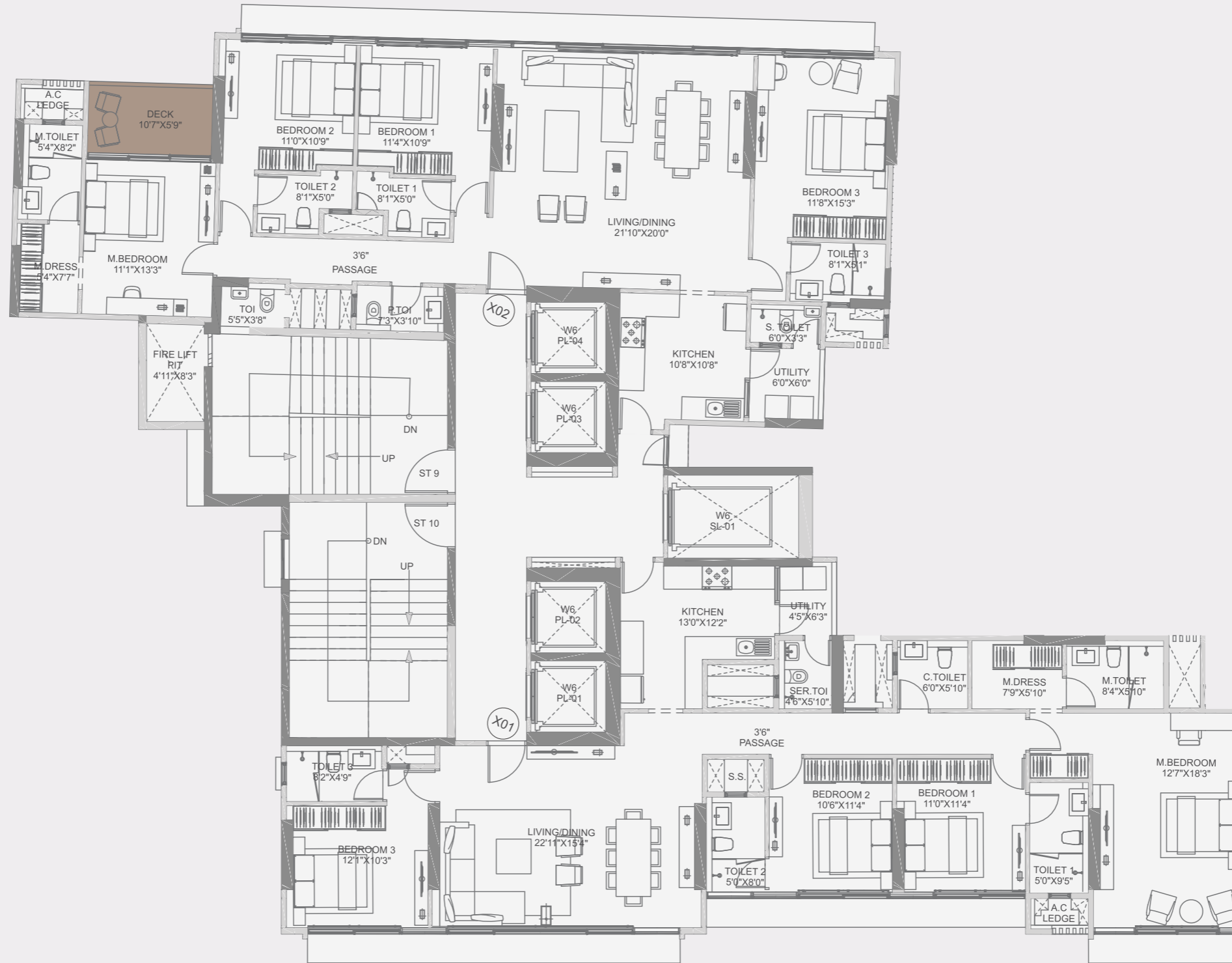
# ZONE B



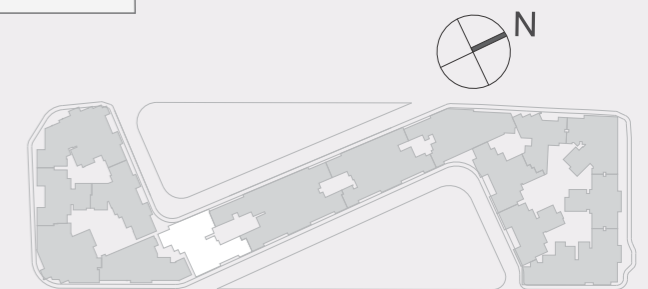


**WING - 5  
TYPICAL FLOOR PLAN**



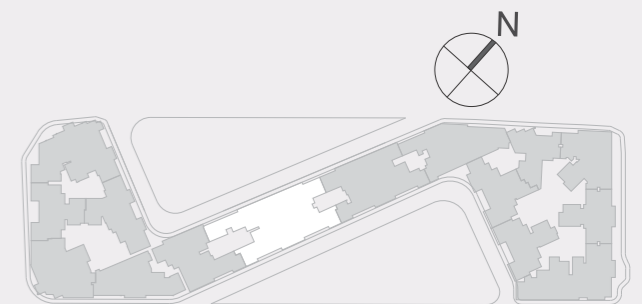


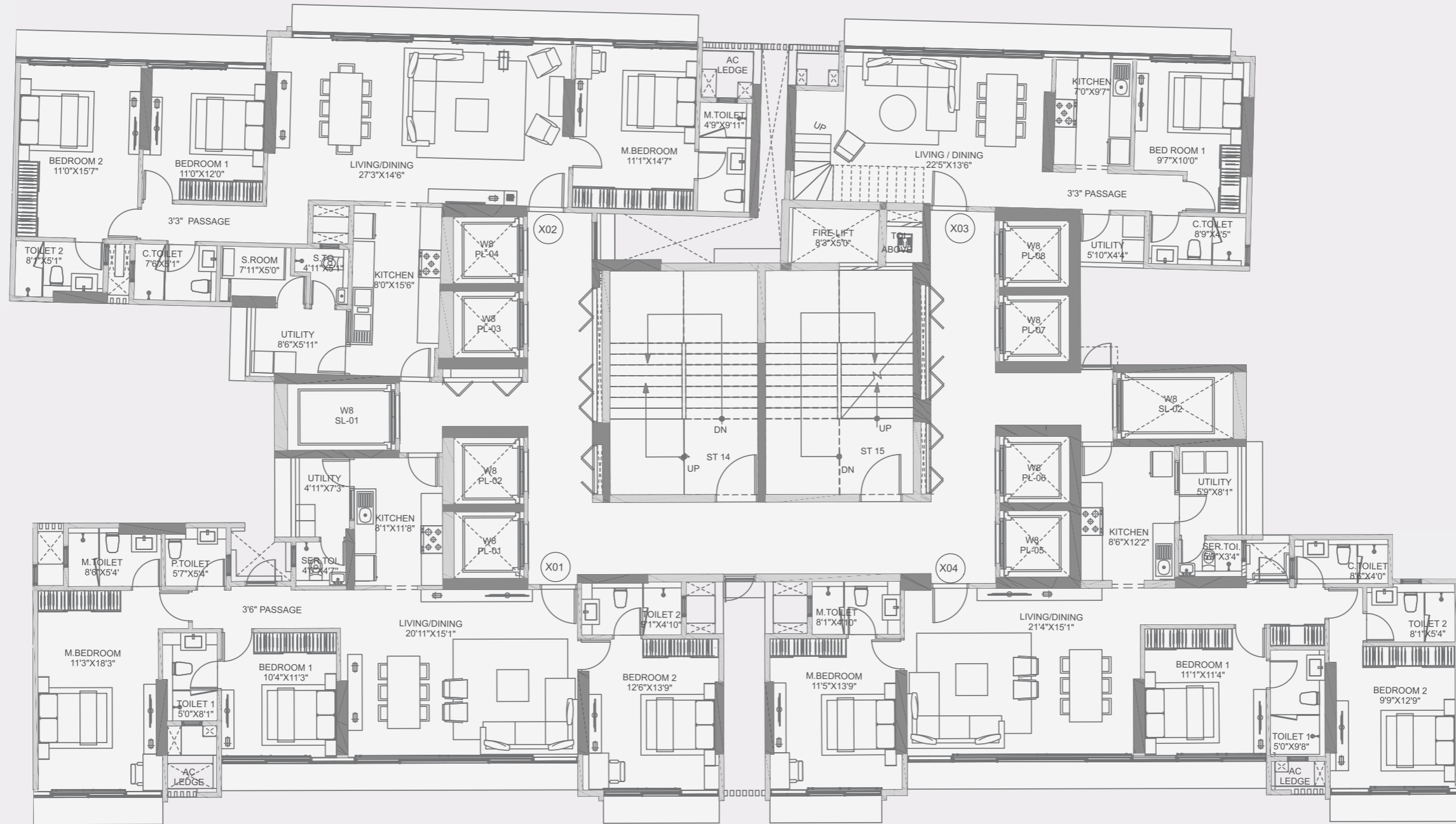
**WING - 6**  
**TYPICAL FLOOR PLAN**



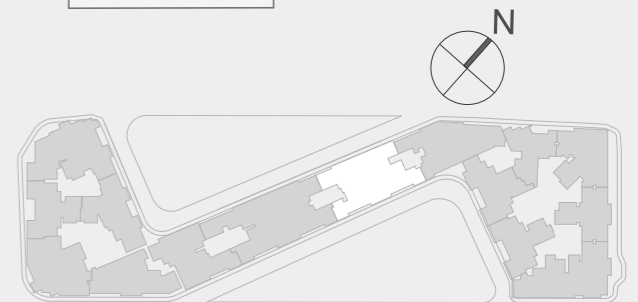


**WING - 7  
TYPICAL FLOOR PLAN**



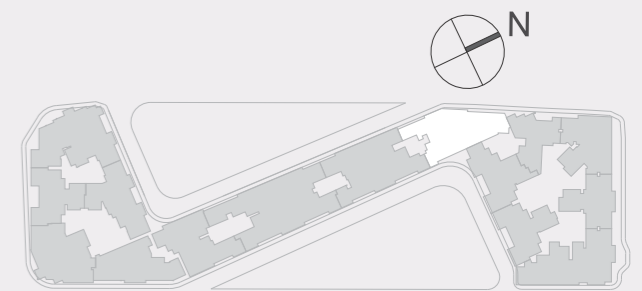


**WING - 8**  
**TYPICAL FLOOR PLAN**

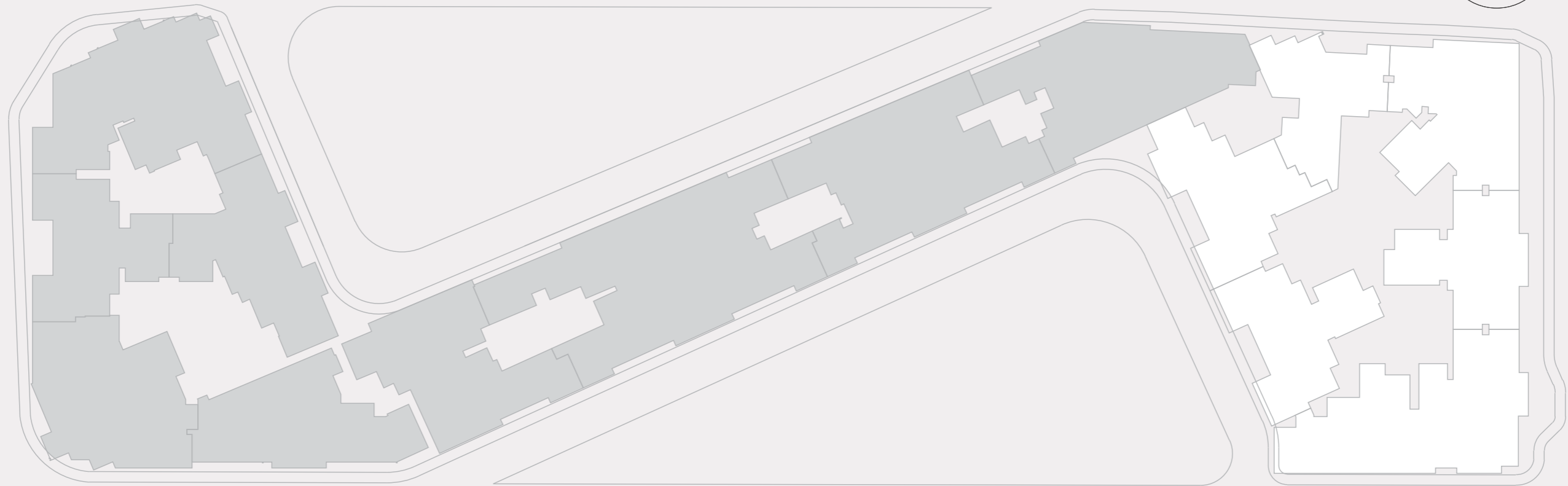
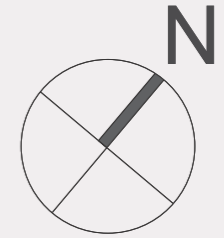




**WING - 9  
TYPICAL FLOOR PLAN**



# MASTER KEY PLAN

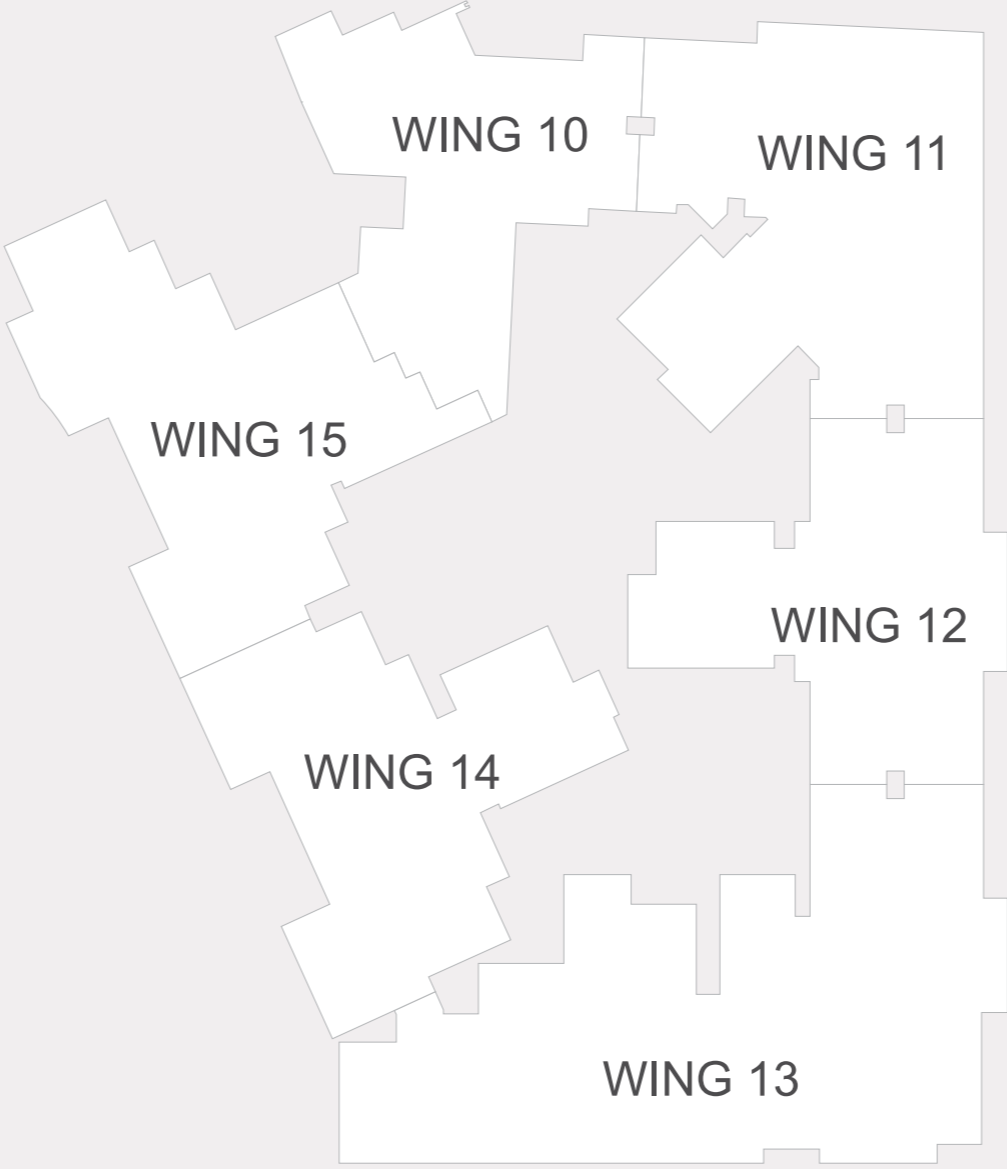


ZONE A

ZONE B

ZONE C

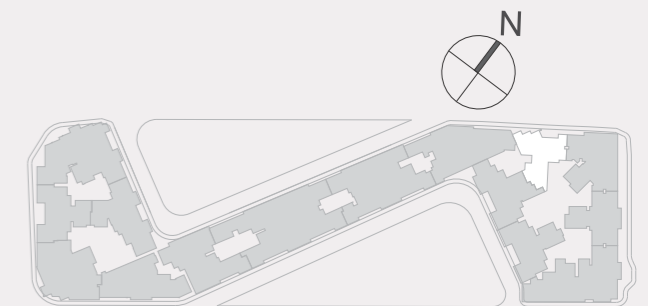
# ZONE C





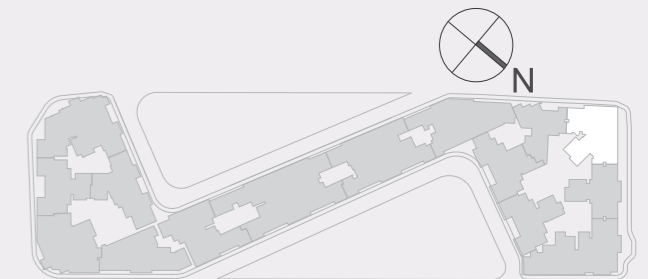


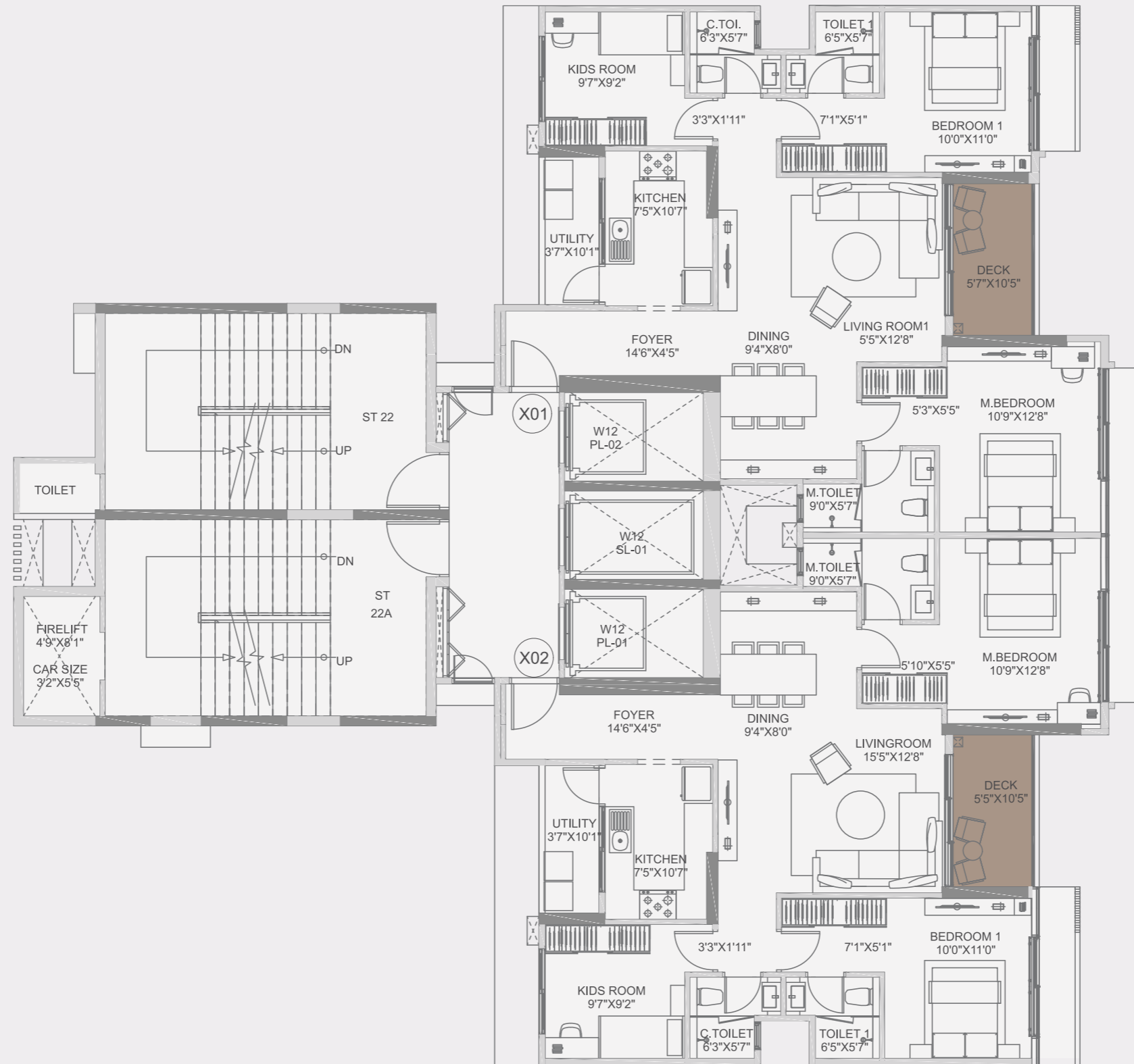
**WING - 10  
TYPICAL FLOOR PLAN**



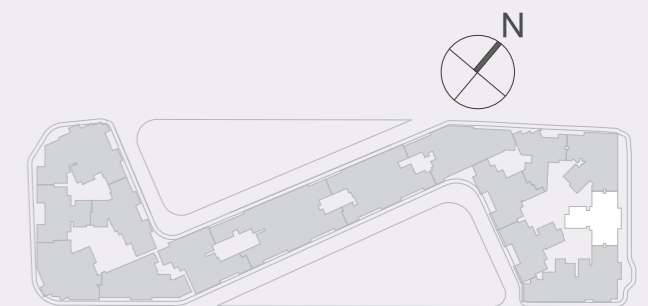


**WING - 11  
TYPICAL FLOOR PLAN**



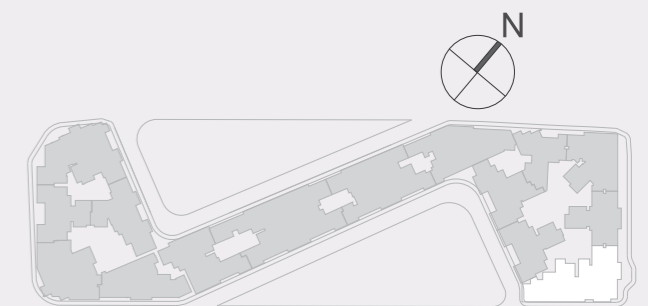


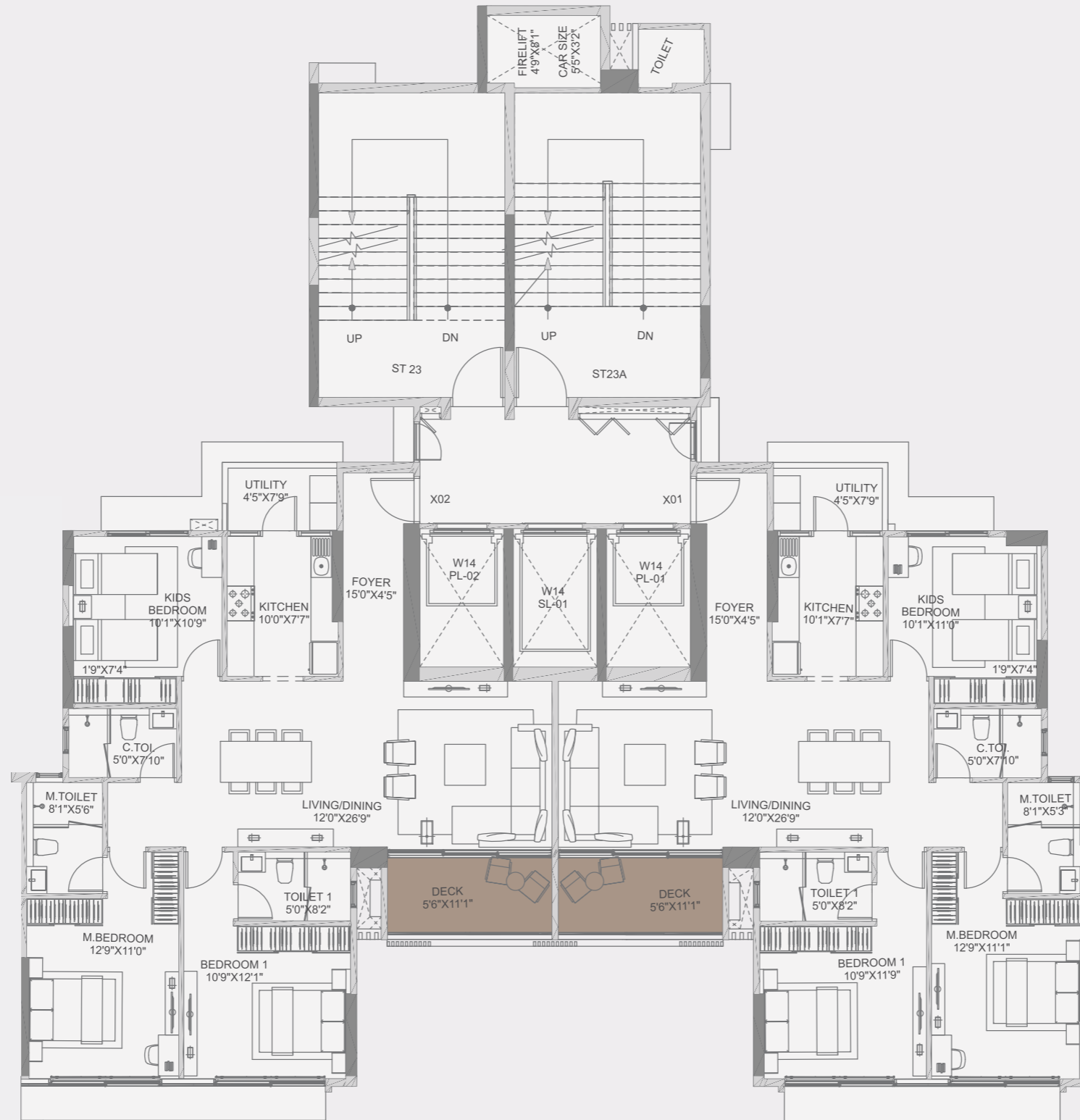
**WING - 12  
TYPICAL FLOOR PLAN**



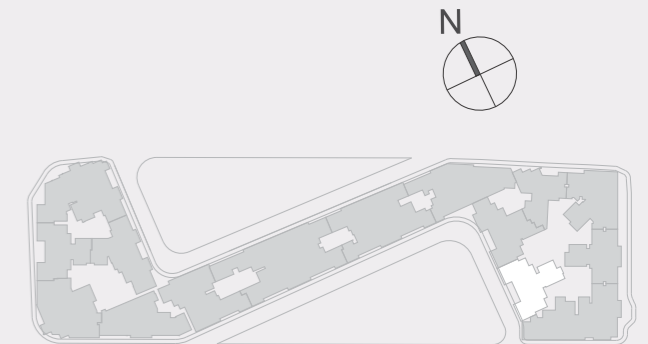


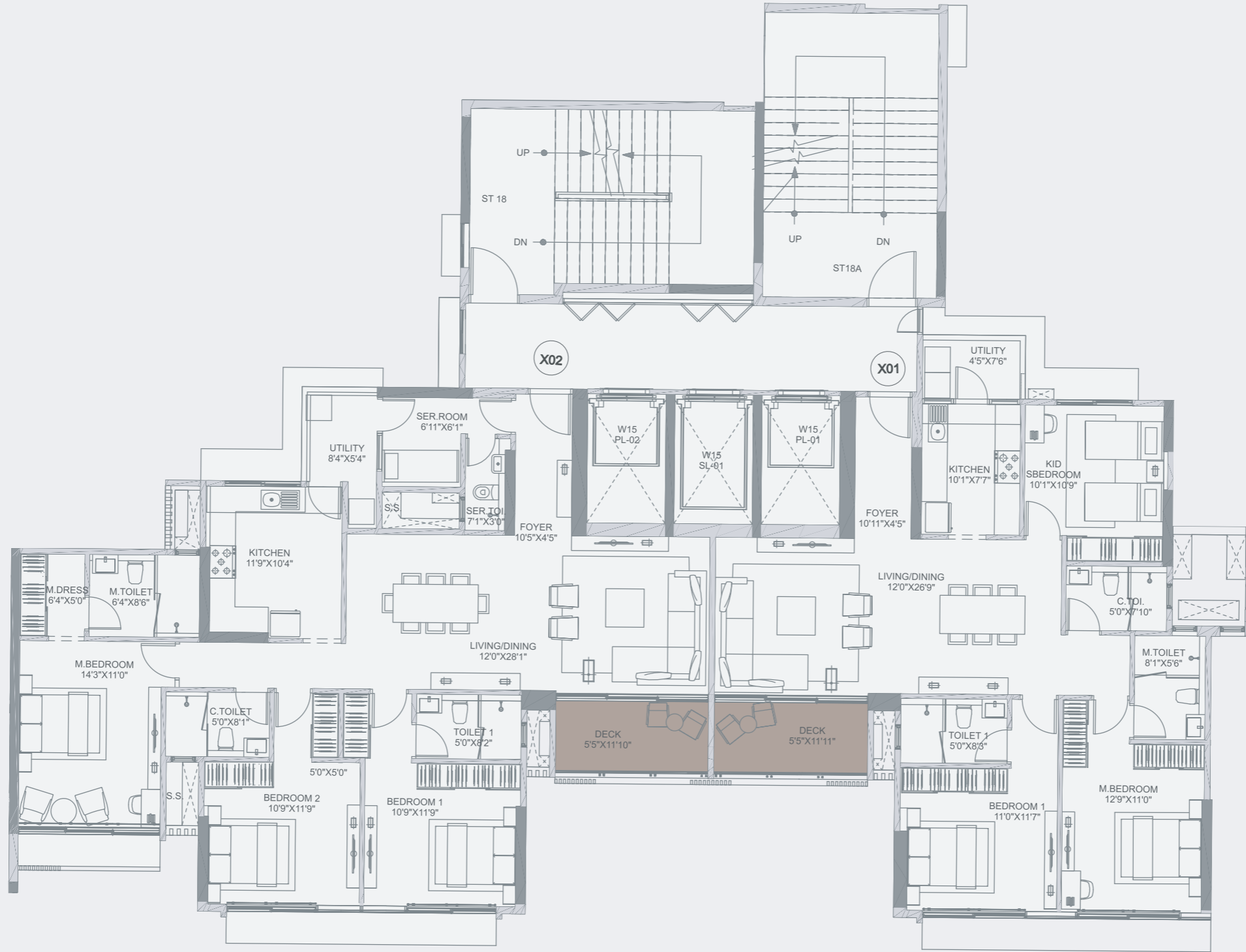
**WING - 13**  
**TYPICAL FLOOR PLAN**



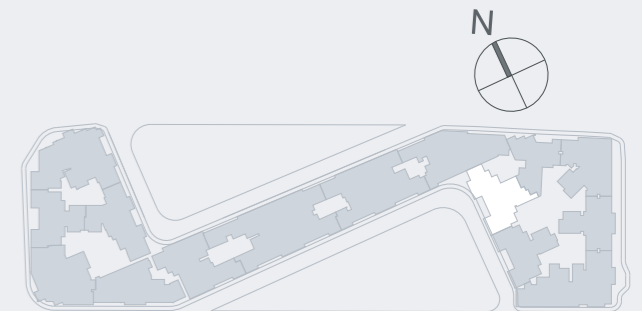
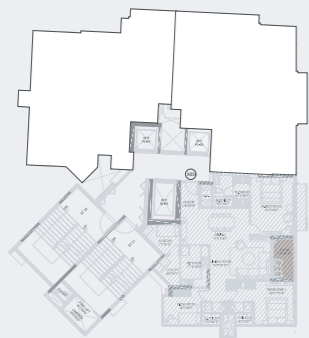


**WING - 14  
TYPICAL FLOOR PLAN**





**WING - 15  
TYPICAL FLOOR PLAN**



The information and material contained in this marketing collateral pertains to the Whole Project as disclosed on the website of the MahaRERA at <https://maharera.mahaonline.gov.in>. The information and material contained in this marketing collateral are intended to supplement the information available on the website of MahaRERA and is not intended to be a substitute thereto. Any person who is considering/evaluating any apartment in the registered real estate project in the Whole Project, are required to independently analyse, acquaint, and familiarise themselves with the information and disclosures pertaining to the Whole Project as uploaded on the website of MahaRERA. In the event of any conflict (whether actual or perceived) between the information and material contained in this marketing collateral and the details of the Whole Project available on the website of MahaRERA, the details as available on the website of MahaRERA shall prevail.

The photographs, images, videos, plans, drawings, sketches, renderings, pictorial and graphical representations, specifications, illustrations, other information etc. contained in the marketing collateral are typical stock/standard photography used by the industry at large and/or pure imagination and are intended to indicate a conceptual and aspirational lifestyle. The buildings and projects appearing in the images of Andheri West and constructed in the vicinity of the locality of the Whole Project are constructed by various other persons who are not connected with the Developer. The Whole Project is part of a Slum Rehabilitation Scheme.

The Developer expressly reserves the right to make modifications, revisions, amendments, relocations substitutions and/or withdrawals with respect to any facet or component of the Project/Whole Project, including as depicted in any information or material contained in this marketing, in the manner it may deem fit. This marketing collateral does not constitute an offer and / or contract of any type between the Developer and the recipient. All transactions in respect of this Project shall be subject the terms and conditions of the agreement for sale entered between the Developer and the Purchaser.