

11TH AMENITY UPPER LEVEL FLOOR PLAN



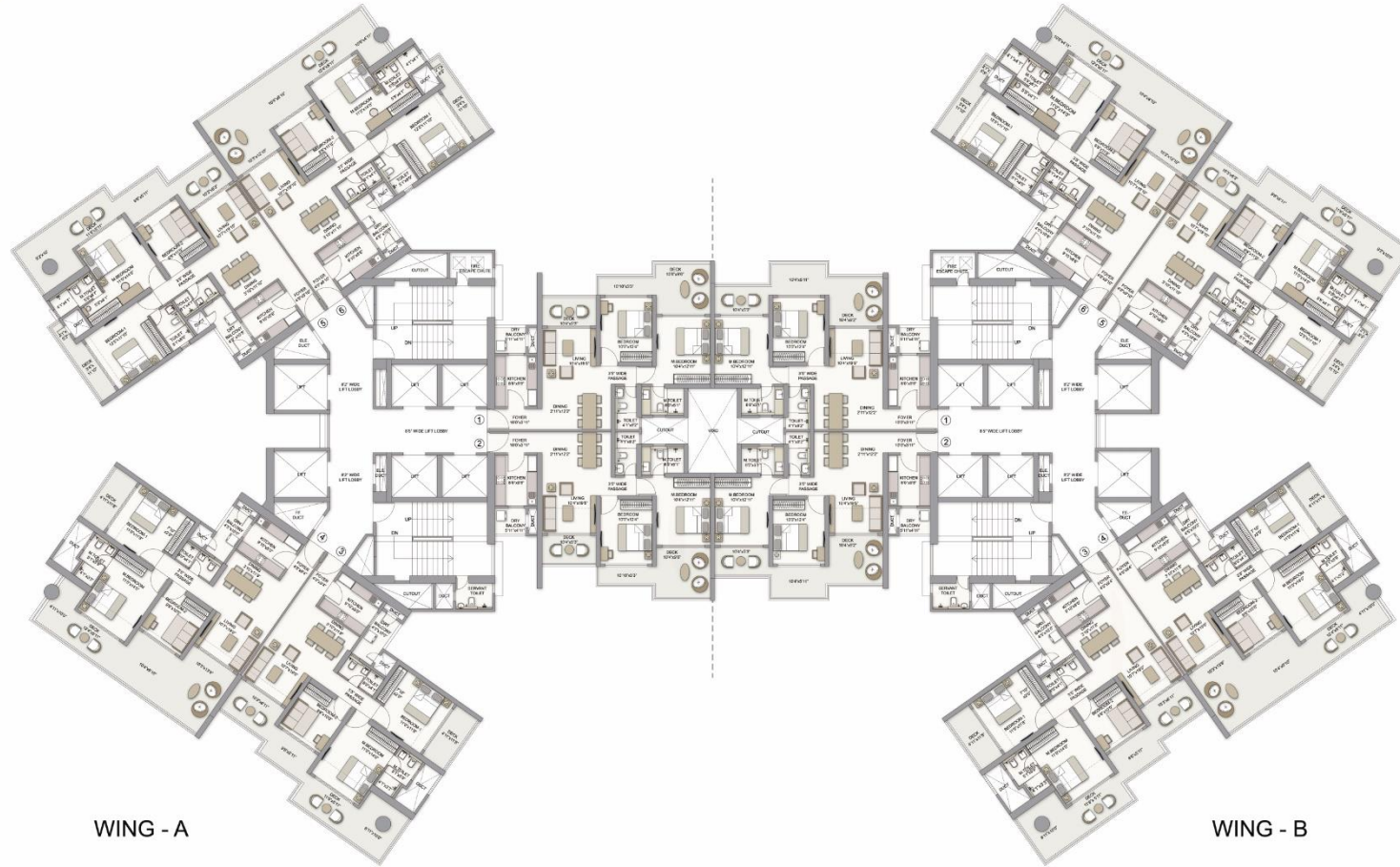
- 22. Dance and Aerobics Studio
- 23. Multi-purpose Studio
(Acoustically treated room
for singing,
playing musical instruments)
- 24. Yoga & Meditation Centre
- 25. Gymnasium
- 26. Banquet Hall
- 27. Business Lounge

A variance of (+/-) 3% in RERA carpet area may occur on account of planning constraints / site conditions / column / finishing. All these dimensions are unfinished structural dimensions. The furniture / fixtures depicted herein are indicative & will not be a part of the standard offering. 1 sq.m. =10.764 sq.ft. The project was approved by the concerned authorities prior to RERA. However, for the purpose of clarity and full disclosure, a detailed area description of the unit is provided herein basis approvals / revised approvals duly obtained from the concerned authorities from time to time. Maharashtra registration no.: P51800005285] Available on website <https://maharera.mahaonline.gov.in>

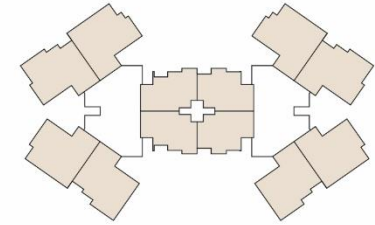
SIESTA
THE PRESTIGE CITY
YOGI HILLS, MULUND

TYPICAL FLOOR PLAN

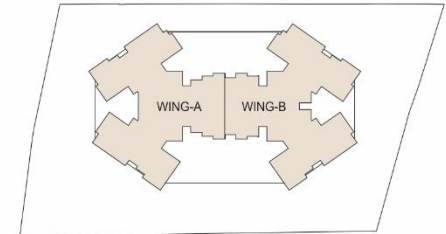
PROFILE-1



UNIT LOCATION



TOWER LOCATION

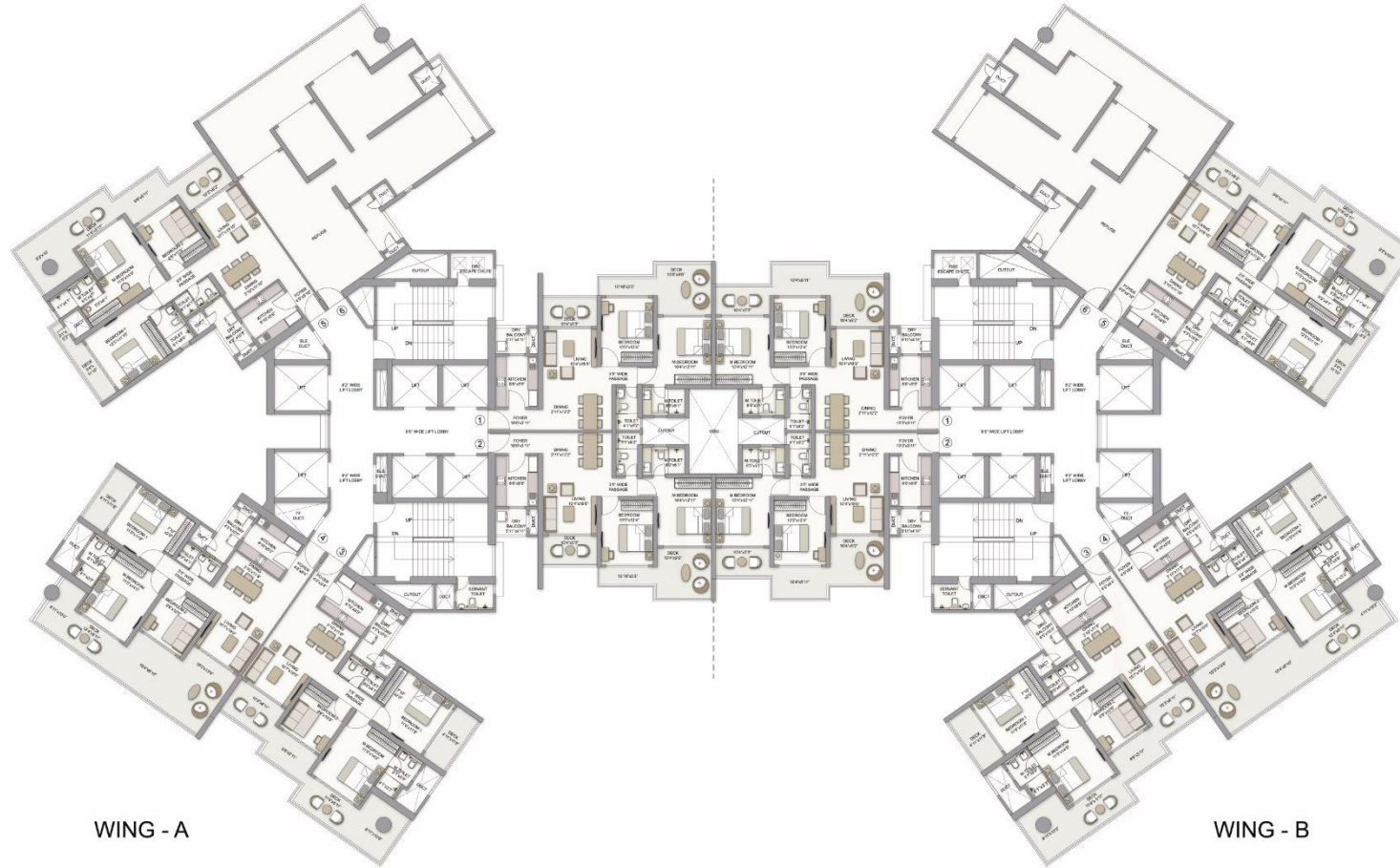


A variance of (+/-) 3% in RERA carpet area may occur on account of planning constraints / site conditions / column / finishing. All these dimensions are unfinished structural dimensions. The furniture / fixtures depicted herein are indicative & will not be a part of the standard offering. 1 sq.m. =10.764 sq.ft. The project was approved by the concerned authorities prior to RERA. However, for the purpose of clarity and full disclosure, a detailed area description of the unit is provided herein basis approvals / revised approvals duly obtained from the concerned authorities from time to time. Maharashtra registration no.: P51800005285] Available on website <https://maharera.mahaonline.gov.in>

SIESTA
THE PRESTIGE CITY
YOGI HILLS, MULUND

REFUGE FLOOR PLAN

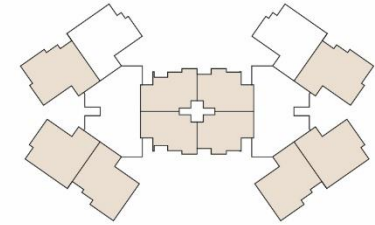
PROFILE-1



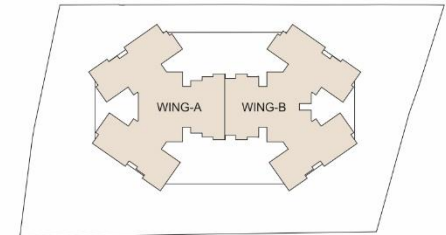
WING - A

WING - B

UNIT LOCATION



TOWER LOCATION



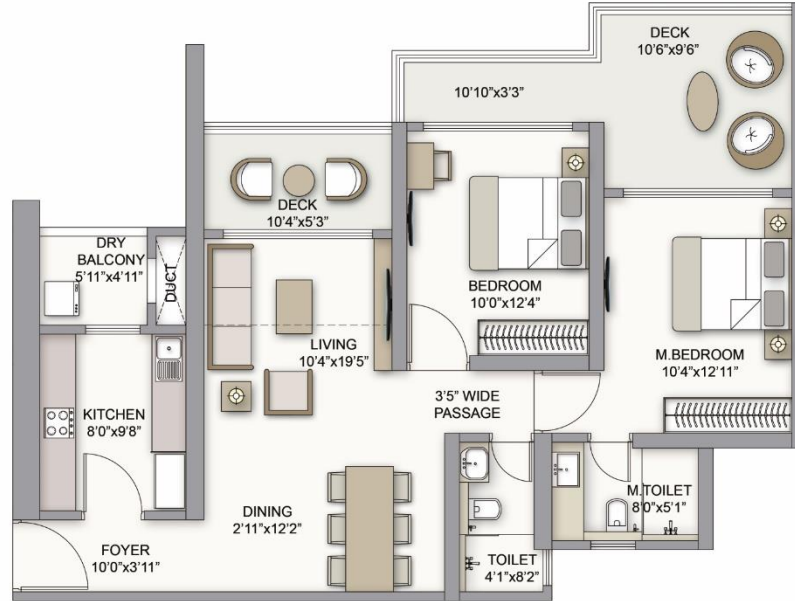
A variance of (+/-) 3% in RERA carpet area may occur on account of planning constraints / site conditions / column / finishing. All these dimensions are unfinished structural dimensions. The furniture / fixtures depicted herein are indicative & will not be a part of the standard offering. 1 sq.m. =10.764 sq.ft. The project was approved by the concerned authorities prior to RERA. However, for the purpose of clarity and full disclosure, a detailed area description of the unit is provided herein basis approvals / revised approvals duly obtained from the concerned authorities from time to time. Maharashtra registration no.: P51800005285] Available on website <https://maharera.mahaonline.gov.in>

SIESTA
THE PRESTIGE CITY
YOGI HILLS, MULUND

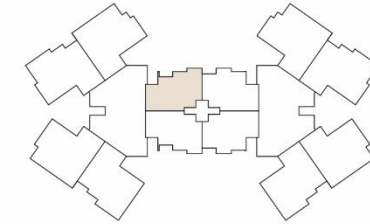
WING - A 2 BED SKY LOUNGE RESIDENCE

Unit 1 - Profile -1-13th, 15th, 17th, 19th, 21st, 23rd, 25th, 27th, 29th,
31st, 33rd, 36th, 38th, 40th, 42nd, 44th, 46th, 48th, 50th, 52nd & 54th Floor Plan

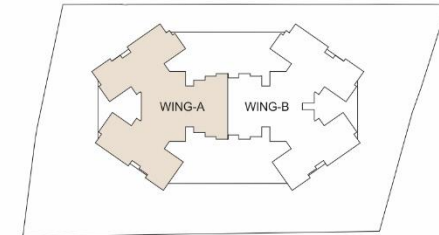
Living Space		Sky Lounge		Total Area (Sq.Ft.)
RERA Carpet Area	Enclosed Balcony	Balcony	Dry Balcony	
750	49	194	31	1024
799		225		



UNIT LOCATION



TOWER LOCATION



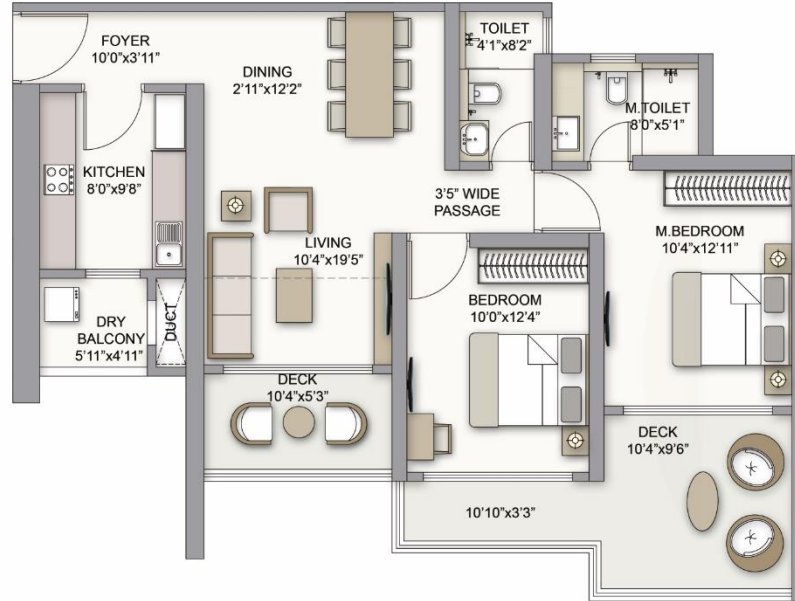
A variance of (+/-) 3% in RERA carpet area may occur on account of planning constraints / site conditions / column / finishing. All these dimensions are unfinished structural dimensions. The furniture / fixtures depicted herein are indicative & will not be a part of the standard offering. 1 sq.m. =10.764 sq.ft. The project was approved by the concerned authorities prior to RERA. However, for the purpose of clarity and full disclosure, a detailed area description of the unit is provided herein basis approvals / revised approvals duly obtained from the concerned authorities from time to time. Maharera registration no.: P51800005285] Available on website <https://maharera.mahaonline.gov.in>

SIESTA
THE PRESTIGE CITY
YOGI HILLS, MULUND

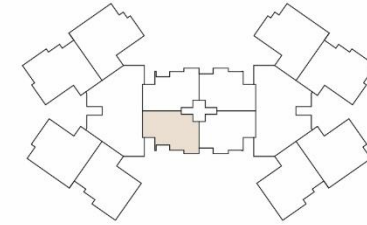
WING - A 2 BED SKY LOUNGE RESIDENCE

Unit 2 - Profile -1-13th, 15th, 17th, 19th, 21st, 23rd, 25th, 27th, 29th,
31st, 33rd, 36th, 38th, 40th, 42nd, 44th, 46th, 48th, 50th, 52nd & 54th Floor Plan

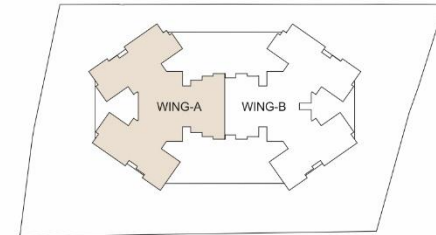
Living Space		Sky Lounge		Total Area (Sq.Ft.)
RERA Carpet Area	Enclosed Balcony	Balcony	Dry Balcony	
750	49	194	31	1024
799		225		



UNIT LOCATION



TOWER LOCATION

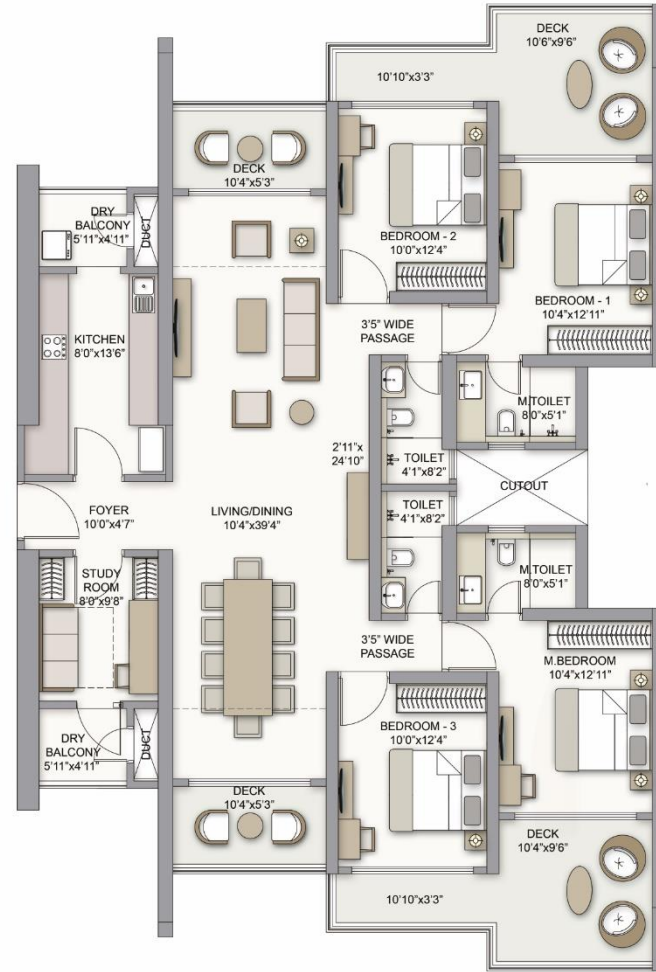


A variance of (+/-) 3% in RERA carpet area may occur on account of planning constraints / site conditions / column / finishing. All these dimensions are unfinished structural dimensions. The furniture / fixtures depicted herein are indicative & will not be a part of the standard offering. 1 sq.m. =10.764 sq.ft. The project was approved by the concerned authorities prior to RERA. However, for the purpose of clarity and full disclosure, a detailed area description of the unit is provided herein basis approvals / revised approvals duly obtained from the concerned authorities from time to time. Maharashtra registration no.: P51800005285] Available on website <https://maharera.mahaonline.gov.in>

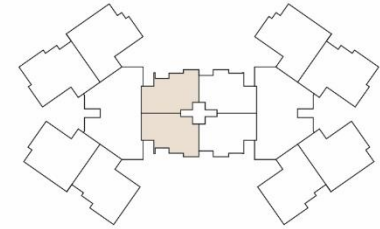
SIESTA
THE PRESTIGE CITY
YOGI HILLS, MULUND

WING - A 2+2 BED SKY LOUNGE RESIDENCE

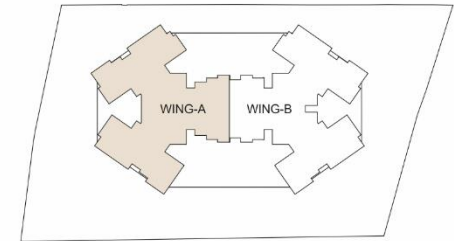
Unit 1 & 2 - Profile -1



UNIT LOCATION



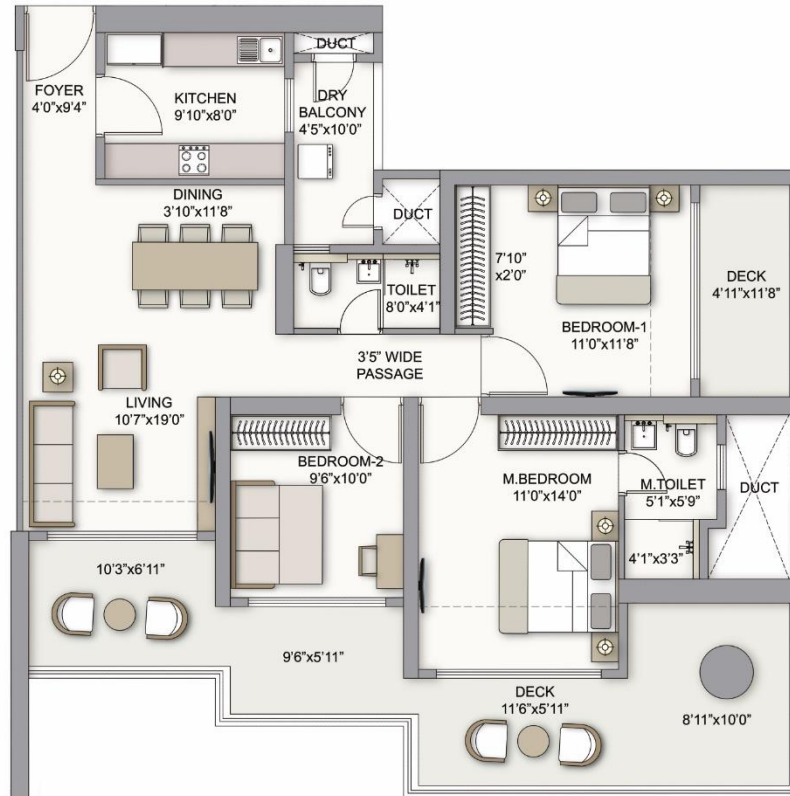
TOWER LOCATION



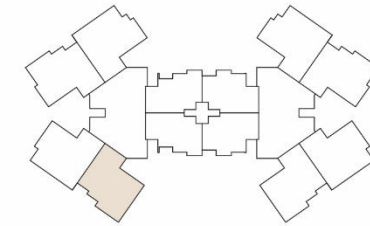
WING - A 3 BED SKY LOUNGE RESIDENCE

Unit 3 - Profile -1-13th, 15th, 17th, 19th, 21st, 23rd, 25th, 27th, 29th, 31st, 33rd, 36th, 38th, 40th, 42nd, 44th, 46th, 48th & 50th Floor Plan

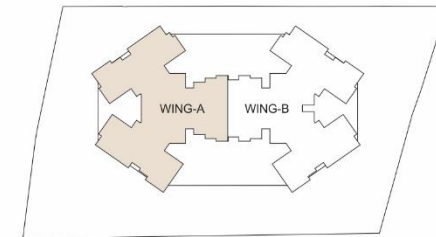
Living Space		Sky Lounge		Total Area (Sq.Ft.)
RERA Carpet Area	Enclosed Balcony	Balcony	Dry Balcony	
861	87	373	46	1367
948		419		



UNIT LOCATION



TOWER LOCATION



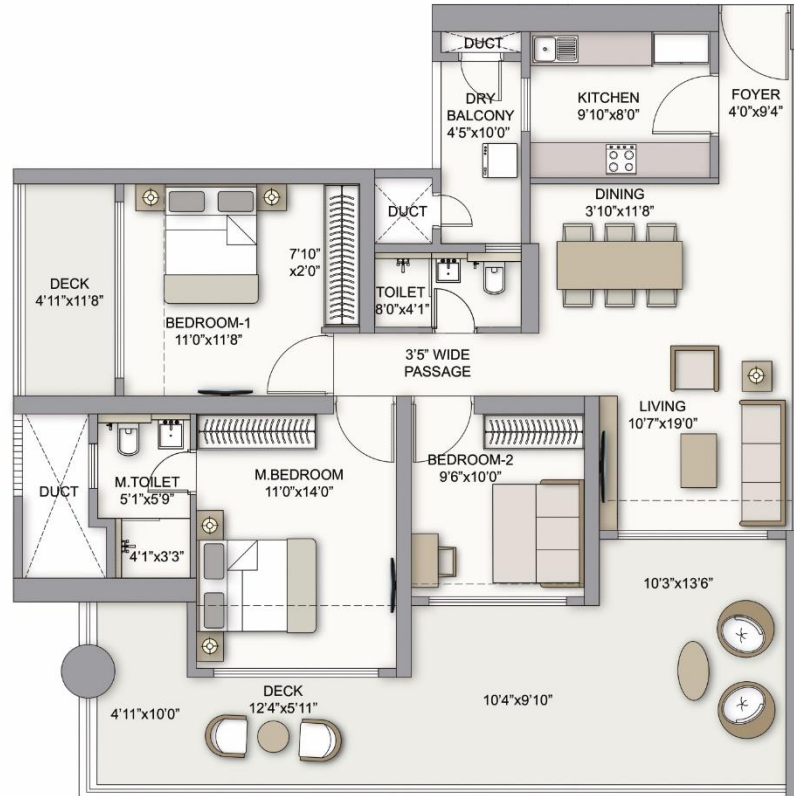
A variance of (+/-) 3% in RERA carpet area may occur on account of planning constraints / site conditions / column / finishing. All these dimensions are unfinished structural dimensions. The furniture / fixtures depicted herein are indicative & will not be a part of the standard offering. 1 sq.m. =10.764 sq.ft. The project was approved by the concerned authorities prior to RERA. However, for the purpose of clarity and full disclosure, a detailed area description of the unit is provided herein basis approvals / revised approvals duly obtained from the concerned authorities from time to time. Maharashtra registration no.: P51800005285] Available on website <https://maharera.mahaonline.gov.in>

SIESTA
THE PRESTIGE CITY
YOGI HILLS, MULUND

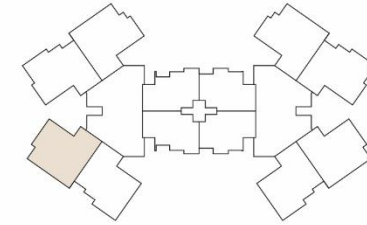
WING - A 3 BED SKY LOUNGE RESIDENCE

Unit 4 - Profile -1-13th, 15th, 17th, 19th, 21st, 23rd, 25th, 27th, 29th, 31st, 33rd, 36th, 38th, 40th, 42nd, 44th, 46th, 48th & 50th Floor Plan

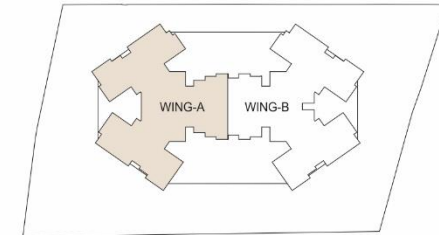
Living Space		Sky Lounge		Total Area (Sq.Ft.)
RERA Carpet Area	Enclosed Balcony	Balcony	Dry Balcony	
861	87	447	46	1441
948		493		



UNIT LOCATION



TOWER LOCATION



A variance of (+/-) 3% in RERA carpet area may occur on account of planning constraints / site conditions / column / finishing. All these dimensions are unfinished structural dimensions. The furniture / fixtures depicted herein are indicative & will not be a part of the standard offering. 1 sq.m. =10.764 sq.ft. The project was approved by the concerned authorities prior to RERA. However, for the purpose of clarity and full disclosure, a detailed area description of the unit is provided herein basis approvals / revised approvals duly obtained from the concerned authorities from time to time. Maharerera registration no.: P51800005285] Available on website <https://maharera.mahaonline.gov.in>

SIESTA
THE PRESTIGE CITY
YOGI HILLS, MULUND

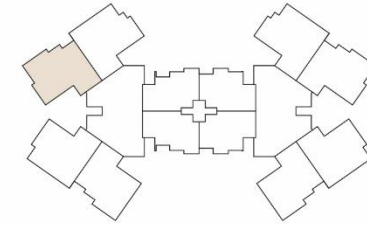
WING - A 3 BED XL SKY LOUNGE RESIDENCE

Unit 5 - Profile -1-13th, 15th, 17th, 19th, 21st, 23rd, 25th, 27th, 29th,
31st, 33rd, 36th, 38th, 40th, 42nd, 44th, 46th, 48th & 50th Floor Plan

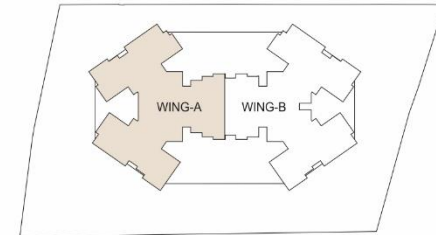
Living Space		Sky Lounge		Total Area (Sq.Ft.)
RERA Carpet Area	Enclosed Balcony	Balcony	Dry Balcony	
996	72	363	49	1480
1068		412		



UNIT LOCATION



TOWER LOCATION



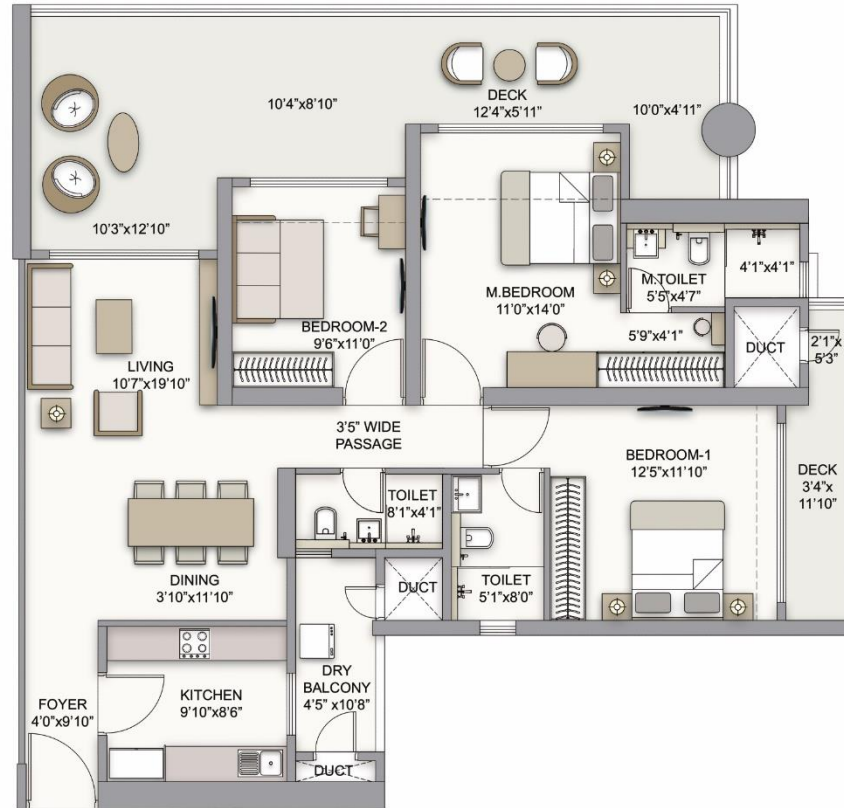
A variance of (+/-) 3% in RERA carpet area may occur on account of planning constraints / site conditions / column / finishing. All these dimensions are unfinished structural dimensions. The furniture / fixtures depicted herein are indicative & will not be a part of the standard offering. 1 sq.m. =10.764 sq.ft. The project was approved by the concerned authorities prior to RERA. However, for the purpose of clarity and full disclosure, a detailed area description of the unit is provided herein basis approvals / revised approvals duly obtained from the concerned authorities from time to time. Maharera registration no.: P51800005285] Available on website <https://maharera.mahaonline.gov.in>

SIESTA
THE PRESTIGE CITY
YOGI HILLS, MULUND

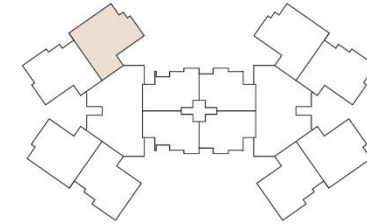
WING - A 3 BED XL SKY LOUNGE RESIDENCE

Unit 6 - Profile -1-13th, 15th, 17th, 19th, 23rd, 25th, 27th, 29th,
31st, 33rd, 36th, 38th, 40th, 44th, 46th, 48th & 50th Floor Plan

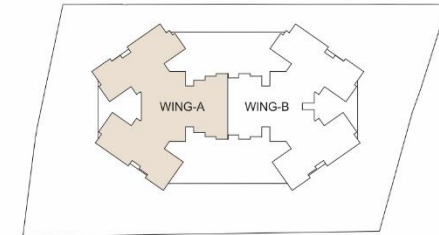
Living Space		Sky Lounge		Total Area (Sq.Ft.)
RERA Carpet Area	Enclosed Balcony	Balcony	Dry Balcony	
990	72	424	49	1535
1062		473		



UNIT LOCATION



TOWER LOCATION



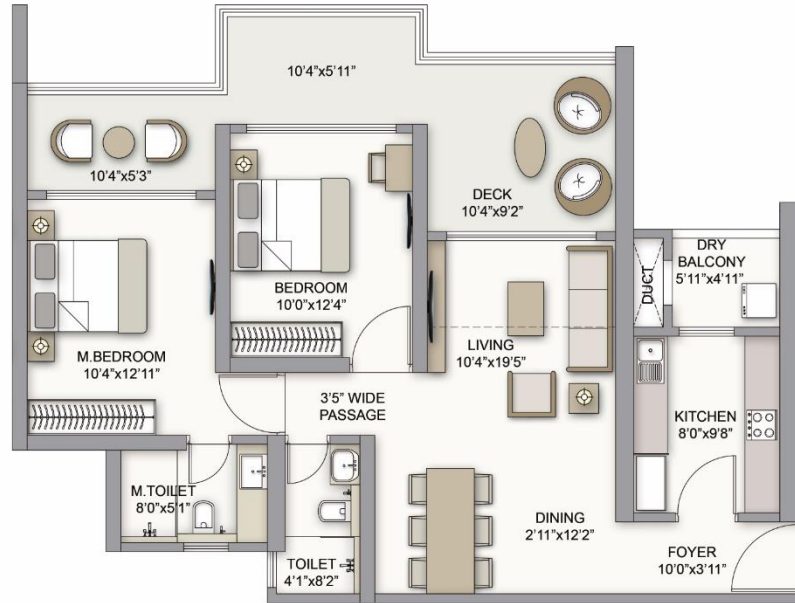
A variance of (+/-) 3% in RERA carpet area may occur on account of planning constraints / site conditions / column / finishing. All these dimensions are unfinished structural dimensions. The furniture / fixtures depicted herein are indicative & will not be a part of the standard offering. 1 sq.m. =10.764 sq.ft. The project was approved by the concerned authorities prior to RERA. However, for the purpose of clarity and full disclosure, a detailed area description of the unit is provided herein basis approvals / revised approvals duly obtained from the concerned authorities from time to time. Maharashtra registration no.: P51800005285] Available on website <https://maharera.mahaonline.gov.in>

SIESTA
THE PRESTIGE CITY
YOGI HILLS, MULUND

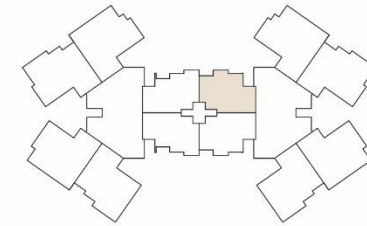
WING - B 2 BED SKY LOUNGE RESIDENCE

Unit 1 - Profile -1-13th, 15th, 17th, 19th, 21st, 23rd, 25th, 27th, 29th,
31st, 33rd, 36th, 38th, 40th, 42nd, 44th, 46th, 48th, 50th, 52nd & 54th Floor Plan

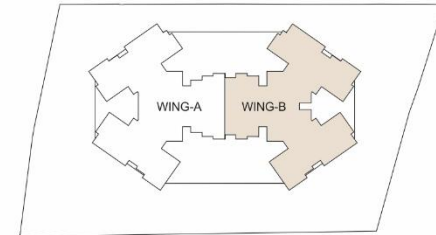
Living Space		Sky Lounge		Total Area (Sq.Ft.)
RERA Carpet Area	Enclosed Balcony	Balcony	Dry Balcony	
751	49	219	31	1050
800		250		



UNIT LOCATION



TOWER LOCATION



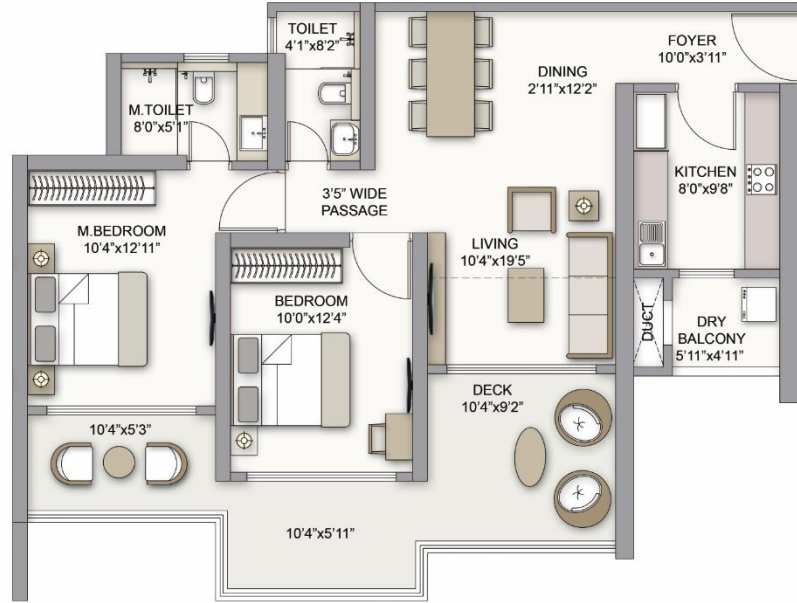
A variance of (+/-) 3% in RERA carpet area may occur on account of planning constraints / site conditions / column / finishing. All these dimensions are unfinished structural dimensions. The furniture / fixtures depicted herein are indicative & will not be a part of the standard offering. 1 sq.m. =10.764 sq.ft. The project was approved by the concerned authorities prior to RERA. However, for the purpose of clarity and full disclosure, a detailed area description of the unit is provided herein basis approvals / revised approvals duly obtained from the concerned authorities from time to time. Maharashtra registration no.: P51800005285] Available on website <https://maharera.mahaonline.gov.in>

SIESTA
THE PRESTIGE CITY
YOGI HILLS, MULUND

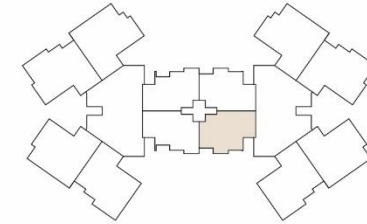
WING - B 2 BED SKY LOUNGE RESIDENCE

Unit 2 - Profile -1-13th,15th,17th, 19th, 21st, 23rd, 25th, 27th, 29th,
31st, 33rd, 36th, 38th, 40th, 42nd, 44th, 46th, 48th, 50th, 52nd & 54th Floor Plan

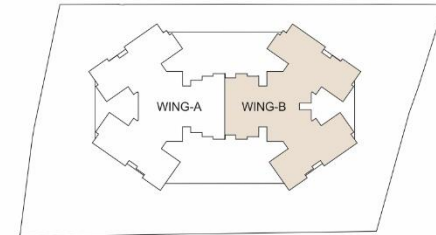
Living Space		Sky Lounge		Total Area (Sq.Ft.)
RERA Carpet Area	Enclosed Balcony	Balcony	Dry Balcony	
751	49	219	31	1050
800		250		



UNIT LOCATION



TOWER LOCATION



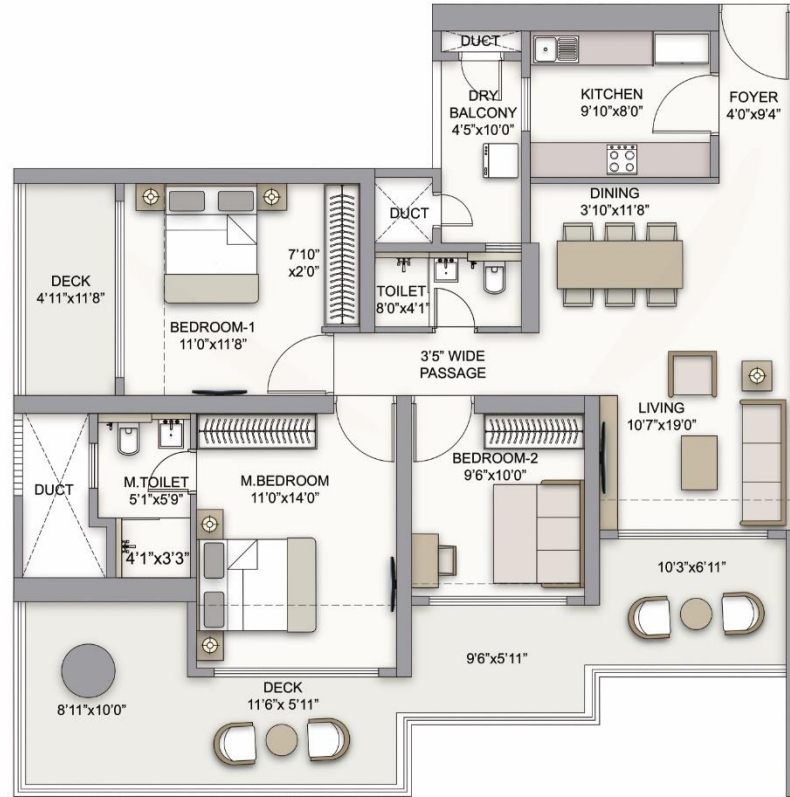
A variance of (+/-) 3% in RERA carpet area may occur on account of planning constraints / site conditions / column / finishing. All these dimensions are unfinished structural dimensions. The furniture / fixtures depicted herein are indicative & will not be a part of the standard offering. 1 sq.m. =10.764 sq.ft. The project was approved by the concerned authorities prior to RERA. However, for the purpose of clarity and full disclosure, a detailed area description of the unit is provided herein basis approvals / revised approvals duly obtained from the concerned authorities from time to time. Maharashtra registration no.: P51800005285] Available on website <https://maharera.mahaonline.gov.in>

SIESTA
THE PRESTIGE CITY
YOGI HILLS, MULUND

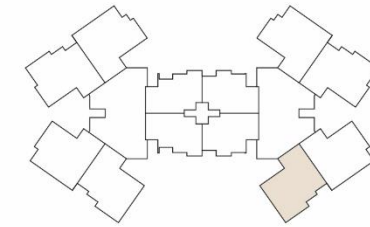
WING - B 3 BED SKY LOUNGE RESIDENCE

Unit 3 - Profile -1-13th, 15th, 17th, 19th, 21st, 23rd, 25th, 27th, 29th, 31st, 33rd, 36th, 38th, 40th, 42nd, 44th, 46th, 48th & 50th Floor Plan

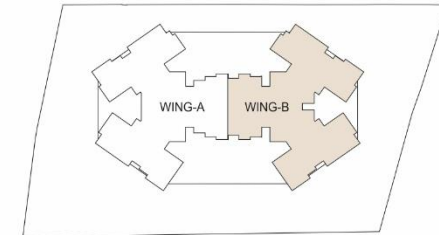
Living Space		Sky Lounge		Total Area (Sq.Ft.)
RERA Carpet Area	Enclosed Balcony	Balcony	Dry Balcony	
861	87	373	46	1367
948		419		



UNIT LOCATION



TOWER LOCATION



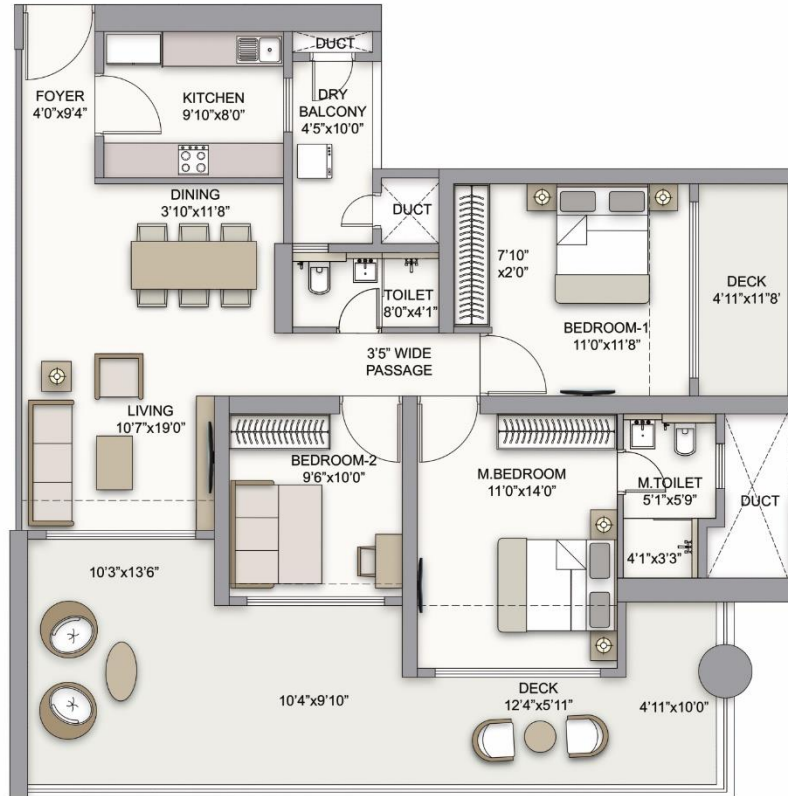
A variance of (+/-) 3% in RERA carpet area may occur on account of planning constraints / site conditions / column / finishing. All these dimensions are unfinished structural dimensions. The furniture / fixtures depicted herein are indicative & will not be a part of the standard offering. 1 sq.m. =10.764 sq.ft. The project was approved by the concerned authorities prior to RERA. However, for the purpose of clarity and full disclosure, a detailed area description of the unit is provided herein basis approvals / revised approvals duly obtained from the concerned authorities from time to time. Maharashtra registration no.: P51800005285] Available on website <https://maharera.mahaonline.gov.in>

SIESTA
THE PRESTIGE CITY
YOGI HILLS, MULUND

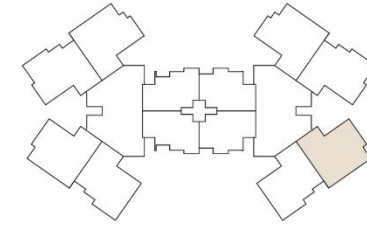
WING - B 3 BED SKY LOUNGE RESIDENCE

Unit 4 - Profile -1-13th, 15th, 17th, 19th, 21st, 23rd, 25th, 27th, 29th, 31st, 33rd, 36th, 38th, 40th, 42nd, 44th, 46th, 48th & 50th Floor Plan

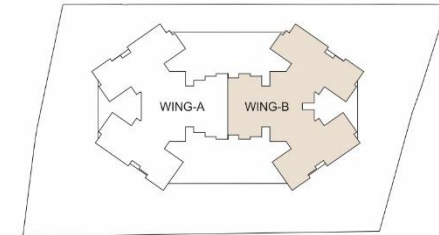
Living Space		Sky Lounge		Total Area (Sq.Ft.)
RERA Carpet Area	Enclosed Balcony	Balcony	Dry Balcony	
861	87	447	46	1441
948		493		



UNIT LOCATION



TOWER LOCATION



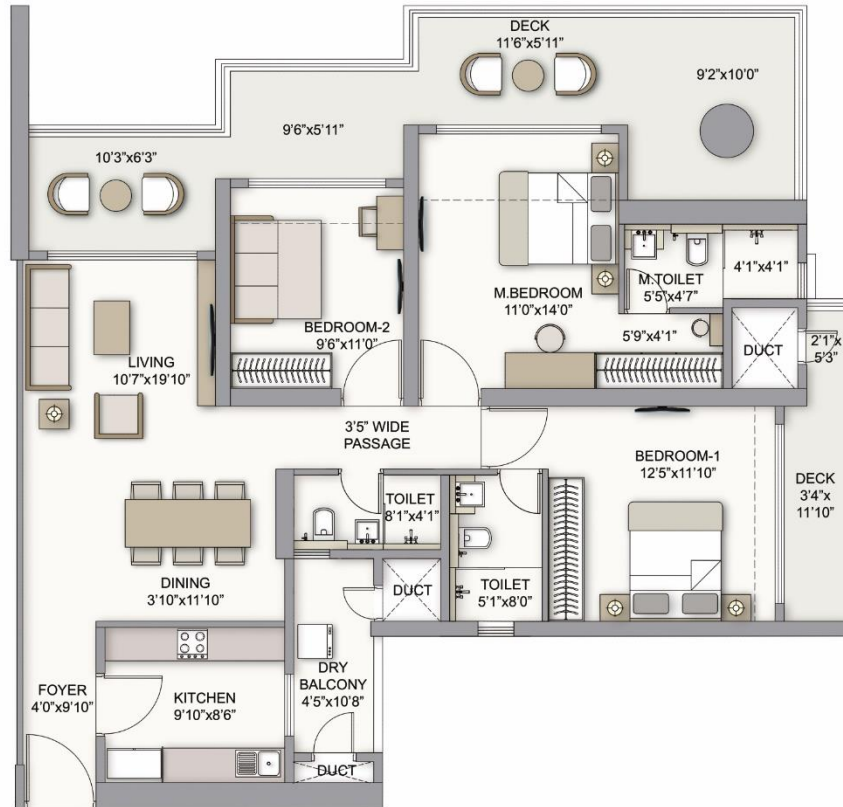
A variance of (+/-) 3% in RERA carpet area may occur on account of planning constraints / site conditions / column / finishing. All these dimensions are unfinished structural dimensions. The furniture / fixtures depicted herein are indicative & will not be a part of the standard offering. 1 sq.m. =10.764 sq.ft. The project was approved by the concerned authorities prior to RERA. However, for the purpose of clarity and full disclosure, a detailed area description of the unit is provided herein basis approvals / revised approvals duly obtained from the concerned authorities from time to time. Maharashtra registration no.: P51800005285] Available on website <https://maharera.mahaonline.gov.in>

SIESTA
THE PRESTIGE CITY
YOGI HILLS, MULUND

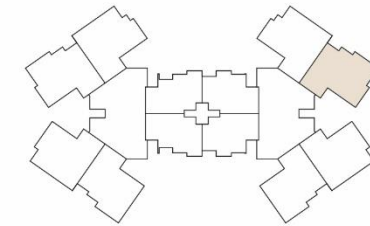
WING - B 3 BED XL SKY LOUNGE RESIDENCE

Unit 5 - Profile -1-13th, 15th, 17th, 19th, 21st, 23rd, 25th, 27th, 29th, 31st, 33rd, 36th, 38th, 40th, 42nd, 44th, 46th, 48th & 50th Floor Plan

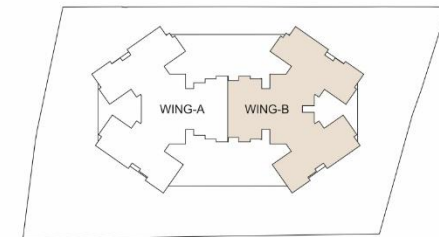
Living Space		Sky Lounge		Total Area (Sq.Ft.)
RERA Carpet Area	Enclosed Balcony	Balcony	Dry Balcony	
996	72	363	49	1480
1068		412		



UNIT LOCATION



TOWER LOCATION



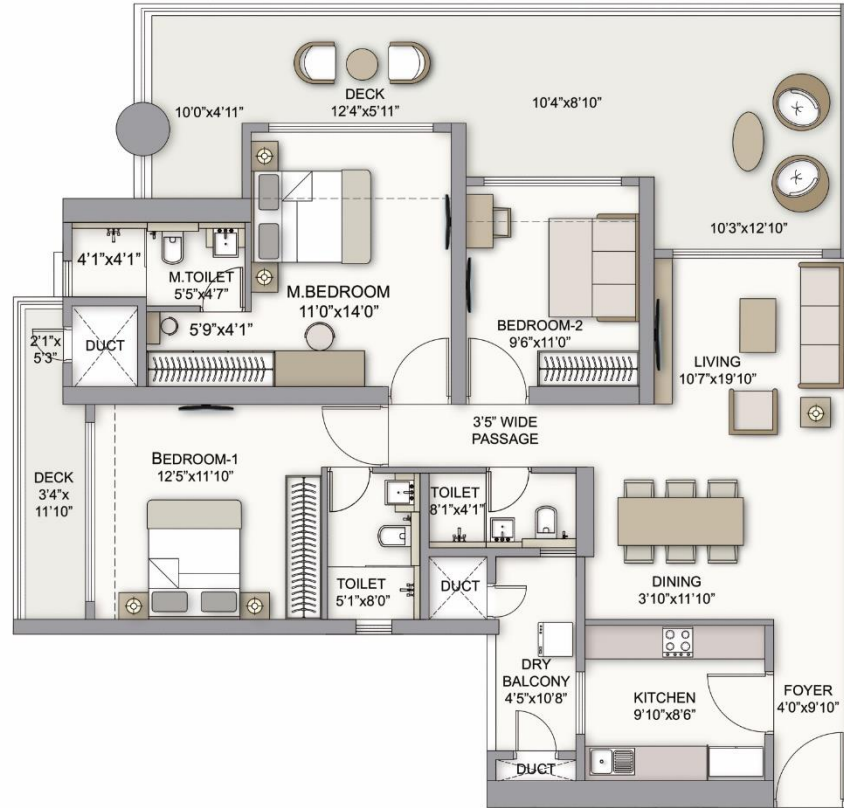
A variance of (+/-) 3% in RERA carpet area may occur on account of planning constraints / site conditions / column / finishing. All these dimensions are unfinished structural dimensions. The furniture / fixtures depicted herein are indicative & will not be a part of the standard offering. 1 sq.m. =10.764 sq.ft. The project was approved by the concerned authorities prior to RERA. However, for the purpose of clarity and full disclosure, a detailed area description of the unit is provided herein basis approvals / revised approvals duly obtained from the concerned authorities from time to time. Maharashtra registration no.: P51800005285] Available on website <https://maharera.mahaonline.gov.in>

SIESTA
THE PRESTIGE CITY
YOGI HILLS, MULUND

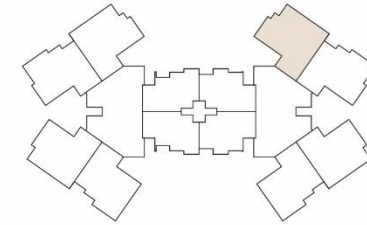
WING - B 3 BED XL SKY LOUNGE RESIDENCE

Unit 6 - Profile -1-13th, 15th, 17th, 19th, 23rd, 25th, 27th, 29th, 31st, 33rd, 36th, 38th, 40th, 44th, 46th, 48th & 50th Floor Plan

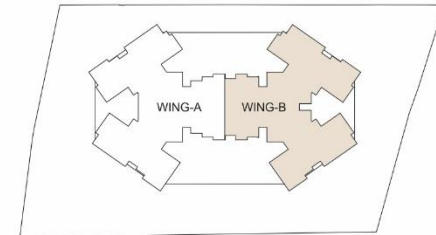
Living Space		Sky Lounge		Total Area (Sq.Ft.)
RERA Carpet Area	Enclosed Balcony	Balcony	Dry Balcony	
990	72	424	49	1535
1062		473		



UNIT LOCATION



TOWER LOCATION

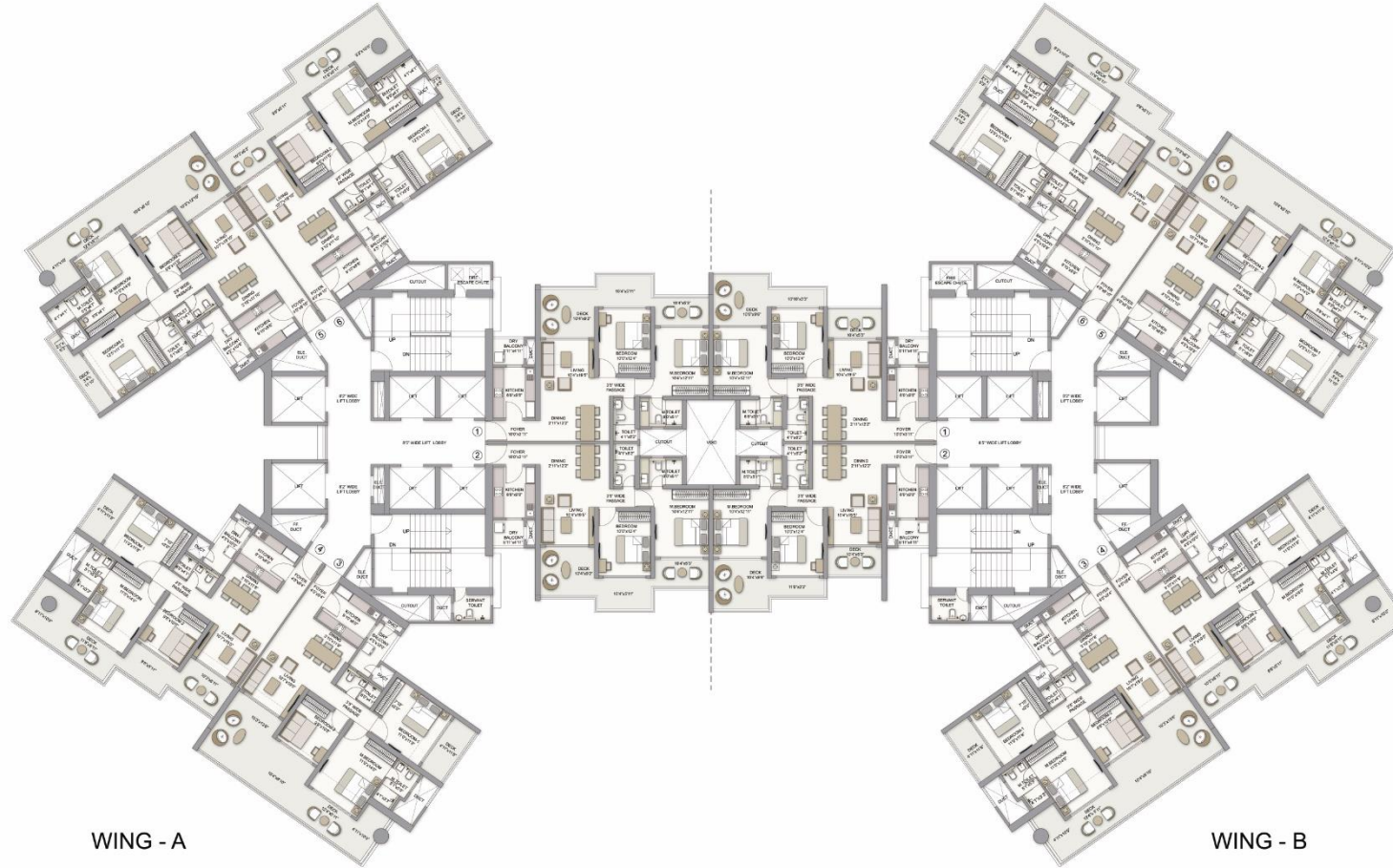


A variance of (+/-) 3% in RERA carpet area may occur on account of planning constraints / site conditions / column / finishing. All these dimensions are unfinished structural dimensions. The furniture / fixtures depicted herein are indicative & will not be a part of the standard offering. 1 sq.m. =10.764 sq.ft. The project was approved by the concerned authorities prior to RERA. However, for the purpose of clarity and full disclosure, a detailed area description of the unit is provided herein basis approvals / revised approvals duly obtained from the concerned authorities from time to time. Maharashtra registration no.: P51800005285] Available on website <https://maharera.mahaonline.gov.in>

SIESTA
THE PRESTIGE CITY
YOGI HILLS, MULUND

TYPICAL FLOOR PLAN

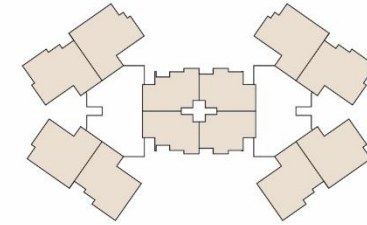
PROFILE-2



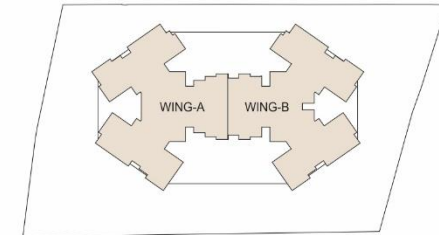
WING - A

WING - B

UNIT LOCATION



TOWER LOCATION

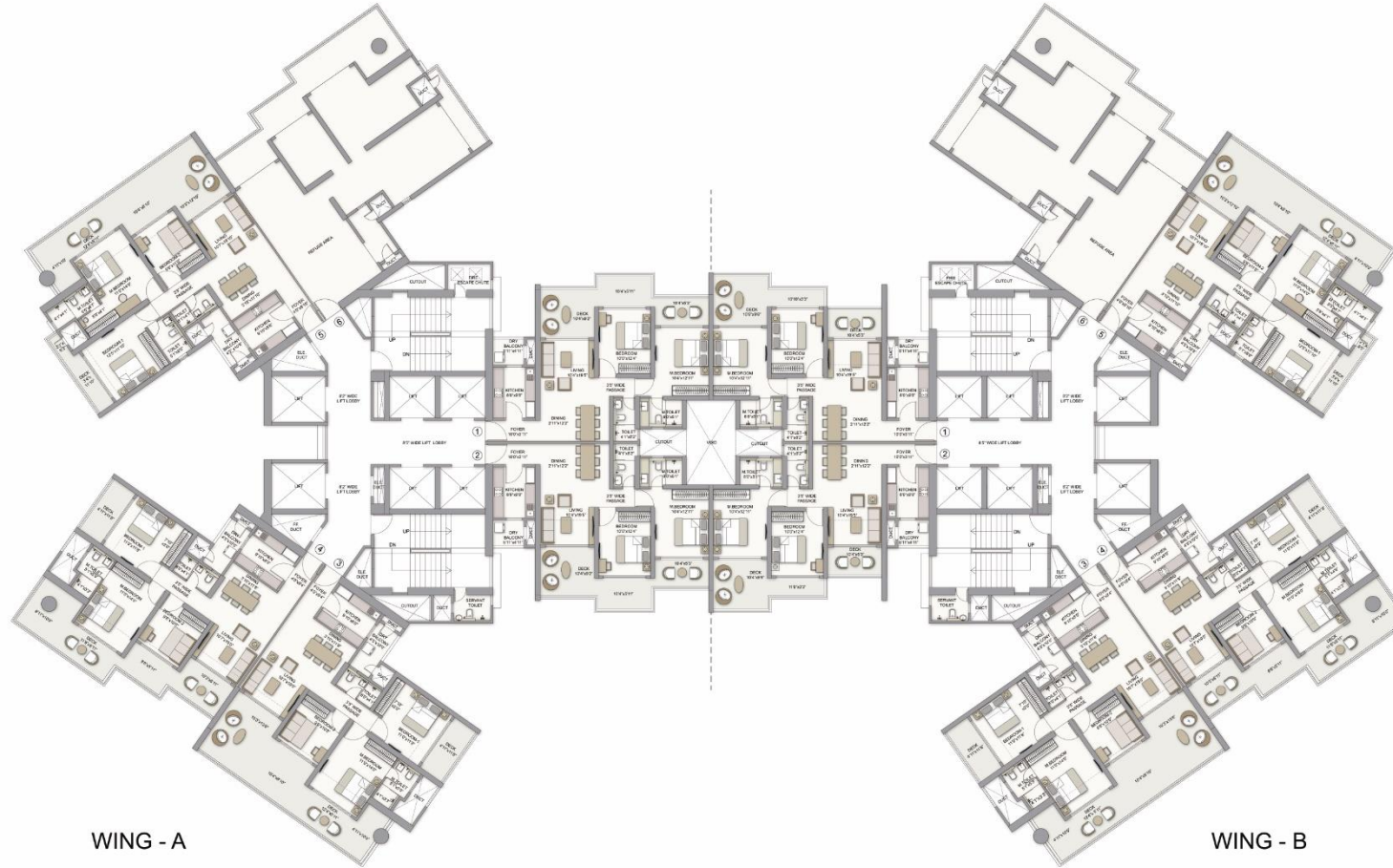


A variance of (+/-) 3% in RERA carpet area may occur on account of planning constraints / site conditions / column / finishing. All these dimensions are unfinished structural dimensions. The furniture / fixtures depicted herein are indicative & will not be a part of the standard offering. 1 sq.m. =10.764 sq.ft. The project was approved by the concerned authorities prior to RERA. However, for the purpose of clarity and full disclosure, a detailed area description of the unit is provided herein basis approvals / revised approvals duly obtained from the concerned authorities from time to time. Maharashtra registration no.: P51800005285] Available on website <https://maharera.mahaonline.gov.in>

SIESTA
THE PRESTIGE CITY
YOGI HILLS, MULUND

REFUGE FLOOR PLAN

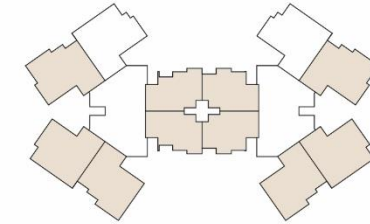
PROFILE-2



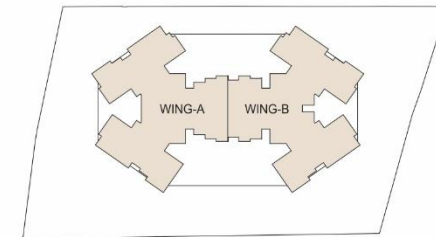
WING - A

WING - B

UNIT LOCATION



TOWER LOCATION

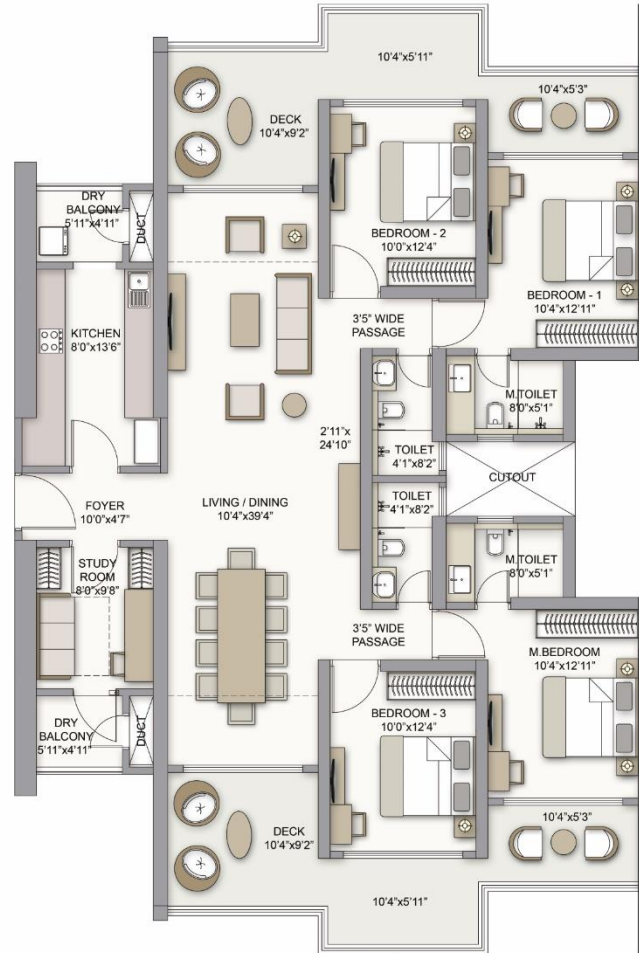


A variance of (+/-) 3% in RERA carpet area may occur on account of planning constraints / site conditions / column / finishing. All these dimensions are unfinished structural dimensions. The furniture / fixtures depicted herein are indicative & will not be a part of the standard offering. 1 sq.m. =10.764 sq.ft. The project was approved by the concerned authorities prior to RERA. However, for the purpose of clarity and full disclosure, a detailed area description of the unit is provided herein basis approvals / revised approvals duly obtained from the concerned authorities from time to time. Maharashtra registration no.: P51800005285] Available on website <https://maharera.mahaonline.gov.in>

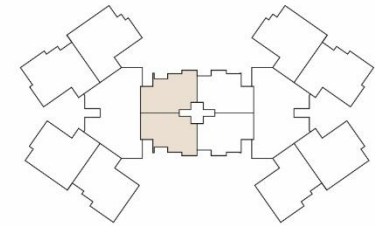
SIESTA
THE PRESTIGE CITY
YOGI HILLS, MULUND

WING - A 2+2 BED SKY LOUNGE RESIDENCE

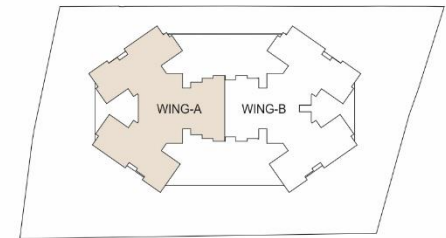
Unit 1 & 2 - Profile -2



UNIT LOCATION



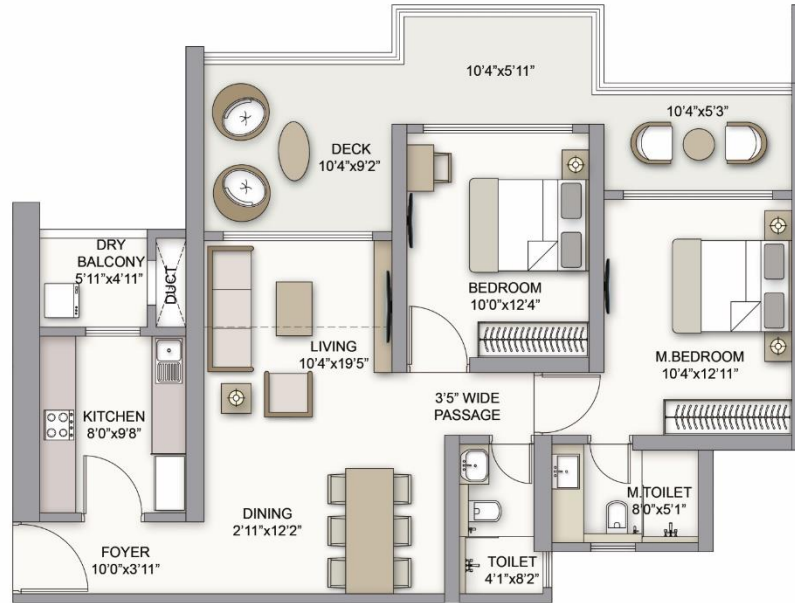
TOWER LOCATION



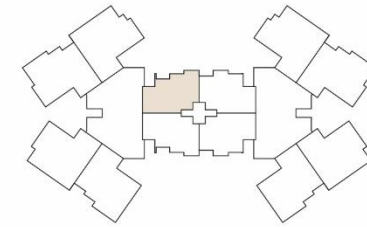
WING - A 2 BED SKY LOUNGE RESIDENCE

Unit 1 - Profile -2-14th, 16th, 18th, 20th, 22nd, 24th, 26th, 28th, 30th, 32nd, 34th, 37th, 39th, 41st, 43rd, 45th, 47th, 49th, 51st & 53rd Floor Plan

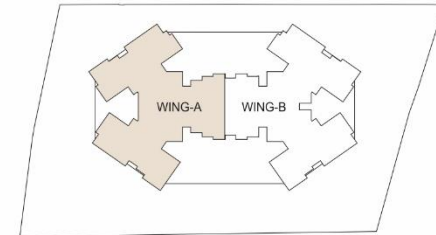
Living Space		Sky Lounge		Total Area (Sq.Ft.)
RERA Carpet Area	Enclosed Balcony	Balcony	Dry Balcony	
751	49	219	31	1050
800		250		



UNIT LOCATION



TOWER LOCATION



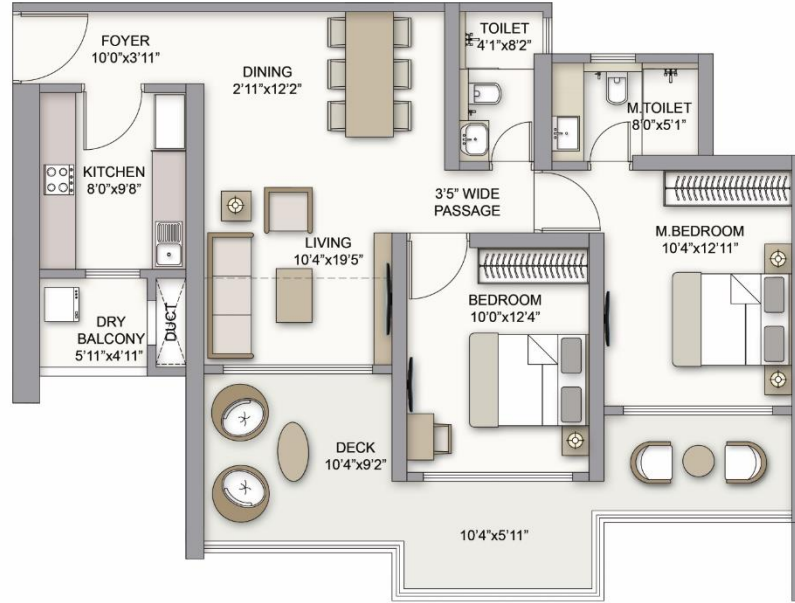
A variance of (+/-) 3% in RERA carpet area may occur on account of planning constraints / site conditions / column / finishing. All these dimensions are unfinished structural dimensions. The furniture / fixtures depicted herein are indicative & will not be a part of the standard offering. 1 sq.m. =10.764 sq.ft. The project was approved by the concerned authorities prior to RERA. However, for the purpose of clarity and full disclosure, a detailed area description of the unit is provided herein basis approvals / revised approvals duly obtained from the concerned authorities from time to time. Maharashtra registration no.: P51800005285] Available on website <https://maharera.mahaonline.gov.in>

SIESTA
THE PRESTIGE CITY
YOGI HILLS, MULUND

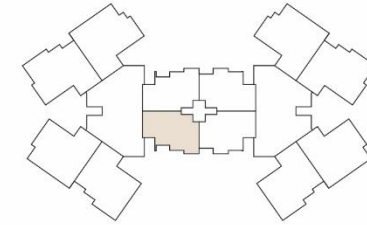
WING - A 2 BED SKY LOUNGE RESIDENCE

Unit 2 - Profile -2-14th, 16th, 18th, 20th, 22nd, 24th, 26th, 28th, 30th, 32nd, 34th, 37th, 39th, 41st, 43rd, 45th, 47th, 49th, 51st & 53rd Floor Plan

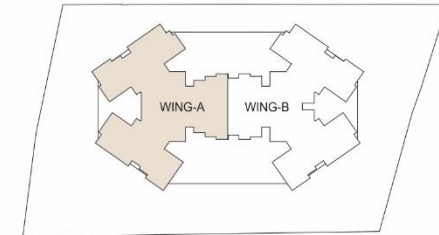
Living Space		Sky Lounge		Total Area (Sq.Ft.)
RERA Carpet Area	Enclosed Balcony	Balcony	Dry Balcony	
751	49	219	31	1050
800		250		



UNIT LOCATION



TOWER LOCATION



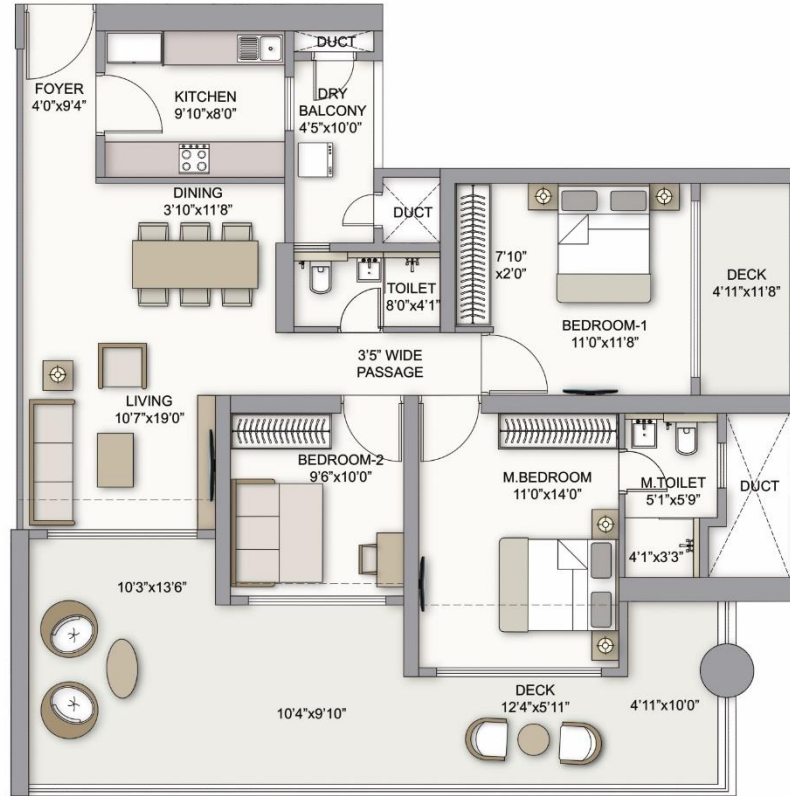
A variance of (+/-) 3% in RERA carpet area may occur on account of planning constraints / site conditions / column / finishing. All these dimensions are unfinished structural dimensions. The furniture / fixtures depicted herein are indicative & will not be a part of the standard offering. 1 sq.m. =10.764 sq.ft. The project was approved by the concerned authorities prior to RERA. However, for the purpose of clarity and full disclosure, a detailed area description of the unit is provided herein basis approvals / revised approvals duly obtained from the concerned authorities from time to time. Maharashtra registration no.: P51800005285] Available on website <https://maharera.mahaonline.gov.in>

SIESTA
THE PRESTIGE CITY
YOGI HILLS, MULUND

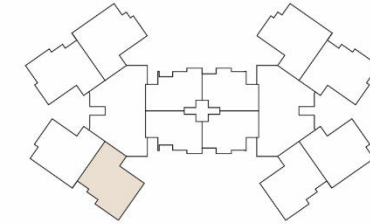
WING - A 3 BED SKY LOUNGE RESIDENCE

Unit 3 - Profile -2-14th, 16th, 18th, 20th, 22nd, 24th, 26th, 28th, 30th, 32nd, 34th, 37th, 39th, 41st, 43rd, 45th, 47th, 49th & 51st Floor Plan

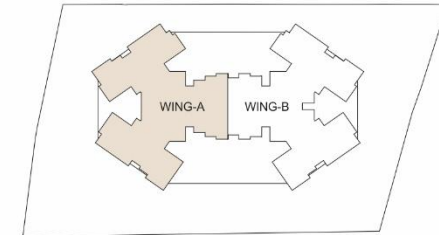
Living Space		Sky Lounge		Total Area (Sq.Ft.)
RERA Carpet Area	Enclosed Balcony	Balcony	Dry Balcony	
861	87	447	46	1441
948		493		



UNIT LOCATION



TOWER LOCATION



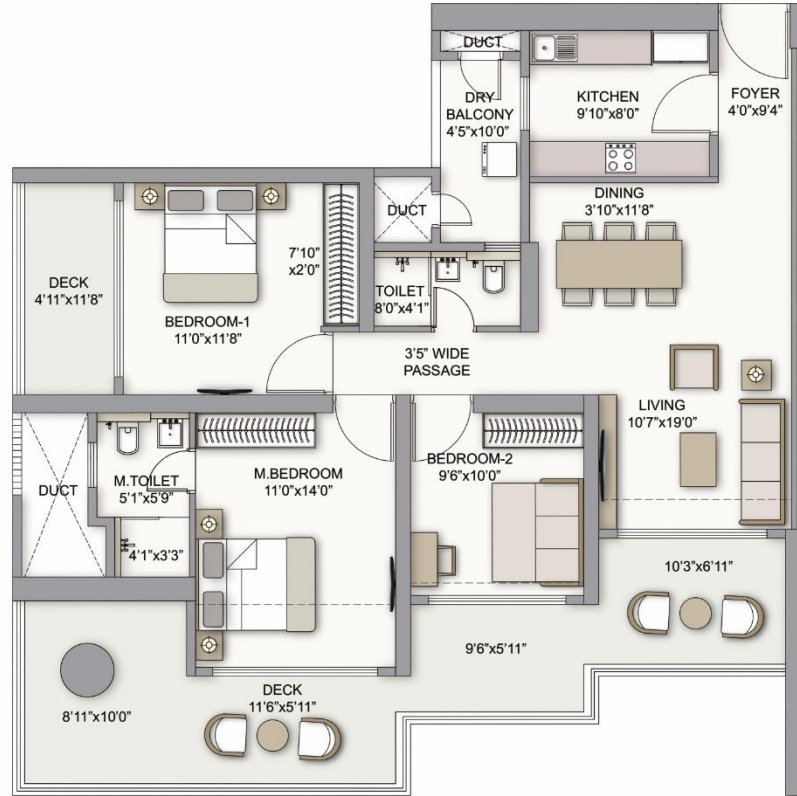
A variance of (+/-) 3% in RERA carpet area may occur on account of planning constraints / site conditions / column / finishing. All these dimensions are unfinished structural dimensions. The furniture / fixtures depicted herein are indicative & will not be a part of the standard offering. 1 sq.m. =10.764 sq.ft. The project was approved by the concerned authorities prior to RERA. However, for the purpose of clarity and full disclosure, a detailed area description of the unit is provided herein basis approvals / revised approvals duly obtained from the concerned authorities from time to time. Maharera registration no.: P51800005285] Available on website <https://maharera.mahaonline.gov.in>

SIESTA
THE PRESTIGE CITY
YOGI HILLS, MULUND

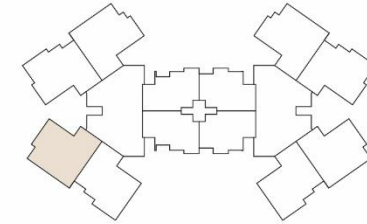
WING - A 3 BED SKY LOUNGE RESIDENCE

Unit 4 - Profile -2-14th, 16th, 18th, 20th, 22nd, 24th, 26th, 28th, 30th, 32nd, 34th, 37th, 39th, 41st, 43rd, 45th, 47th, 49th & 51st Floor Plan

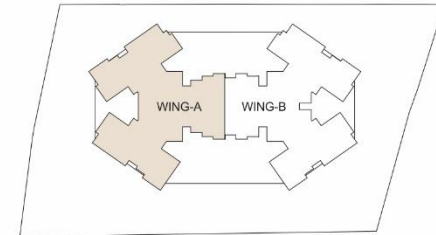
Living Space		Sky Lounge		Total Area (Sq.Ft.)
RERA Carpet Area	Enclosed Balcony	Balcony	Dry Balcony	
861	87	373	46	1367
948		419		



UNIT LOCATION



TOWER LOCATION



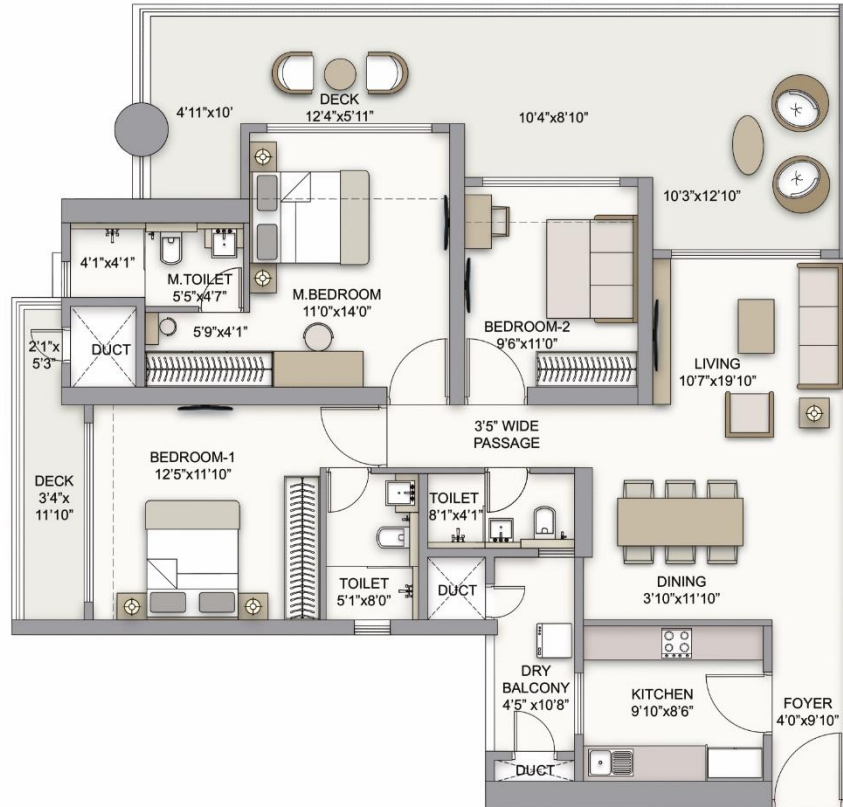
A variance of (+/-) 3% in RERA carpet area may occur on account of planning constraints / site conditions / column / finishing. All these dimensions are unfinished structural dimensions. The furniture / fixtures depicted herein are indicative & will not be a part of the standard offering. 1 sq.m. =10.764 sq.ft. The project was approved by the concerned authorities prior to RERA. However, for the purpose of clarity and full disclosure, a detailed area description of the unit is provided herein basis approvals / revised approvals duly obtained from the concerned authorities from time to time. Maharerera registration no.: P51800005285] Available on website <https://maharera.mahaonline.gov.in>

SIESTA
THE PRESTIGE CITY
YOGI HILLS, MULUND

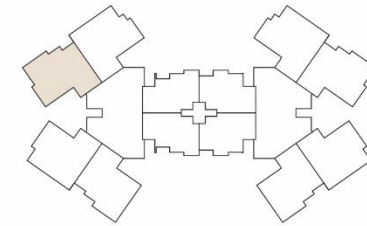
WING - A 3 BED XL SKY LOUNGE RESIDENCE

Unit 5 - Profile -2-14th, 16th, 18th, 20th, 22nd, 24th, 26th, 28th, 30th, 32nd, 34th, 37th, 39th, 41st, 43rd, 45th, 47th, 49th & 51st Floor Plan

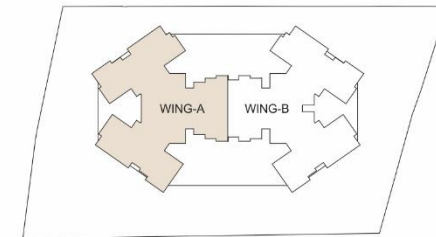
Living Space		Sky Lounge		Total Area (Sq.Ft.)
RERA Carpet Area	Enclosed Balcony	Balcony	Dry Balcony	
990	72	424	49	1535
1062		473		



UNIT LOCATION



TOWER LOCATION



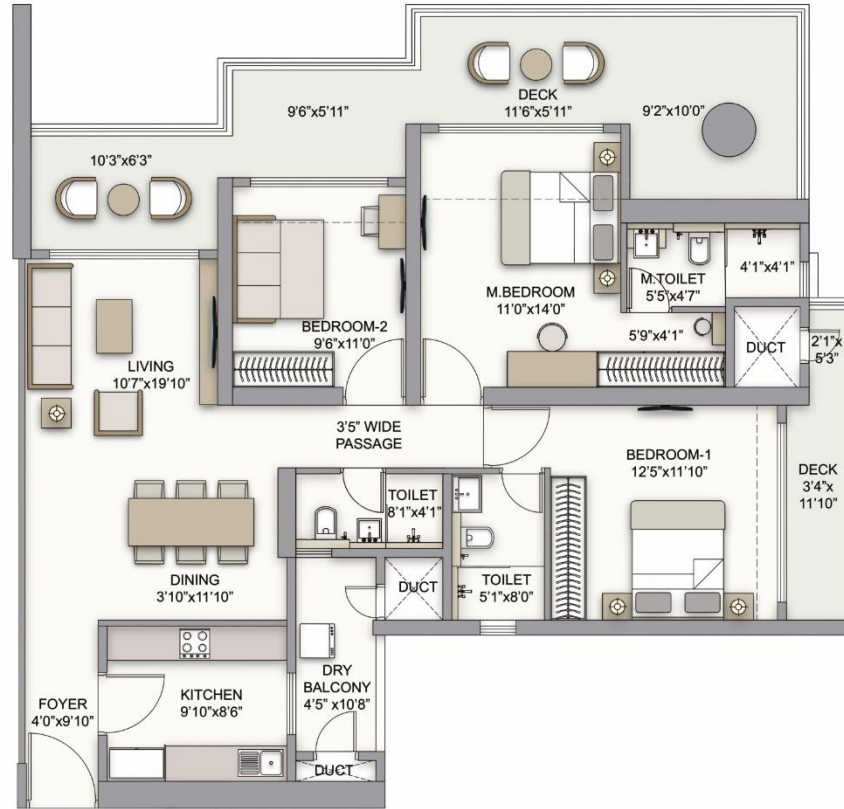
A variance of (+/-) 3% in RERA carpet area may occur on account of planning constraints / site conditions / column / finishing. All these dimensions are unfinished structural dimensions. The furniture / fixtures depicted herein are indicative & will not be a part of the standard offering. 1 sq.m. =10.764 sq.ft. The project was approved by the concerned authorities prior to RERA. However, for the purpose of clarity and full disclosure, a detailed area description of the unit is provided herein basis approvals / revised approvals duly obtained from the concerned authorities from time to time. Maharera registration no.: P51800005285] Available on website <https://maharera.mahaonline.gov.in>

SIESTA
THE PRESTIGE CITY
YOGI HILLS, MULUND

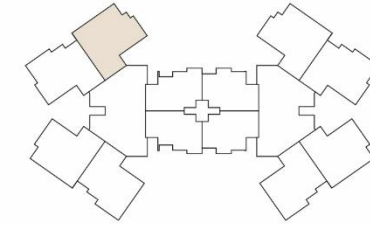
WING - A 3 BED XL SKY LOUNGE RESIDENCE

Unit 6 - Profile -2-16th, 18th, 20th, 22nd, 24th, 26th, 30th,
32nd, 34th, 37th, 39th, 41st, 43rd, 45th, 47th & 51st Floor Plan

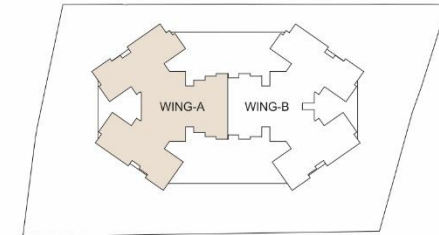
Living Space		Sky Lounge		Total Area (Sq.Ft.)
RERA Carpet Area	Enclosed Balcony	Balcony	Dry Balcony	
996	72	363	49	1480
1068		412		



UNIT LOCATION



TOWER LOCATION



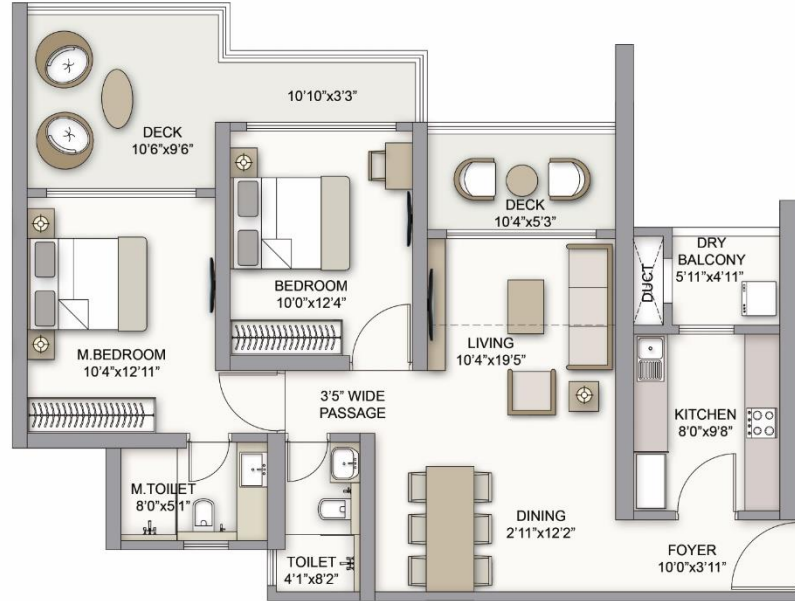
A variance of (+/-) 3% in RERA carpet area may occur on account of planning constraints / site conditions / column / finishing. All these dimensions are unfinished structural dimensions. The furniture / fixtures depicted herein are indicative & will not be a part of the standard offering. 1 sq.m. =10.764 sq.ft. The project was approved by the concerned authorities prior to RERA. However, for the purpose of clarity and full disclosure, a detailed area description of the unit is provided herein basis approvals / revised approvals duly obtained from the concerned authorities from time to time. Maharashtra registration no.: P51800005285] Available on website <https://maharera.mahaonline.gov.in>

SIESTA
THE PRESTIGE CITY
YOGI HILLS, MULUND

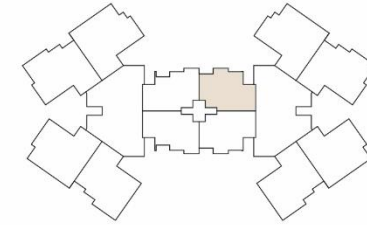
WING - B 2 BED SKY LOUNGE RESIDENCE

Unit 1 - Profile -2-14th, 16th, 18th, 20th, 22nd, 24th, 26th, 28th, 30th, 32nd, 34th, 37th, 39th, 41st, 43rd, 45th, 47th, 49th, 51st & 53rd Floor Plan

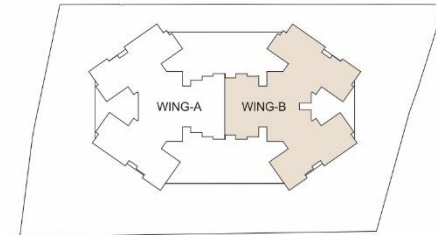
Living Space		Sky Lounge		Total Area (Sq.Ft.)
RERA Carpet Area	Enclosed Balcony	Balcony	Dry Balcony	
750	49	194	31	1024
799		225		



UNIT LOCATION



TOWER LOCATION



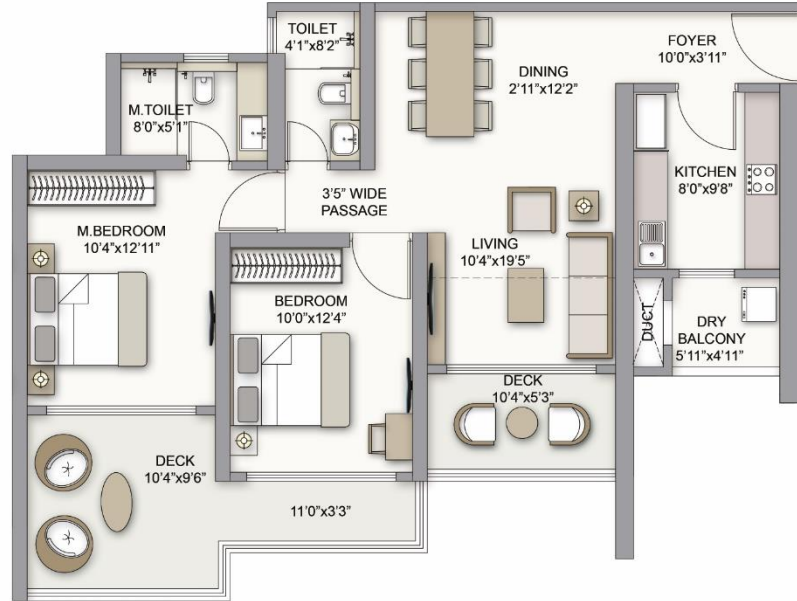
A variance of (+/-) 3% in RERA carpet area may occur on account of planning constraints / site conditions / column / finishing. All these dimensions are unfinished structural dimensions. The furniture / fixtures depicted herein are indicative & will not be a part of the standard offering. 1 sq.m. =10.764 sq.ft. The project was approved by the concerned authorities prior to RERA. However, for the purpose of clarity and full disclosure, a detailed area description of the unit is provided herein basis approvals / revised approvals duly obtained from the concerned authorities from time to time. Maharera registration no.: P51800005285] Available on website <https://maharera.mahaonline.gov.in>

SIESTA
THE PRESTIGE CITY
YOGI HILLS, MULUND

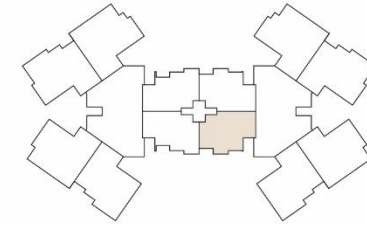
WING - B 2 BED SKY LOUNGE RESIDENCE

Unit 2 - Profile -2-14th, 16th, 18th, 20th, 22nd, 24th, 26th, 28th, 30th, 32nd, 34th, 37th, 39th, 41st, 43rd, 45th, 47th, 49th, 51st & 53rd Floor Plan

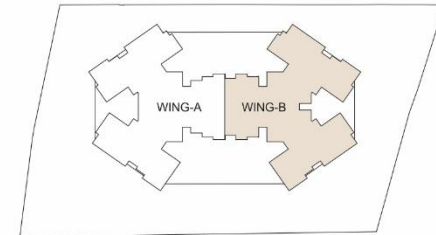
Living Space		Sky Lounge		Total Area (Sq.Ft.)
RERA Carpet Area	Enclosed Balcony	Balcony	Dry Balcony	
750	49	194	31	1024
799		225		



UNIT LOCATION



TOWER LOCATION



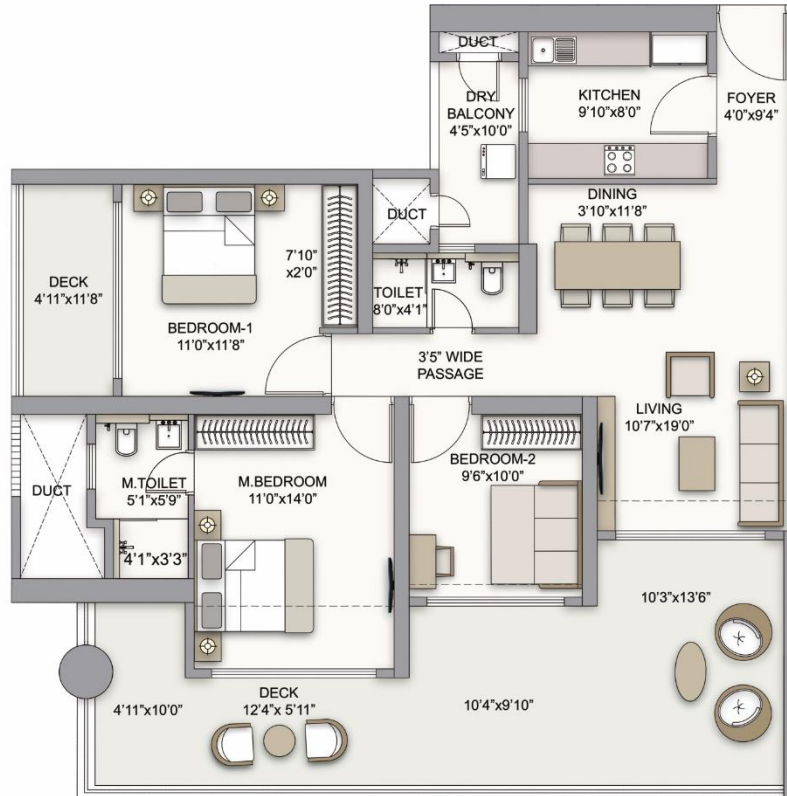
A variance of (+/-) 3% in RERA carpet area may occur on account of planning constraints / site conditions / column / finishing. All these dimensions are unfinished structural dimensions. The furniture / fixtures depicted herein are indicative & will not be a part of the standard offering. 1 sq.m. =10.764 sq.ft. The project was approved by the concerned authorities prior to RERA. However, for the purpose of clarity and full disclosure, a detailed area description of the unit is provided herein basis approvals / revised approvals duly obtained from the concerned authorities from time to time. Maharera registration no.: P51800005285] Available on website <https://maharera.mahaonline.gov.in>

SIESTA
THE PRESTIGE CITY
YOGI HILLS, MULUND

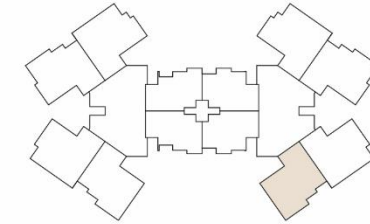
WING - B 3 BED SKY LOUNGE RESIDENCE

Unit 3 - Profile -2-14th, 16th, 18th, 20th, 22nd, 24th, 26th, 28th, 30th, 32nd, 34th, 37th, 39th, 41st, 43rd, 45th, 47th, 49th & 51st Floor Plan

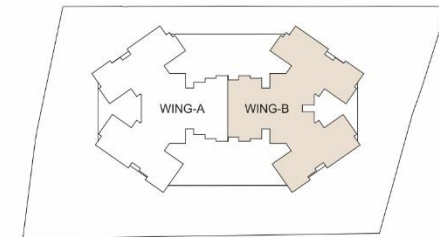
Living Space		Sky Lounge		Total Area (Sq.Ft.)
RERA Carpet Area	Enclosed Balcony	Balcony	Dry Balcony	
861	87	447	46	1441
948		493		



UNIT LOCATION



TOWER LOCATION



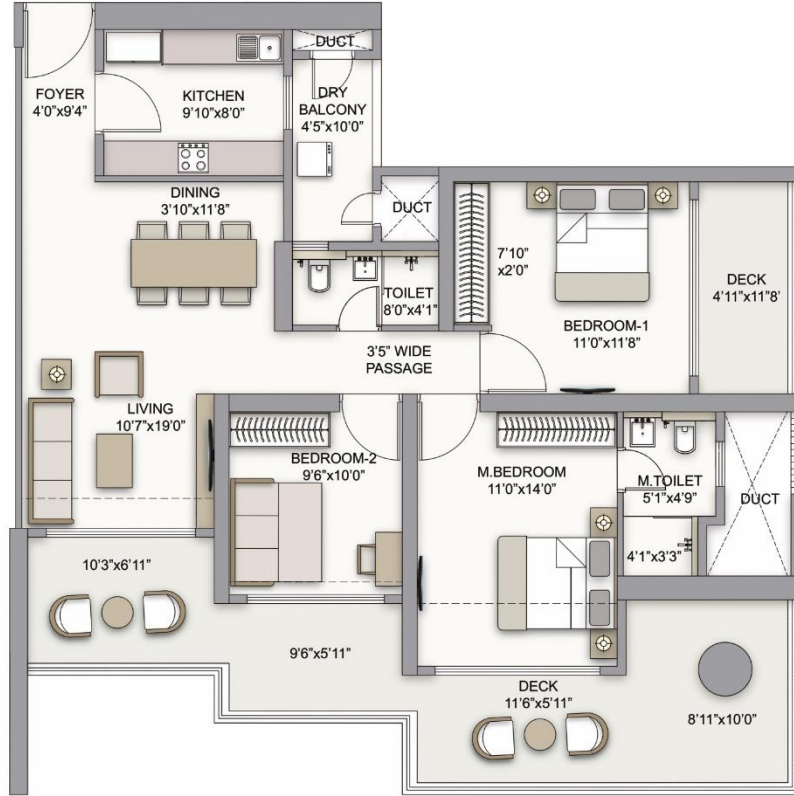
A variance of (+/-) 3% in RERA carpet area may occur on account of planning constraints / site conditions / column / finishing. All these dimensions are unfinished structural dimensions. The furniture / fixtures depicted herein are indicative & will not be a part of the standard offering. 1 sq.m. =10.764 sq.ft. The project was approved by the concerned authorities prior to RERA. However, for the purpose of clarity and full disclosure, a detailed area description of the unit is provided herein basis approvals / revised approvals duly obtained from the concerned authorities from time to time. Maharashtra registration no.: P51800005285] Available on website <https://maharera.mahaonline.gov.in>

SIESTA
THE PRESTIGE CITY
YOGI HILLS, MULUND

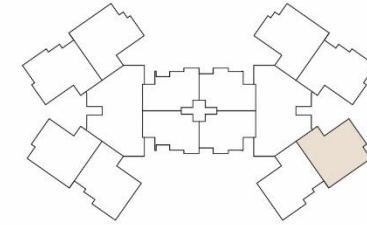
WING - B 3 BED SKY LOUNGE RESIDENCE

Unit 4 - Profile -2-14th, 16th, 18th, 20th, 22nd, 24th, 26th, 28th, 30th, 32nd, 34th, 37th, 39th, 41st, 43rd, 45th, 47th, 49th & 51st Floor Plan

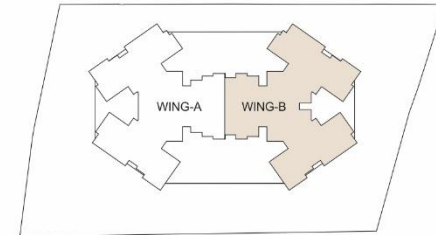
Living Space		Sky Lounge		Total Area (Sq.Ft.)
RERA Carpet Area	Enclosed Balcony	Balcony	Dry Balcony	
861	87	373	46	1367
948		419		



UNIT LOCATION



TOWER LOCATION



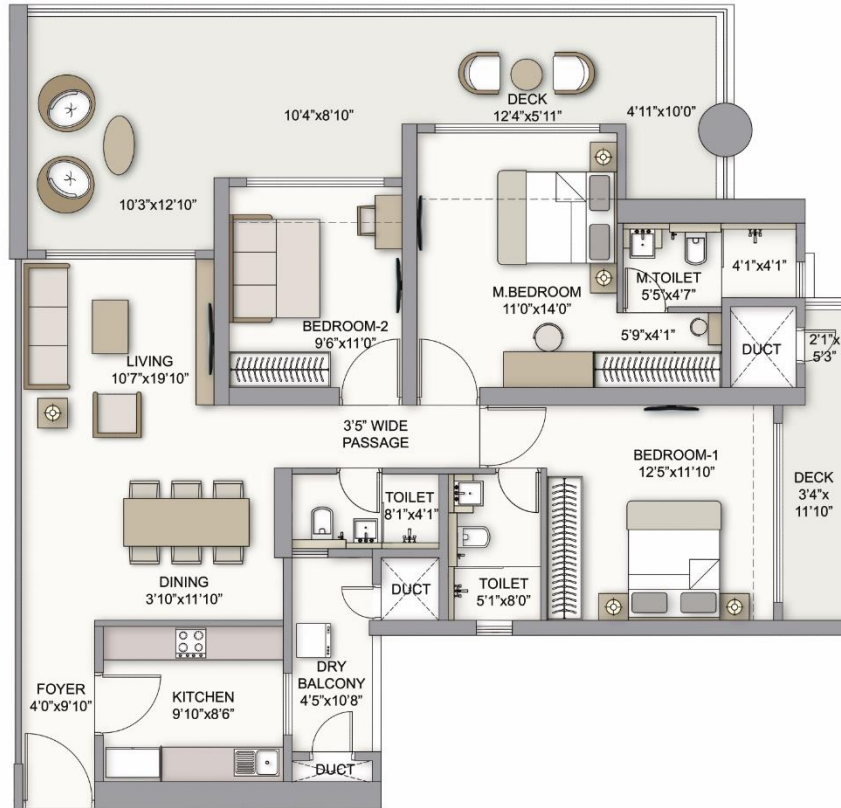
A variance of (+/-) 3% in RERA carpet area may occur on account of planning constraints / site conditions / column / finishing. All these dimensions are unfinished structural dimensions. The furniture / fixtures depicted herein are indicative & will not be a part of the standard offering. 1 sq.m. =10.764 sq.ft. The project was approved by the concerned authorities prior to RERA. However, for the purpose of clarity and full disclosure, a detailed area description of the unit is provided herein basis approvals / revised approvals duly obtained from the concerned authorities from time to time. Maharerera registration no.: P51800005285] Available on website <https://maharera.mahaonline.gov.in>

SIESTA
THE PRESTIGE CITY
YOGI HILLS, MULUND

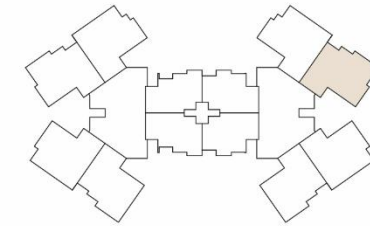
WING - B 3 BED XL SKY LOUNGE RESIDENCE

Unit 5 - Profile -2-14th, 16th, 18th, 20th, 22nd, 24th, 26th, 28th, 30th, 32nd, 34th, 37th, 39th, 41st, 43rd, 45th, 47th, 49th & 51st Floor Plan

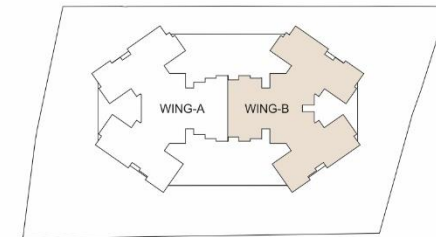
Living Space		Sky Lounge		Total Area (Sq.Ft.)
RERA Carpet Area	Enclosed Balcony	Balcony	Dry Balcony	
990	72	424	49	1535
1062		473		



UNIT LOCATION



TOWER LOCATION



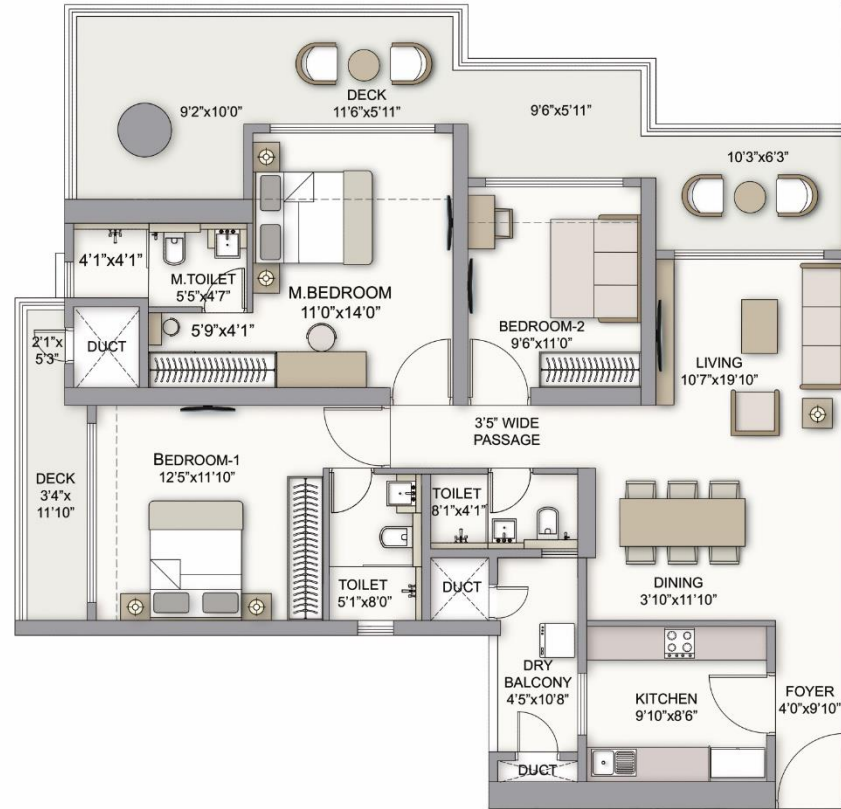
A variance of (+/-) 3% in RERA carpet area may occur on account of planning constraints / site conditions / column / finishing. All these dimensions are unfinished structural dimensions. The furniture / fixtures depicted herein are indicative & will not be a part of the standard offering. 1 sq.m. =10.764 sq.ft. The project was approved by the concerned authorities prior to RERA. However, for the purpose of clarity and full disclosure, a detailed area description of the unit is provided herein basis approvals / revised approvals duly obtained from the concerned authorities from time to time. Maharera registration no.: P51800005285] Available on website <https://maharera.mahaonline.gov.in>

SIESTA
THE PRESTIGE CITY
YOGI HILLS, MULUND

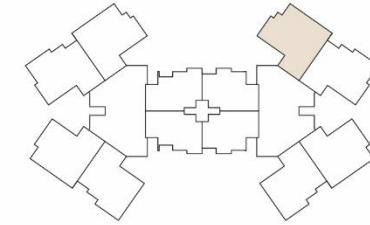
WING - B 3 BED XL SKY LOUNGE RESIDENCE

Unit 6 - Profile -2-16th, 18th, 20th, 22nd, 24th, 26th, 30th,
32nd, 34th, 37th, 39th, 41st, 43rd, 45th, 47th & 51st Floor Plan

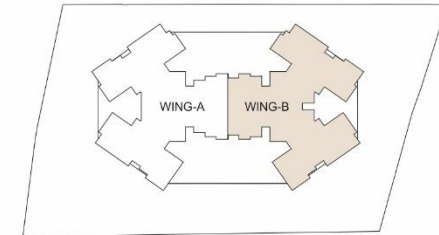
Living Space		Sky Lounge		Total Area (Sq.Ft.)
RERA Carpet Area	Enclosed Balcony	Balcony	Dry Balcony	
996	72	363	49	1480
1068		412		



UNIT LOCATION



TOWER LOCATION



A variance of (+/-) 3% in RERA carpet area may occur on account of planning constraints / site conditions / column / finishing. All these dimensions are unfinished structural dimensions. The furniture / fixtures depicted herein are indicative & will not be a part of the standard offering. 1 sq.m. =10.764 sq.ft. The project was approved by the concerned authorities prior to RERA. However, for the purpose of clarity and full disclosure, a detailed area description of the unit is provided herein basis approvals / revised approvals duly obtained from the concerned authorities from time to time. Maharera registration no.: P51800005285] Available on website <https://maharera.mahaonline.gov.in>

SIESTA
THE PRESTIGE CITY
YOGI HILLS, MULUND