



CHANDAK

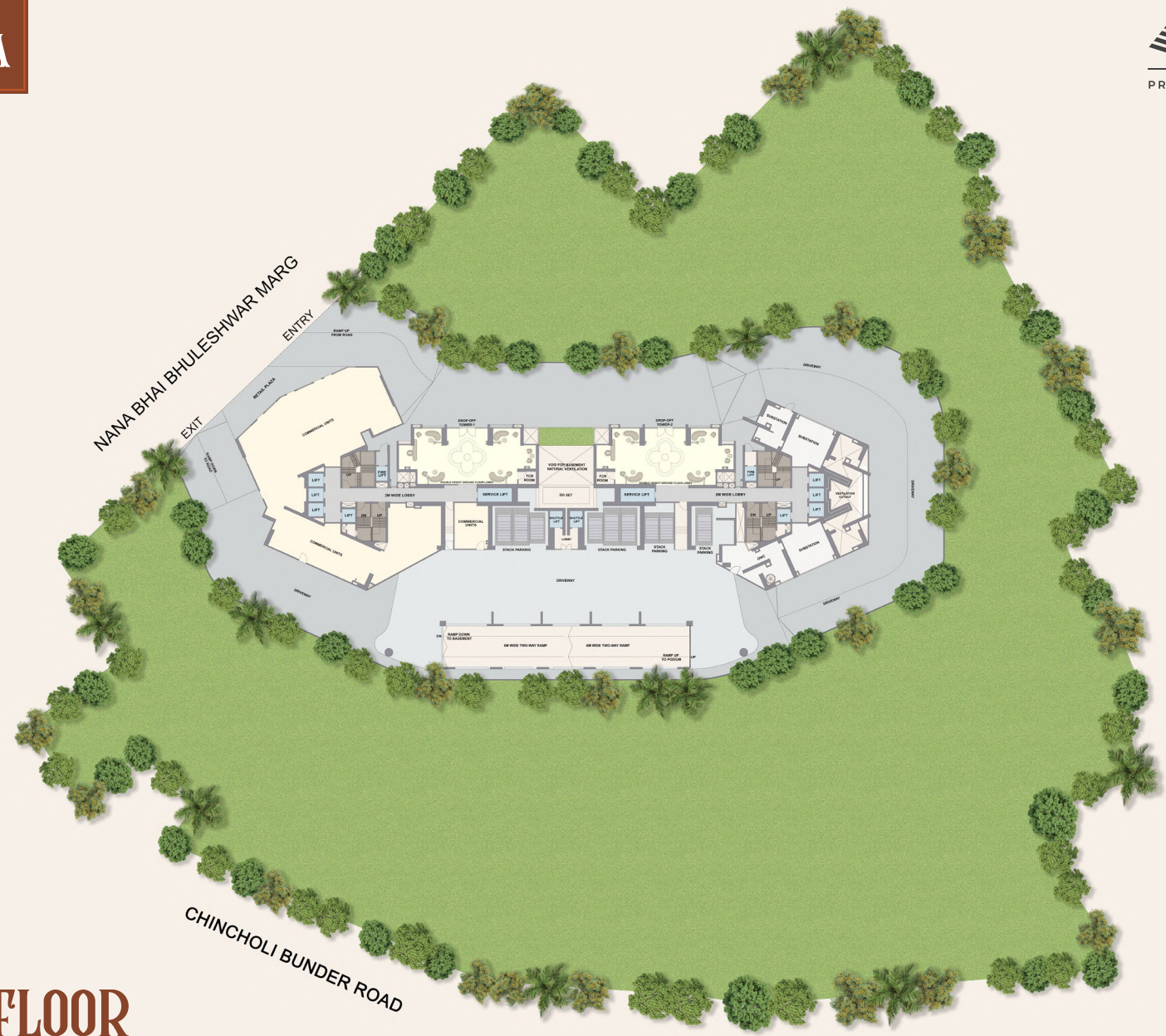
PROMISES MADE. PROMISES KEPT.

CODENAME

NOSTALGIA

TOWER 1 – FLOOR PLANS

CODENAME
NOSTALGIA



GROUND FLOOR

Disclaimer- Project is marketed as Codename Nostalgia and the same is registered as 'Chandak Treesourus' on the MahaRERA bearing MahaRERA Registration No. PS1800048658. Available on: <https://maharera.mahaonline.gov.in>. This communication is purely conceptual and not a legal offering, the information contained herein is only indicative in nature. The project amenities, facilities and as per the plans approved/to be approved by the concerned authority. All furniture, fixtures, features, interior design and other arrangements/facilities as depicted above (save and except expressly agreed to be provided) are not part of the standard offering and are purely illustrative. List of standard offerings, amenities and other details are available for verification at the project site. Intending purchasers are requested to verify all the details before acting in any manner with respect to the project.



GROUND FLOOR



Disclaimer- Project is marketed as Codename Nostalgia and the same is registered as 'Chandak Treasures' on the MahaRERA bearing MahaRERA Registration No. PS1800048658. Available on: <https://maharera.mahaonline.gov.in>. This communication is purely conceptual and not a legal offering, the information contained herein is only indicative in nature. The project amenities, facilities and as per the plans approved/to be approved by the concerned authority. All furniture, fixtures, features, interior design and other arrangements/facilities as depicted above (save and except expressly agreed to be provided) are not part of the standard offering and are purely illustrative. List of standard offerings, amenities and other details are available for verification at the project site. Intending purchasers are requested to verify all the details before acting in any manner with respect to the project.



PODIUM 2ND TO 6TH & 8TH



TOWER 1						
FLAT NO.	1	2	3	4	5	6
RERA CARPET AREA	689 sq.ft.	682 sq.ft.	1005 sq.ft.	966 sq.ft.	672 sq.ft.	668 sq.ft.
ADDITIONAL AREA	55 sq.ft.	56 sq.ft.	63 sq.ft.	63 sq.ft.	50 sq.ft.	50 sq.ft.
TOTAL AREA	744 sq.ft.	738 sq.ft.	1068 sq.ft.	1029 sq.ft.	722 sq.ft.	718 sq.ft.

Disclaimer- Project is marketed as Codename Nostalgia and the same is registered as 'Chandak Treesourus' on the MahaRERA bearing MahaRERA Registration No. P51800048658. Available on: <https://maharera.mahaonline.gov.in>. This communication is purely conceptual and not a legal offering, the information contained herein is only indicative in nature. The areas and dimensions mentioned above are as per the plans approved/to be approved by the concerned authority and the same are subject to construction exigencies and variations. The furniture, fixtures, features, interior design and other arrangements/facilities as depicted above (save and except expressly agreed to be provided) are not part of the standard offering and are purely illustrative. List of standard offerings, amenities, facilities and other details are available for verification at the Project site. Intending purchasers are requested to verify all the details before acting in any manner with respect to project.



REFUGE PLAN - 7TH FLOOR



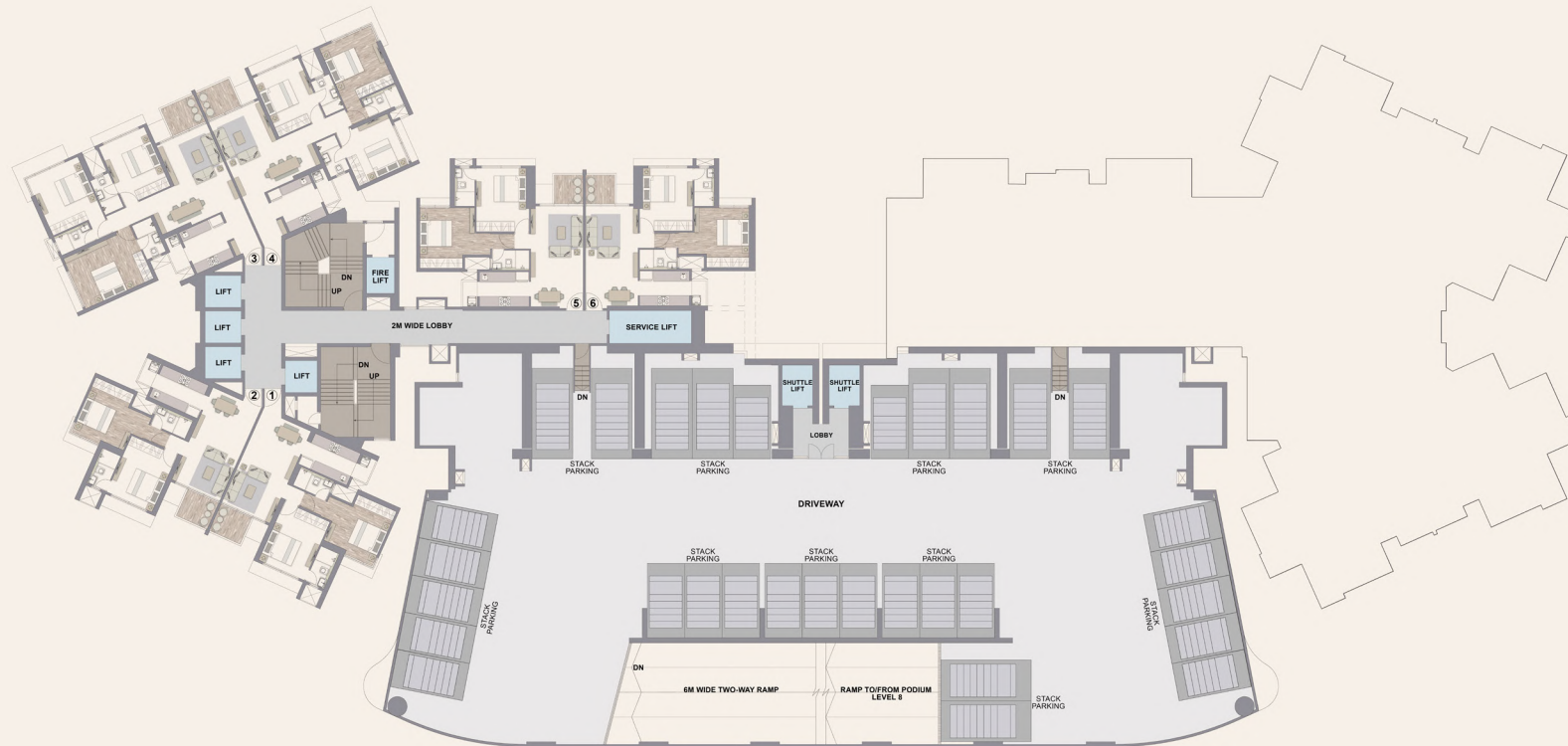
TOWER 1				
FLAT NO.	1	2	3	4
RERA CARPET AREA	689 sq.ft.	682 sq.ft.	1005 sq.ft.	966 sq.ft.
ADDITIONAL AREA	55 sq.ft.	56 sq.ft.	63 sq.ft.	63 sq.ft.
TOTAL AREA	744 sq.ft.	738 sq.ft.	1068 sq.ft.	1029 sq.ft.

Disclaimer- Project is marketed as Codename Nostalgia and the same is registered as 'Chandak Treesourus' on the MahaRERA bearing MahaRERA Registration No. P51800048658. Available on: <https://maharera.mahaonline.gov.in>. This communication is purely conceptual and not a legal offering, the information contained herein is only indicative in nature. The areas and dimensions mentioned above are as per the plans approved/to be approved by the concerned authority and the same are subject to construction exigencies and variations. The furniture, fixtures, features, interior design and other arrangements/facilities as depicted above (save and except expressly agreed to be provided) are not part of the standard offering and are purely illustrative. List of standard offerings, amenities, facilities and other details are available for verification at the Project site. Intending purchasers are requested to verify all the details before acting in any manner with respect to project.



PLAN NOT TO SCALE

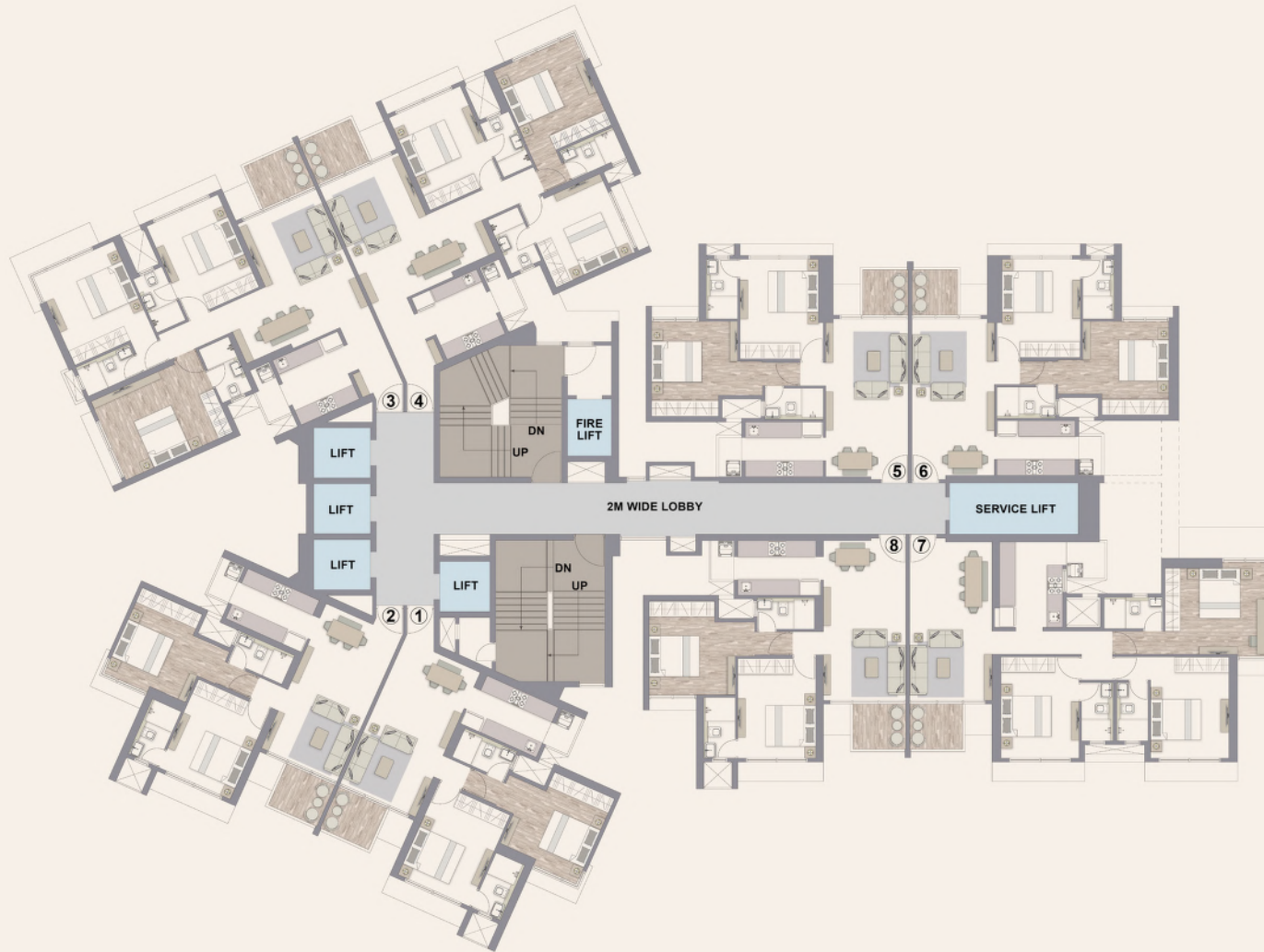
PODIUM – 9TH FLOOR



TOWER 1						
FLAT NO.	1	2	3	4	5	6
RERA CARPET AREA	689 sq.ft.	682 sq.ft.	1005 sq.ft.	966 sq.ft.	672 sq.ft.	668 sq.ft.
ADDITIONAL AREA	55 sq.ft.	56 sq.ft.	63 sq.ft.	63 sq.ft.	50 sq.ft.	50 sq.ft.
TOTAL AREA	744 sq.ft.	738 sq.ft.	1068 sq.ft.	1029 sq.ft.	722 sq.ft.	718 sq.ft.

Disclaimer- Project is marketed as Codename Nostalgia and the same is registered as 'Chandak Treesourus' on the MahaRERA bearing MahaRERA Registration No. P51800048658. Available on: <https://maharera.mahaonline.gov.in>. This communication is purely conceptual and not a legal offering, the information contained herein is only indicative in nature. The areas and dimensions mentioned above are as per the plans approved/to be approved by the concerned authority and the same are subject to construction exigencies and variations. The furniture, fixtures, features, interior design and other arrangements/facilities as depicted above (save and except expressly agreed to be provided) are not part of the standard offering and are purely illustrative. List of standard offerings, amenities, facilities and other details are available for verification at the Project site. Intending purchasers are requested to verify all the details before acting in any manner with respect to project.





TYPICAL PLAN TOWER - 1

FLAT NO.	RERA CARPET AREA	ADDITIONAL AREA	TOTAL AREA
1	689 sq.ft.	55 sq.ft.	744 sq.ft.
2	682 sq.ft.	56 sq.ft.	738 sq.ft.
3	1005 sq.ft.	63 sq.ft.	1068 sq.ft.
4	966 sq.ft.	63 sq.ft.	1029 sq.ft.
5	672 sq.ft.	50 sq.ft.	722 sq.ft.
6	668 sq.ft.	50 sq.ft.	718 sq.ft.
7	955 sq.ft.	64 sq.ft.	1019 sq.ft.
8	676 sq.ft.	55 sq.ft.	731 sq.ft.

Disclaimer- Project is marketed as Codename Nostalgia and the same is registered as 'Chandak Treesourus' on the MahaRERA bearing MahaRERA Registration No. P51800048658. Available on: <https://maharera.mahaonline.gov.in>. This communication is purely conceptual and not a legal offering, the information contained herein is only indicative in nature. The areas and dimensions mentioned above are as per the plans approved/to be approved by the concerned authority and the same are subject to construction exigencies and variations. The furniture, fixtures, features, interior design and other arrangements/facilities as depicted above (save and except expressly agreed to be provided) are not part of the standard offering and are purely illustrative. List of standard offerings, amenities, facilities and other details are available for verification at the Project site. Intending purchasers are requested to verify all the details before acting in any manner with respect to project.



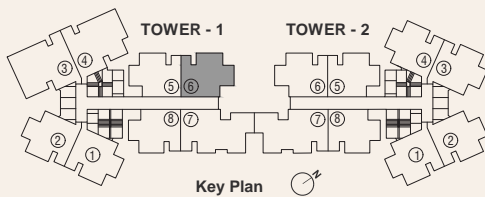
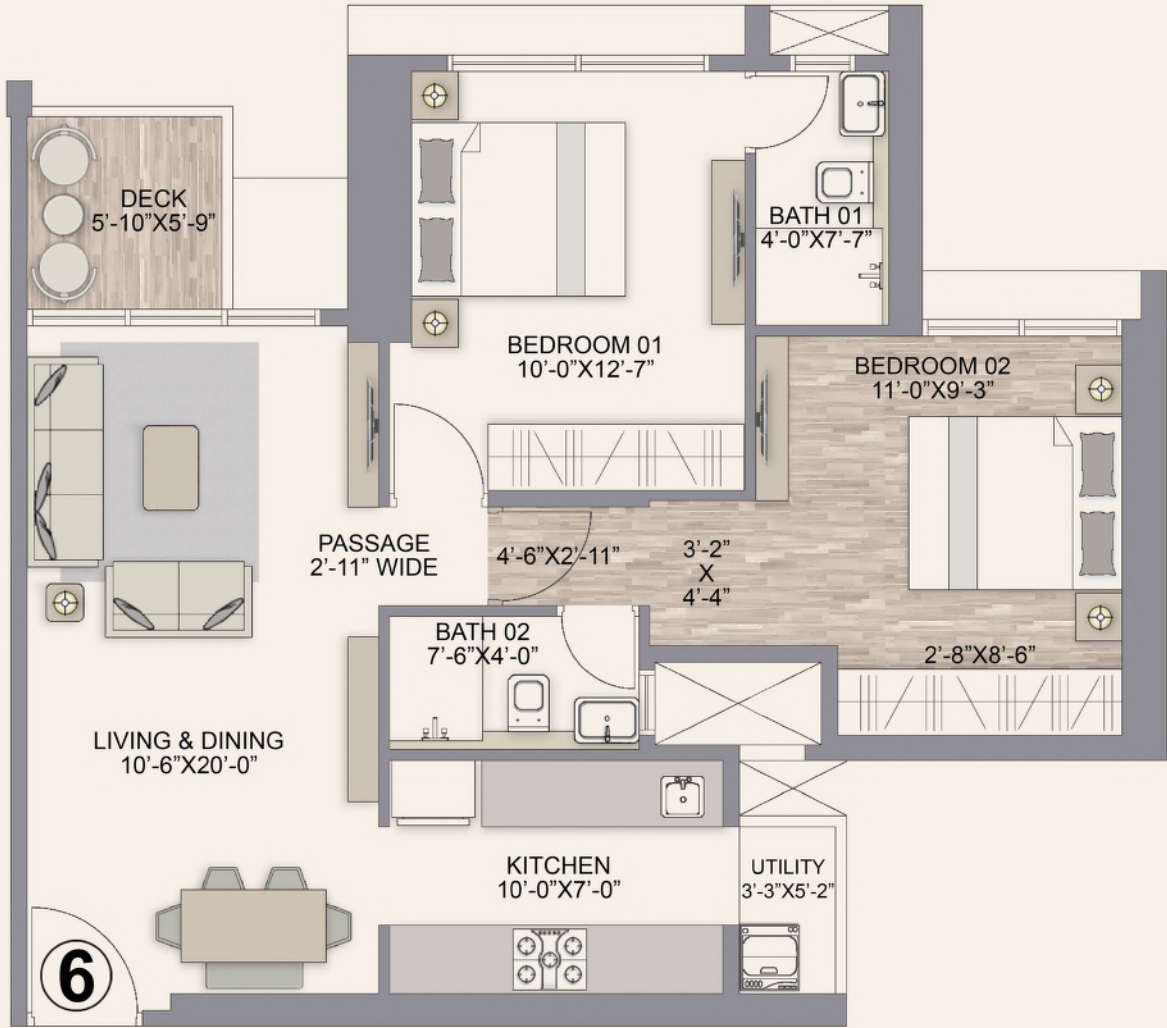
REFUGE PLAN – TYPICAL 14TH & 21ST, 28TH, 35TH FLOOR



TOWER 1						
FLAT NO.	1	2	3	4	7	8
RERA CARPET AREA	689 sq.ft.	682 sq.ft.	1005 sq.ft.	966 sq.ft.	955 sq.ft.	676 sq.ft.
ADDITIONAL AREA	55 sq.ft.	56 sq.ft.	63 sq.ft.	63 sq.ft.	64 sq.ft.	55 sq.ft.
TOTAL AREA	744 sq.ft.	738 sq.ft.	1068 sq.ft.	1029 sq.ft.	1019 sq.ft.	731 sq.ft.

Disclaimer- Project is marketed as Codename Nostalgia and the same is registered as 'Chandak Treesourus' on the MahaRERA bearing MahaRERA Registration No. P51800048658. Available on: <https://maharera.mahaonline.gov.in>. This communication is purely conceptual and not a legal offering, the information contained herein is only indicative in nature. The areas and dimensions mentioned above are as per the plans approved/to be approved by the concerned authority and the same are subject to construction exigencies and variations. The furniture, fixtures, features, interior design and other arrangements/facilities as depicted above (save and except expressly agreed to be provided) are not part of the standard offering and are purely illustrative. List of standard offerings, amenities, facilities and other details are available for verification at the Project site. Intending purchasers are requested to verify all the details before acting in any manner with respect to project.

2 BHK - 718 SQ.FT.*



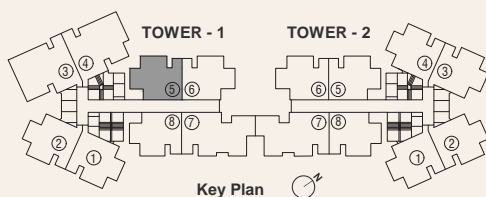
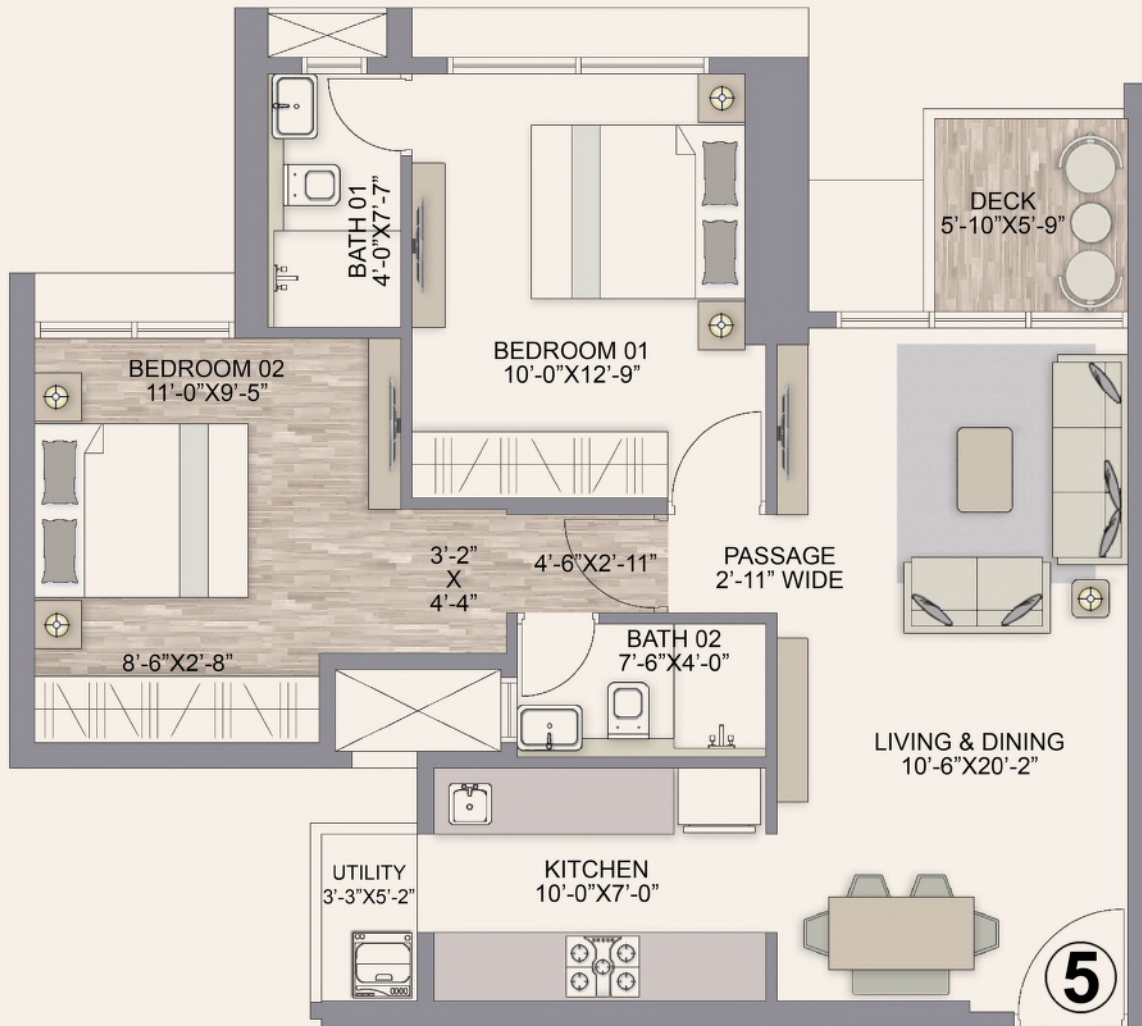
RERA CARPET AREA	ADDITIONAL AREA	TOTAL AREA
SQ.FT	SQ.FT	SQ.FT
668	50	718



Plan Not To Scale

*T&C Applied

2 BHK - 722 SQ.FT.*



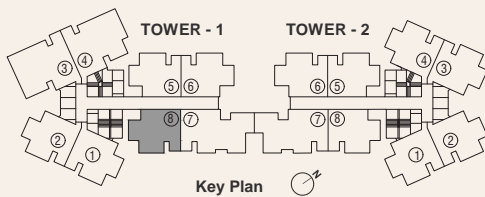
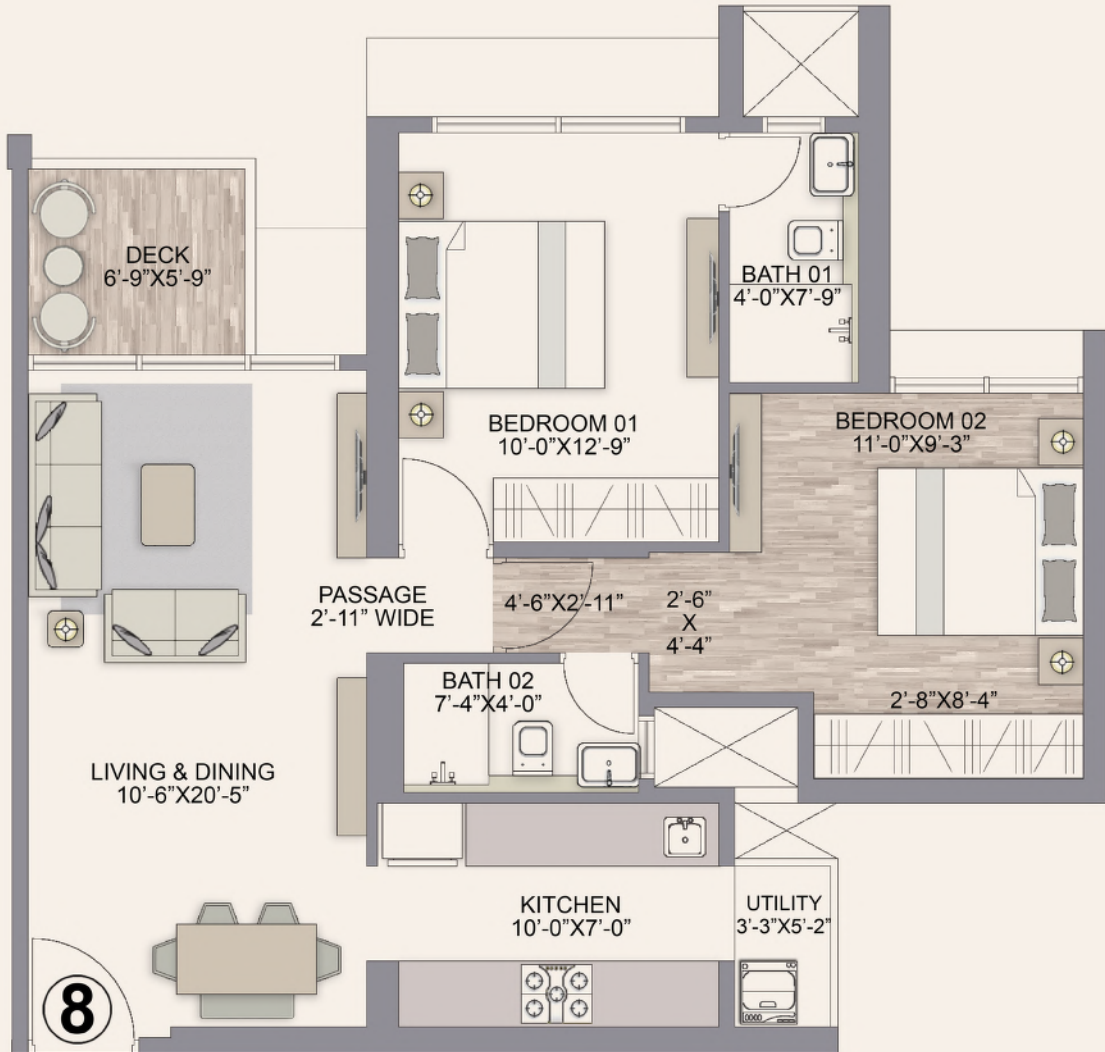
RERA CARPET AREA	ADDITIONAL AREA	TOTAL AREA
SQ.FT	SQ.FT	SQ.FT
672	50	722



Plan Not To Scale

*T&C Applied

2 BHK - 731 SQ.FT.*



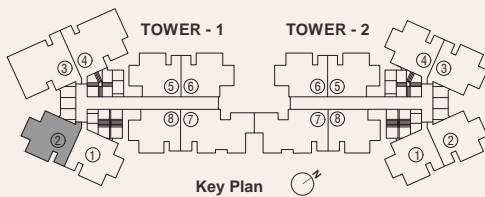
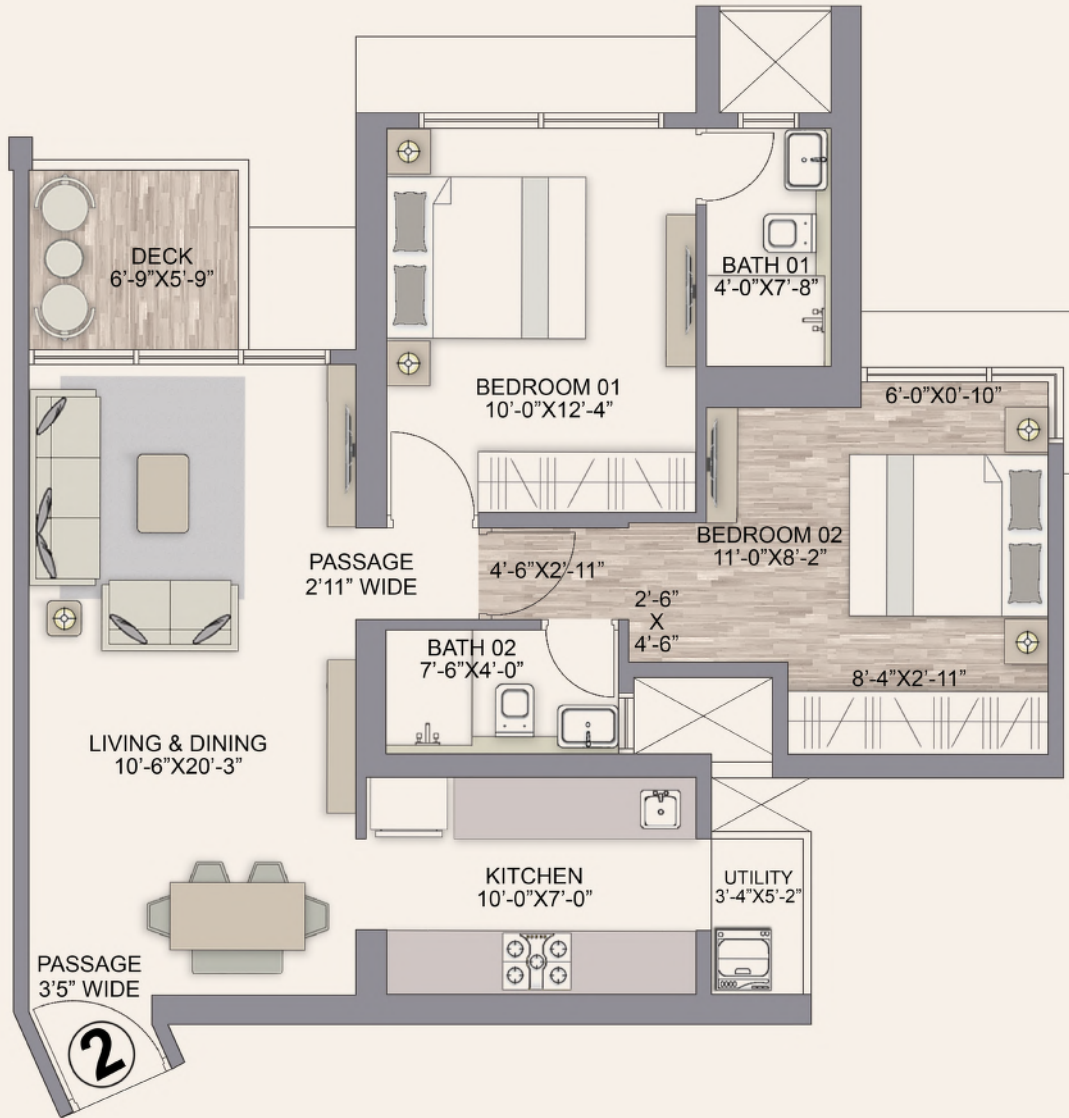
RERA CARPET AREA	ADDITIONAL AREA	TOTAL AREA
SQ.FT	SQ.FT	SQ.FT
676	55	731



Plan Not To Scale

*T&C Applied

2 BHK - 738 SQ.FT.*



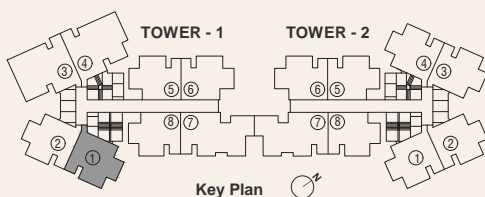
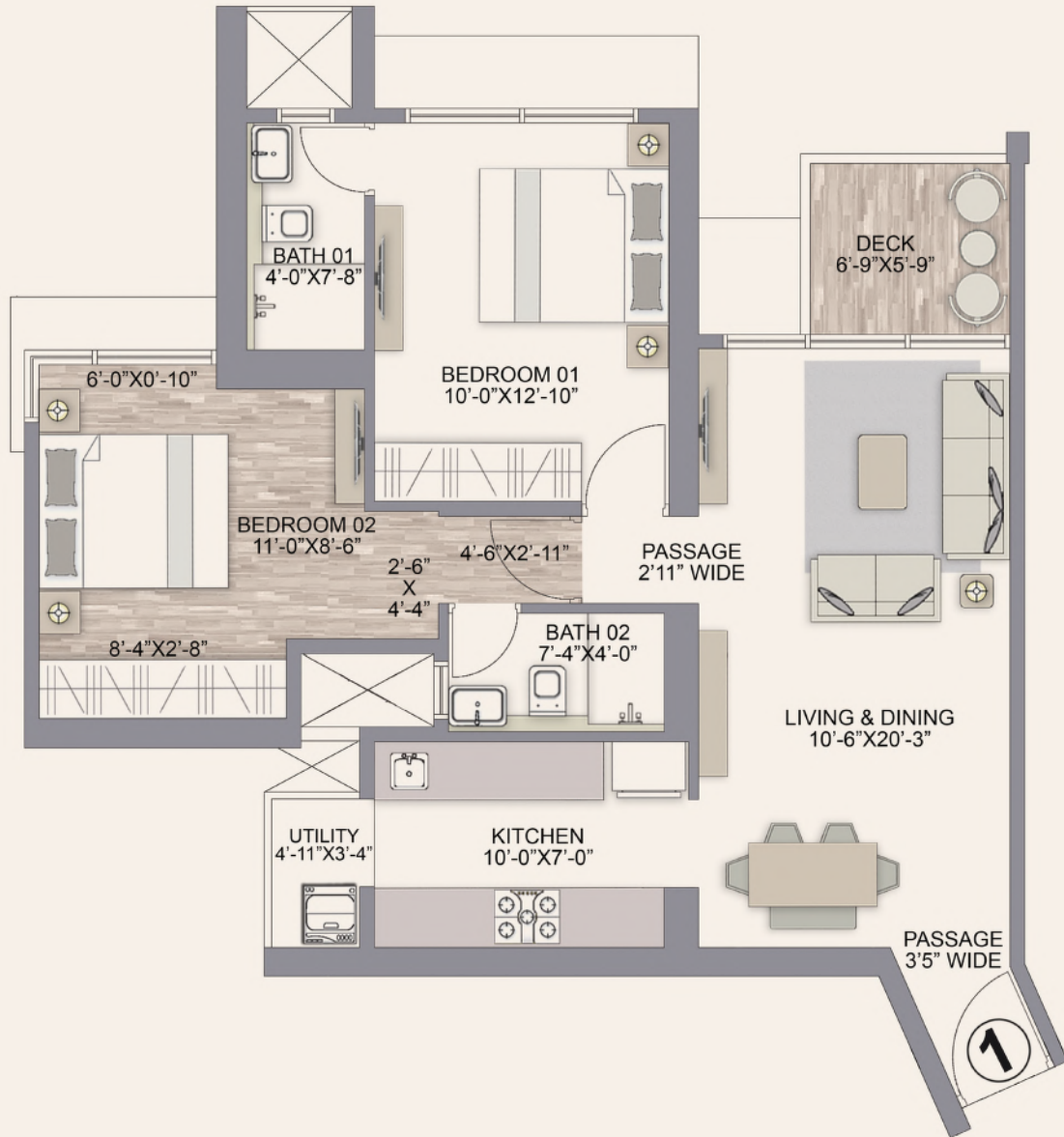
RERA CARPET AREA	ADDITIONAL AREA	TOTAL AREA
SQ.FT	SQ.FT	SQ.FT
682	56	738



Plan Not To Scale

*T&C Applied

2 BHK - 744 SQ.FT.*



RERA CARPET AREA	ADDITIONAL AREA	TOTAL AREA
SQ.FT	SQ.FT	SQ.FT
689	55	744

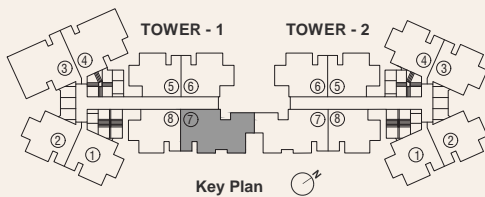
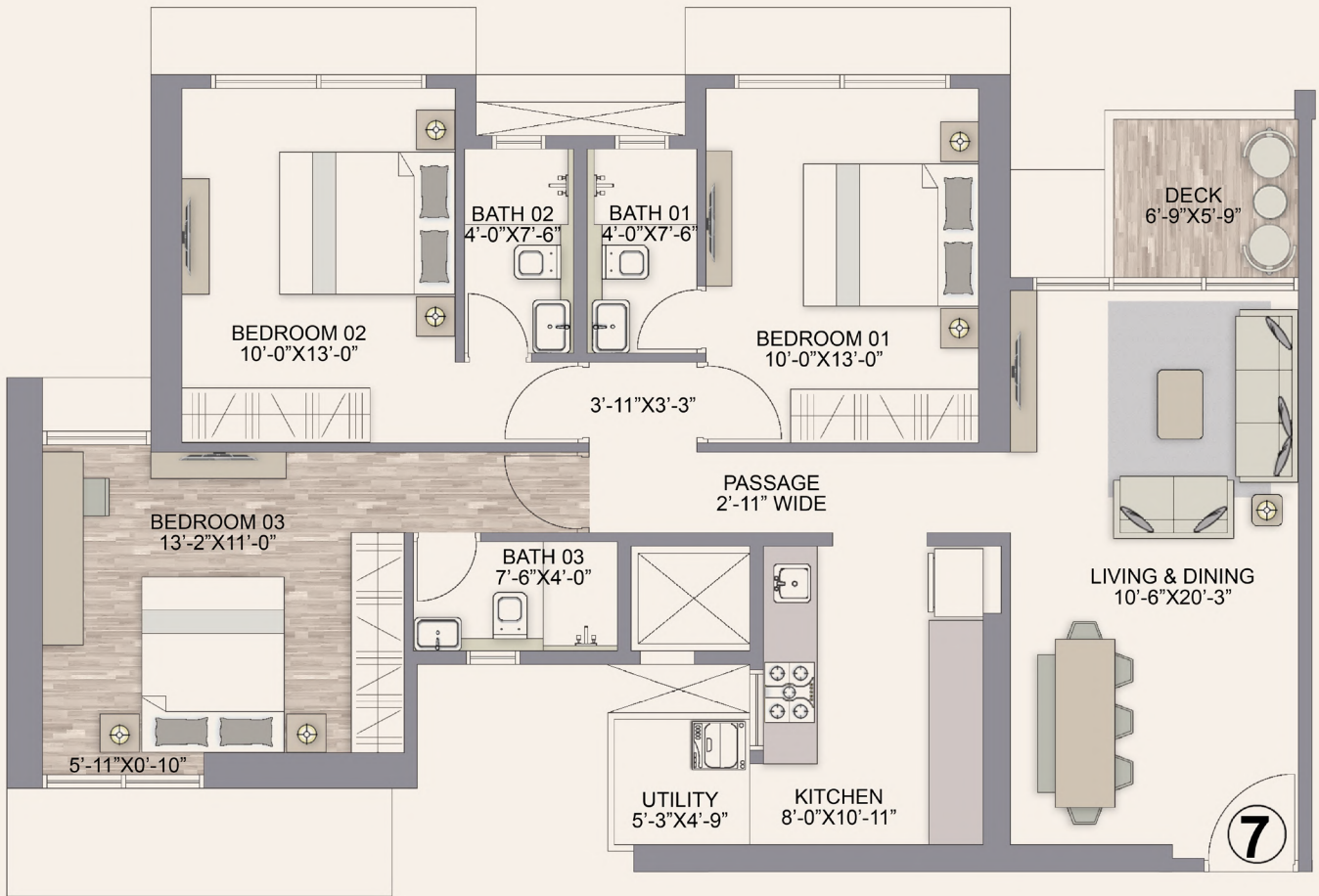


Plan Not To Scale

*T&C Applied

Disclaimer - Project is marketed as Codename Nostalgia and the same is registered as 'Chandak Treesourus' on the MahaRERA bearing MahaRERA Registration No. P51800048658. Available on: <https://maharera.mahaonline.gov.in>. This communication is purely conceptual and not a legal offering, the information contained herein is only indicative in nature. The areas and dimensions mentioned above are as per the plans approved/to be approved by the concerned authority and the same are subject to construction exigencies and variations. The furniture, fixtures, features, interior design and other arrangements/facilities as depicted above (save and except expressly agreed to be provided) are not part of the standard offering and are purely illustrative. List of standard offerings, amenities, facilities and other details are available for verification at the Project site. Intending purchasers are requested to verify all the details before acting in any manner with respect to project.

3 BHK - 1019 SQ.FT.*



RERA CARPET AREA	ADDITIONAL AREA	TOTAL AREA
SQ.FT	SQ.FT	SQ.FT
955	64	1019

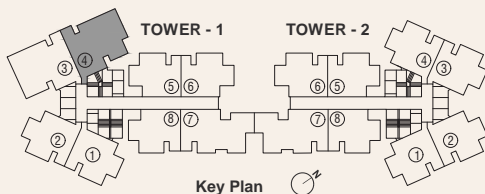
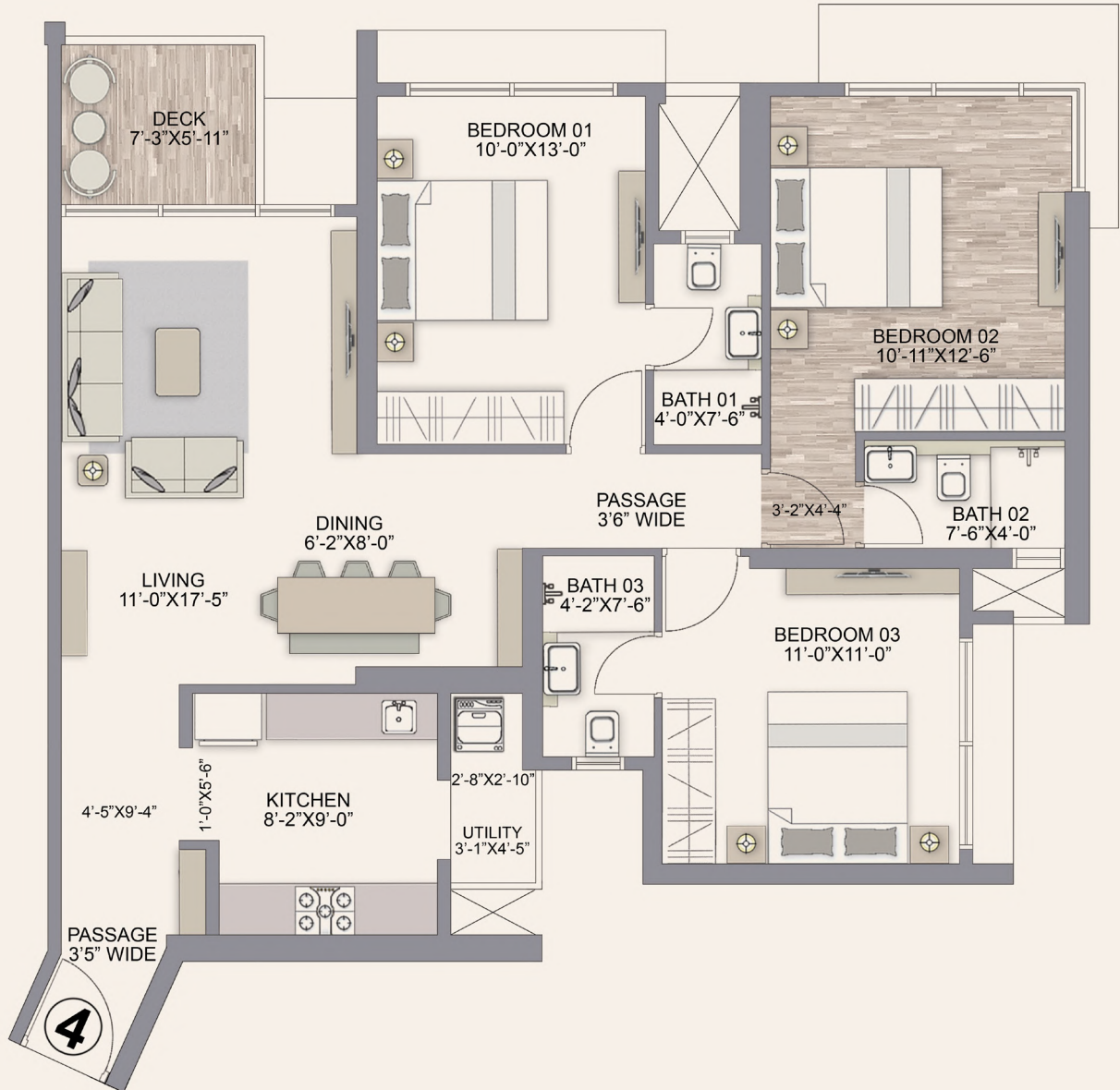


Plan Not To Scale

*T&C Applied

Disclaimer - Project is marketed as Codename Nostalgia and the same is registered as 'Chandak Treesourus' on the MahaRERA bearing MahaRERA Registration No. P51800048658. Available on: <https://maharera.mahaonline.gov.in>. This communication is purely conceptual and not a legal offering, the information contained herein is only indicative in nature. The areas and dimensions mentioned above are as per the plans approved/to be approved by the concerned authority and the same are subject to construction exigencies and variations. The furniture, fixtures, features, interior design and other arrangements/facilities as depicted above (save and except expressly agreed to be provided) are not part of the standard offering and are purely illustrative. List of standard offerings, amenities, facilities and other details are available for verification at the Project site. Intending purchasers are requested to verify all the details before acting in any manner with respect to project.

3 BHK - 1029 SQ.FT.*



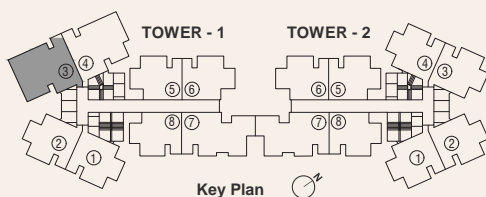
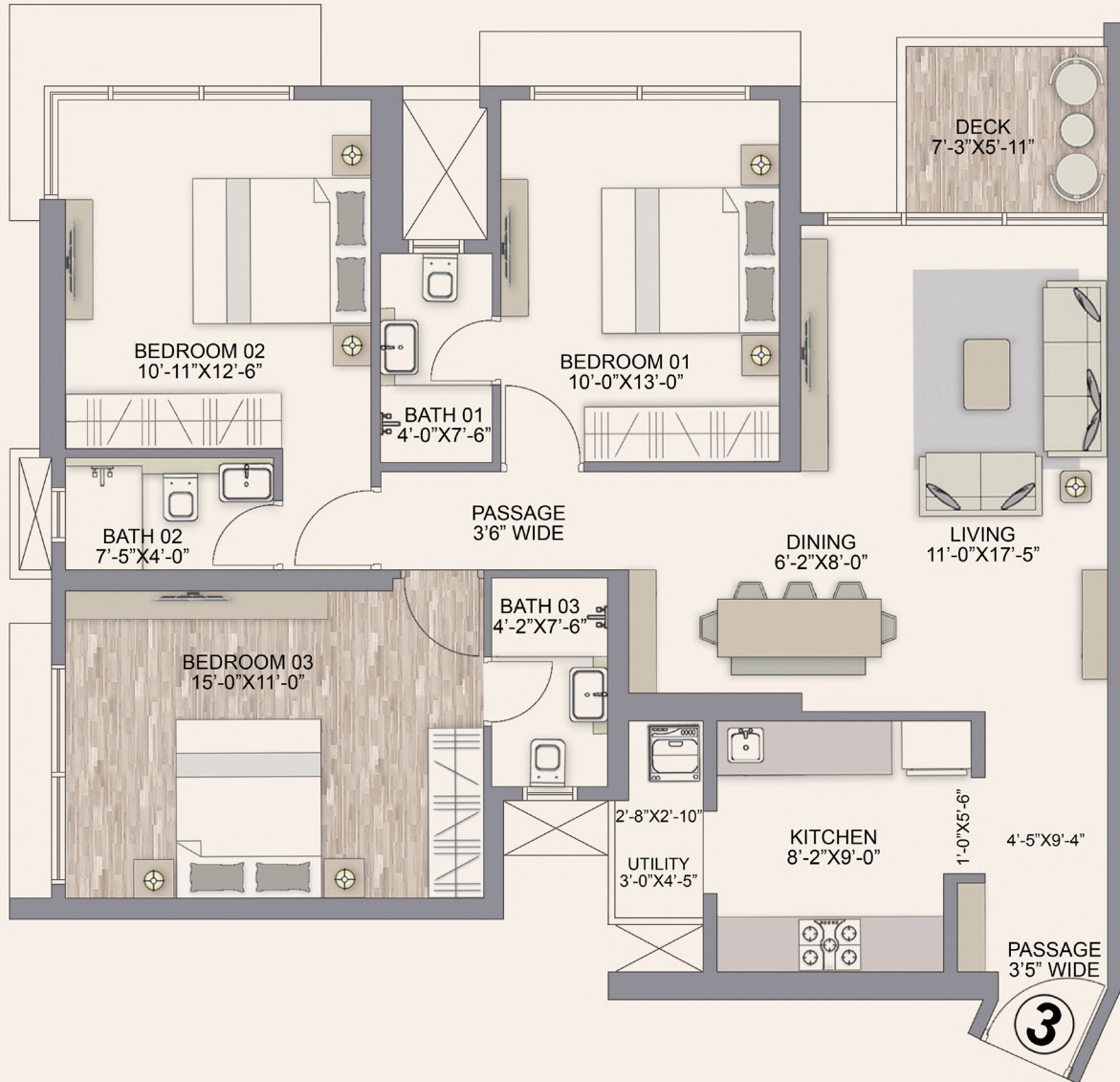
RERA CARPET AREA	ADDITIONAL AREA	TOTAL AREA
SQ.FT	SQ.FT	SQ.FT
966	63	1029



Plan Not To Scale

*T&C Applied

3 BHK - 1068 SQ.FT.*



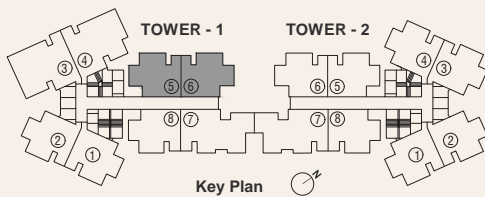
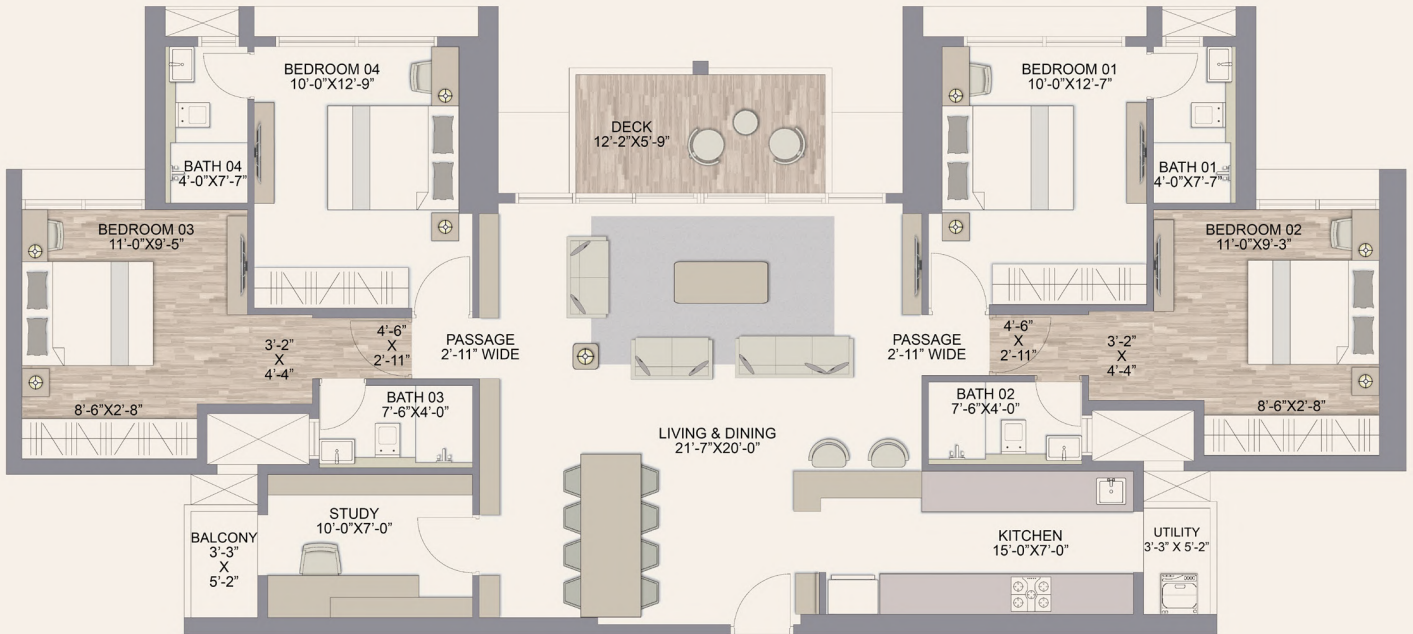
RERA CARPET AREA	ADDITIONAL AREA	TOTAL AREA
SQ.FT	SQ.FT	SQ.FT
1005	63	1068



Plan Not To Scale

*T&C Applied

5 & 6 JODI - 1451 SQ.FT.*



RERA CARPET AREA	ADDITIONAL AREA	TOTAL AREA
SQ.FT	SQ.FT	SQ.FT
1348	103	1451



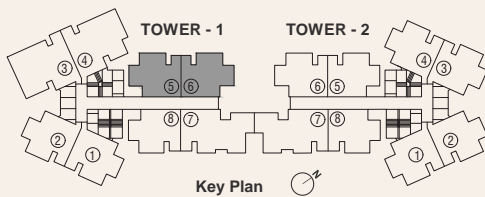
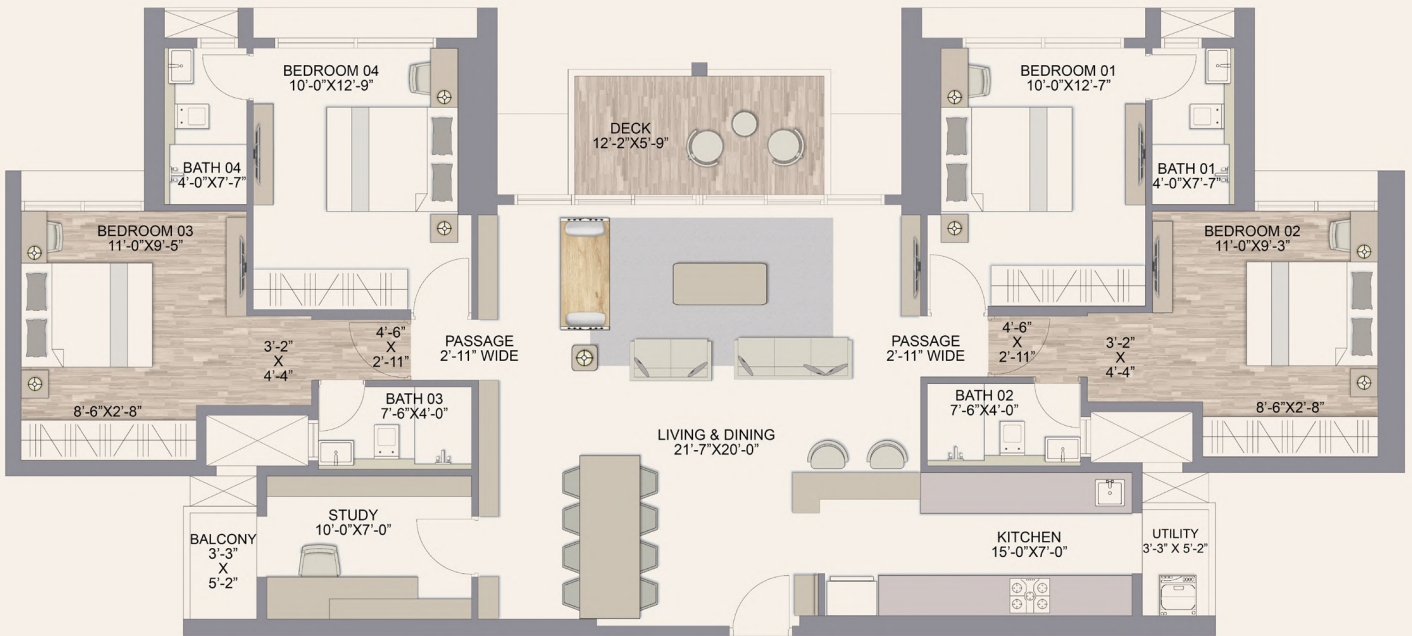
Plan Not To Scale

*T&C Applied

Disclaimer - Project is marketed as Codename Nostalgia and the same is registered as 'Chandak Treesourus' on the MahaRERA bearing MahaRERA Registration No. P51800048658. Available on: <https://maharera.mahaonline.gov.in>. This communication is purely conceptual and not a legal offering, the information contained herein is only indicative in nature. The areas and dimensions mentioned above are as per the plans approved/to be approved by the concerned authority and the same are subject to construction exigencies and variations. The furniture, fixtures, features, interior design and other arrangements/facilities as depicted above (save and except expressly agreed to be provided) are not part of the standard offering and are purely illustrative. List of standard offerings, amenities, facilities and other details are available for verification at the Project site. Intending purchasers are requested to verify all the details before acting in any manner with respect to project.

5 & 6 JODI - 1451 SQ.FT.*

WITH SWING



RERA CARPET AREA	ADDITIONAL AREA	TOTAL AREA
SQ.FT	SQ.FT	SQ.FT
1348	103	1451

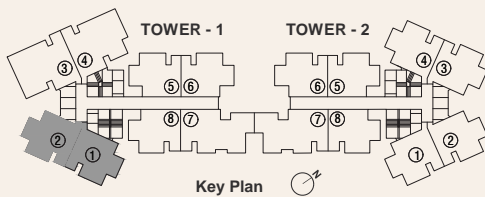


Plan Not To Scale

*T&C Applied

Disclaimer - Project is marketed as Codename Nostalgia and the same is registered as 'Chandak Treesourus' on the MahaRERA bearing MahaRERA Registration No. P51800048658. Available on: <https://maharera.mahaonline.gov.in>. This communication is purely conceptual and not a legal offering, the information contained herein is only indicative in nature. The areas and dimensions mentioned above are as per the plans approved/to be approved by the concerned authority and the same are subject to construction exigencies and variations. The furniture, fixtures, features, interior design and other arrangements/facilities as depicted above (save and except expressly agreed to be provided) are not part of the standard offering and are purely illustrative. List of standard offerings, amenities, facilities and other details are available for verification at the Project site. Intending purchasers are requested to verify all the details before acting in any manner with respect to project.

1 & 2 JODI - 1495 SQ.FT.*



RERA CARPET AREA	ADDITIONAL AREA	TOTAL AREA
SQ.FT	SQ.FT	SQ.FT
1381	114	1495

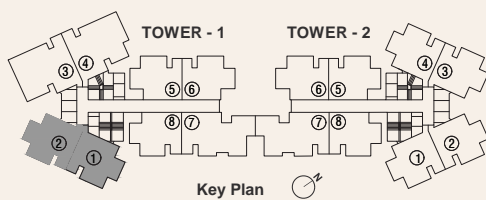
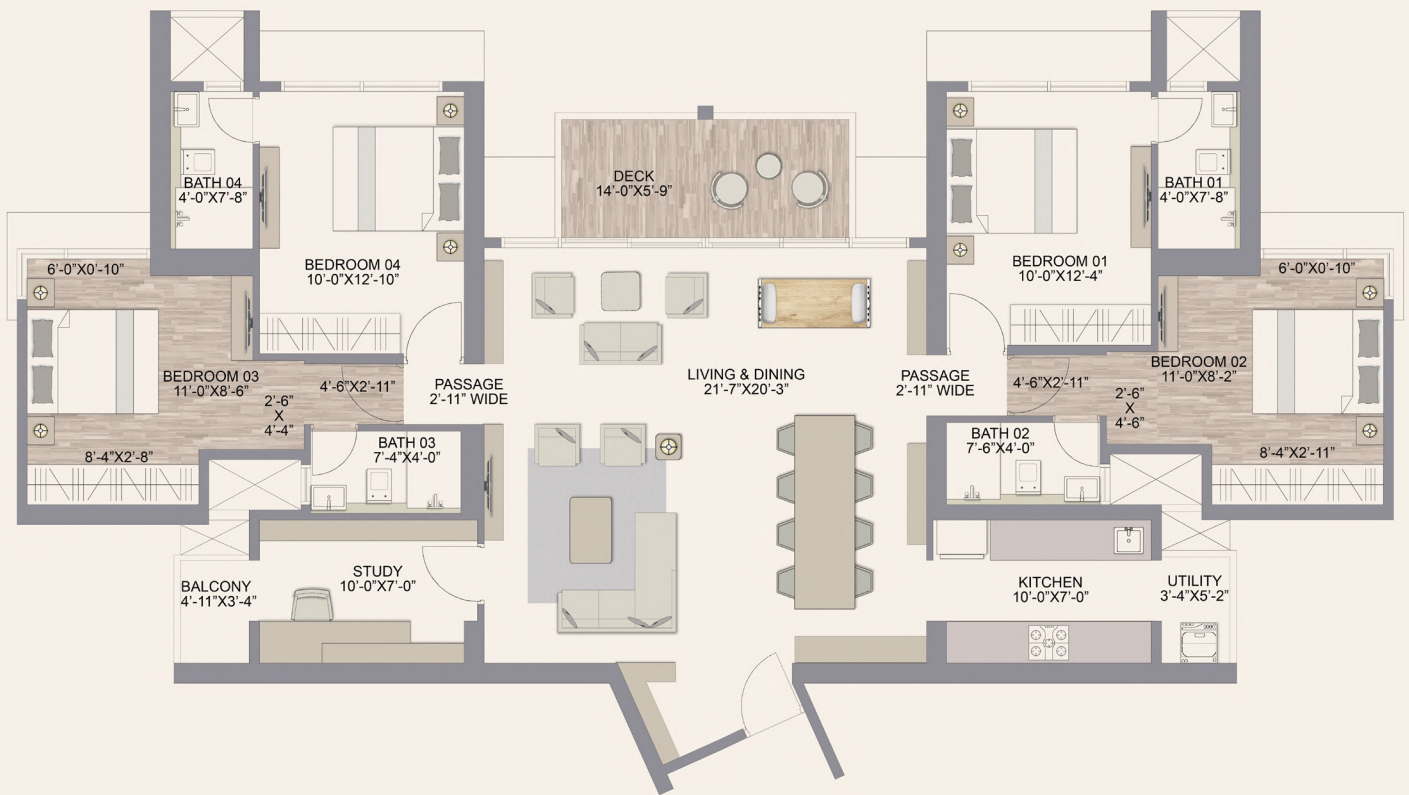


Plan Not To Scale

*T&C Applied

Disclaimer - Project is marketed as Codename Nostalgia and the same is registered as 'Chandak Treasorous' on the MahaRERA bearing MahaRERA Registration No. P51800048658. Available on: <https://maharera.mahaonline.gov.in>. This communication is purely conceptual and not a legal offering, the information contained herein is only indicative in nature. The areas and dimensions mentioned above are as per the plans approved/to be approved by the concerned authority and the same are subject to construction exigencies and variations. The furniture, fixtures, features, interior design and other arrangements/facilities as depicted above (save and except expressly agreed to be provided) are not part of the standard offering and are purely illustrative. List of standard offerings, amenities, facilities and other details are available for verification at the Project site. Intending purchasers are requested to verify all the details before acting in any manner with respect to project.

1 & 2 JODI - 1495 SQ.FT.* WITH SWING



RERA CARPET AREA	ADDITIONAL AREA	TOTAL AREA
SQ.FT	SQ.FT	SQ.FT
1381	114	1495



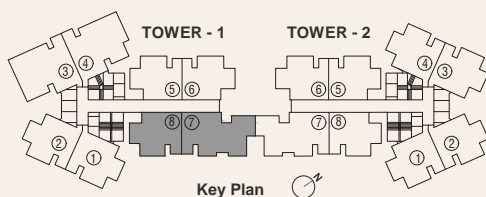
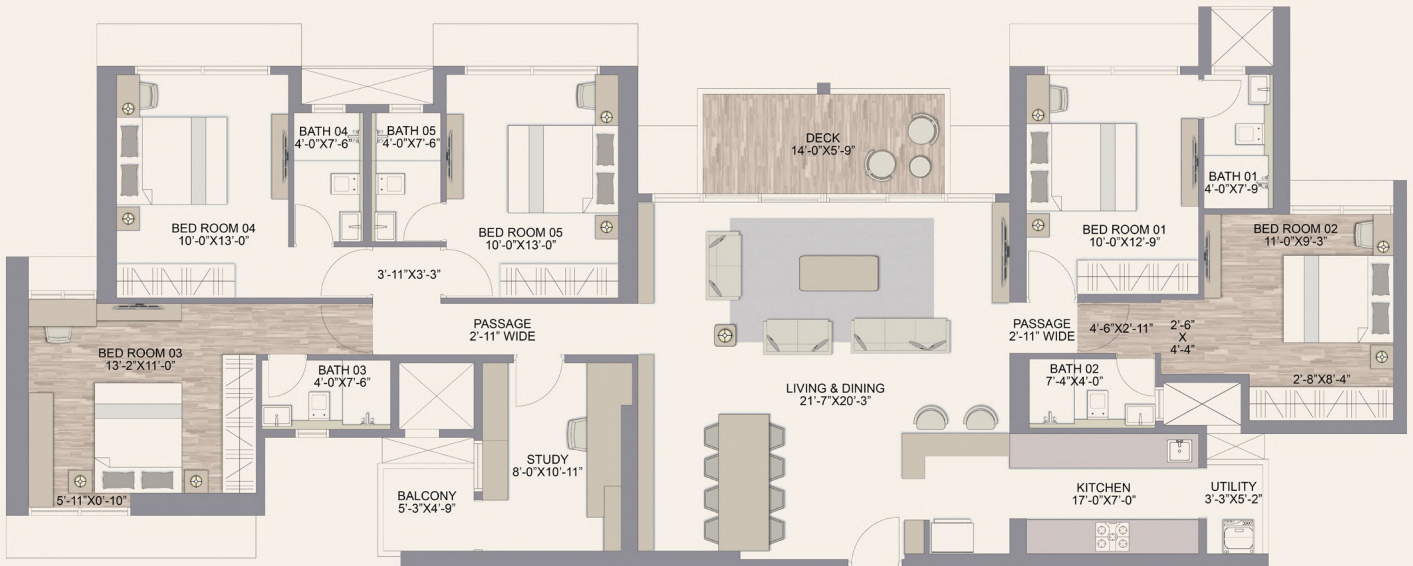
Plan Not To Scale

*T&C Applied

Disclaimer - Project is marketed as Codename Nostalgia and the same is registered as 'Chandak Treesourus' on the MahaRERA bearing MahaRERA Registration No. P51800048658. Available on: <https://maharera.mahaonline.gov.in>. This communication is purely conceptual and not a legal offering, the information contained herein is only indicative in nature. The areas and dimensions mentioned above are as per the plans approved/to be approved by the concerned authority and the same are subject to construction exigencies and variations. The furniture, fixtures, features, interior design and other arrangements/facilities as depicted above (save and except expressly agreed to be provided) are not part of the standard offering and are purely illustrative. List of standard offerings, amenities, facilities and other details are available for verification at the Project site. Intending purchasers are requested to verify all the details before acting in any manner with respect to project.

7 & 8 JODI - 1761 SQ.FT.*

FURNITURE OPTION - 01



RERA CARPET AREA	ADDITIONAL AREA	TOTAL AREA
SQ.FT	SQ.FT	SQ.FT
1639	122	1761

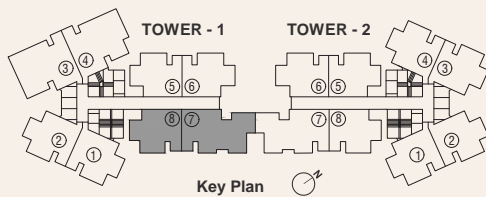
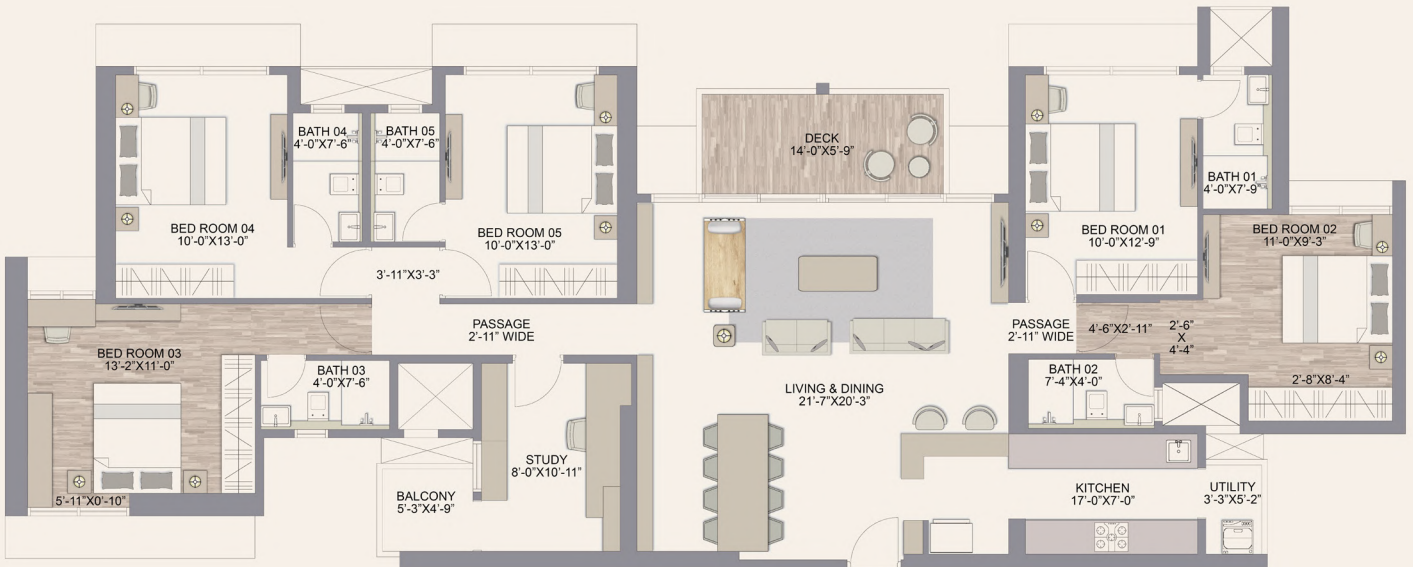


Plan Not To Scale

*T&C Applied

7 & 8 JODI – 1761 SQ.FT.*

FURNITURE OPTION – 01 WITH SWING



RERA CARPET AREA	ADDITIONAL AREA	TOTAL AREA
SQ.FT	SQ.FT	SQ.FT
1639	122	1761

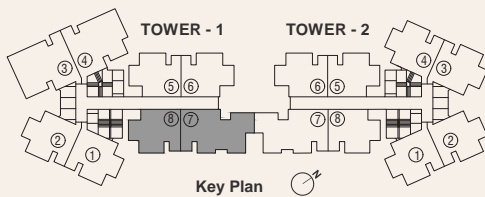
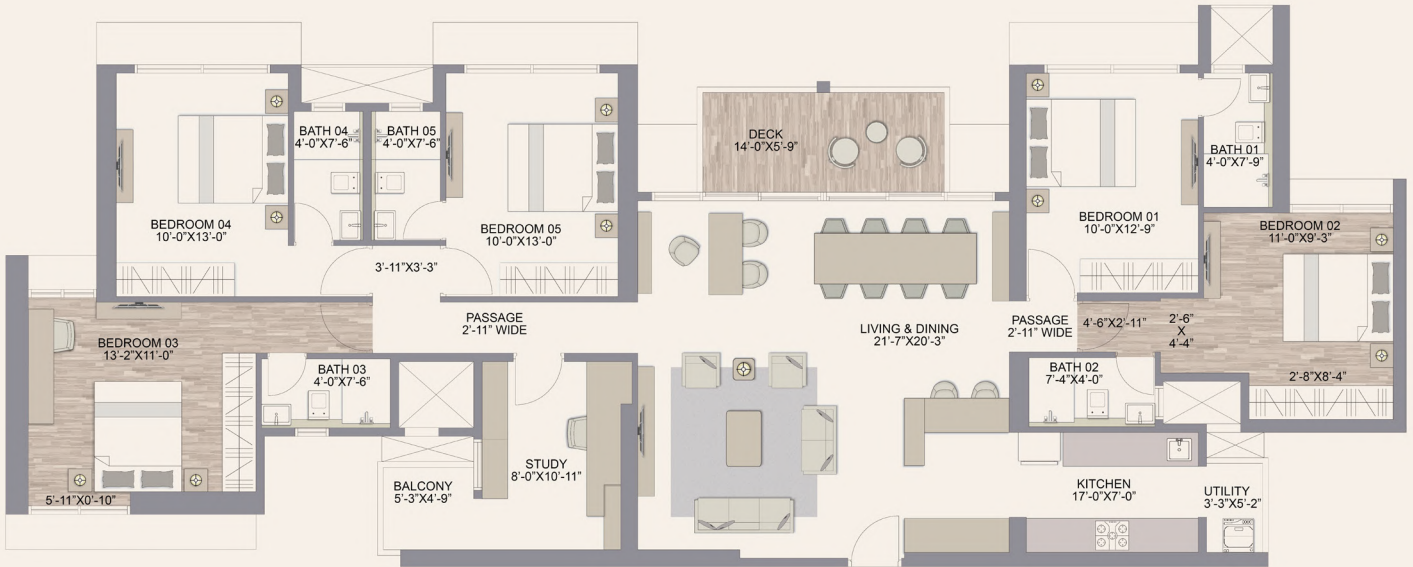


Plan Not To Scale

*T&C Applied

7 & 8 JODI - 1761 SQ.FT.*

FURNITURE OPTION - 02



RERA CARPET AREA	ADDITIONAL AREA	TOTAL AREA
SQ.FT	SQ.FT	SQ.FT
1639	122	1761

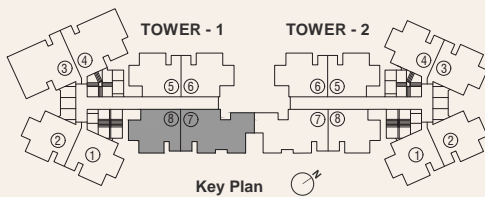
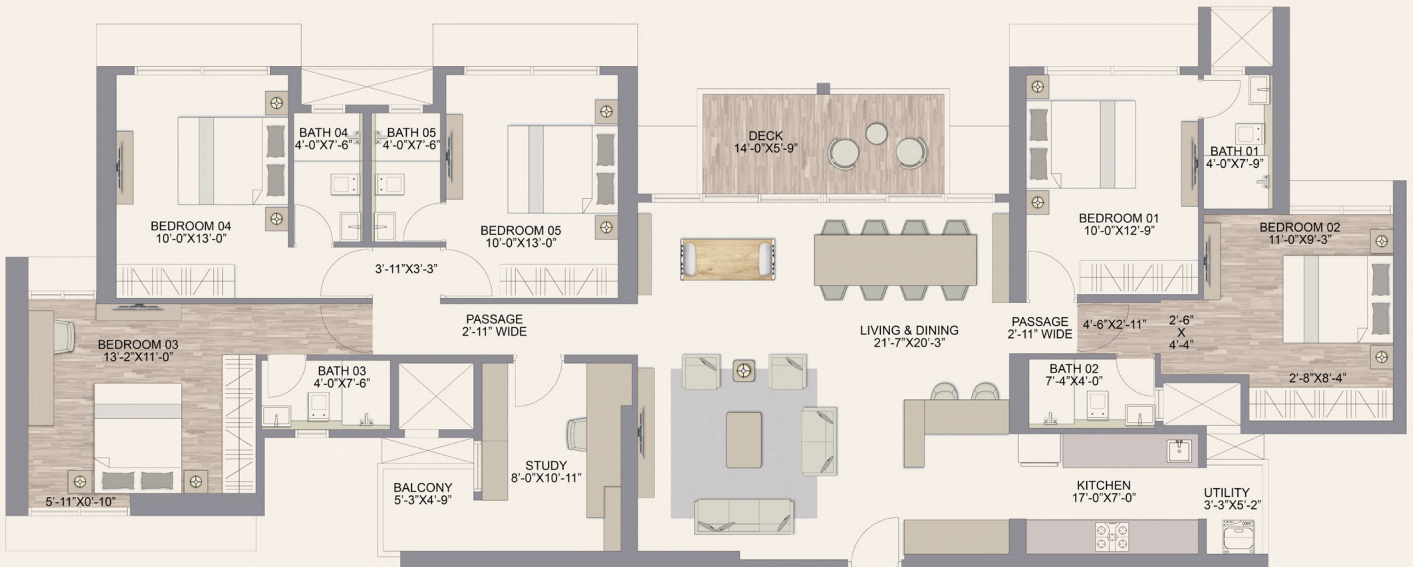


Plan Not To Scale

*T&C Applied

7 & 8 JODI - 1761 SQ.FT.*

FURNITURE OPTION - 02 WITH SWING



RERA CARPET AREA	ADDITIONAL AREA	TOTAL AREA
SQ.FT	SQ.FT	SQ.FT
1639	122	1761

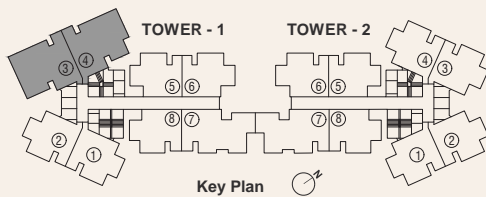
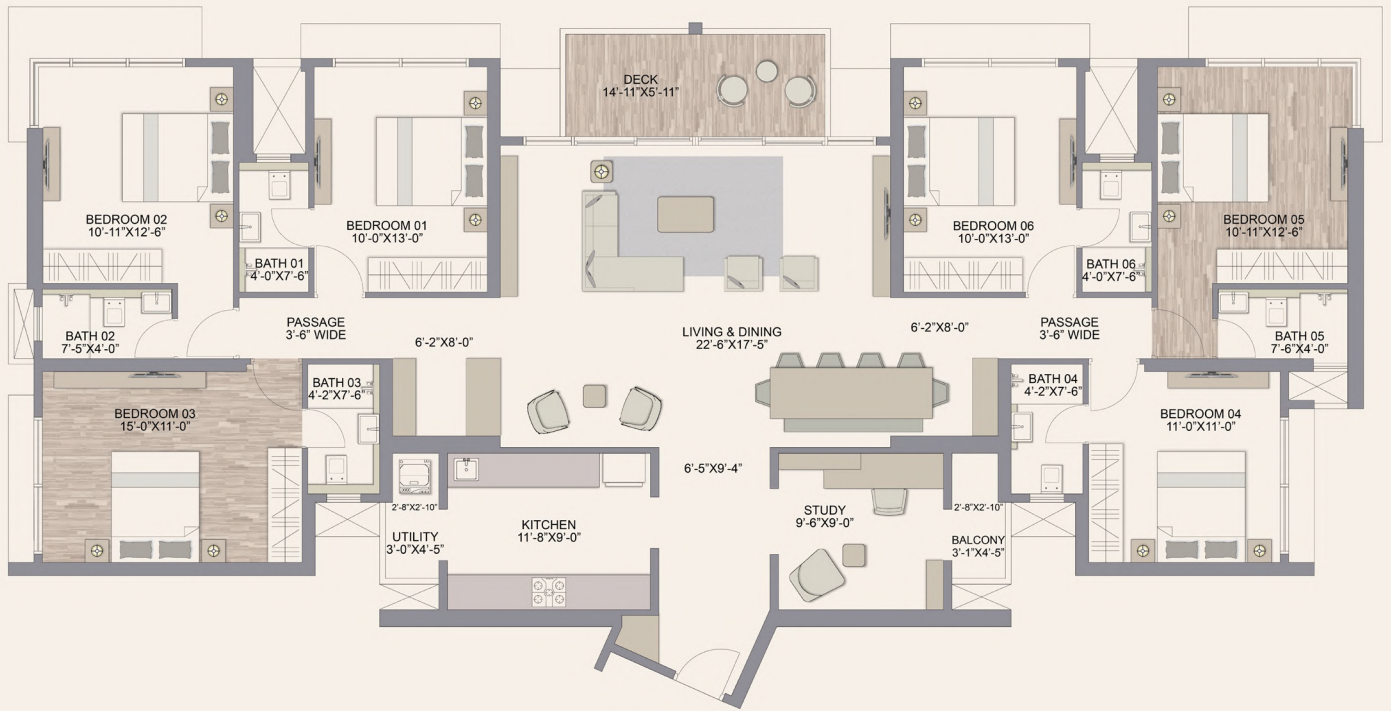


Plan Not To Scale

*T&C Applied

Disclaimer - Project is marketed as Codename Nostalgia and the same is registered as 'Chandak Treesourus' on the MahaRERA bearing MahaRERA Registration No. P51800048658. Available on: <https://maharera.mahaonline.gov.in>. This communication is purely conceptual and not a legal offering, the information contained herein is only indicative in nature. The areas and dimensions mentioned above are as per the plans approved/to be approved by the concerned authority and the same are subject to construction exigencies and variations. The furniture, fixtures, features, interior design and other arrangements/facilities as depicted above (save and except expressly agreed to be provided) are not part of the standard offering and are purely illustrative. List of standard offerings, amenities, facilities and other details are available for verification at the Project site. Intending purchasers are requested to verify all the details before acting in any manner with respect to project.

3 & 4 JODI - 2113 SQ.FT.*



RERA CARPET AREA	ADDITIONAL AREA	TOTAL AREA
SQ.FT	SQ.FT	SQ.FT
1984	129	2113



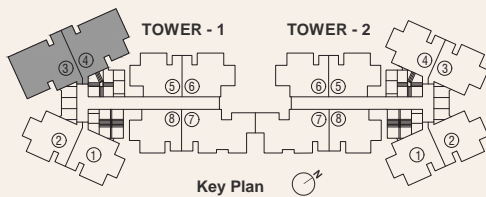
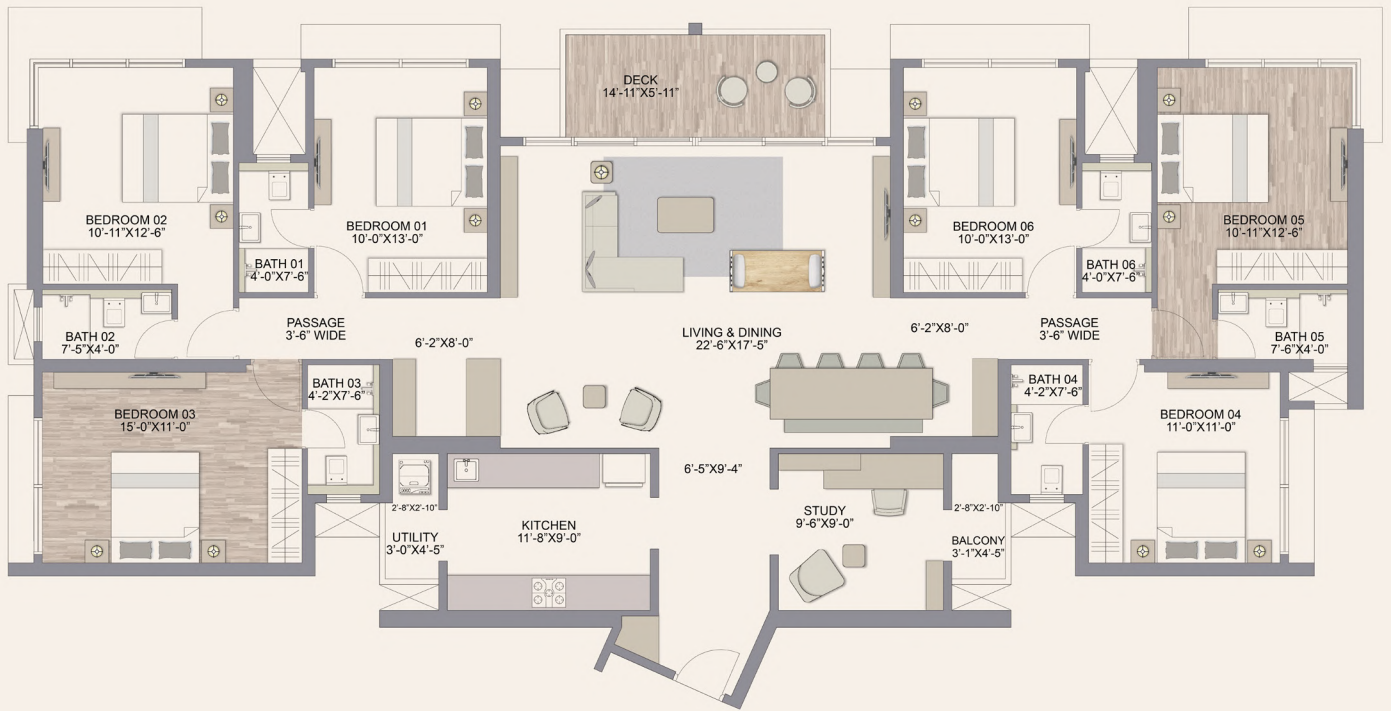
Plan Not To Scale

*T&C Applied

Disclaimer - Project is marketed as Codename Nostalgia and the same is registered as 'Chandak Treesourus' on the MahaRERA bearing MahaRERA Registration No. P51800048658. Available on: <https://maharera.mahaonline.gov.in>. This communication is purely conceptual and not a legal offering, the information contained herein is only indicative in nature. The areas and dimensions mentioned above are as per the plans approved/to be approved by the concerned authority and the same are subject to construction exigencies and variations. The furniture, fixtures, features, interior design and other arrangements/facilities as depicted above (save and except expressly agreed to be provided) are not part of the standard offering and are purely illustrative. List of standard offerings, amenities, facilities and other details are available for verification at the Project site. Intending purchasers are requested to verify all the details before acting in any manner with respect to project.

3 & 4 JODI - 2113 SQ.FT.*

WITH SWING



RERA CARPET AREA	ADDITIONAL AREA	TOTAL AREA
SQ.FT	SQ.FT	SQ.FT
1984	129	2113



Plan Not To Scale

*T&C Applied

Disclaimer - Project is marketed as Codename Nostalgia and the same is registered as 'Chandak Treesourus' on the MahaRERA bearing MahaRERA Registration No. P51800048658.

Available on: <https://maharera.mahaonline.gov.in>. This communication is purely conceptual and not a legal offering, the information contained herein is only indicative in nature. The areas and dimensions mentioned above are as per the plans approved/to be approved by the concerned authority and the same are subject to construction exigencies and variations. The furniture, fixtures, features, interior design and other arrangements/facilities as depicted above (save and except expressly agreed to be provided) are not part of the standard offering and are purely illustrative. List of standard offerings, amenities, facilities and other details are available for verification at the Project site. Intending purchasers are requested to verify all the details before acting in any manner with respect to project.

Currently the project is marketed as Codename Nostalgia. The Project is registered as 'Chandak Treesourus' on the MahaRERA bearing Registration No. P51800048658  Available on: <https://maharera.mahaonline.gov.in>.