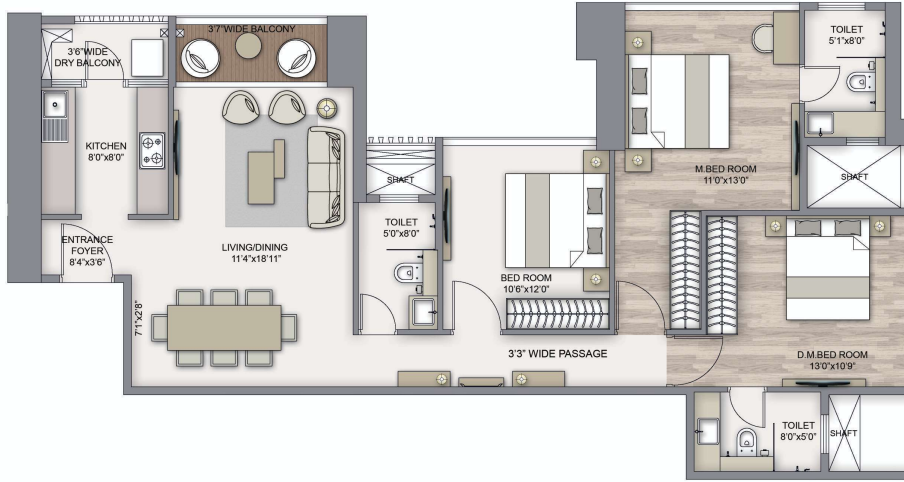


PIRAMAL ARANYA - ARAV

PROPOSED WING B TIER 02 - 3 BEDROOM PLAN

Unit 1 - Levels 12th to 14th, 16th to 21st & 23rd to 28th, 30th, 31st Floor

- ▶ CARPET AREA 1011 Sq.Ft. / 93.91 Sq.Mts.
- ▶ BALCONY 39 Sq.Ft. / 3.59 Sq.Mts.
- ▶ DRY BALCONY 31 Sq.Ft. / 2.86 Sq.Mts.



UNIT LOCATION



TOWER LOCATION



Plan is subject to approval from concerned authorities
 MahaRERA # Piramal Aranya - Wing B : P51900016039
 Website: <https://maharera.mahaonline.gov.in/>
 This project is funded by HDFC Ltd.
 Tel. +91-22-62166216 | www.piramalaranya.com



PIRAMAL ARANYA - ARAV

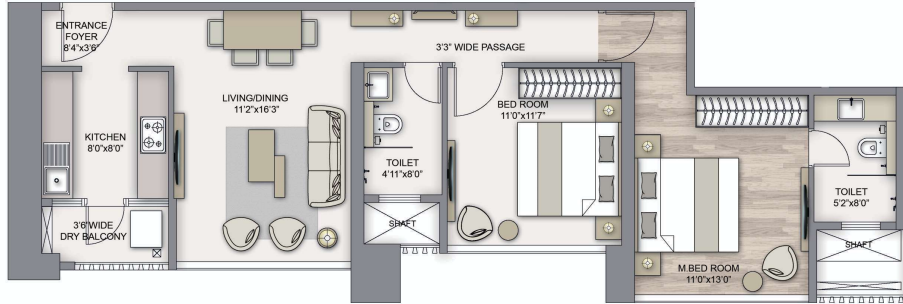
PROPOSED WING B TIER 02 - 2 BEDROOM PLAN

Unit 2 - Levels 12th to 14th, 16th to 21st & 23rd to 28th, 30th, 31st Floor

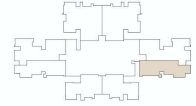
▶ CARPET AREA 739 Sq.Ft. / 68.66 Sq.Mts.

▶ BALCONY -- Sq.Ft. / -- Sq.Mts.

▶ DRY BALCONY 29 Sq.Ft. / 2.71 Sq.Mts.



UNIT LOCATION



TOWER LOCATION



Plan is subject to approval from concerned authorities
MahaRERA # Piramal Aranya - Wing B : P51900016039
Website: <https://maharera.mahaonline.gov.in/>
This project is funded by HDFC Ltd.
Tel. +91-22-62166216 | www.piramalaranya.com



PIRAMAL ARANYA - ARAV

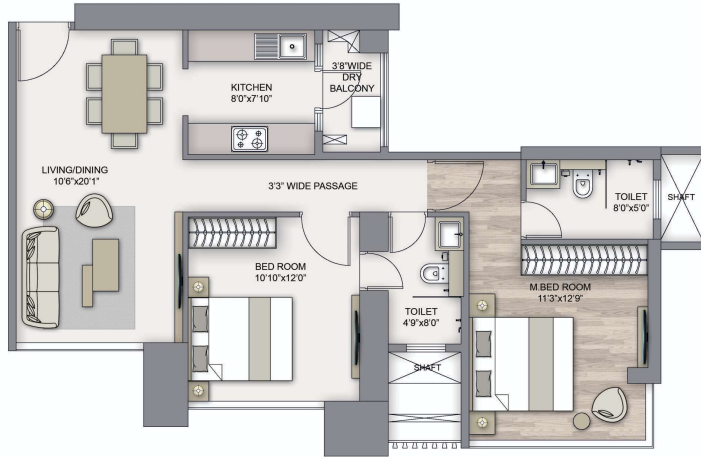
PROPOSED WING B TIER 02 - 2 BEDROOM PLAN

Unit 3 - Levels 12th to 14th, 16th to 21st & 23rd to 28th, 30th, 31st Floor

▶ CARPET AREA 743 Sq.Ft. / 69.04 Sq.Mts.

▶ BALCONY -- Sq.Ft. / -- Sq.Mts.

▶ DRY BALCONY 28 Sq.Ft. / 2.60 Sq.Mts.



UNIT LOCATION



TOWER LOCATION



Plan is subject to approval from concerned authorities
MahaRERA # Piramal Aranya - Wing B : P51900016039
Website: <https://maharera.mahaonline.gov.in/>
This project is funded by HDFC Ltd.
Tel. +91-22-62166216 | www.piramalaranya.com



**Piramal
aranya**
RANI BAUG

PIRAMAL ARANYA - ARAV

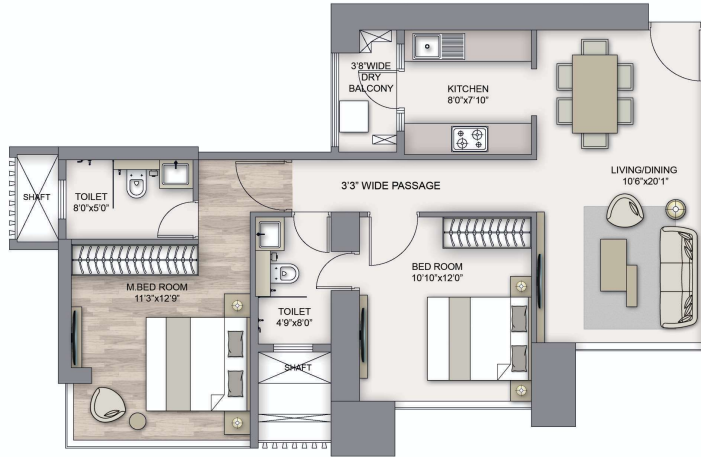
PROPOSED WING B TIER 02 - 2 BEDROOM PLAN

Unit 4 - Levels 12th to 14th, 16th to 21st & 23rd to 28th, 30th, 31st Floor

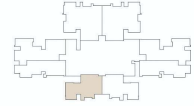
▶ CARPET AREA 743 Sq.Ft. / 69.04 Sq.Mts.

▶ BALCONY -- Sq.Ft. / -- Sq.Mts.

▶ DRY BALCONY 28 Sq.Ft. / 2.60 Sq.Mts.



UNIT LOCATION



TOWER LOCATION



Plan is subject to approval from concerned authorities
MahaRERA # Piramal Aranya - Wing B : P51900016039
Website: <https://maharera.mahaonline.gov.in/>
This project is funded by HDFC Ltd.
Tel. +91-22-62166216 | www.piramalaranya.com

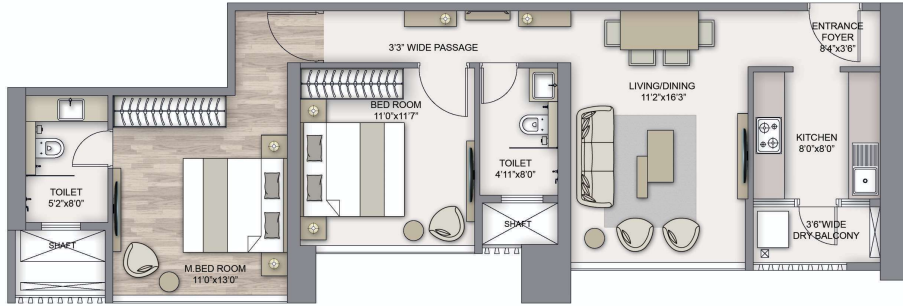


PIRAMAL ARANYA - ARAV

PROPOSED WING B TIER 02 - 2 BEDROOM PLAN

Unit 5 - Levels 12th to 31st Floor

- ▶ CARPET AREA 739 Sq.Ft. / 68.66 Sq.Mts.
- ▶ BALCONY -- Sq.Ft. / -- Sq.Mts.
- ▶ DRY BALCONY 29 Sq.Ft. / 2.71 Sq.Mts.



UNIT LOCATION



TOWER LOCATION



Plan is subject to approval from concerned authorities
 MahaRERA # Piramal Aranya - Wing B : P51900016039
 Website: <https://maharera.mahaonline.gov.in/>
 This project is funded by HDFC Ltd.
 Tel. +91-22-62166216 | www.piramalaranya.com

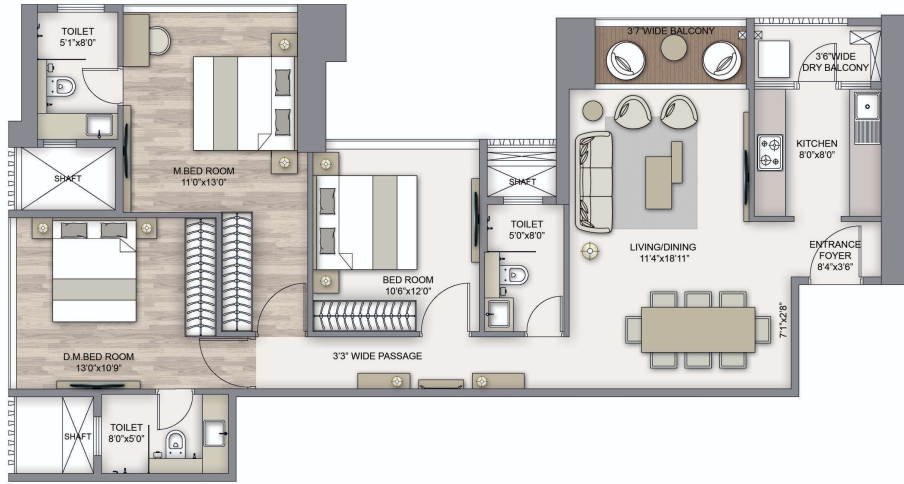


PIRAMAL ARANYA - ARAV

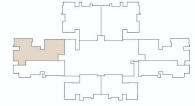
PROPOSED WING B TIER 02 - 3 BEDROOM PLAN

Unit 6 - Levels 12th to 31st Floor

- ▶ CARPET AREA 1011 Sq.Ft. / 93.91 Sq.Mts.
- ▶ BALCONY 39 Sq.Ft. / 3.59 Sq.Mts.
- ▶ DRY BALCONY 31 Sq.Ft. / 2.86 Sq.Mts.



UNIT LOCATION



TOWER LOCATION



Plan is subject to approval from concerned authorities
 MahaRERA # Piramal Aranya - Wing B : P51900016039
 Website: <https://maharera.mahaonline.gov.in/>
 This project is funded by HDFC Ltd.
 Tel. +91-22-62166216 | www.piramalaranya.com



PIRAMAL ARANYA - ARAV

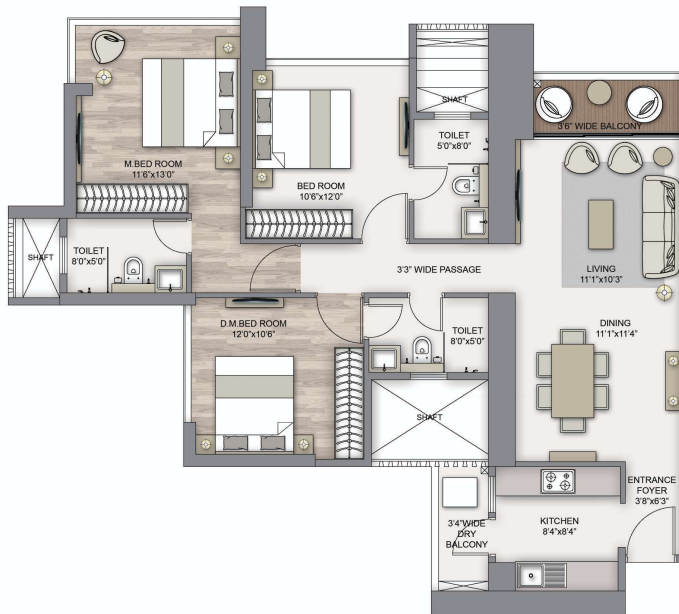
PROPOSED WING B TIER 02 - 3 BEDROOM PLAN

Unit 7 - Levels 12th to 31st Floor

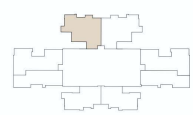
▶ CARPET AREA 996 Sq.Ft. / 92.52 Sq.Mts.

▶ BALCONY 39 Sq.Ft. / 3.60 Sq.Mts.

▶ DRY BALCONY 28 Sq.Ft. / 2.58 Sq.Mts.



UNIT LOCATION



TOWER LOCATION



Plan is subject to approval from concerned authorities
MahaRERA # Piramal Aranya - Wing B : P51900016039
Website: <https://maharera.mahaonline.gov.in/>
This project is funded by HDFC Ltd.
Tel. +91-22-62166216 | www.piramalaranya.com



**Piramal
aranya**
RANI BAUG

PIRAMAL ARANYA - ARAV

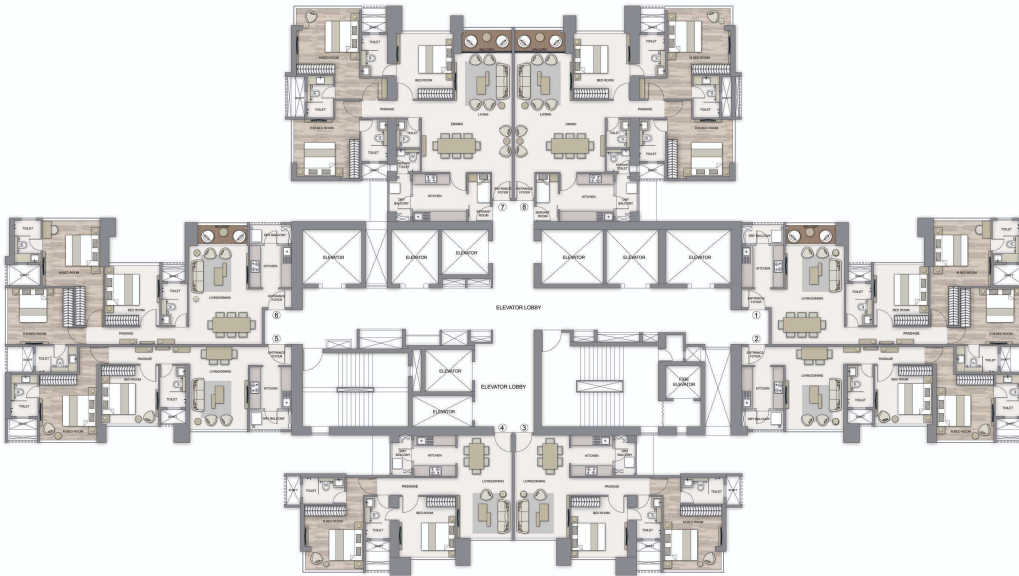
PROPOSED WING B TIER O2

Levels 12th to 14th, 16th to 21st, 23rd to 28th, 30th, 31st Floor

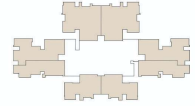
Unit 1 - Carpet Area : 1011 Sq.Ft. (93.91 Sq.Mts)
 Unit 2 - Carpet Area : 739 Sq.Ft. (68.66 Sq.Mts)
 Unit 3 - Carpet Area : 743 Sq.Ft. (69.04 Sq.Mts)
 Unit 4 - Carpet Area : 743 Sq.Ft. (69.04 Sq.Mts)
 Unit 5 - Carpet Area : 739 Sq.Ft. (68.66 Sq.Mts)
 Unit 6 - Carpet Area : 1011 Sq.Ft. (93.91 Sq.Mts)
 Unit 7 - Carpet Area : 1291 Sq.Ft. (119.85 Sq.Mts)
 Unit 8 - Carpet Area : 1291 Sq.Ft. (119.85 Sq.Mts)

Balcony : 39 Sq.Ft. (3.59 Sq.Mts)
 Balcony : -- Sq.Ft. (-- Sq.Mts)
 Balcony : -- Sq.Ft. (-- Sq.Mts)
 Balcony : -- Sq.Ft. (-- Sq.Mts)
 Balcony : -- Sq.Ft. (-- Sq.Mts)
 Balcony : -- Sq.Ft. (-- Sq.Mts)
 Balcony : 43 Sq.Ft. (4.02 Sq.Mts)
 Balcony : 43 Sq.Ft. (4.02 Sq.Mts)

Dry Balcony : 31 Sq.Ft. (2.86 Sq.Mts)
 Dry Balcony : 29 Sq.Ft. (2.71 Sq.Mts)
 Dry Balcony : 28 Sq.Ft. (2.60 Sq.Mts)
 Dry Balcony : 28 Sq.Ft. (2.60 Sq.Mts)
 Dry Balcony : 29 Sq.Ft. (2.71 Sq.Mts)
 Dry Balcony : 31 Sq.Ft. (2.86 Sq.Mts)
 Dry Balcony : 36 Sq.Ft. (3.36 Sq.Mts)
 Dry Balcony : 36 Sq.Ft. (3.36 Sq.Mts)



UNIT LOCATION



TOWER LOCATION



Plan is subject to approval from concerned authorities
 MahaRERA # Piramal Aranya - Wing B : P51900016039
 Website: <https://maharera.mahaonline.gov.in/>
 This project is funded by HDFC Ltd.
 Tel. +91-22-62166216 | www.piramalaranya.com



PIRAMAL ARANYA - ARAV

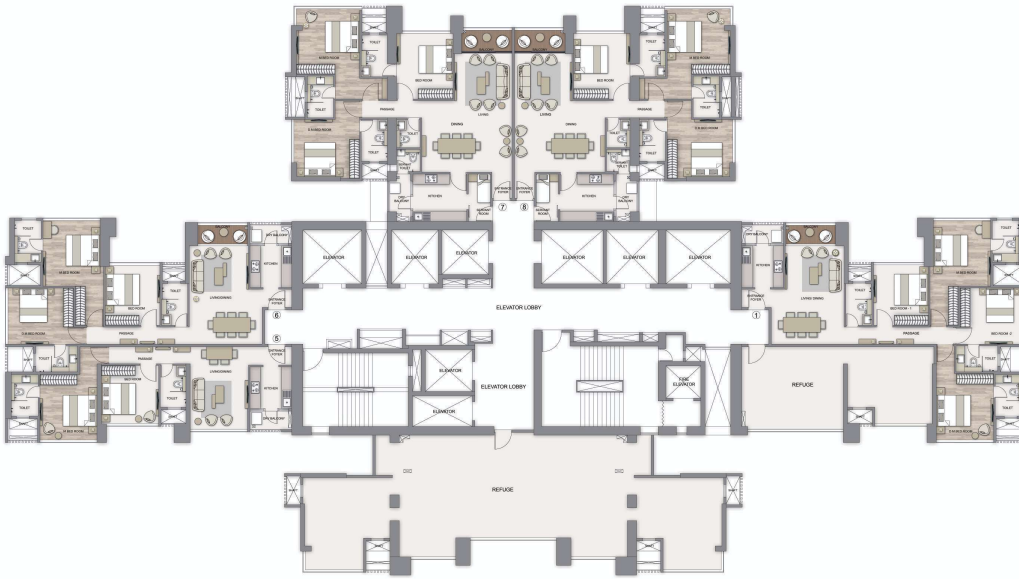
PROPOSED WING B TIER 02

Levels 15th, 22nd & 29th Refuge Floor

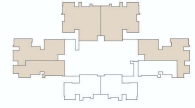
Unit 1 - Carpet Area : 1223 Sq.Ft. (113.62 Sq.Mts)
 Unit 5 - Carpet Area : 739 Sq.Ft. (68.66 Sq.Mts)
 Unit 6 - Carpet Area : 1011 Sq.Ft. (93.91 Sq.Mts)
 Unit 7 - Carpet Area : 1291 Sq.Ft. (119.95 Sq.Mts)
 Unit 8 - Carpet Area : 1291 Sq.Ft. (119.95 Sq.Mts)

Balcony : 39 Sq.Ft. (3.59 Sq.Mts)
 Balcony : — Sq.Ft. (— Sq.Mts)
 Balcony : 39 Sq.Ft. (3.59 Sq.Mts)
 Balcony : 43 Sq.Ft. (4.02 Sq.Mts)
 Balcony : 43 Sq.Ft. (4.02 Sq.Mts)

Dry Balcony : 31 Sq.Ft. (2.86 Sq.Mts)
 Dry Balcony : 29 Sq.Ft. (2.71 Sq.Mts)
 Dry Balcony : 31 Sq.Ft. (2.86 Sq.Mts)
 Dry Balcony : 36 Sq.Ft. (3.36 Sq.Mts)
 Dry Balcony : 36 Sq.Ft. (3.36 Sq.Mts)



UNIT LOCATION



TOWER LOCATION



Plan is subject to approval from concerned authorities
 MahaRERA # Piramal Aranya - Wing B : P51900018039
 Website: <https://maharera.mahaonline.gov.in/>
 This project is funded by HDFC Ltd.
 Tel. +91-22-62166216 | www.piramalaranya.com



**Piramal
aranya**
RANI BAUG