

PASSCODE

BIG SHOW

FOR BIGGER LIFE

STAR LIFESTYLE BLOCKBUSTER PROJECT

PREMIER CONNECTIVITY & COMFORT



PREMIER CONNECTIVITY & COMFORT

BLOCKBUSTER LIFE WITH EPIC VIEW

KANDIVALI - WEST



BE THE PART OF BLOCKBUSTER PROJECT

Majestic 2 BHK homes facing mesmerizing panoramic view with exceptional lifestyle.

With the grand success of Project Veena Smart Homes, the city's most prestigious address is now home to a selected few. The smart home layouts and its finest amenities were loved and well-appreciated by customers.

Back on popular demand, we are coming with a new tower "Passcode Big Show" with Exclusive 2 BHK Apartments with a lifetime mesmerizing panoramic view to give a luxurious touch to your daily life at Kandivali-West.

Passcode Big Show has a rich array of amenities that will provide residents an unparalleled lifestyle experience with exclusive rooftop amenities and elite sky lobbies especially designed to cater to residents and their guests for memorable gatherings and events.

Ground+ 40 storey tower with modern amenities and a picture-perfect view that becomes more beautiful as the level increases.

WAKE UP IN THE LAP OF NATURE
FROM THE COMFORT OF YOUR ROOM AND
SOAK IN THE FINEST PANORAMIC VIEW



Actual View from Site



Scan for 360° view



BE THE HERO OF
THE BIG SHOW
OF YOUR LIFE



Living Room

Reference Image



Bedroom

Reference Image



Kitchen

Reference Image



Bathroom

Reference Image

Apartment Features & Amenities

If the architectural grandeur and well-connected location has impressed you so far, the elegance of your living space has much more to offer. With its thoughtful space designing and handpicked internal amenities, your home at Passcode Big Show is no lesser than a private world of privileges crafted specially for the royals like you.

Let the Big Show begin!

HOME AUTOMATION

- HOME AUTOMATION CONTROLLED WITH ALEXA

TOWER FEATURES

- DESIGNER ENTRANCE LOBBY
- 4 LIFTS OF REPUTED MAKE
- WELL-DESIGNED LIFT LOBBIES ON EACH FLOOR
- SERVANT WASHROOM ON EACH FLOOR
- SEPARATE CAR PARKING TOWER
- FIRE FIGHTING SYSTEM FOR COMMON AREA AS PER NORMS

SECURITY FEATURES

- VIDEO DOOR PHONE /INTERCOM FOR EACH FLAT
- CCTV CAMERA IN COMMON AREA

FLOORING

- VITRIFIED FLOORING IN LIVING, BEDROOM & KITCHEN

KITCHEN

- MODULAR KITCHEN
- GRANITE PLATFORM WITH STAINLESS STEEL SINK

ELECTRICAL FITTINGS

- A/C, TV AND TELEPHONE POINTS
- SUFFICIENT ELECTRIC POINTS WITH BRANDED MODULAR SWITCHES

TOILETS

- GRANITE COUNTER BASIN
- BRANDED SANITARY WARE & CP FITTINGS
- HOT & COLD WATER DIVERTOR WITH SHOWER IN COMMON & MASTER TOILET

WALLS & CEILING

- INTERNAL WALLS WITH GYPSUM FINISH & PLASTIC EMULSION PAINT
- CEILING WITH PLASTIC PAINT
- EXTERNAL WALLS SAND-FACED PLASTER WITH TEXTURE FINISH / ACRYLIC PAINT / EMULSION PAINT

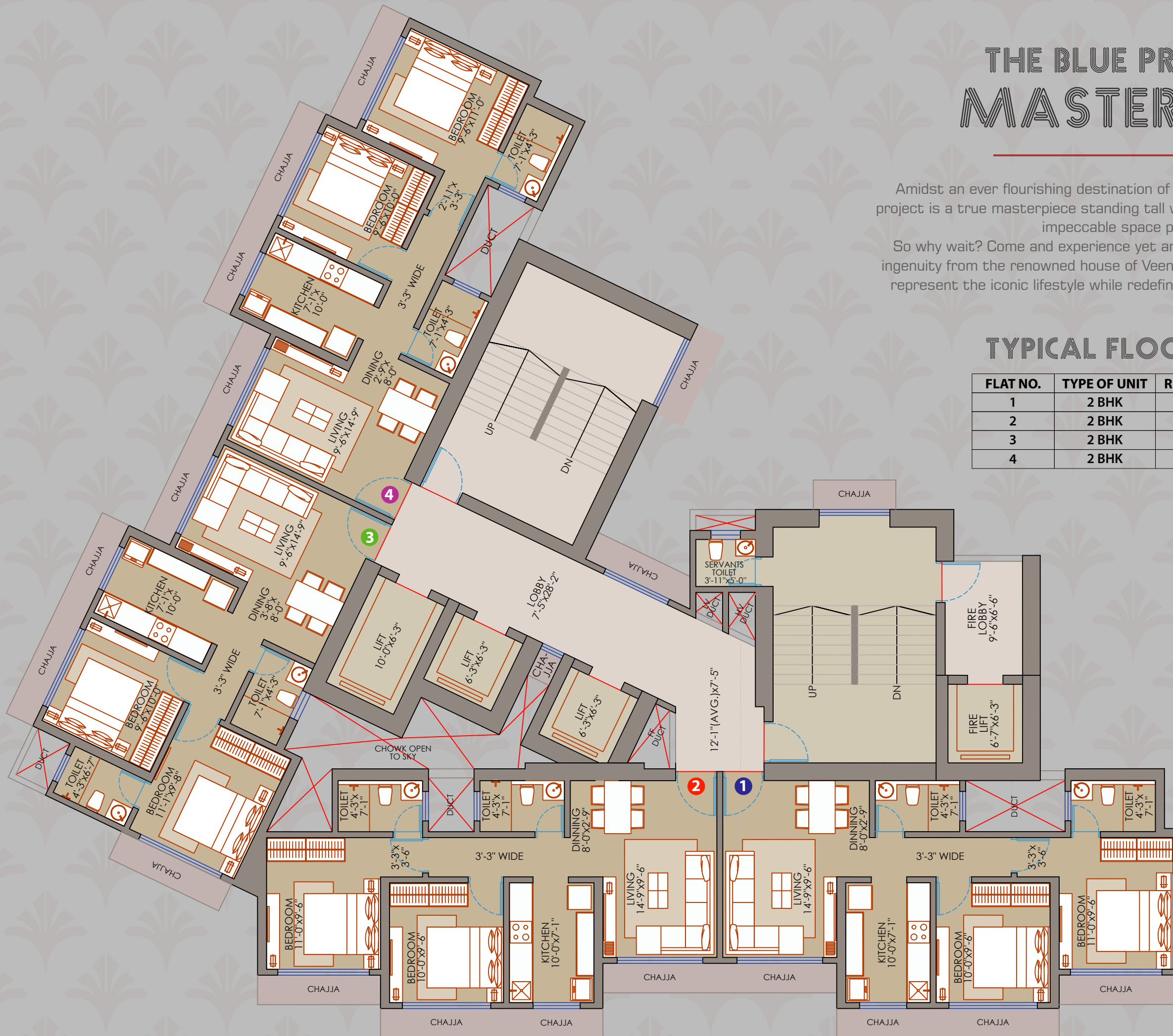
THE BLUE PRINT OF MASTERPIECE

Amidst an ever flourishing destination of numerous developments, the project is a true masterpiece standing tall with its well thought design and impeccable space planning.

So why wait? Come and experience yet another marvel of architectural ingenuity from the renowned house of Veena Developers which is all set to represent the iconic lifestyle while redefining the heights of modernism.

TYPICAL FLOOR PLAN

FLAT NO.	TYPE OF UNIT	RERA CARPET AREA
1	2 BHK	588 SQ.FT
2	2 BHK	590 SQ.FT
3	2 BHK	571 SQ.FT
4	2 BHK	586 SQ.FT





GIVE STAR LIFESTYLE TO YOUR FAMILY

Your home speaks a lot about you, It represents your choices and preferences. It reflects your character and personality. It is a symbol of your status.

It's a place where moments become memories.

Here is a home, no lesser than an empire of your own. No lesser than your Big Dream you always wanted to realise.

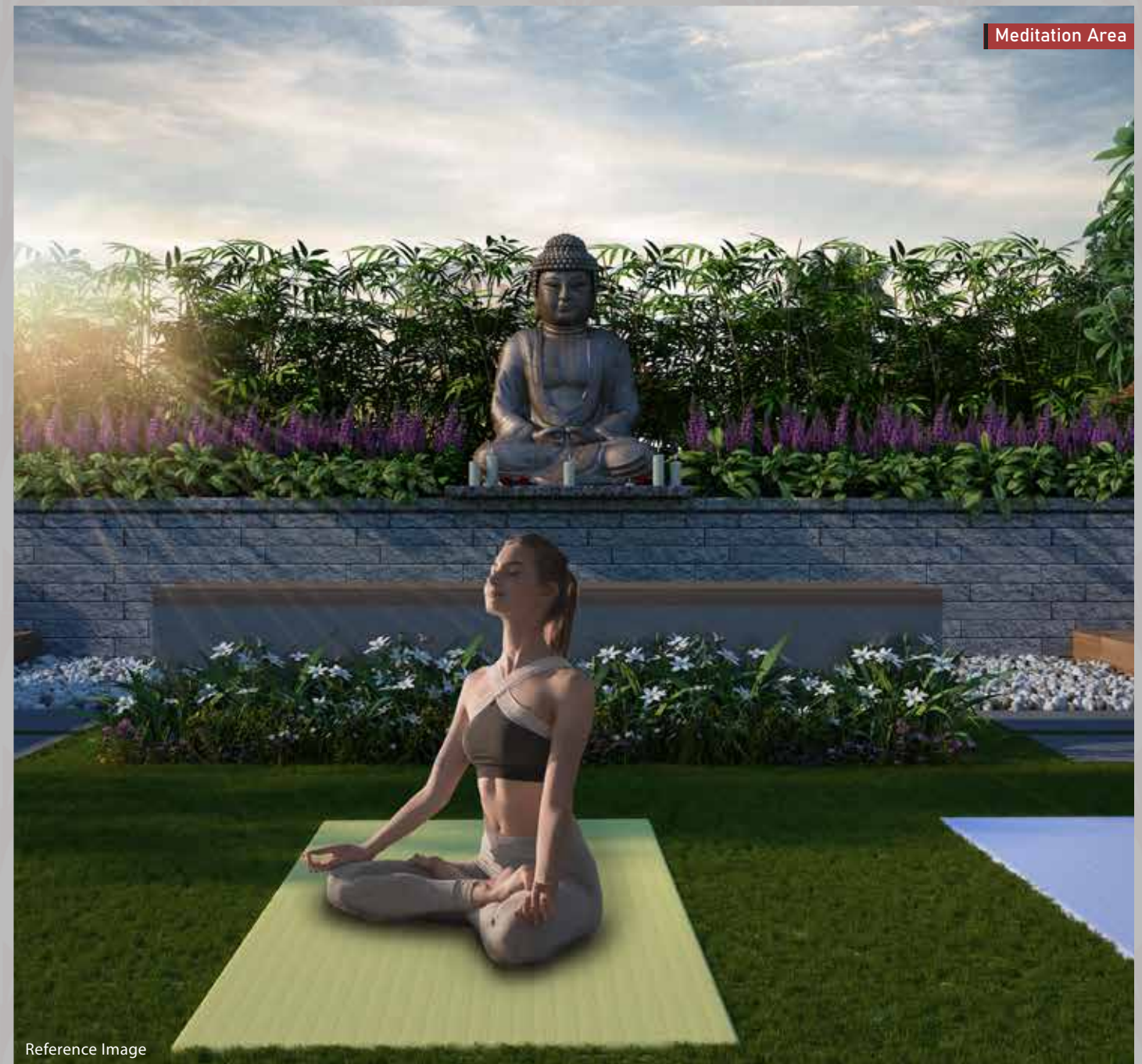


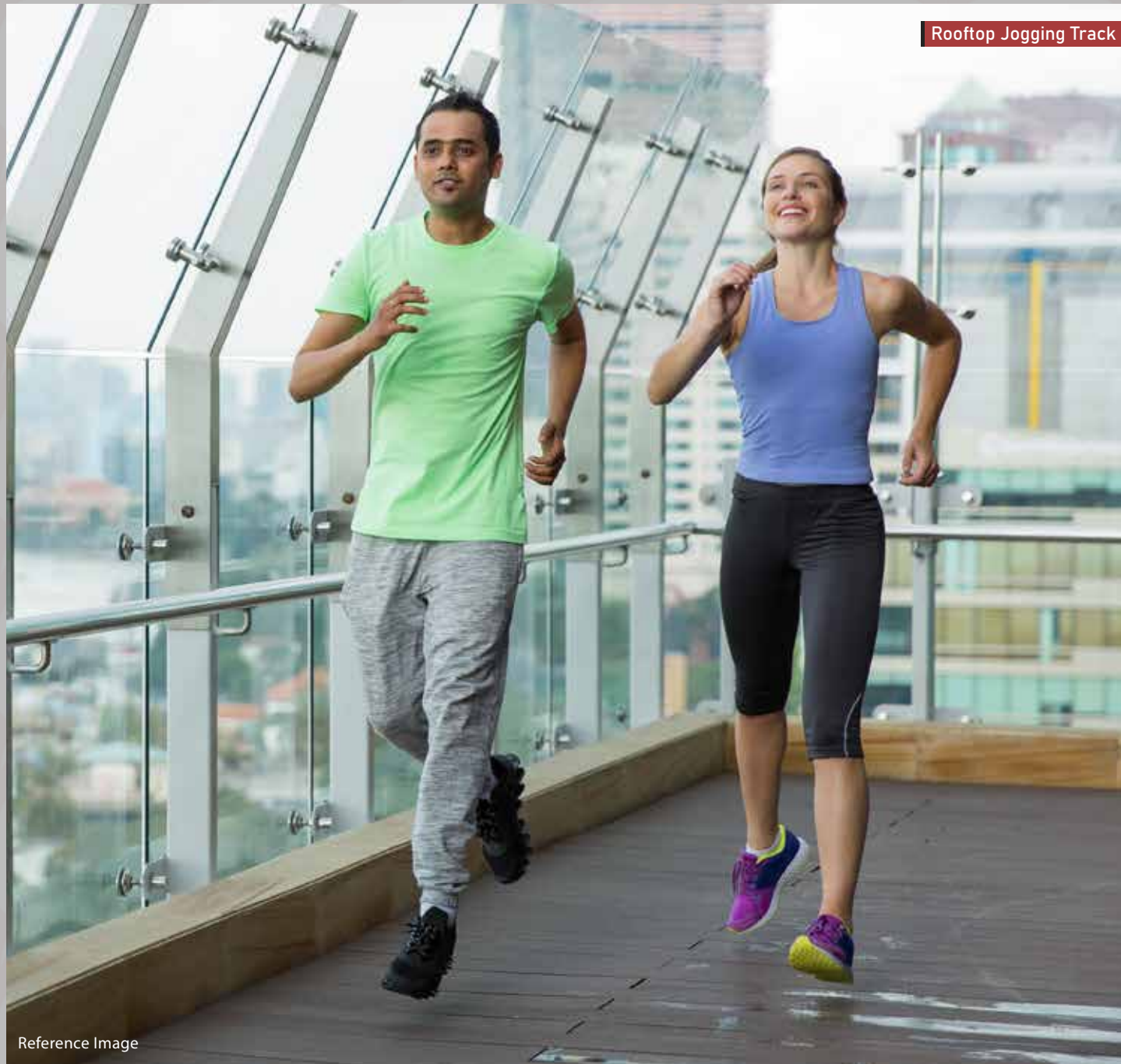
IN THE MIDST OF A METROPOLIS, FIND A NEW BALANCE

20+ Recreation & Lifestyle Amenities

Every corner of Passcode Big Show has got something to amaze. From revitalising of health to high class security, from elegant entrance lobby to modern lifestyle provisions, every amenity is thoughtfully designed and set to make your moments of life healthier, safe & happier.

Come here to experience your cherishing time turning into great memories.





Rooftop Jogging Track

Reference Image



Co-Working Area

Reference Image



Multipurpose Activity Area

Reference Image



Rooftop Zen Garden

Reference Image



Banquet Area

Reference Image



PREMIER CONNECTIVITY & COMFORT AT YOUR DOOR STEP

At Passcode Big Show you are conveniently placed with all your social, religious, educational, entertainment, and daily needs being around the corner. You are just a walk away from schools, colleges, markets, theatres, temples, etc.

Living this up close to convenience makes your life smoother and better.



Metro Station

Reference Image



Link Road

Reference Image



Railway Station

Reference Image



BLOCKBUSTER LOCATION WITH PREMIER CONNECTIVITY

The numerous options of this location offers to the residents, increase it's importance. Passcode Big Show provides an abundance options of connectivity & everything in admirable accessibility.



RAIL / METRO

- Dahanukarwadi : 05 mins Metro Station
- Kandivali Station : 10 mins
- Borivali Station : 20 mins



ROAD

- New Link Road : 06 mins
- SV Road : 10 mins
- W. E. Highway : 20 mins
- JVLR : 25 mins



AIRPORT

- T-2 Terminal : 35 mins
- Domestic Airport : 30 mins

*Approx Timings

FUTURE DEVELOPMENT



Proposed Metro Line Between Charkop-Mankhurd



Proposed Coastal Road from Kandivali to Nariman Point



Widening of road from W.E. Highway to Kandivali Station



A Project by:



VEENA DEVELOPERS

Your Dreams... Are Our Homes...

Since 1990

30+
Projects
Delivered

5300+
Happy
Customers

4.75+
Million sq.ft
Delivered

06
Projects Under
Construction

3700+
To Be
Happy Customers

2.6+
Million sq.ft
Under Construction

ABOUT VEENA DEVELOPERS

Founded in the year 1990, Veena Developers has become a name synonymous with honesty, integrity, transparency, and trust. With more than 31 years of glorious legacy, Veena Developers has come a long way in delivering projects spread across approximately 47,50,000 lakhs sq.ft into residential, commercial and industrial developments. 5300+ happy customers and 30+ completed projects are a part of our success. Some of the notable projects that we have delivered in the past are based in Mumbai's prime locations.

Sales & Site Address : Veena Smart Homes, Off M.G. Road, Near IPCA Laboratories, Charkop Village, Kandivali (W), Mumbai, Maharashtra 400067.
Call: 89 7043 7043 • Email: sales@veenadevelopers.com • www.passcodebigshow.com

Head Office Address : A-901, 9th Floor, Kaledonia, Sahar Road, Opp. Sambhaji Nagar, Near Railway Station, Andheri (E), Mumbai - 400 069.

MahaRERA No: P51800029400 | P51800032966 | P51800031045 | Also available on the website <https://maharera.mahaonline.gov.in>

Disclaimer: Passcode Big Show is the marketing campaign name for Veena Smart Homes and has been registered under Maha RERA as P51800029400 | P51800032966 | P51800031045 and also available at website <https://maharera.mahaonline.gov.in>. This printed material does not constitute an offer or contract of any nature whatsoever between the Promoter/Developer and the recipient. All rendered visuals, images and maps are artist's conception and for illustration purpose only unless otherwise mentioned. Developer does not warrant or assume any legal liability for the accuracy, completeness or usefulness of any information disclosed. All colors, furniture, fixtures shown are for aesthetic representation purpose only and not part of the flat offered for sale.